

Annual Traffic Safety Update

Tuesday, March 19, 2024

Prepared By: South Pasadena Public Works Department

Overview

- Overview
 - 2023-24 Annual Work Plan
 - Fatal Injuries and Severe Injuries Citywide (Trends, Summary, Map, Profiles)
- Fatal & Severe Injuries Chart--San Gabriel Valley & Adjacent Cities
- Fatal & Severe Injuries Map 2013-2023
- Severe Injuries Summary 2013-2023
- Fatal vs Severe Injuries Graph 2013-2023
- Collision Fatalities Location Map 2013-2023
- Three (3) Fatality TIMS Injury Profiles
- Next Steps (Current Projects, Engineering Survey, SS4A,)

Fatal and Severe Injuries Table 2013-2022

Fatal and Serious Injury Crashes 2013-2022													
City	County	2013	2014	2015	2016	2017	2018	2019	2020	2021	2022	Average per YR	Rank # in County
LOS ANGELES	LOS ANGELES	1,287	1,331	1,346	1,693	1,748	1,824	1,819	1,693	2,059	2,012	1681	1
PASADENA	LOS ANGELES	38	32	41	37	44	48	37	41	42	52	41	7
ALHAMBRA	LOS ANGELES	15	12	13	13	15	25	23	18	16	20	17	30
SAN GABRIEL	LOS ANGELES	11	8	11	10	11	10	12	6	6	3	9	51
LA PUENTE	LOS ANGELES	9	4	3	8	5	10	9	12	13	13	9	53
SOUTH EL MONTE	LOS ANGELES	3	2	5	5	8	9	14	13	13	10	8	55
TEMPLE CITY	LOS ANGELES	1	8	2	3	3	9	6	8	6	7	5	64
SOUTH PASADENA	LOS ANGELES	1	6	3	4	3	3	3	5	2	7	4	72
SAN MARINO	LOS ANGELES	4	1	6	4	3	3	1	0	1	0	2	77
SIERRA MADRE	LOS ANGELES	3	0	0	1	1	2	0	0	0	1	1	82
BRADBURY	LOS ANGELES	0	0	0	0	0	0	0	0	0	0	0	87

Note: These are Fatal and Serious Injury Crashes for smaller cities in San Gabriel Valley and sister cities.

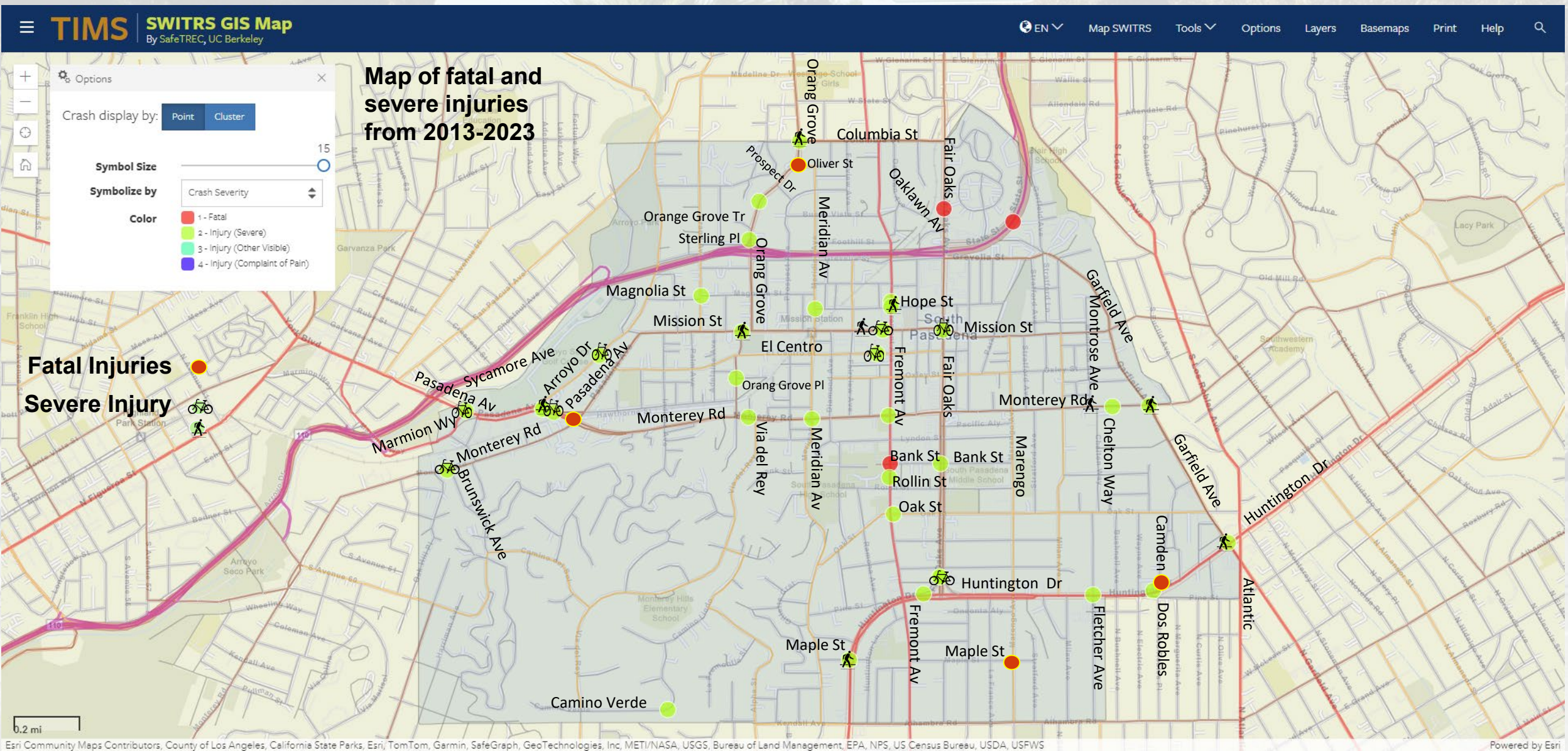
Note 2: All collision data may not be reflected on the chart since is not automated process yet.

Note 3: Data shown on this table is from UC Berkeley's Transportation Injury Mapping System and SMTRS Summary available online.

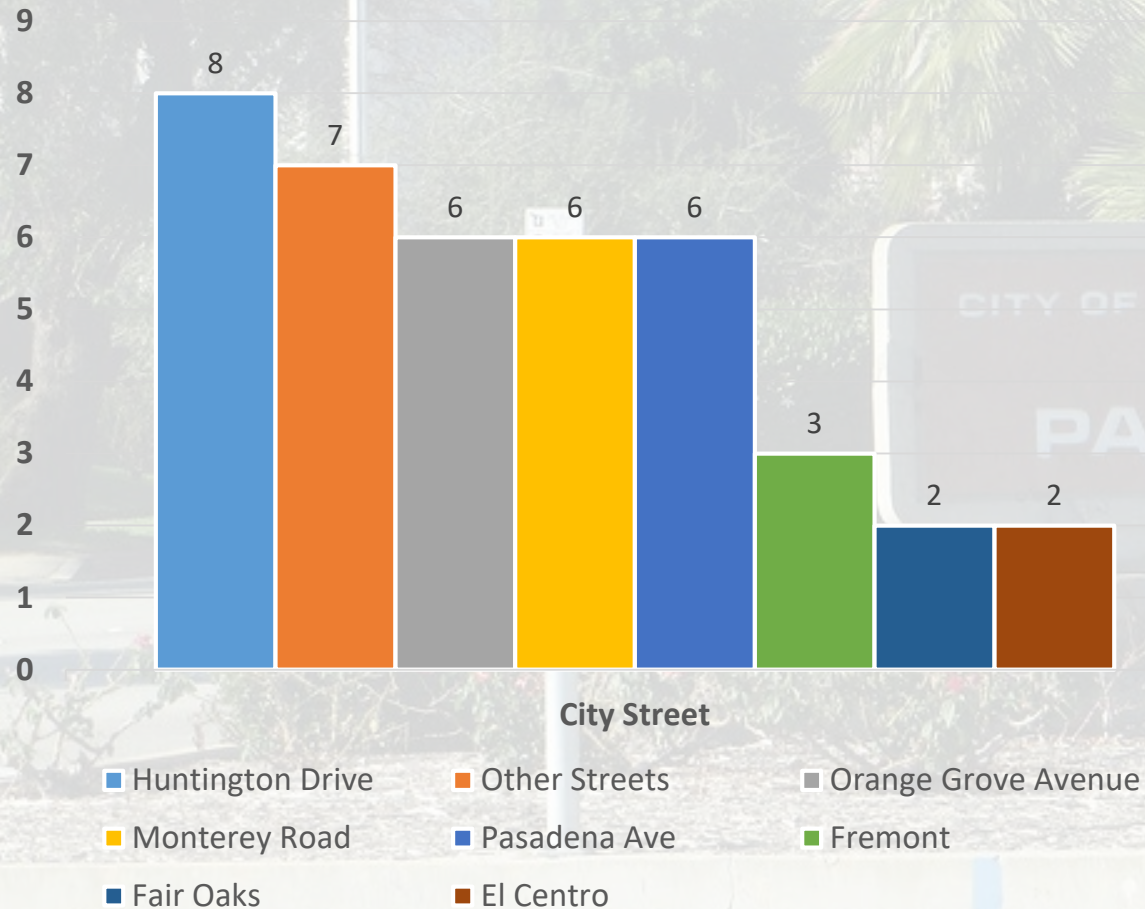
Note 4: Data may or may not align with SMTRS data due to reporting delays.

- Comparison of fatal & serious collisions between sister cities and San Gabriel Cities over a nine (9) year period.

Fatal and Severe Injuries 2013-2023




Severe Injuries Summary




➤ *Other: Mission, Columbia, Garfield, Meridian, Grand, Oak, Arroyo, and Camino Verde- Each of these streets had one severe injury in the last 10 years*


➤ From 2013 to 2023- The city had approximately 41 collisions that resulted in severe injuries

➤ 8 out of 41 involved cyclists 

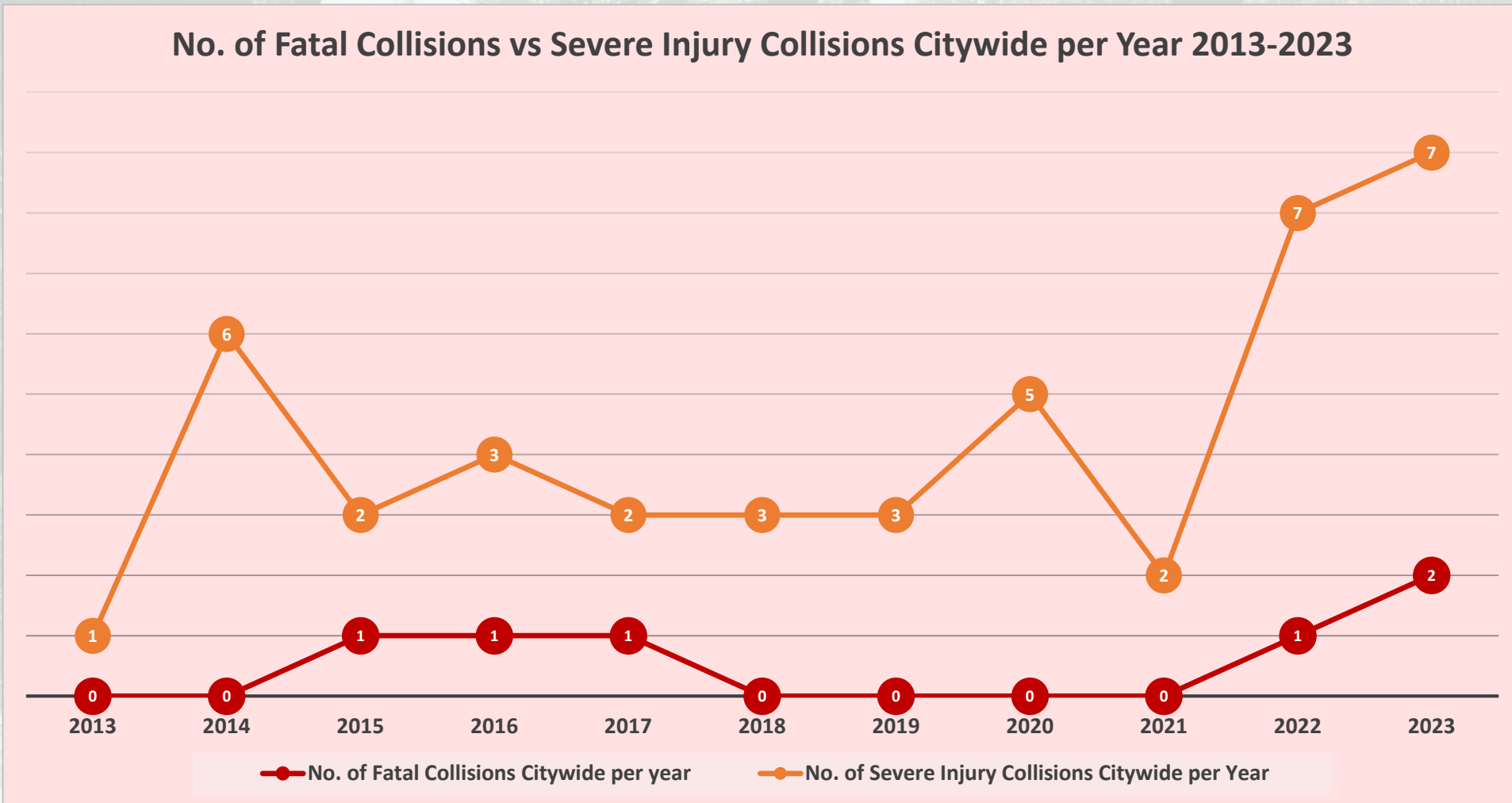
- 6 out 8 occurred away from the intersection
- 1 out of 8 occurred Dusk-Dawn
- 1 out of 8 occurred after midnight
- 5 out of 8 occurred on a Saturday
- 2 broadside, 2 rear end, 1 sideswipe, 3 other

➤ 9 out of 41 involved pedestrians 

- 6 out of 9 occurred at a crosswalk
- 7 out of 9 occurred during daylight
- 5 out of 9 occurred on a Monday
- 5 out of 9 involved Pedestrian ROW as the violation
- 1 of 9 involved unsafe speed

➤ 29 out of 41 involved parked car, another car, or fixed object 

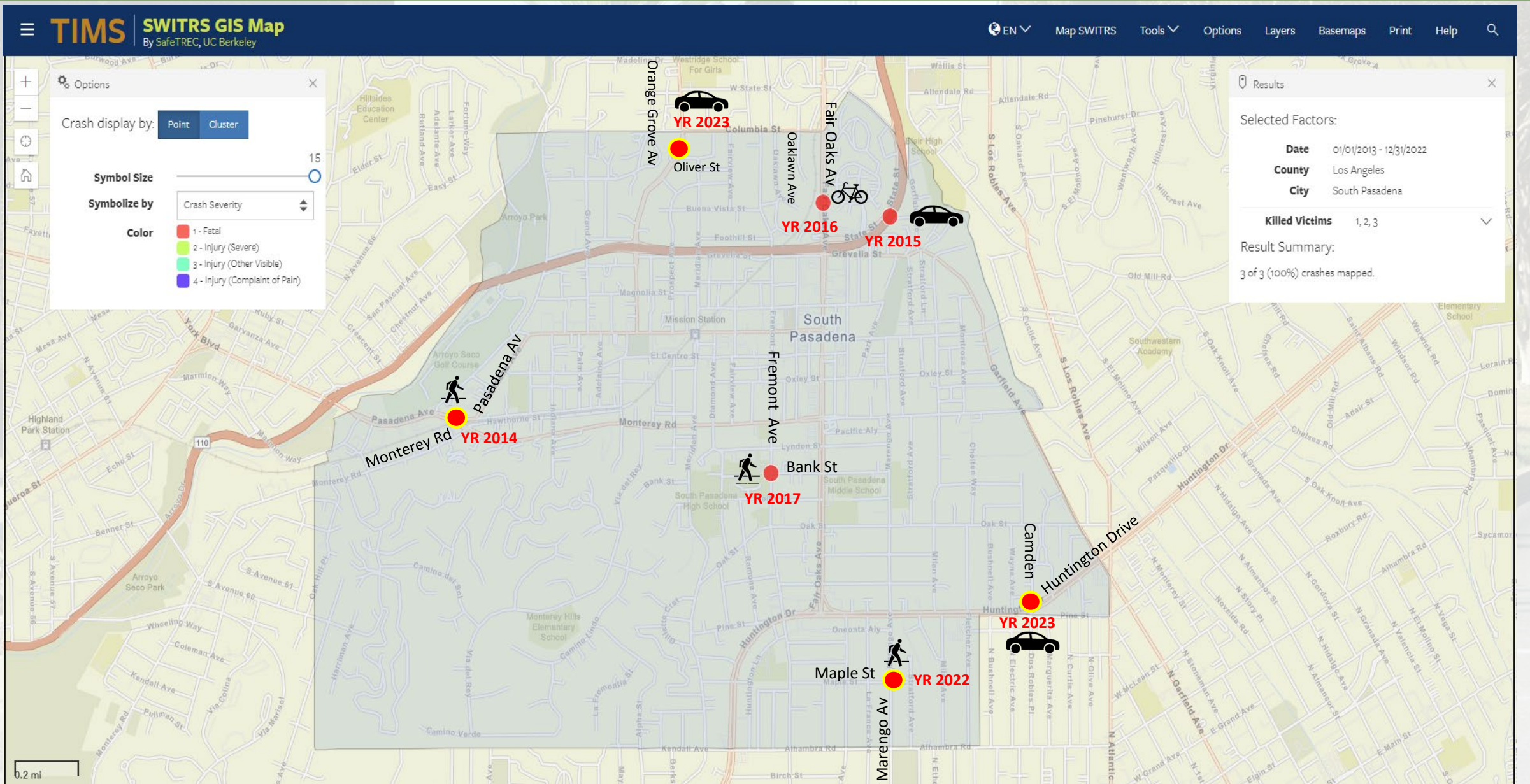
Fatalities vs Severe Injuries 2013-2023



Note: Includes other known fatalities that are not listed in SWITRS

➤ Comparison of fatal & serious collisions in the last decade.

Collision Fatalities 2013-2023



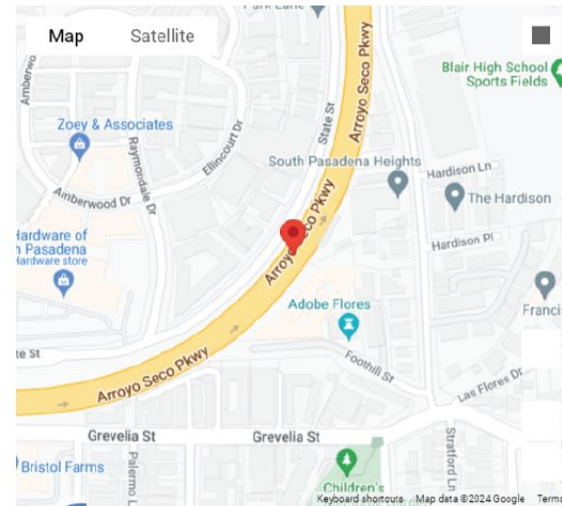
Fatal Injury Profile-SR-110 & Fair Oaks

Crash Details for: Case ID 6292777

Crash Information

County	Los Angeles		
City	South Pasadena		
Date & Time (M/D/Y)	06/27/2015 13:41		
Location (Intersection)	Rt 110 & Fair Oaks Av		
Dist. & Dir. from Intersection	1375.00 ft North		
State Highway Info	Route Number 110 Side of Hwy N Postmile 31.430 Location Type H - Highway		
Geocoded Location	34.1205149, -118.1466632		
Type of Crash	E - Hit Object		
Motor Vehicle Involved With	I - Fixed Object		
Crash Severity	1 - Fatal		
PCF Violation Category	08 - Improper Turning		
Weather	A - Clear		
Alcohol Involved	No		
Pedestrian Crash	No	Bicycle Crash	No
Motorcycle Crash	No	Truck Crash	No

Map View



Street View



Parties: 1

Party Number	Party Type	Statewide Vehicle Type	At Fault	Party Direction	Movement Preceding Collision
1	1 - Driver (including Hit and Run)	A - Passenger Car/Station Wagon	Yes	North	R - Other

Victims: 1

Party Number	Victim Role	Victim Gender	Victim Age	Victim Degree of Injury
1	1 - Driver	F - Female	25	1 - Killed

Fatal Injury Profile-Fair Oaks/Mound

Crash Details for: Case ID 8166696

Crash Information

County	Los Angeles
City	South Pasadena
Date & Time (M/D/Y)	08/26/2016 05:44
Location (Intersection)	Fair Oaks Av & Mound Av
Dist. & Dir. from Intersection	343.00 ft North
State Highway	No
Geocoded Location	34.1210605, -118.1503015

Type of Crash	C - Rear End
Motor Vehicle Involved With	E - Parked Motor Vehicle
Crash Severity	1 - Fatal
PCF Violation Category	00 - Unknown
Weather	A - Clear
Alcohol Involved	No

Pedestrian Crash	No	Bicycle Crash	Yes
Motorcycle Crash	No	Truck Crash	Yes

Map View



Street View



Parties: 2

Party Number	Party Type	Statewide Vehicle Type	At Fault	Party Direction	Movement Preceding Collision
1	4 - Bicyclist	L - Bicycle	No	North	B - Proceeding Straight
2	3 - Parked Vehicle	F - Truck or Truck Tractor	No	North	O - Parked

Victims: 1

Party Number	Victim Role	Victim Gender	Victim Age	Victim Degree of Injury
1	4 - Bicyclist	M - Male	73	1 - Killed

Fatal Injury Profile- Fremont/Bank

Crash Details for: Case ID 8465432

Crash Information

County	Los Angeles
City	South Pasadena
Date & Time (M/D/Y)	04/10/2017 23:49
Location (Intersection)	Fremont Av & Bank St
Dist. & Dir. from Intersection	At Intersection
State Highway	No
Geocoded Location	34.1099501, -118.15317

Type of Crash	G - Vehicle/Pedestrian
Motor Vehicle Involved With	B - Pedestrian
Crash Severity	1 - Fatal
PCF Violation Category	00 - Unknown
Weather	A - Clear
Alcohol Involved	Yes

Pedestrian Crash	No	Bicycle Crash	No
Motorcycle Crash	No	Truck Crash	No

Map View



Street View



Parties: 1

Party Number	Party Type	Statewide Vehicle Type	At Fault	Party Direction	Movement Preceding Collision
1	5 - Other	A - Passenger Car/Station Wagon	No	West	O - Parked

Victims: 1

Party Number	Victim Role	Victim Gender	Victim Age	Victim Degree of Injury
1	5 - Other	M - Male	33	1 - Killed

Next Steps

- *Fremont and Huntington Active Transportation Project-Design Charette*
- *Orange Grove Task Order and Marengo Traffic Safety Assessment*
- *Mission Street Slow Streets*
- *Fair Oaks Design Charette and Fair Oaks ITS Project*
- *Staff is looking at the SS4A for future grant funding*