

Slow Street Program

South Pasadena – December 13, 2021

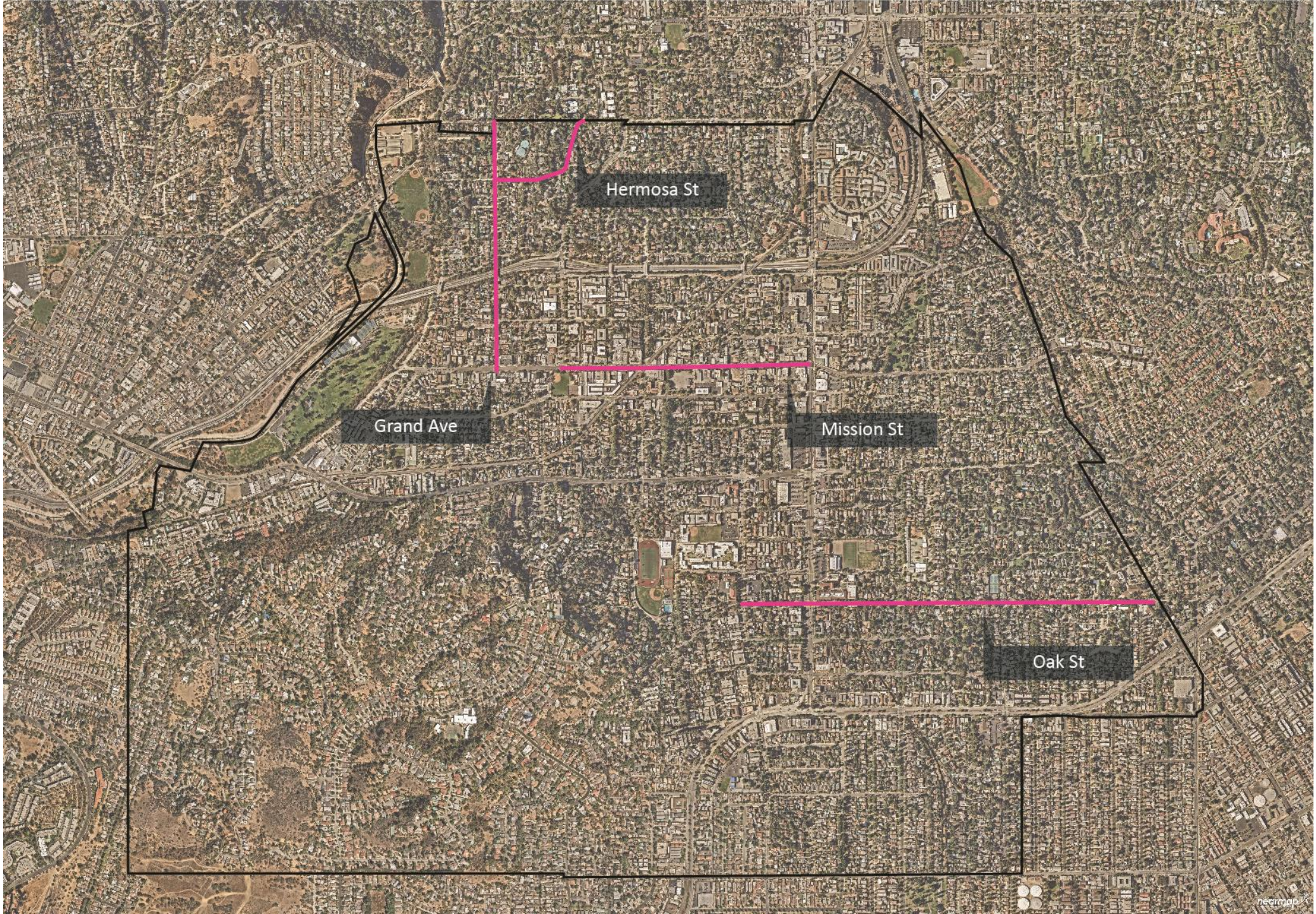
Mobility and Transportation Commission



alta

What is the Slow Streets Program?





Hermosa St

Grand Ave

Mission St

Oak St



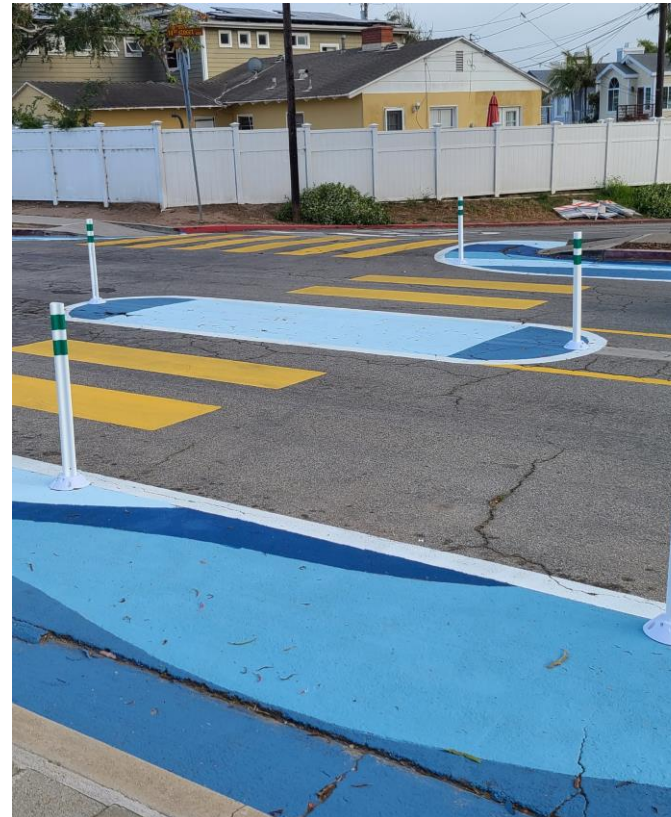
Mission Street

- **Economic Recovery**
 - Improved Mission Street Experience
 - Placemaking



Residential Streets

- Hermosa Street
- Grand Avenue
- Oak Street
 - Slow down streets
 - Active Transportation Space



What did we hear?



Community Design Process - Residential Streets

Door to door canvassing: 4
corridors (Oak, Grand,
Hermosa, Ramona)

Resident survey: 81% of
respondents stated they would
like their street to be
designated a 'Slow Street'

SOUTH PASADENA

SLOW STREETS



Program Survey

Since you were not home when we stopped by, we would love your feedback. Please take a moment to complete the survey online at: _____, or by scanning the QR code at the bottom of this page. You may also complete this print copy of the survey and mail it to: ActiveSGV, 10900 Mulhall St., El Monte 91731.

1. **What street do you live on?** _____
2. **Zip Code** _____
3. **Your street has been nominated to participate in the program. Would you like your street to be designated a 'South Pasadena Slow Street'?**
 - o Yes
 - o No
4. **If Yes, what temporary elements would you like to be considered for your street (in addition to signage)?** Please select all that apply.
 - o High visibility crosswalks
 - o Curb extensions
 - o Edge line striping
 - o Temporary bike lane
 - o Other traffic calming measures, please specify:

Community Design Process - Mission Street

- **One-on-one meetings**
(Mission St stakeholders)
- **Focus group** (Chamber of
Commerce Economic
Development Committee)
- **Community tour of Glendora
Village**

Key Themes / Requests

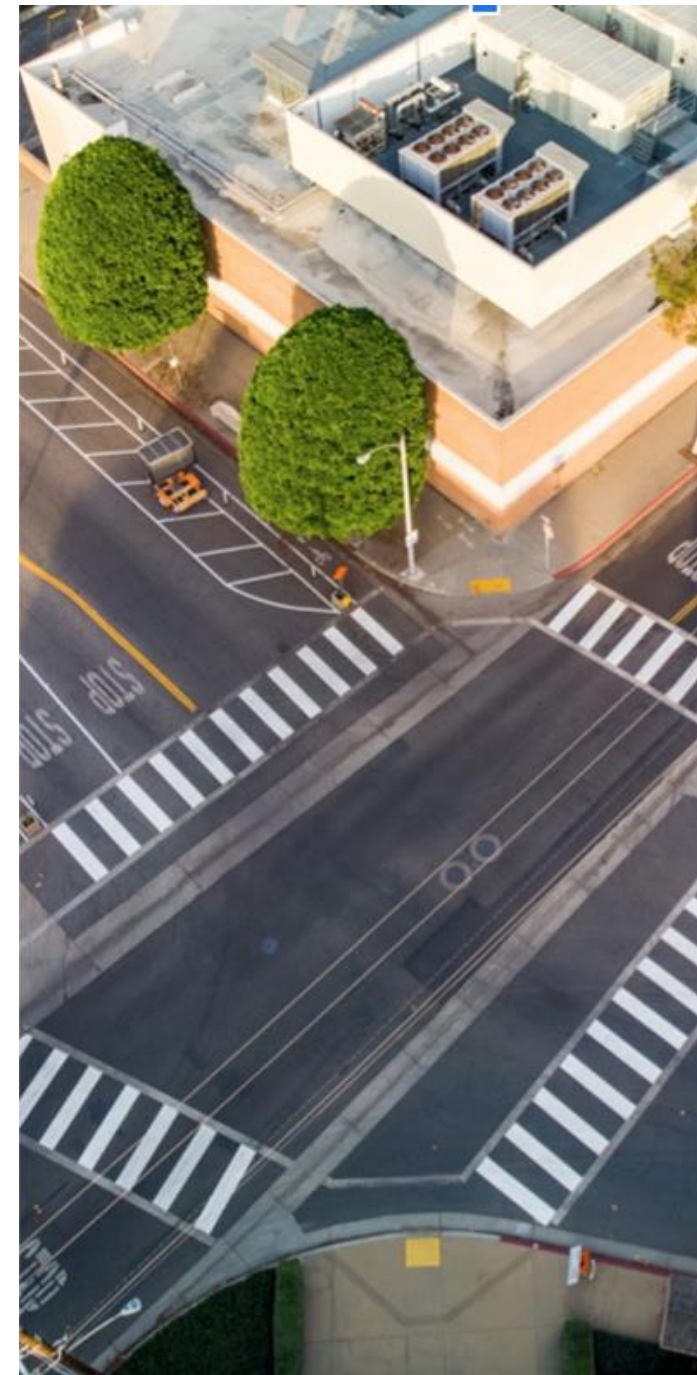
- Improve outdoor business design / parklets
- Create consistent design east-west across
Mission district
- Maintain / add vehicle parking
- Slow vehicle speeds
- Create safer pedestrian crossings
- Add greening / shade

Demonstration Opportunities

- **Temporary materials** - reflective lane tape, delineators, planters
- **Sample options**
 - **High visibility crosswalks**
 - **Curb extensions**
 - **Angled parking**
 - **Dedicated bikeway**
 - **Edge lines**



Glendora demonstration utilized temporary materials: reflective, white and yellow "lane tape"; heavy-duty, crash-resistant security planters; reflective delineators.



The Concepts



What did we consider?

- **Community Input**
- **Best Practices for Design**
- **Design Parameters**
 - ADA Requirements
 - Design and Prevailing Speeds
 - Lane Widths
 - Bus Transit and Fire Truck Mobility
 - Turning Movements and Storage at Intersections (evaluated in Iteris Traffic Study)



Drawn by: N:\Sharepoint\GIS\202100_021_185 South Pasadena_Slow Streets Program\2021_Plan\2021_185_OAK_3117.dwg, Last saved by: zara@alta, Plot date: 11/02/2021 2:38 PM, Plot style table: ALTA\NC2 Standard.ctb



PLAN 1A
SCALE: 1" = 40'

MATCHLINE - SEE BELOW LEFT



PLAN 1B
SCALE: 1" = 40'

MATCHLINE - SEE ABOVE RIGHT

MATCHLINE - SEE SHEET 02



NOT FOR CONSTRUCTION

NOTE: STREET WIDTHS SHOWN ARE APPROXIMATE

SOUTH PASADENA SLOW STREETS PROGRAM, DEMONSTRATION PROJECT
OAK STREET

NOTE: REMOVE, ERADICATE, OR COVER ALL CONFLICTING PAVEMENT MARKINGS AND SIGNS PRIOR TO INSTALLATION

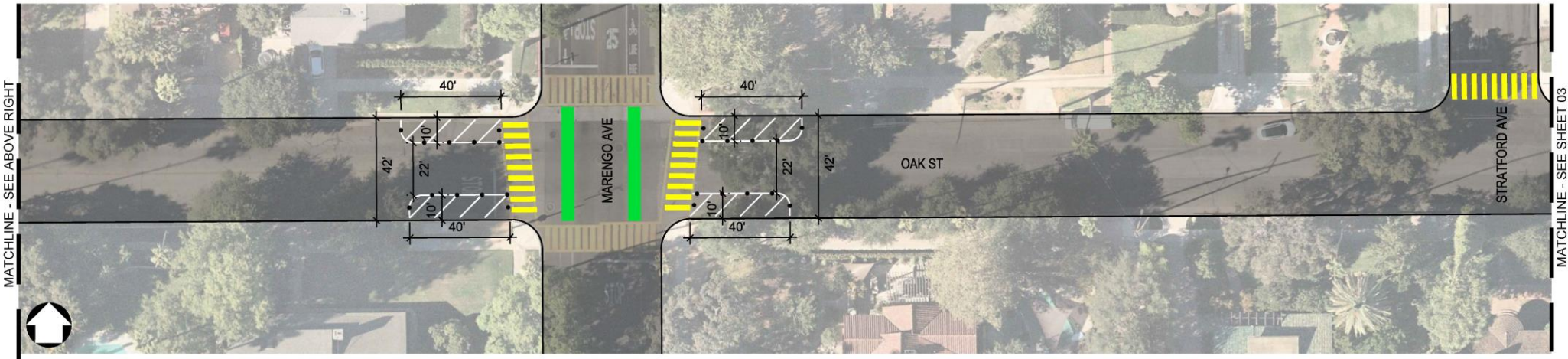
Draw Name: N:\Sharepoint\DOT\202106\2021_185 South Pasadena_Slow Streets Program\CD01_Plan\2021_185_OAK_SFT.dwg, Last saved by: zara@alta.com, Plot date: 11/02/2021 2:48 PM, Plot by: alta, Plot by: alta\NCS\blanckeb, ab



MATCHLINE - SEE SHEET 01

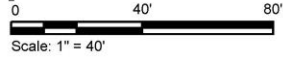
MATCHLINE - SEE BELOW LEFT

PLAN 2A
SCALE: 1" = 20'



MATCHLINE - SEE ABOVE RIGHT

MATCHLINE - SEE SHEET 03



PLAN 2B
SCALE: 1" = 20'



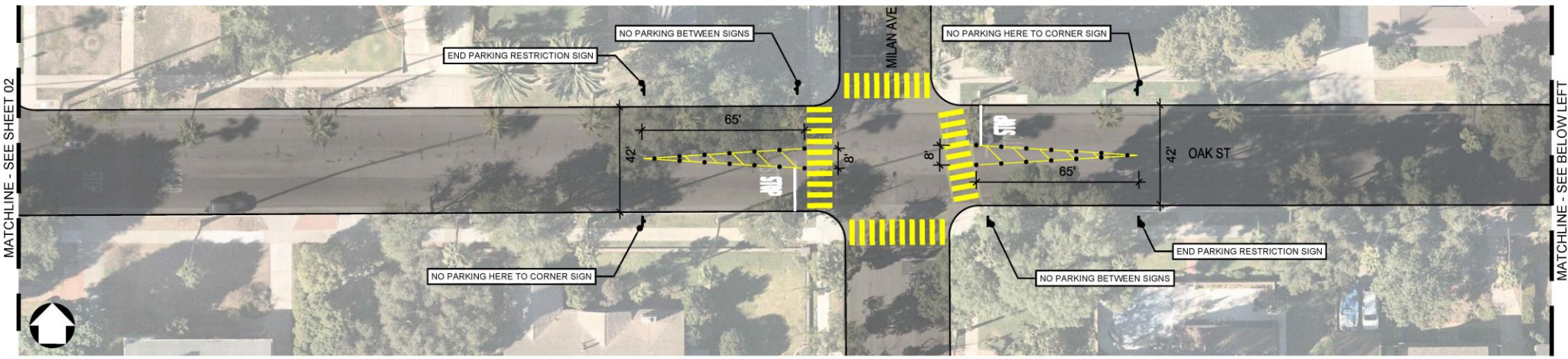
NOT FOR CONSTRUCTION

NOTE: STREET WIDTHS SHOWN ARE APPROXIMATE

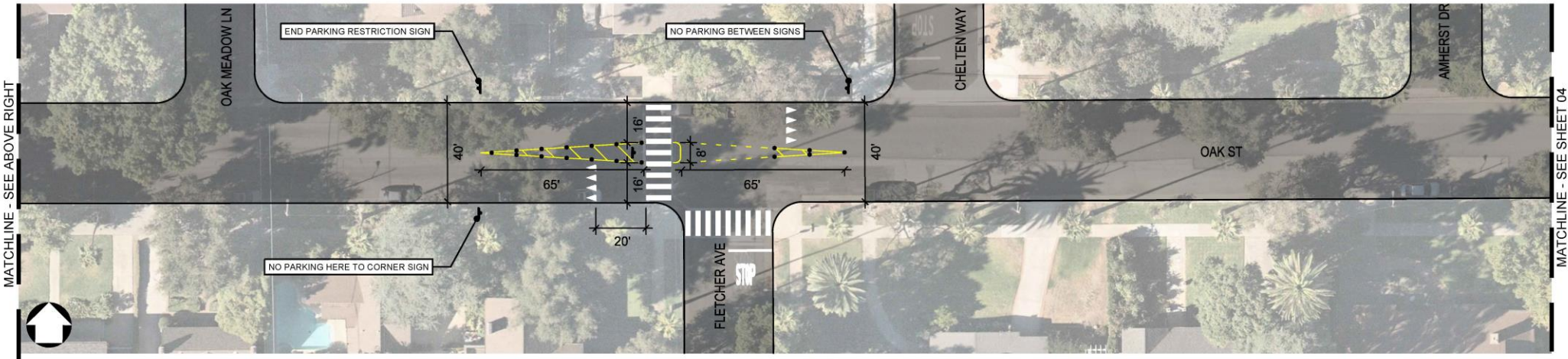
SOUTH PASADENA SLOW STREETS PROGRAM, DEMONSTRATION PROJECT
OAK STREET

NOTE: REMOVE, ERADICATE, OR COVER ALL CONFLICTING
PAVEMENT MARKINGS AND SIGNS PRIOR TO INSTALLATION

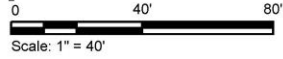
Drawn by: N:\Sharepoint\GIS\2021\0021185 South Pasadena Slow Streets Program\2021_Plan\2021_03_CAK_SPT.dwg, Last saved by: zara@alta.com, Plot date: 11/02/2023 3:42 PM, Plot by: alta\NCS\blanck.d



PLAN 3A
SCALE: 1" = 20'



PLAN 3B
SCALE: 1" = 20'



MATCHLINE - SEE SHEET 02

MATCHLINE - SEE BELOW LEFT

MATCHLINE - SEE ABOVE RIGHT

MATCHLINE - SEE SHEET 04



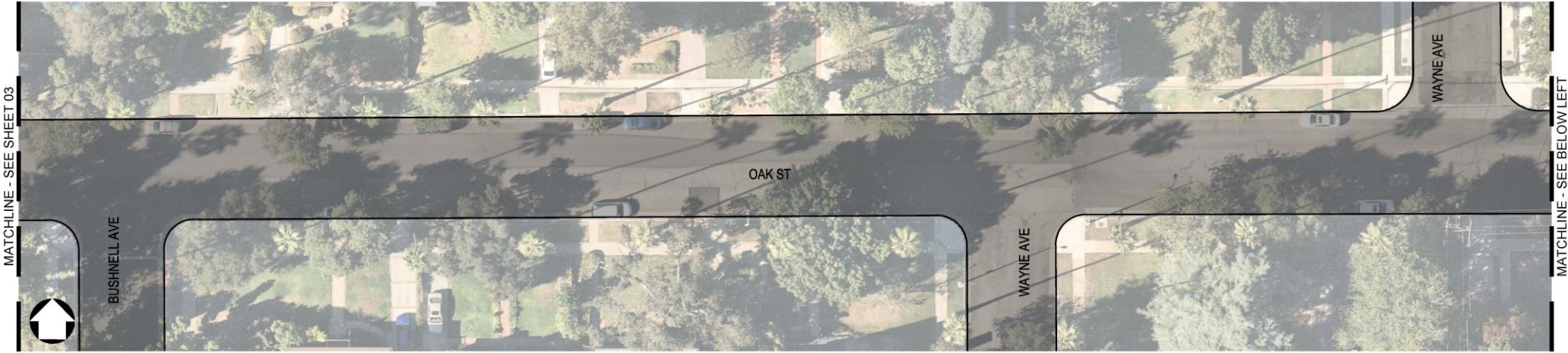
NOT FOR CONSTRUCTION

NOTE: STREET WIDTHS SHOWN ARE APPROXIMATE

SOUTH PASADENA SLOW STREETS PROGRAM, DEMONSTRATION PROJECT
OAK STREET

NOTE: REMOVE, ERADICATE, OR COVER ALL CONFLICTING PAVEMENT MARKINGS AND SIGNS PRIOR TO INSTALLATION

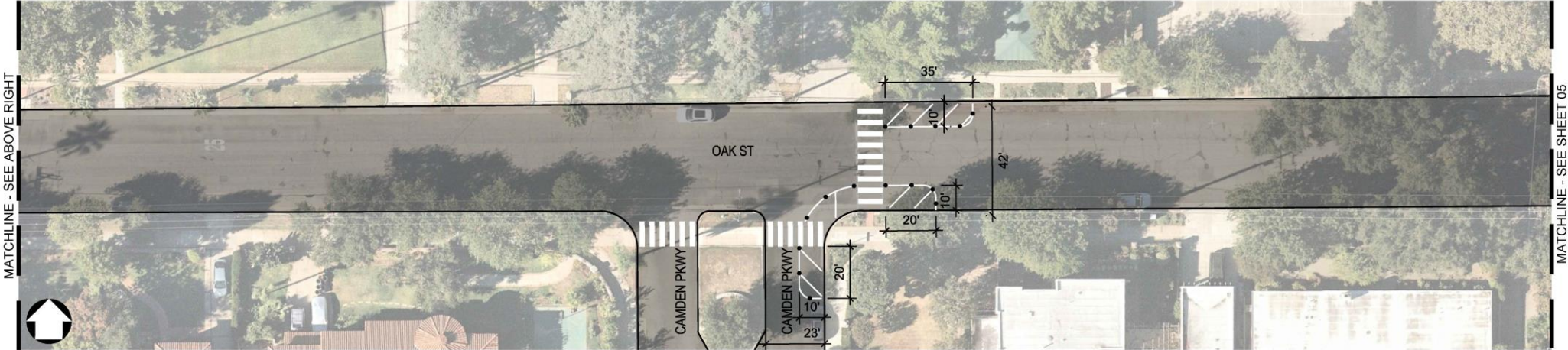
Drawn by: N13049405/05/15/2021 10:00:00 AM South Pasadena, Slow Streets Program/05/15/2021 10:00:00 AM, CAD: JPH, Date: 11/05/2021 2:38 PM, Plot date: 11/05/2021 2:38 PM, Plot by: JPH, Plot title: ALTA/CS/Standard.dwg



MATCHLINE - SEE SHEET 03

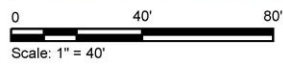
MATCHLINE - SEE BELOW LEFT

PLAN 4A
SCALE: 1" = 20'



MATCHLINE - SEE ABOVE RIGHT

MATCHLINE - SEE SHEET 05



PLAN 4B
SCALE: 1" = 20'



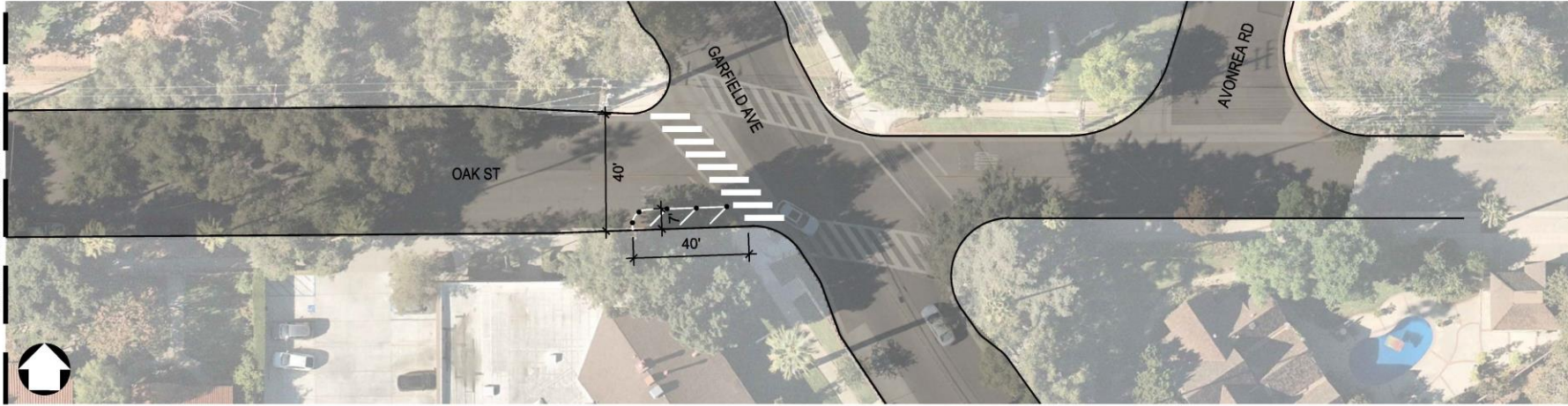
NOT FOR CONSTRUCTION

NOTE: STREET WIDTHS SHOWN ARE APPROXIMATE

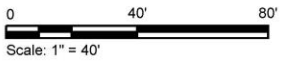
SOUTH PASADENA SLOW STREETS PROGRAM, DEMONSTRATION PROJECT
OAK STREET

NOTE: REMOVE, ERADICATE, OR COVER ALL CONFLICTING
PAVEMENT MARKINGS AND SIGNS PRIOR TO INSTALLATION

MATCHLINE - SEE SHEET 04



PLAN 5A
SCALE: 1" = 20'



NOT FOR CONSTRUCTION

NOTE: STREET WIDTHS SHOWN ARE APPROXIMATE

SOUTH PASADENA SLOW STREETS PROGRAM, DEMONSTRATION PROJECT
OAK STREET

NOTE: REMOVE, ERADICATE, OR COVER ALL CONFLICTING
PAVEMENT MARKINGS AND SIGNS PRIOR TO INSTALLATION

Draw Name: N:\Sharepoint\DOT\202106\2021_1485_South_Pasadena_Slow_Streets_Program\CD011_Plan05A.dwg, User saved by: zandromer, Plot date: 11/02/2021 2:38 PM, Plot by: lalor, ALTA\CS\lbalor.dwg

Draw Name: N:\Sharepoint\GIS\2021000201185 South Pasadena_Slow Streets Program\CD011_Plan\CD011_Plan.dwg Plot date: 1/20/2021 12:18 PM Plot by: lalr. ALTA NCS Standard.ctb



PLAN 1A
SCALE: 1" = 40'

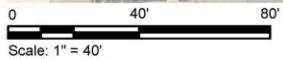
MATCHLINE - SEE BELOW LEFT



PLAN 1B
SCALE: 1" = 40'

MATCHLINE - SEE SHEET 2

MATCHLINE - SEE ABOVE RIGHT



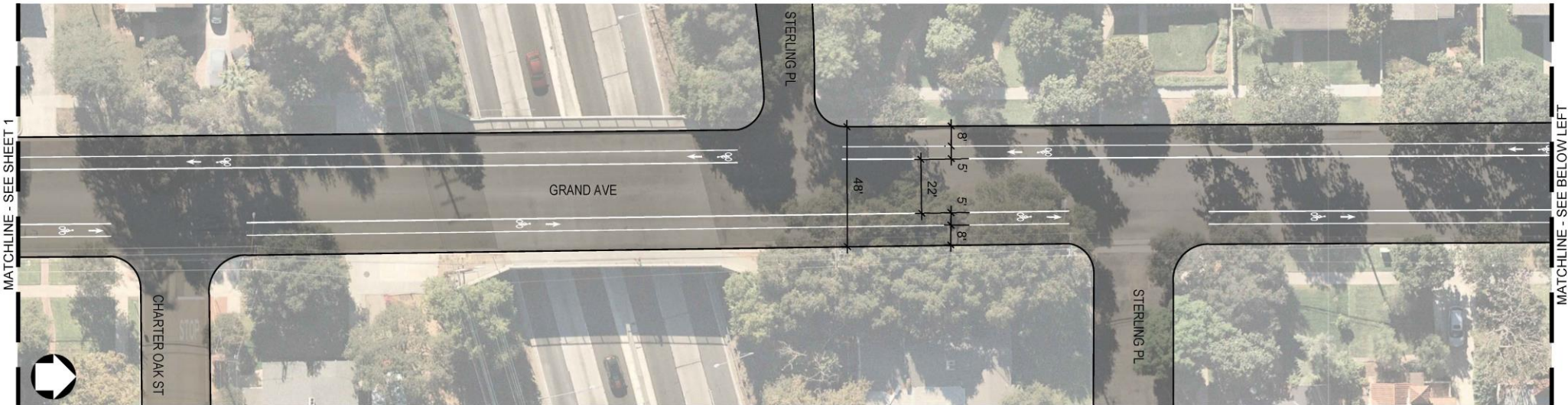
NOT FOR CONSTRUCTION

NOTE: STREET WIDTHS SHOWN ARE APPROXIMATE

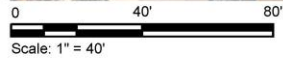
SOUTH PASADENA SLOW STREETS PROGRAM, DEMONSTRATION PROJECT
GRAND AVENUE

NOTE: REMOVE, ERADICATE, OR COVER ALL CONFLICTING
PAVEMENT MARKINGS AND SIGNS PRIOR TO INSTALLATION

Draw Name: N:\Sharepoint\GIS\202106_0201_185 South Pasadena_Slow Streets Program\2021_Plan\2021_185_SPAW03_SIT_Cycle.dwg, Last saved by: Zandromae, Plot date: 11/03/2021 12:51 PM, Plot style table: ALTA_NCS_Standard.ctb



PLAN 2A
SCALE: 1" = 40'



PLAN 2B
SCALE: 1" = 40'



NOT FOR CONSTRUCTION

NOTE: STREET WIDTHS SHOWN ARE APPROXIMATE

SOUTH PASADENA SLOW STREETS PROGRAM, DEMONSTRATION PROJECT
GRAND AVENUE

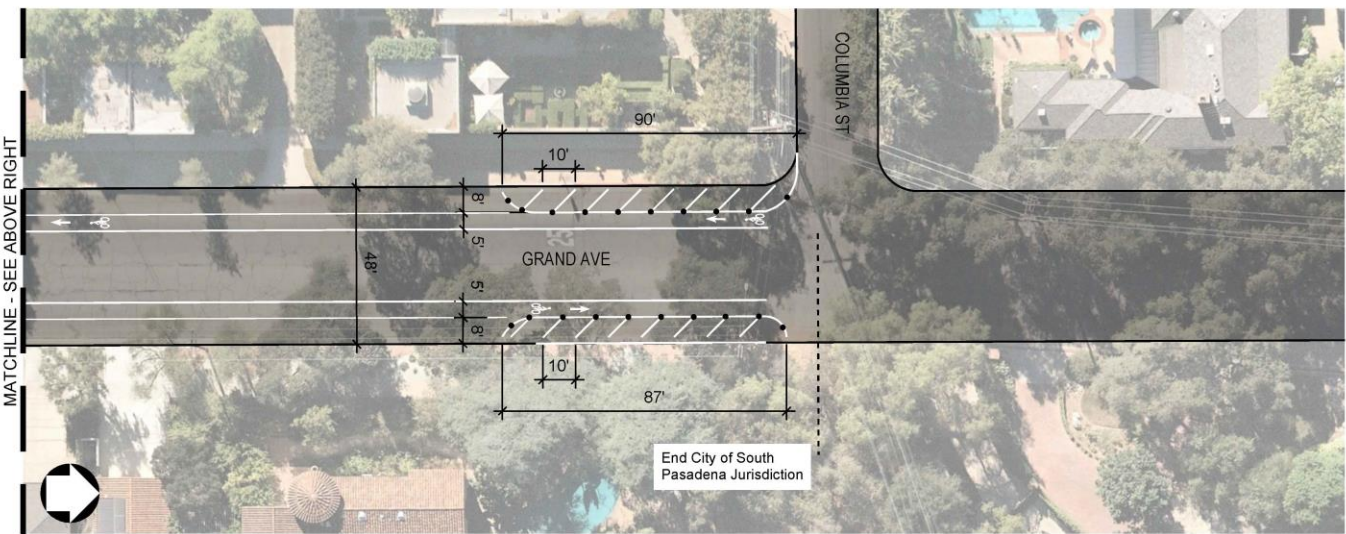
NOTE: REMOVE, ERADICATE, OR COVER ALL CONFLICTING PAVEMENT MARKINGS AND SIGNS PRIOR TO INSTALLATION

Draw Name: N:\Share\Projects\2021\185 South Pasadena_Slow Streets Program\2021_Plan\2021_185_SPAW01_SIT_Cycle.dwg, User: jzandor, Date: 1/10/2021 12:25 PM, Plot Date: 1/10/2021 12:25 PM, Plot Style: alta.ctb, Plot Size: Standard



MATCHLINE - SEE SHEET 2 MATCHLINE - SEE SHEET 4 MATCHLINE - SEE BELOW LEFT MATCHLINE - SEE BELOW LEFT

PLAN 3A
SCALE: 1" = 40'



MATCHLINE - SEE ABOVE RIGHT

PLAN 3B
SCALE: 1" = 40'



NOT FOR CONSTRUCTION

NOTE: STREET WIDTHS SHOWN ARE APPROXIMATE

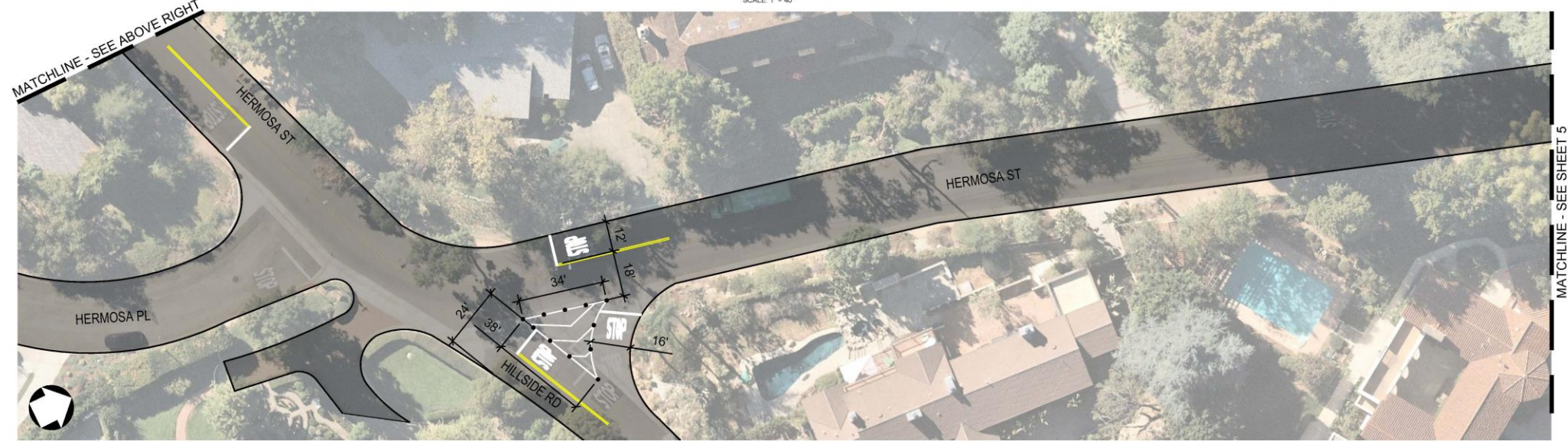
SOUTH PASADENA SLOW STREETS PROGRAM, DEMONSTRATION PROJECT
GRAND AVENUE

NOTE: REMOVE, ERADICATE, OR COVER ALL CONFLICTING PAVEMENT MARKINGS AND SIGNS PRIOR TO INSTALLATION

Draw Name: N:\Share\PROJECTS\2021\185 South Pasadena Slow Streets Program\2021_Plan\2021_185_SPM.dwg Plot date: 1/10/2021 2:25 PM Plot by: lalr-acta NCS Standard



PLAN 4A
SCALE: 1" = 40'



0 40' 80'
Scale: 1" = 40'

PLAN 4B
SCALE: 1" = 40'



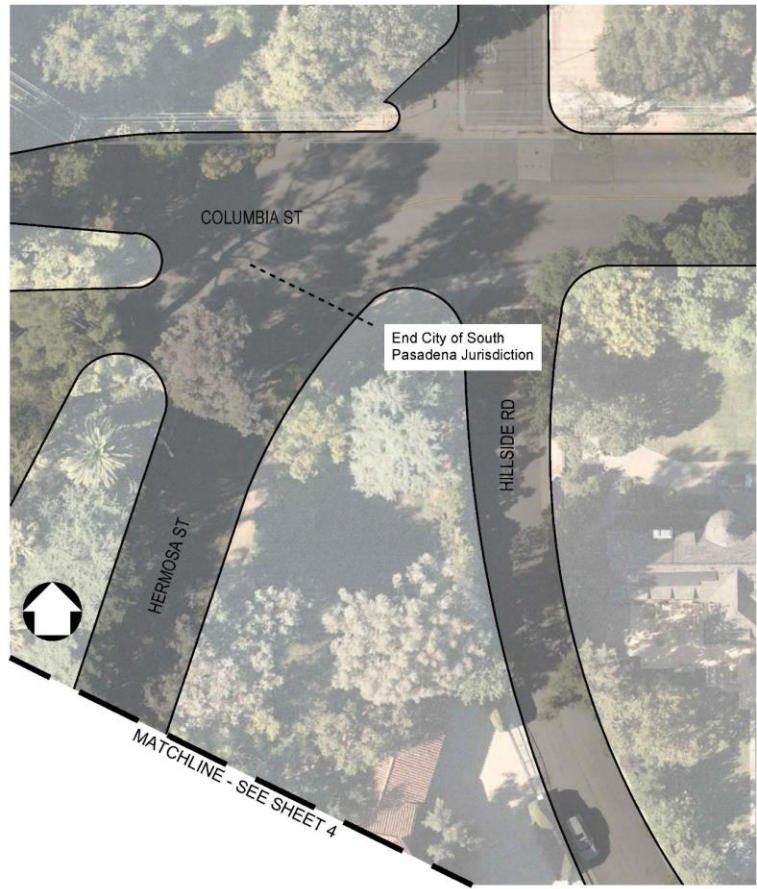
NOT FOR CONSTRUCTION

NOTE: STREET WIDTHS SHOWN ARE APPROXIMATE

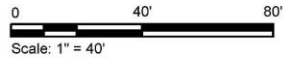
SOUTH PASADENA SLOW STREETS PROGRAM, DEMONSTRATION PROJECT
HERMOSA STREET

NOTE: REMOVE, ERADICATE, OR COVER ALL CONFLICTING
PAVEMENT MARKINGS AND SIGNS PRIOR TO INSTALLATION

Drawn by: N:\Share\PROJECTS\2021\185 South Pasadena Slow Streets Program\CD\1_Draft\2021_185_SlowSt_0117.dwg, Laid out by: Zardone, Plot date: 1/10/2021 2:25 PM, Plot by: ALTA



PLAN
SCALE: 1" = 40'



NOT FOR CONSTRUCTION

NOTE: STREET WIDTHS SHOWN ARE APPROXIMATE

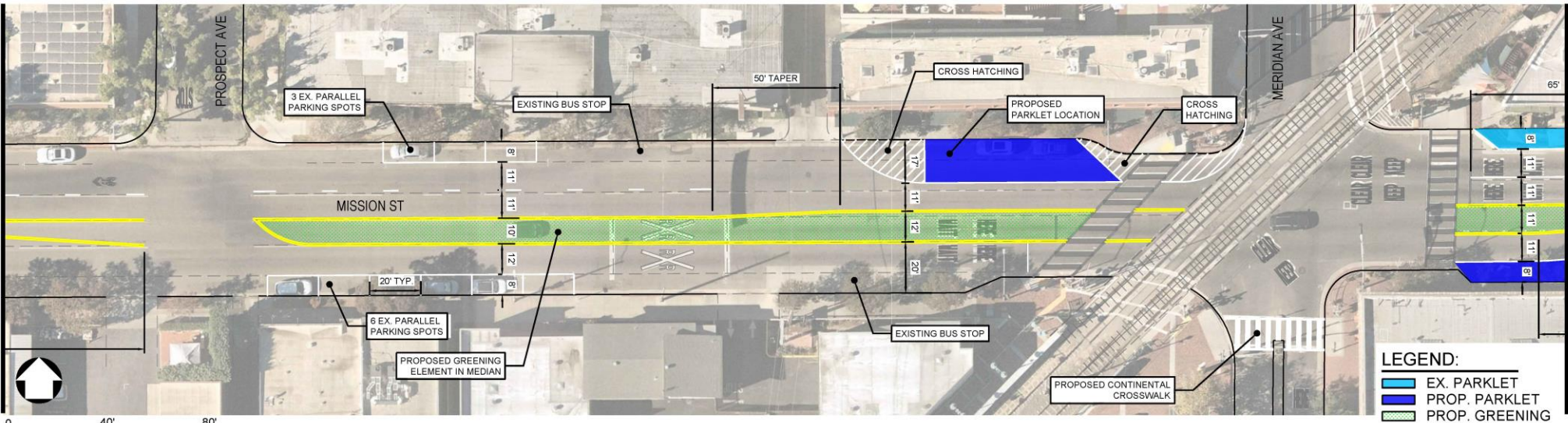
SOUTH PASADENA SLOW STREETS PROGRAM, DEMONSTRATION PROJECT
HERMOSA STREET

**NOTE: REMOVE, ERADICATE, OR COVER ALL CONFLICTING
PAVEMENT MARKINGS AND SIGNS PRIOR TO INSTALLATION**

Date Revison: N:\Standard\PROJECT\20210120\2021-106 MISSION ST\106 MISSION ST\106 MISSION ST.dwg, Last saved by: M:\sps\jrp, File size: 13102021 10:14 AM, File type: AutoCAD LT, NCS Standard 10



PLAN 1A
SCALE: 1" = 40'



PLAN 1B
SCALE: 1" = 40'

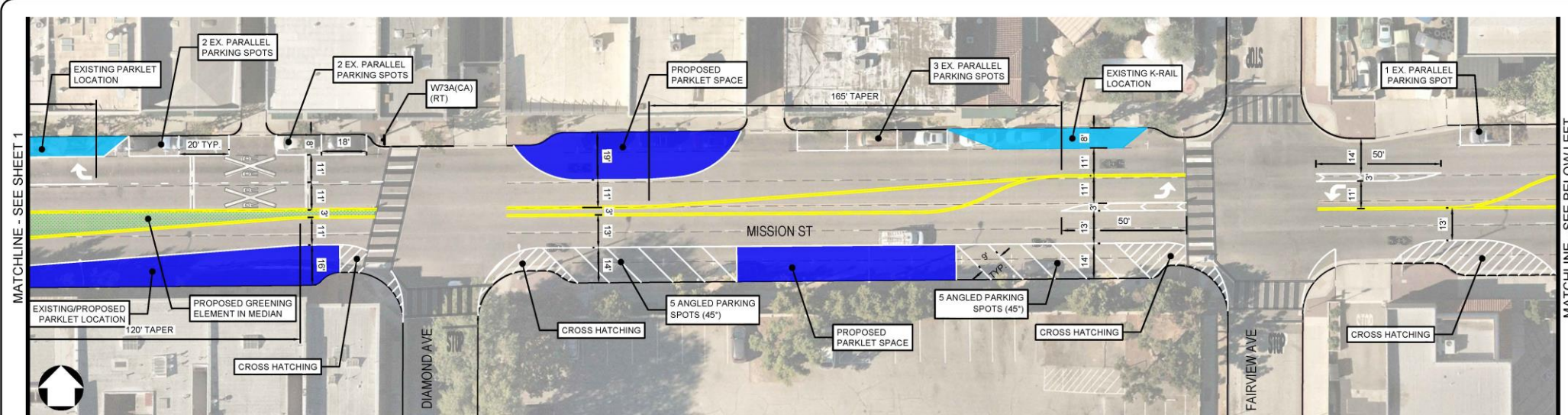


NOT FOR CONSTRUCTION

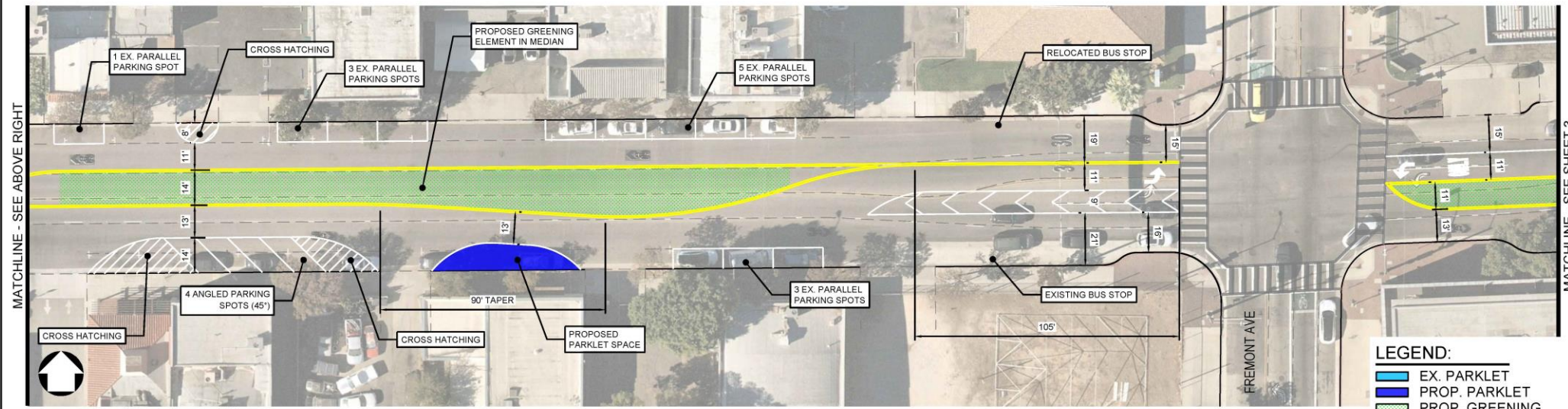
SOUTH PASADENA SLOW STREETS PROGRAM, DEMONSTRATION PROJECT
MISSION STREET

NOTE: BARRIER TYPE AND SURFACE MATERIALS FOR PARKLET AREAS TO BE DETERMINED.

NOTE: REMOVE, ERADICATE, OR COVER ALL CONFLICTING PAVEMENT MARKINGS AND SIGNS PRIOR TO INSTALLATION



PLAN 1C
SCALE: 1" = 40'



PLAN 1D
SCALE: 1" = 40'

LEGEND:

- EX. PARKLET
- PROP. PARKLET
- PROP. GREENING

Date Revison: U:\Shared\PROJECTS\2021\106 South Pasadena, San Street Program\CA001_Plan\2021_106 MISSION ST.dwg, Last saved by: Manojkumar, File date: 12/10/2021 10:04 AM, File type: AutoCAD LT 2010 Standard LTB



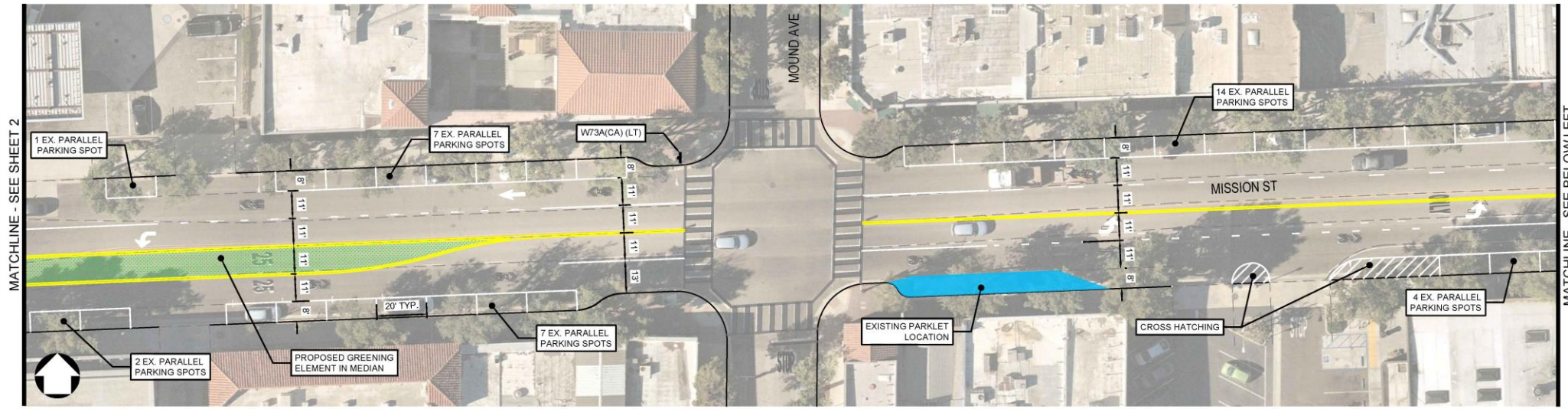
NOT FOR CONSTRUCTION

NOTE: BARRIER TYPE AND SURFACE MATERIALS FOR PARKLET AREAS TO BE DETERMINED.

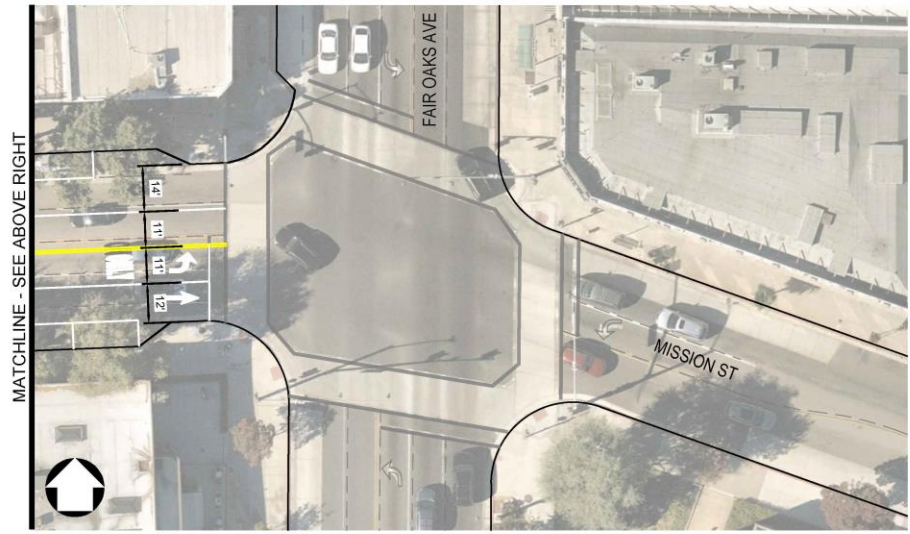
SOUTH PASADENA SLOW STREETS PROGRAM, DEMONSTRATION PROJECT
MISSION STREET

NOTE: REMOVE, ERADICATE, OR COVER ALL CONFLICTING PAVEMENT MARKINGS AND SIGNS PRIOR TO INSTALLATION

Draw Review: U:\Standard\PROJECT\20210120\2021-106 Mission Street Program\CAD\01_Plan\2021-106 MISSION STR.dwg, Last saved by: Maqsoodkhan, Plot date: 12/10/2021 10:04 AM, Plot style table: ALTA.NCS, Standard: US



PLAN 1E
SCALE: 1" = 40'



PLAN 1F
SCALE: 1" = 40'

- LEGEND:**
- EX. PARKLET
 - PROP. PARKLET
 - PROP. GREENING



NOT FOR CONSTRUCTION

NOTE: BARRIER TYPE AND SURFACE MATERIALS FOR PARKLET AREAS TO BE DETERMINED.

SOUTH PASADENA SLOW STREETS PROGRAM, DEMONSTRATION PROJECT
MISSION STREET

NOTE: REMOVE, ERADICATE, OR COVER ALL CONFLICTING PAVEMENT MARKINGS AND SIGNS PRIOR TO INSTALLATION

Urban Design and Placemaking



Goals

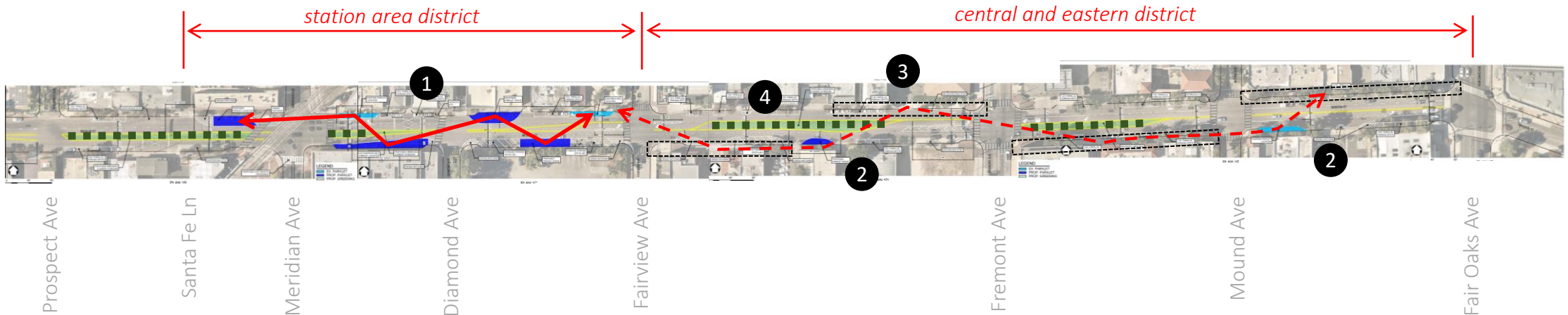
1. Continue to support the **economic recovery** of businesses by providing outdoor spaces
2. Improve the quality, **consistency** and comfort of parklet spaces
3. Provide a **range of program** to serve variety of businesses, increase vitality and attraction of the corridor, provide a variety of activities at different times of day
4. Increase the **walkability** of the street
5. Add **greening** to the corridor
6. Improve the **experience** of Mission Street as **one coherent main-street district** from Meridian to Fair Oaks

The Full Demonstration

Legend:

- Parklet (proposed)
- Parklet (existing)
- Urban Greening (proposed)
- Additional Parklet Infill Opportunities

- 1 A strong grouping of parklet locations in the station area district will help provide the critical mass needed for vibrancy. Parklets will be spaced in alternating arrangement on both sides of street.
- 2 More isolated parklet locations in the central and eastern district will provide local benefit to adjacent businesses.
- 3 To establish a full district strolling experience, take over additional parking stalls to infill new parklets OR locate a rhythm of additional streetscape elements to better link a district-wide experience.
- 4 Unused vehicular areas within new demonstration layout could be painted or used to promote urban greening with potted trees, help slow traffic, and connect the district.



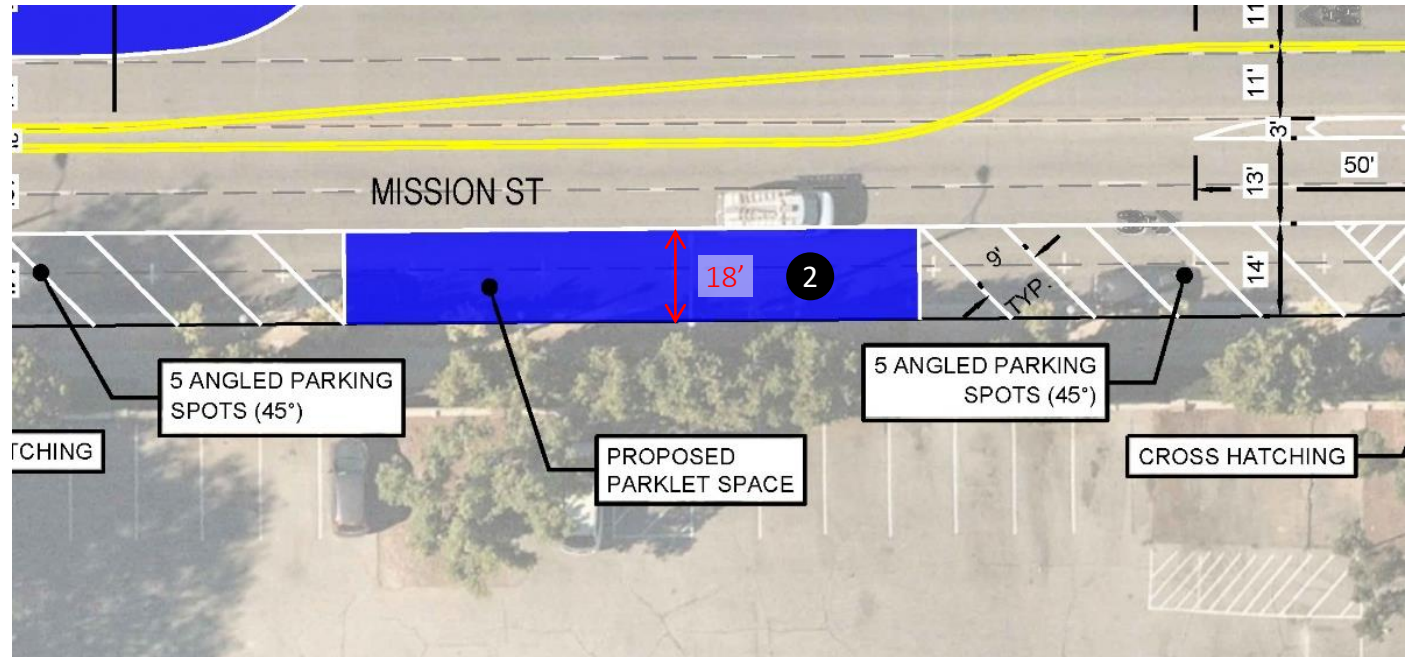
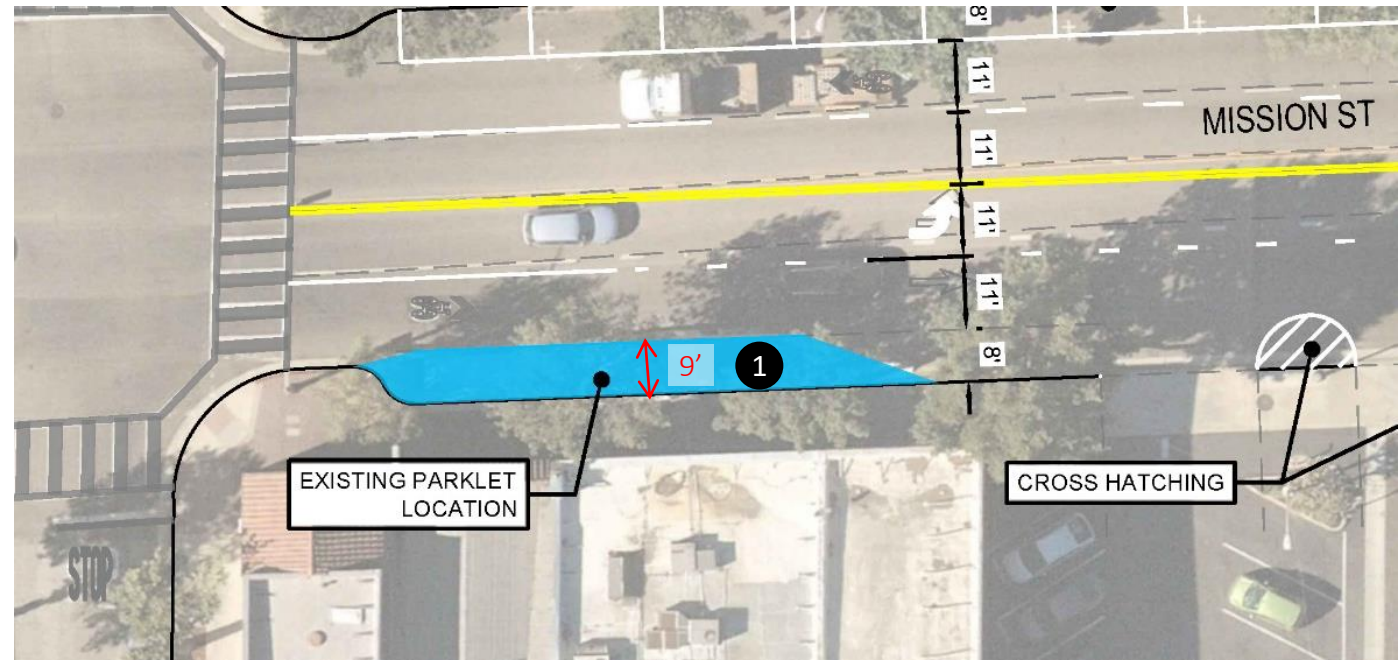
Parklet Spaces

- 1** Parallel Parking Spaces:

 - 8-9' deep, more shallow spaces but able to be applied within existing parking spaces

- 2** Angled Parking Spaces:

 - 18' deep, provides significantly more parklet space but would need to be applied as part of the larger roadway demonstration and restriping of entire roadway section.



Parklet Programming

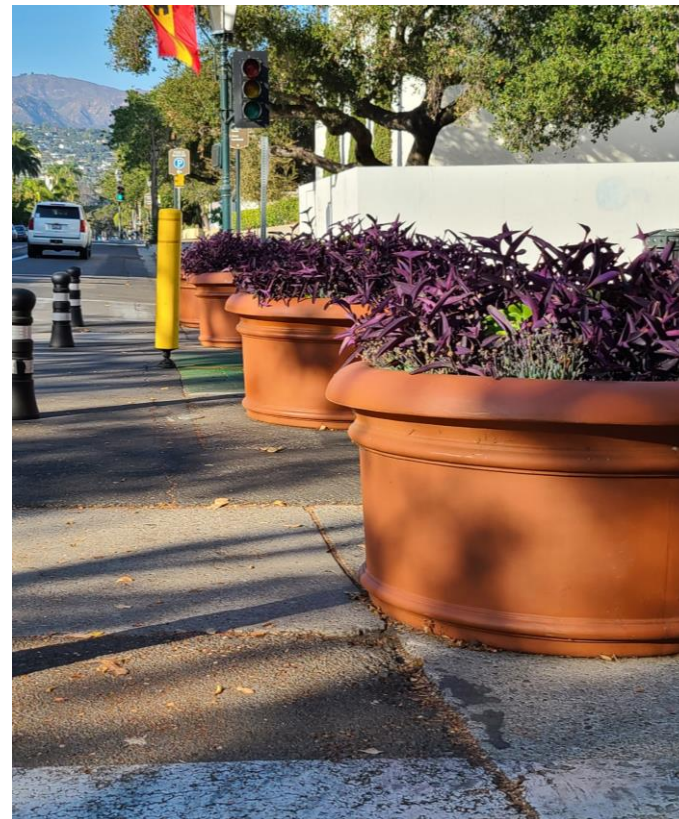
Parklets can be to serve a broad range of user types and businesses, some examples:

- 1 Outdoor Dining Restaurants
- 2 Other Retail Food Businesses (cafes, ice cream shops, bars)
- 3 Public Art Spaces
- 4 Pop-up Events and Placemaking
- 5 Green Spaces



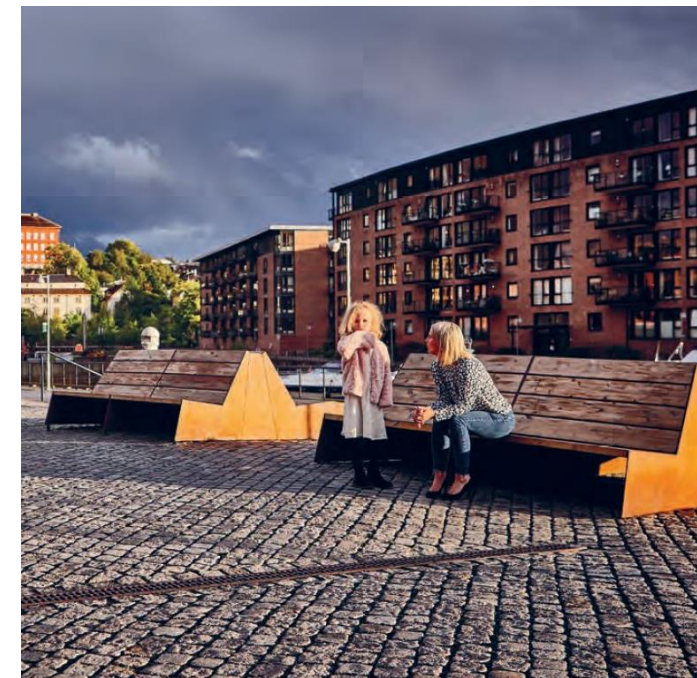
Urban Greening

- Provide softness and shade to the Mission corridor
- Help slow traffic
- Help provide a cohesive look and connected experience to the district

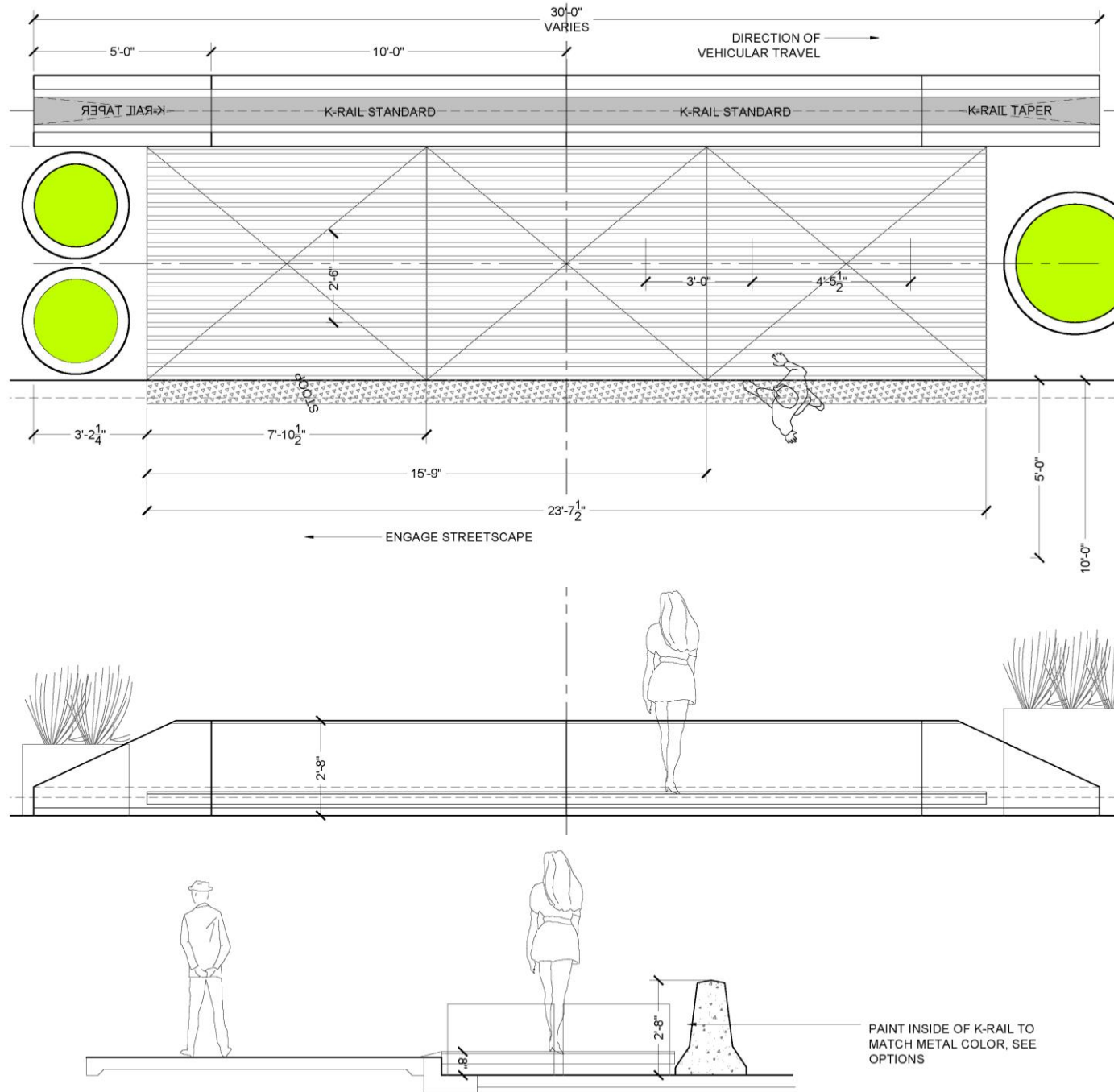


Demonstration Parklet Vestre

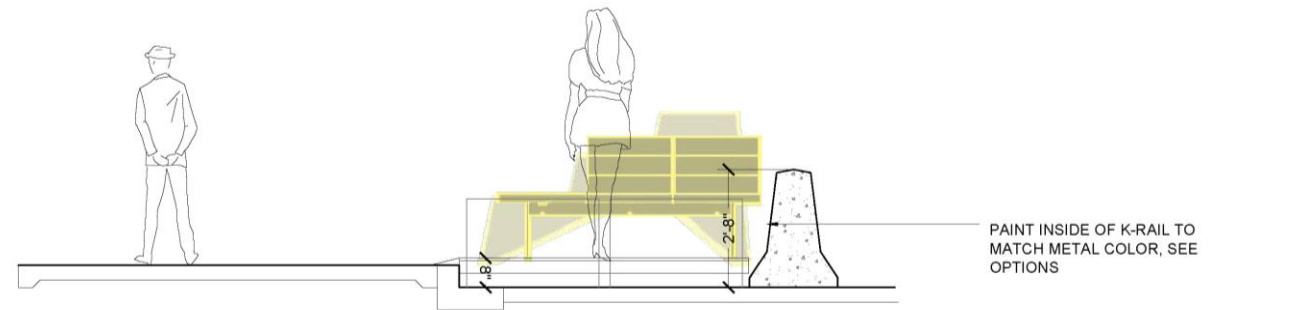
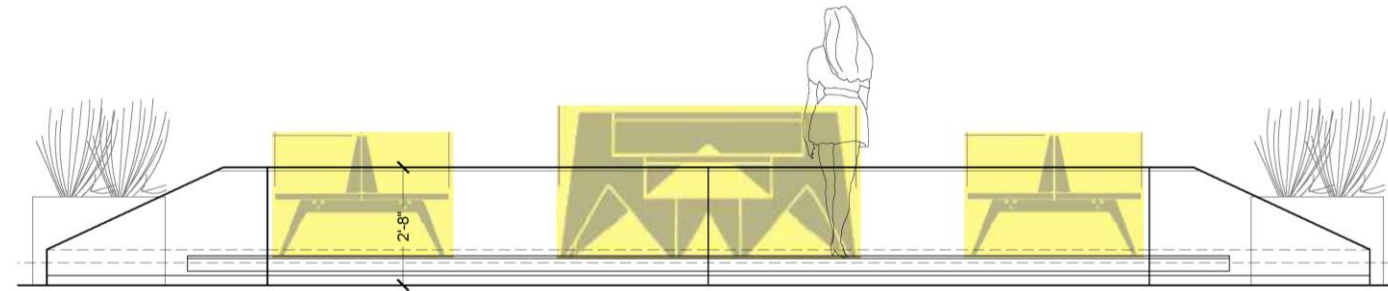
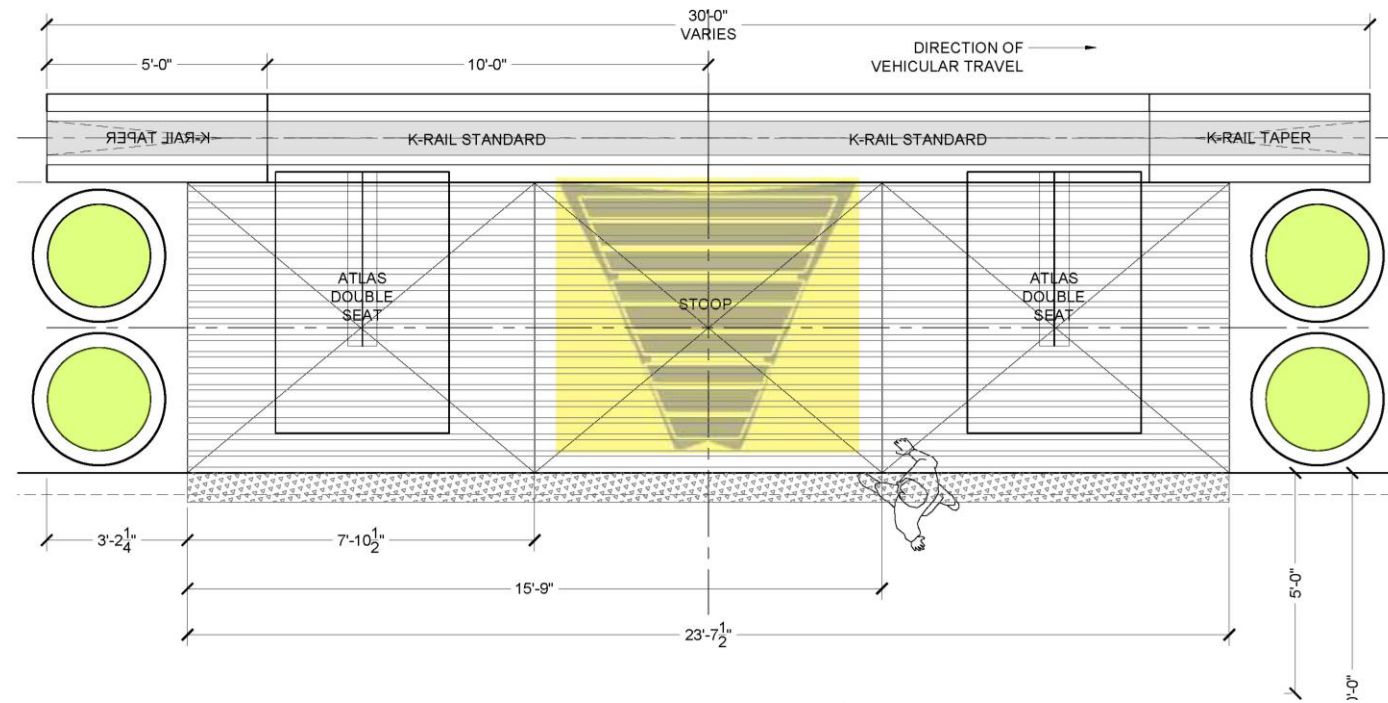
- Prefabricated system – simple purchase and install, limitations in shape and size
- Manufactured in Scandinavia; high sustainability standards
- Longevity guarantee



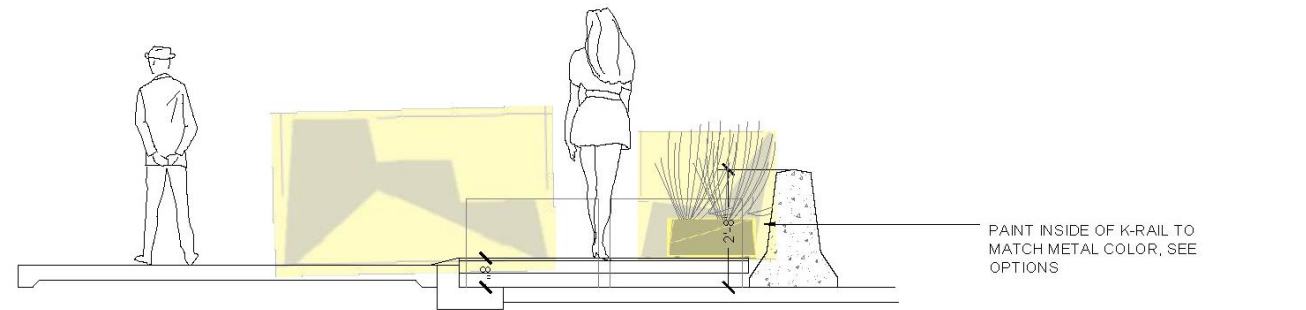
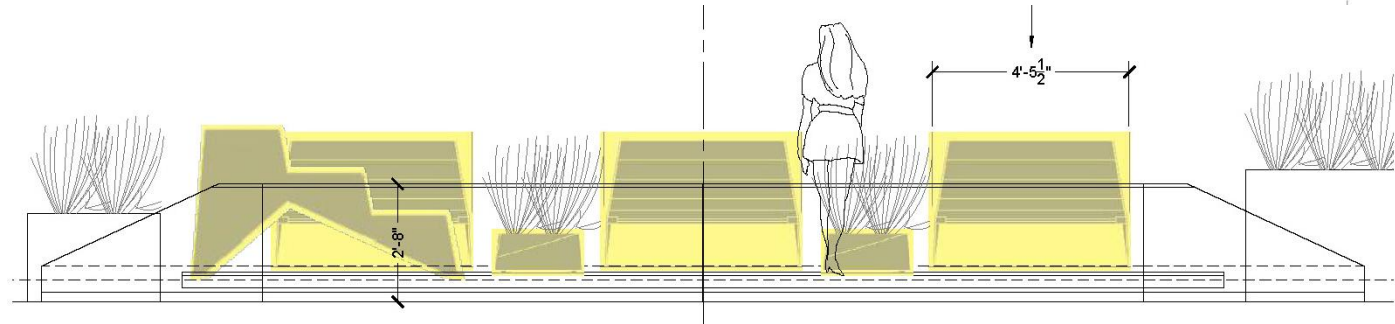
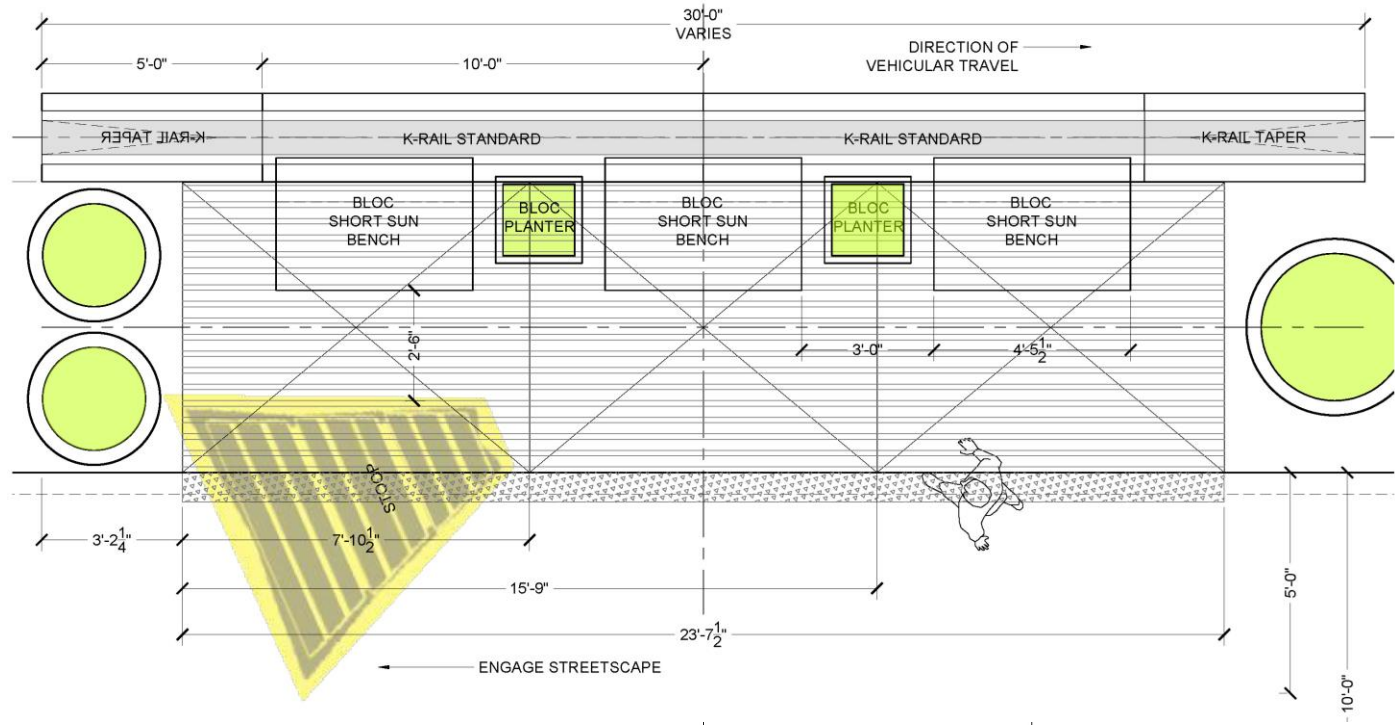
Demonstration Parklet Vestre Floor and Edges



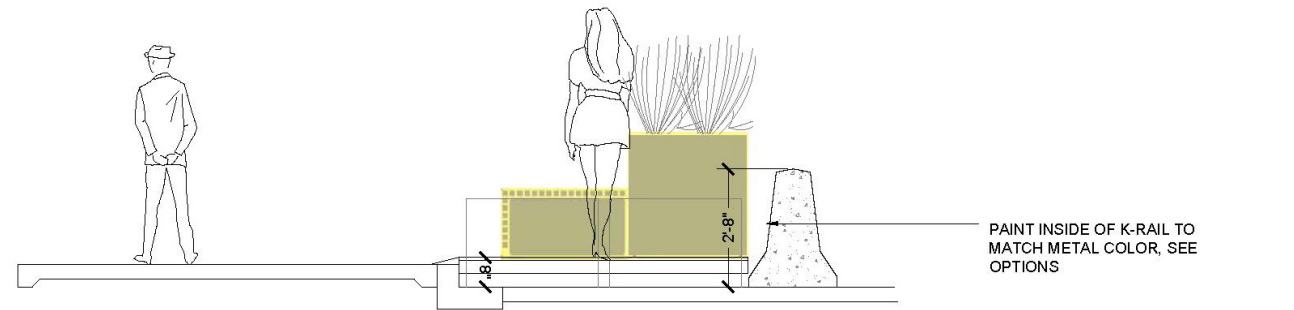
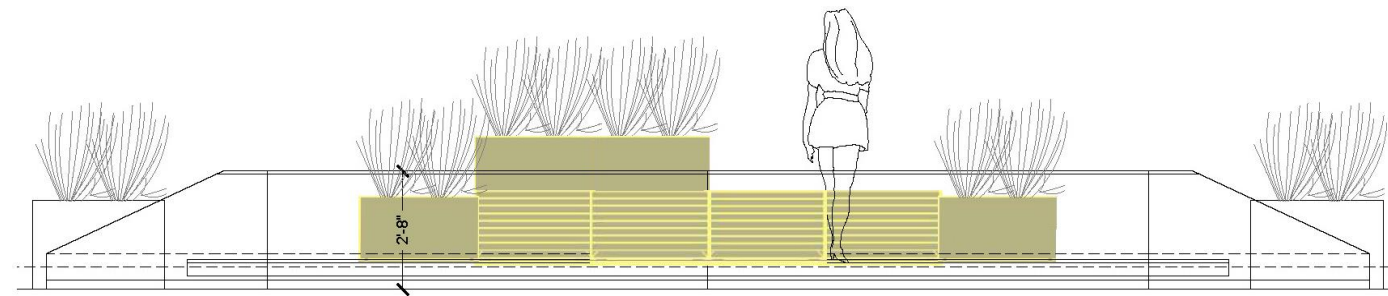
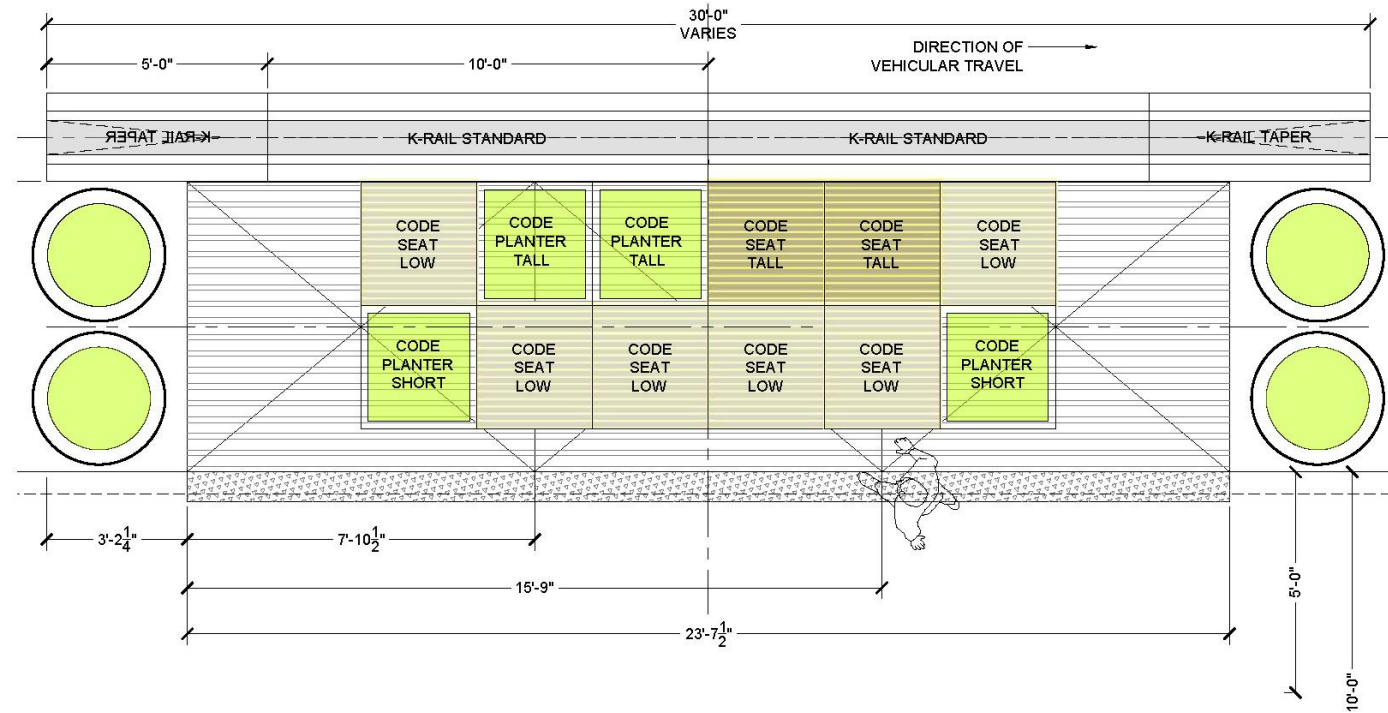
Demonstration Parklet Vestre Furniture Combo 1



Demonstration Parklet Vestre Furniture Combo 2

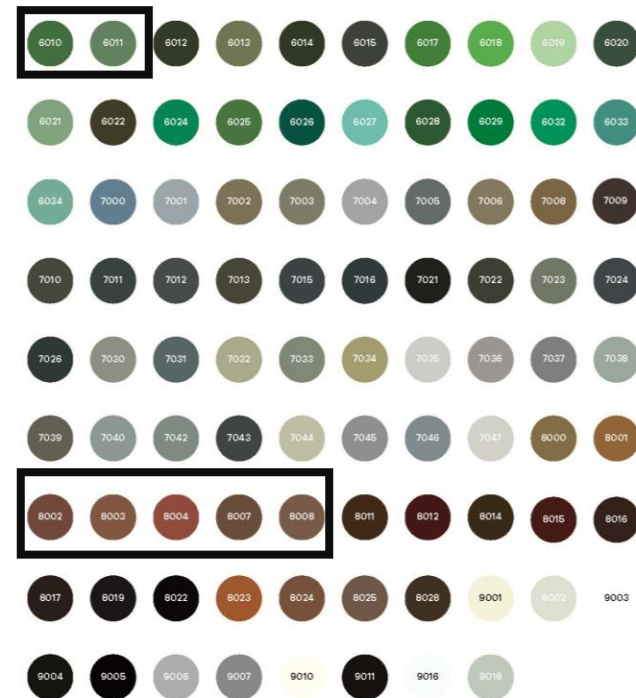


Demonstration Parklet Vestre Furniture Combo 3



Demonstration Parklet Vestre Standard Colors

Our standard colors



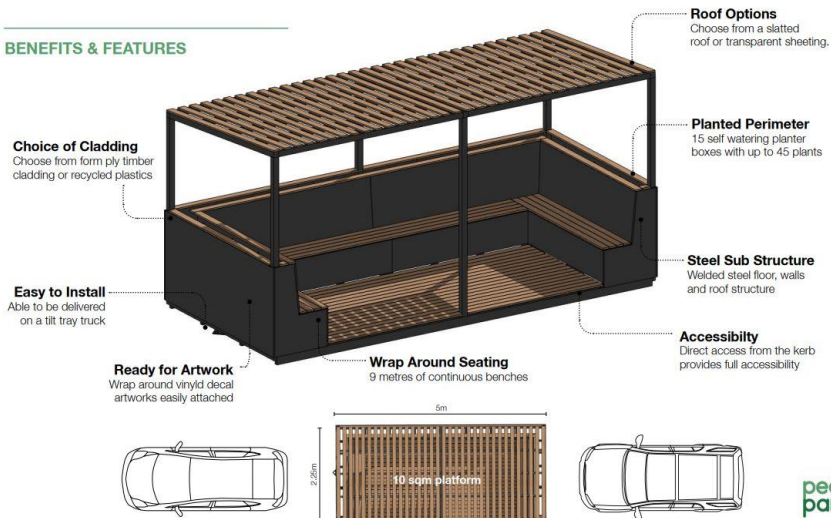
We offer all RAL Classic colors at no extra cost. Our products are also available powder-coated in NCS and other color systems for a small additional cost. Please note that not all colors are reproduced accurately on paper.

Demonstration Parklet People Parkers

PERGOLA PARKLET SPEC SHEET

A covered outdoor seating platform able to be easily installed and removed.

BENEFITS & FEATURES



DETAILS

Weight

Without Plants - 1250kg
With Plants - 1400kg

Dimensions

5m Long | 2.25m Wide | 2.4m High

Cladding Options

Choose from Replas Recycled Plastic products or Formply and Merbau Hardwood Timbers

Optional Extras

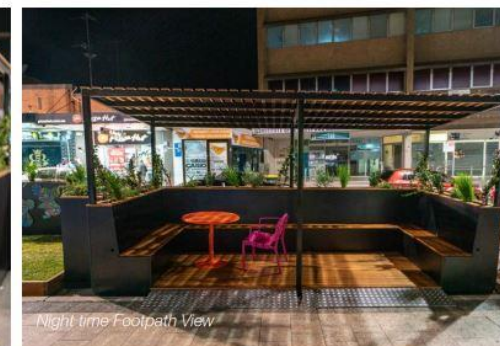
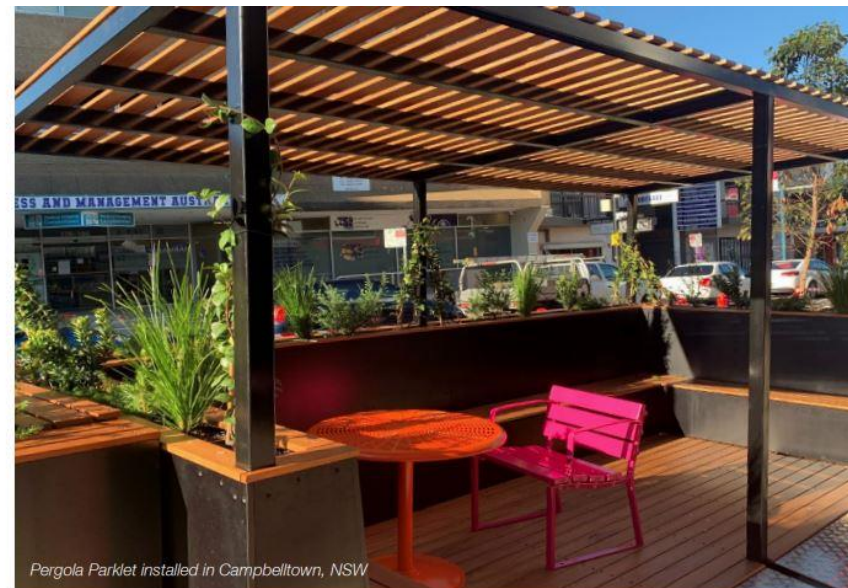
Solar Powered Lighting
Pre Planted Native Planter Boxes
Street Library Book Share Attachment
Wraparound Decal Artworks
Signage

Installation and delivery

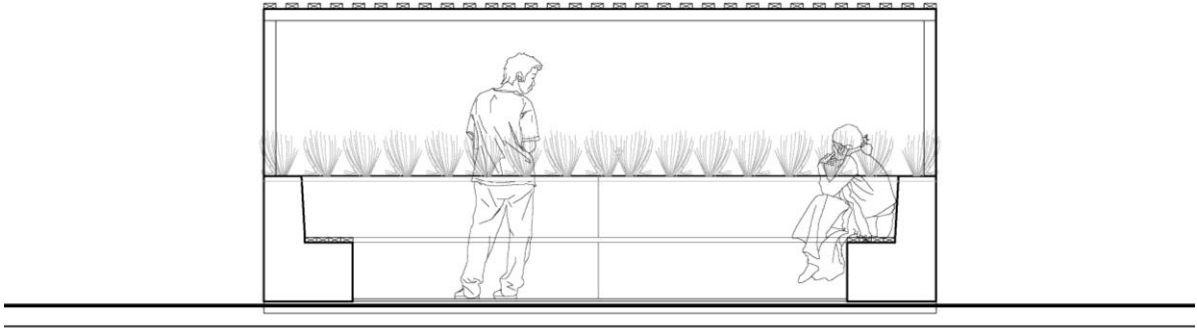
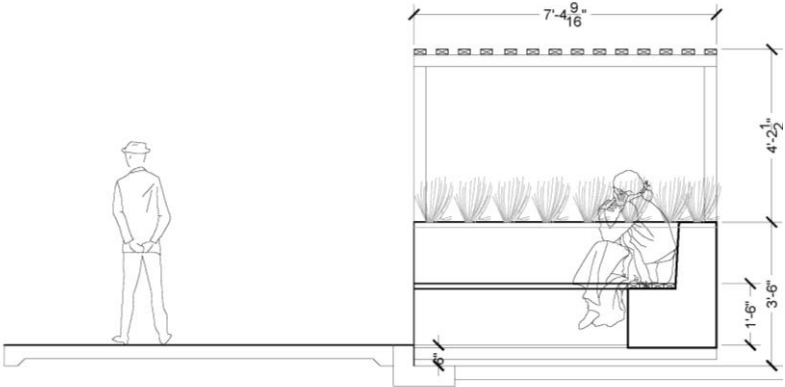
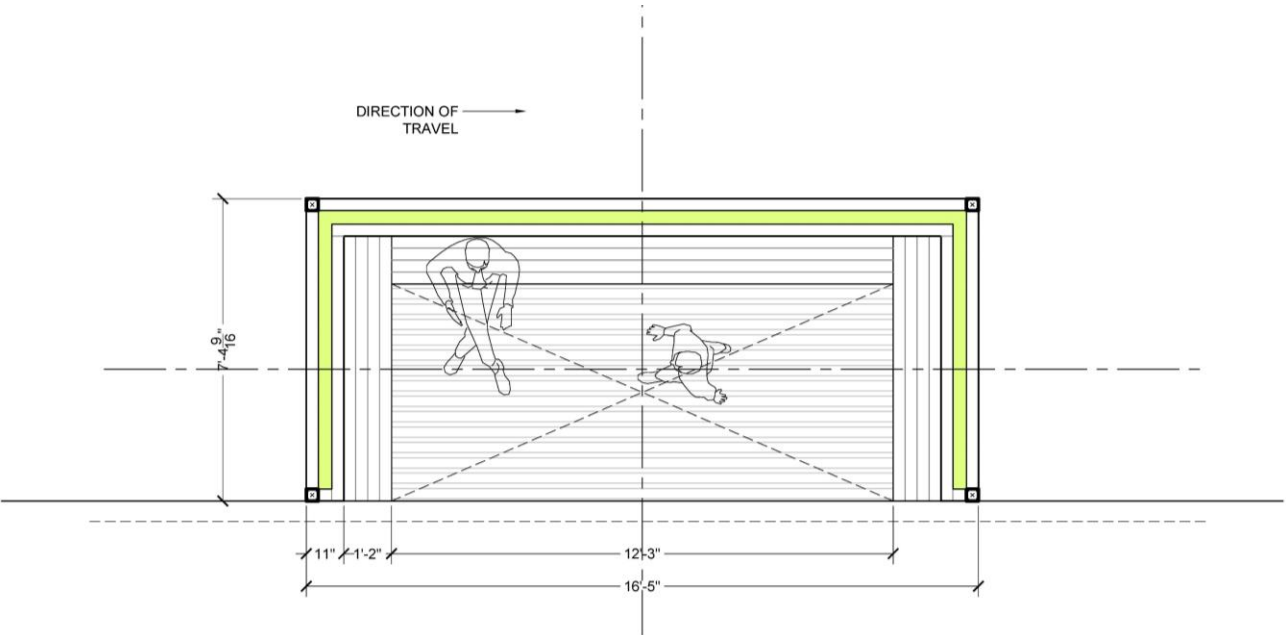
Delivery available nationwide
Installation by People Parkers available in Qld, NSW & Vic

Production Leadtime

6-8 Week production leadtime
Some pre fabricated units available



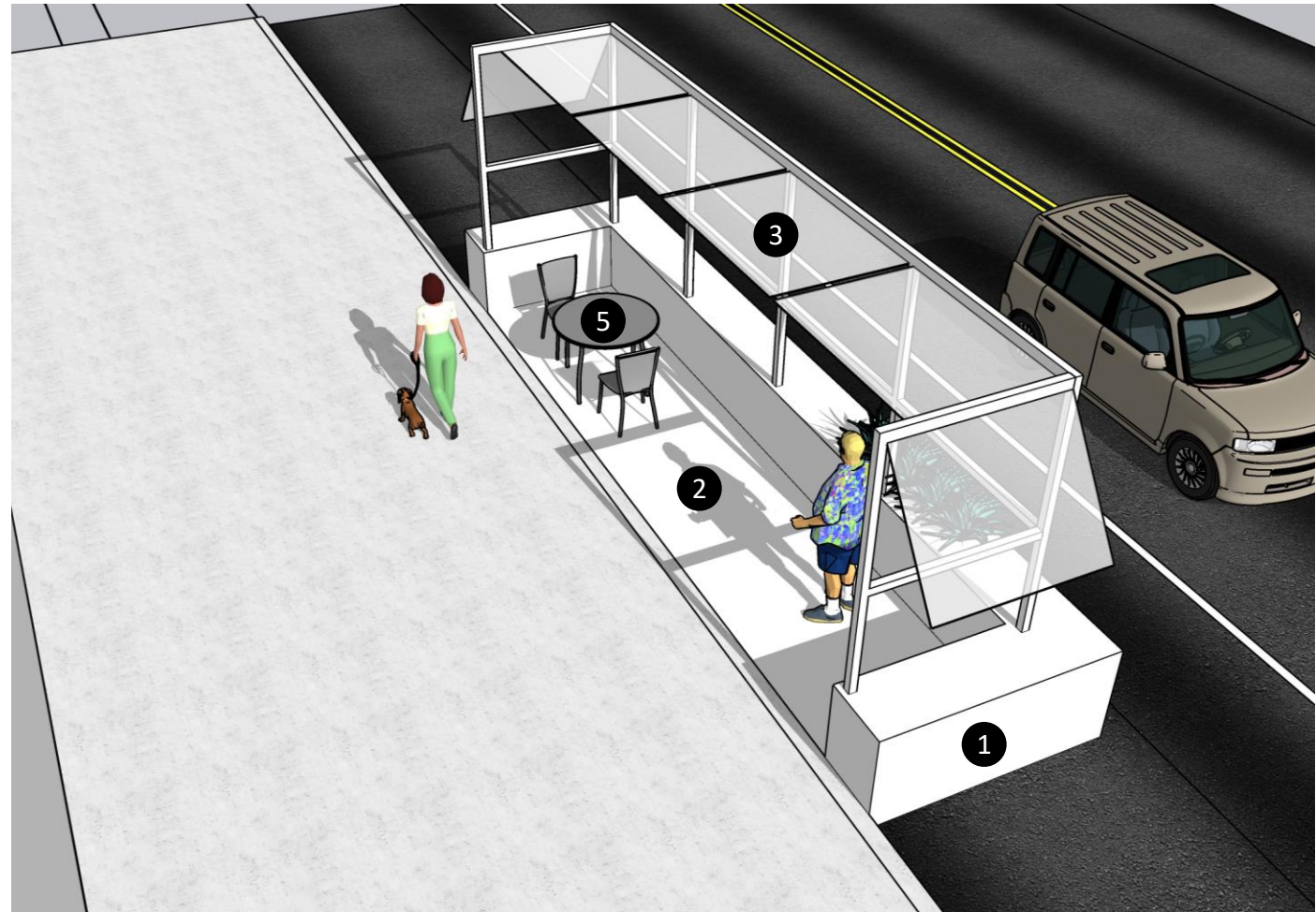
Demonstration Parklet People Parkers



Demonstration Parklet

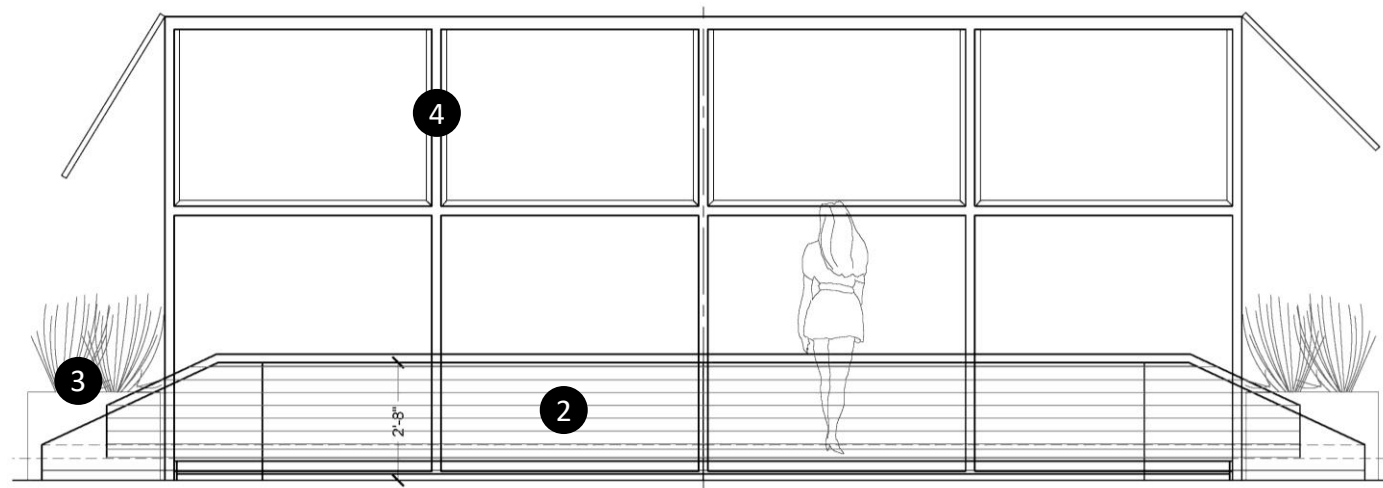
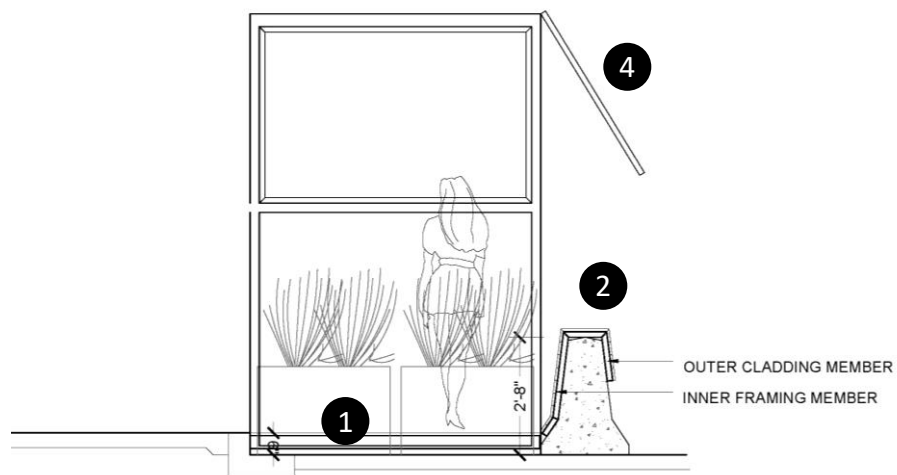
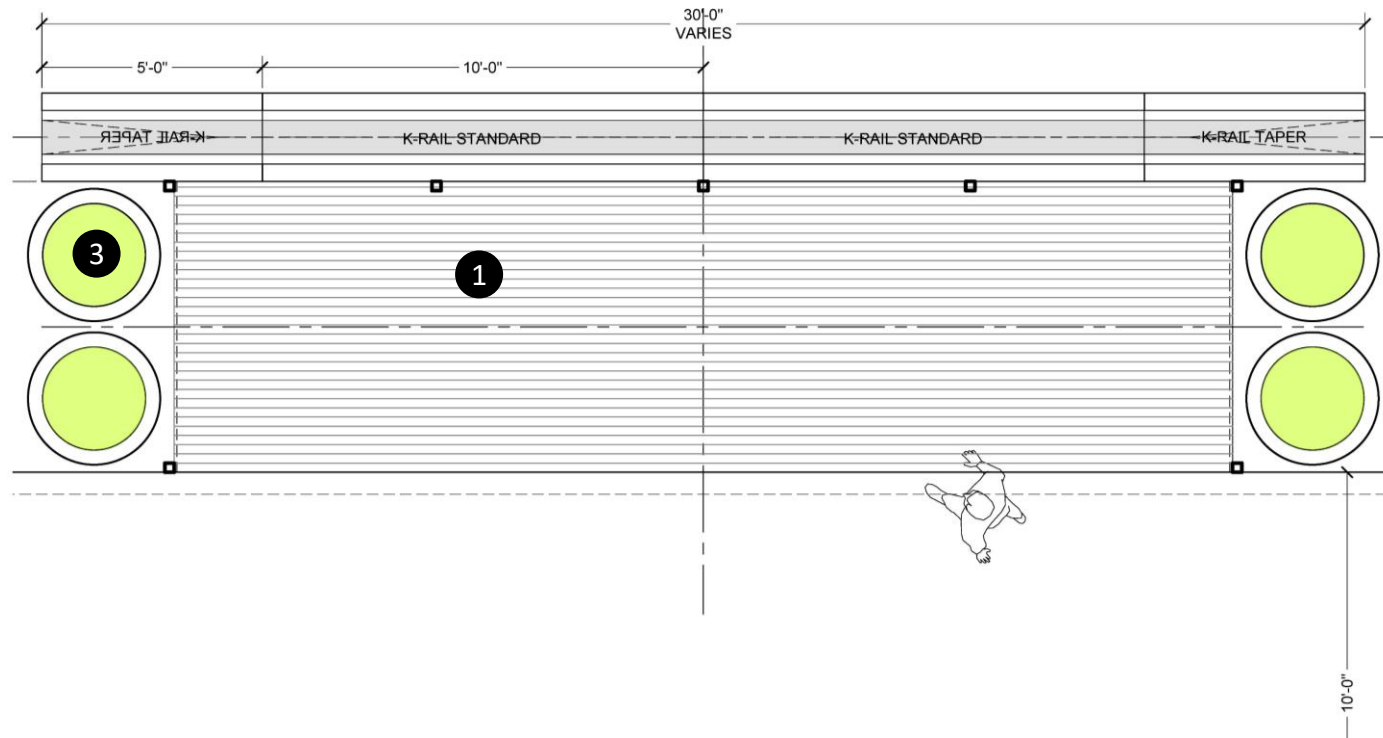
Custom - Components

- 1 Protective Edge
- 2 Raised Flooring
- 3 Canopy and Shading
- 4 Architectural Styling and Materials
- 5 Planting
- 6 Furniture
- 7 Lighting
- 8 Signage, Art, Branding



Demonstration Parklet Custom - Components

- 1 Raised Flooring
- 2 Clad K-rail Edge
- 3 Protective Pots
- 4 Shade Canopy

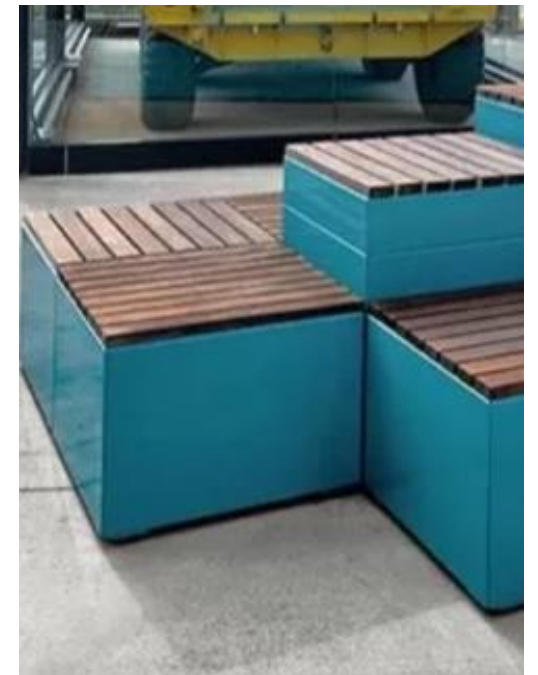


Demonstration Parklet

Custom - Wall Cladding

Parklet Edge Materials. Maintain a consistent parklet design vocabulary between different parklets through a shared family of materials and applications. Use an understated palette of materials to create a clean, contemporary look for the parklets.

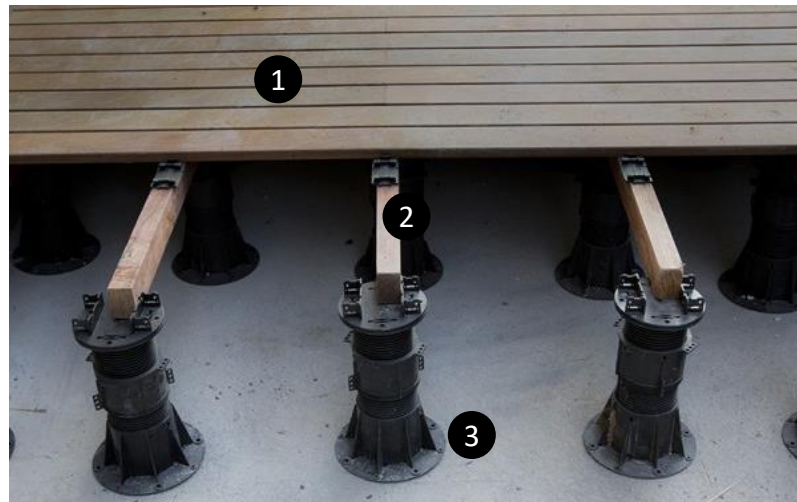
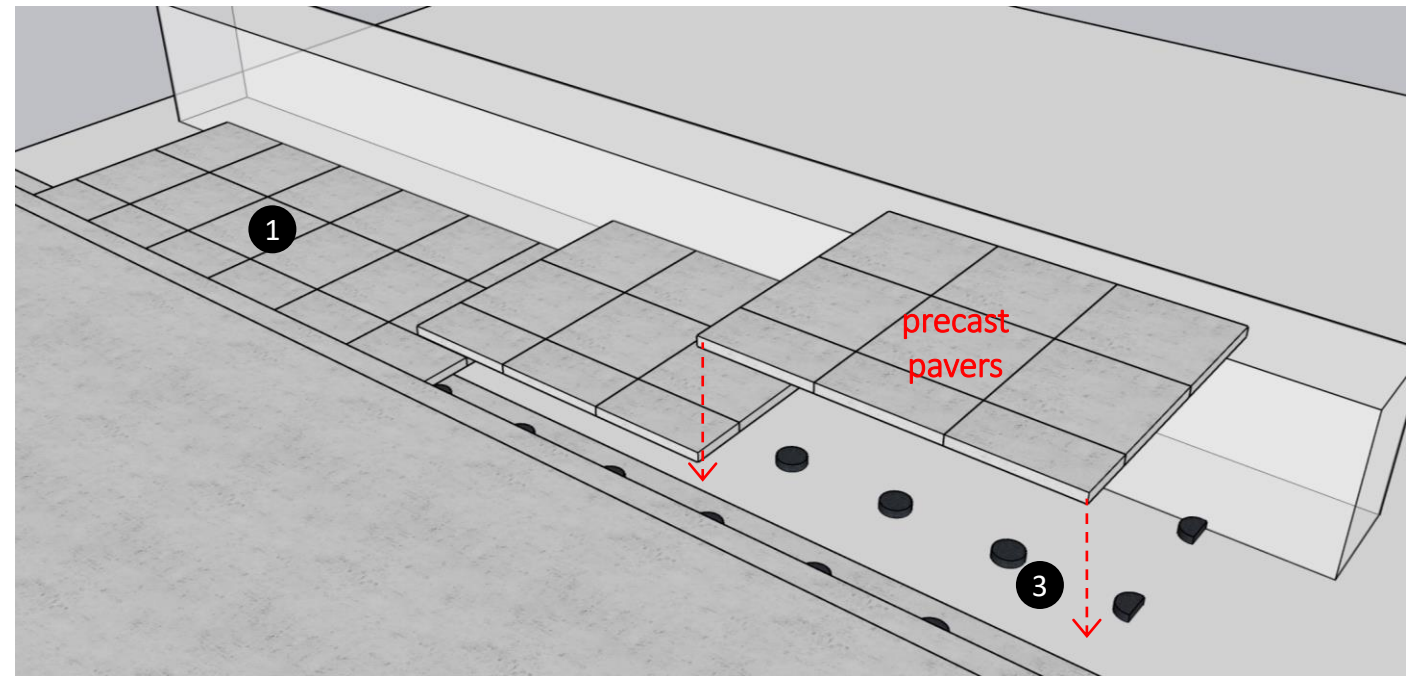
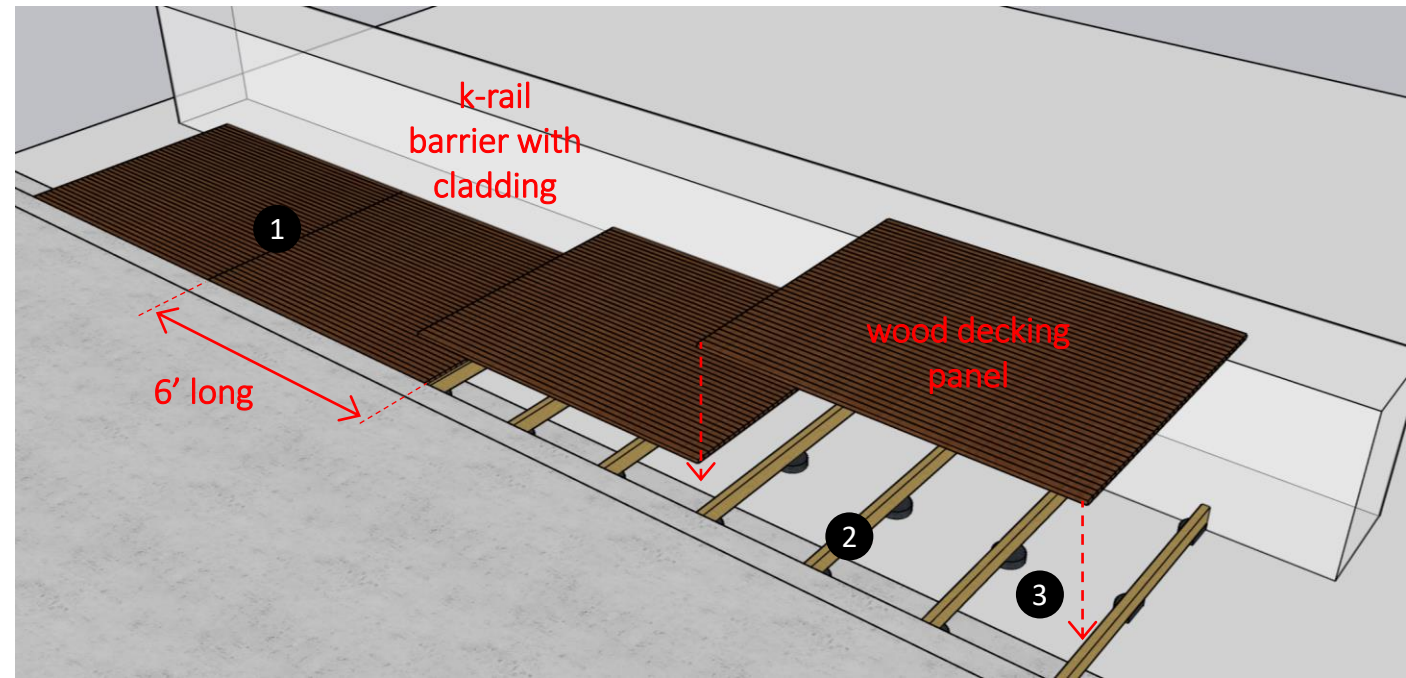
- 1 Wood Cladding: recess fixing hardware, create clean, organized joint lines.
- 2 Aluminum Panels: organize jointing to work with wood cladding joining, use muted color ranges to match other district elements and colors.



Demonstration Parklet

Custom - Flooring

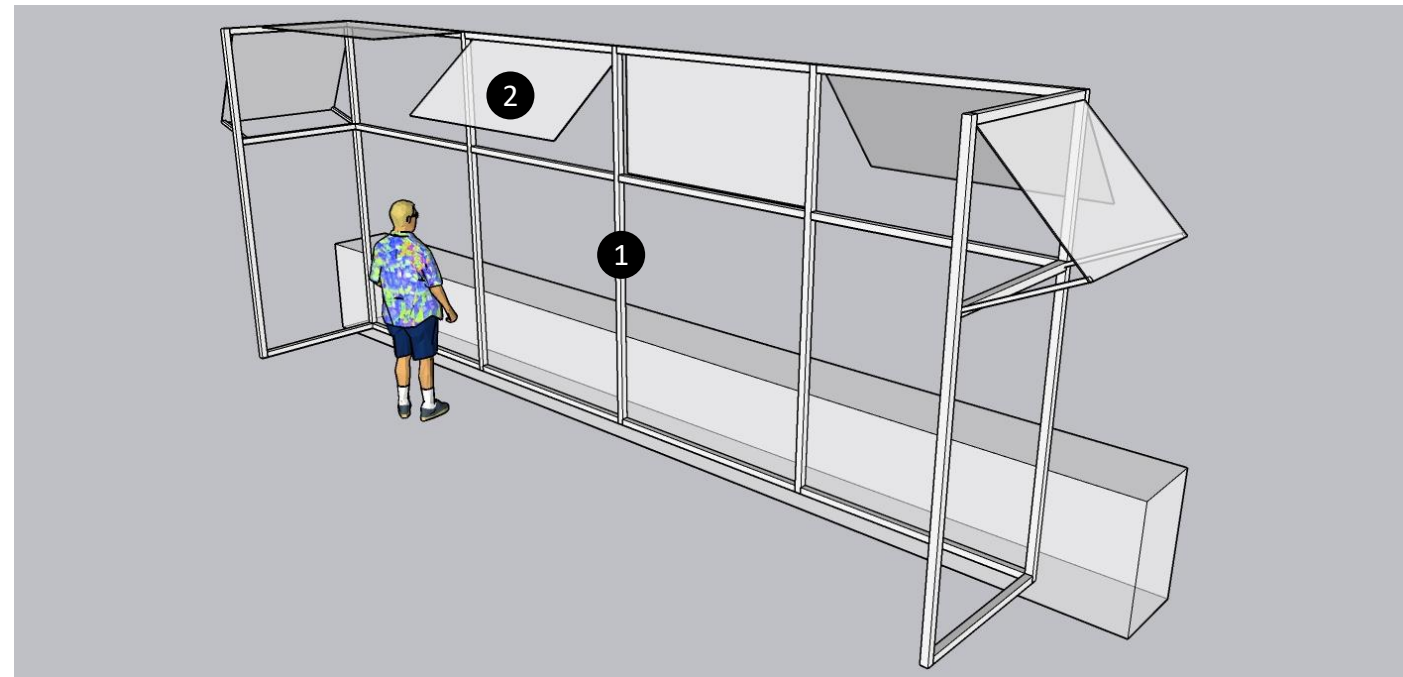
- 1 Finished Flooring: wood decking fixed to joists below or precast unit pavers set directly on pedestals
- 2 Floor Joists: treated lumber, standard size members, support wood decking above
- 3 Leveling Feet: slope/height adjusting plastic pedestals to support a variety of surface types.



Demonstration Parklet

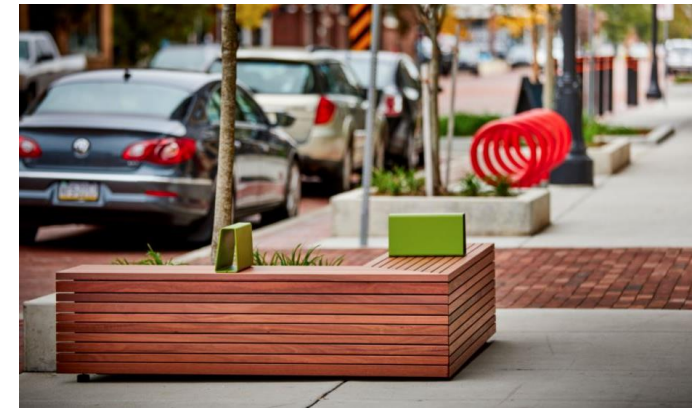
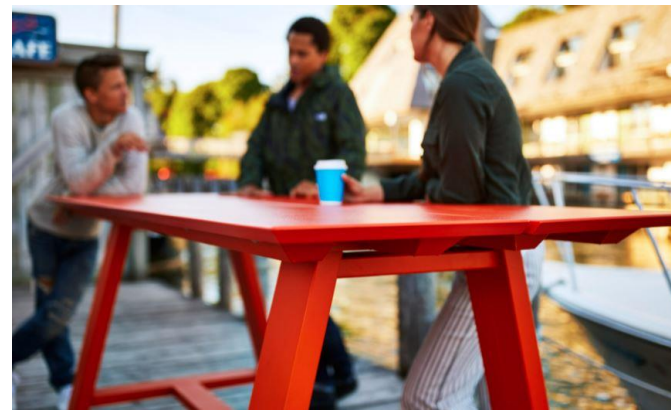
Custom - Canopy

- 1 Canopy Frame: painted wood or metal, joint/connection detailing TBD.
- 2 Adjustable Shade Panels: weighted fabric or thin metal mesh TBD, adjustable by business owners throughout the day to provide max shade with changing solar conditions.



Demonstration Parklet Custom - Furniture

- 1 Seating Elements : Capable of inviting public engagement and interaction with community.
- 2 Bench Elements : Optional configurations to flex with circulation and seating arrangements.
- 3 Planters : Engaging public with warm invitation to green elements with in the parklet environment.



Demonstration Parklet

Estimated Costs - Vestre

Lane Tape			\$ 20,000	
Vestre Purchase	<i>Units</i>	<i>Unit Cost</i>	<i>Total</i>	
Basic Parklet (Floor and Edges)	1		\$ 17,909	Per quote
Combo 1	1		\$ 33,650	Per quote
Combo 2	1		\$ 30,961	Per quote
Combo 3	1		\$ 30,009	Per quote
	4		\$ 112,530	
Other Purchases	<i>Units</i>	<i>Unit Cost</i>	<i>Total</i>	
K-Rail - Full	8	2,500	\$ 20,000	Assume 2 full K-Rails per parklet, purchased & installed
K-Rail - Taper	8	1,250	\$ 10,000	Assume 2 taper K-Rails per parklet, purchased & installed
Planters with Demonstration Trees (for parklets)	16	2,300	\$ 36,800	Assume 4 planters/trees per parklet
Planters with Demonstration Trees (outside parklets)	24	2,300	\$ 55,200	Original estimate of 100 total greening locations
Contingency (10%)			\$ 25,453	
Grand Total			\$ 279,983	

Demonstration Parklet

Estimated Costs - Custom

Lane Tape			\$ 20,000	
Custom Parklet	<i>Units</i>	<i>Unit Cost</i>	<i>Total</i>	
Custom Parklet without Canopy	1	11,040	\$ 11,040	Assumes \$80 psf for 138 sf parklet. Based on bids of \$105-135 psf for Pasadena Playhouse Village parklets.
Custom Parklet with Canopy	3	20,700	\$ 62,100	
Custom Parklet - Furniture	4	7,213	\$ 28,852	Assume similar layouts as Vestre, cost 20% less
	4		\$ 101,992	
Other Purchases	<i>Units</i>	<i>Unit Cost</i>	<i>Total</i>	
K-Rail - Full	8	2,500	\$ 20,000	Assume 2 full K-Rails per parklet, purchased & installed
K-Rail - Taper	8	1,250	\$ 10,000	Assume 2 taper K-Rails per parklet, purchased & installed
Planters with Demonstration Trees (for parklets)	16	2,300	\$ 36,800	Assume 4 planters/trees per parklet
Planters with Demonstration Trees (outside parklets)	24	2,300	\$ 55,200	Original estimate of 100 potential greening locations
Contingency (20%)			\$ 42,798	
Grand Total			\$ 286,790	

Further Demonstration Implementation

- Full design process recommended to establish full family of parklets that express a unique and appropriate style for South Pasadena
- Parklets funded in variety of ways
- Costs may be shared with or borne completely by businesses
- Guidelines documents establish parameters for use, permitting and customization of parklets

City	Funding Source	Business Responsibilities	Consistency/Flexibility	Expiration
Glendora	City (Measure M Local Return)	Furniture, maintenance	Uniform prefabricated design	Semi-permanent
Glendale	City (Local COVID Relief Funds)	Shade canopies, annual fees	Uniform, custom design	Semi-permanent
Pasadena (Playhouse Village)	Business Improvement District	Furniture	Uniform, custom design	Semi-permanent, removed for Rose Parade
San Diego	Business	Businesses design and construct	Custom designs by each business	Permanent
Laguna Beach	Business	Annual fees charged for use	Uniform prefabricated design	2023
Orange	Business	Businesses construct parklet	Consistent, custom design with flexible elements	Permanent, but require removal for events

thank you!