



Additional Documents Distributed for the Regular City Council Meeting March 7, 2018

Item No.	Agenda Item Description	Distributor	Document
3	Presentation by City of Ontario Mayor Paul Leon on a Status Report on the Metro Gold Line Foothill Extension Construction Authority	Paul Leon, Mayor City of Ontario	PowerPoint, Foothill Gold Line Project Update
5	Councilmember Communications	Michael A. Cacciotti, Councilmember	PowerPoint, Various Photos
5	Councilmembers Communications	Robert S. Joe, Councilmember	PowerPoint, 1) Senior Luncheon for Chinese New Year Celebration; 2) Arroyo Vista Elementary' s Reading Across America
5	Councilmembers Communications	Richard D. Schneider, M.D. Mayor	PowerPoint, 1) Pocket Parks Community Meeting; 2) Housing Rights Center Workshop; 3) "We Will Be Going In" PD/Fire/SPUSD Event; 4) Memorial Service for DCohen; 5) Affordable Housing Study Session; 6) MKhubesrian 41 st Assembly District Woman of the Year
PC	Public Comment	Cub Scout Pack 7	PowerPoint, Mural Photo
14	Public Hearing for Adoption of a Resolution Approving the Community Development Block Grant (CDBG) Program for the Fiscal Year 2018-19	Karen Aceves, Management Analyst	PowerPoint, Staff Presentation
15	Authorization of Contract Amendment for the Arroyo Seco Pedestrian and Bicycle Trail Project with Sully-Miller Contracting Company	Rafael Casillas, Acting Public Works Director	PowerPoint, Staff Presentation



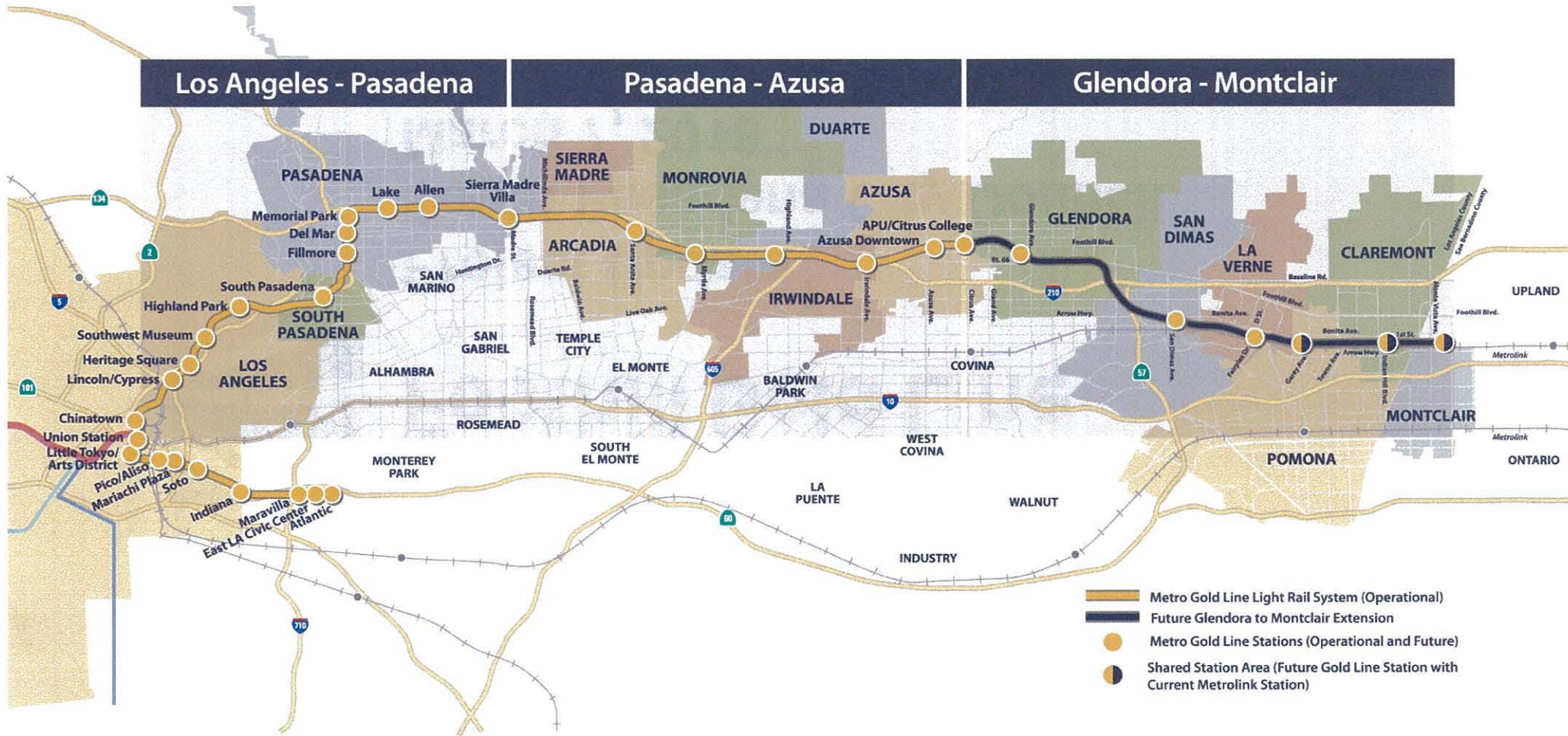
Foothill Gold Line

**Project Update
South Pasadena City Council
March 7, 2018**

PLEON 3

3/7/18

Foothill Gold Line – 2 Phases Complete



Connecting Los Angeles, the San Gabriel Valley & the Inland Empire

December 2, 2017 Groundbreaking



Six News Stations

Glendora



San Dimas



La Verne



Six News Stations

Pomona



Claremont



Montclair



Glendora to Montclair



-  Gold Line Rail Corridor (shared with freight)
-  Metrolink Rail Corridor
-  Gold Line Station
-  Gold Line Station and Metrolink Station (not shared)
-  Planned Grade Separation for Gold Line Trains Only

RFQ C2002 Phase 2B Alignment DB Contract: Shortlist *(alpha order)*

- AECOM | Stacy and Witbeck JV
- Herzog Rados Lane, a Joint Venture
- Kiewit-Parsons, a JV
- San Gabriel Valley Transit Partners (STP),
a Joint Venture of Fluor and Ames



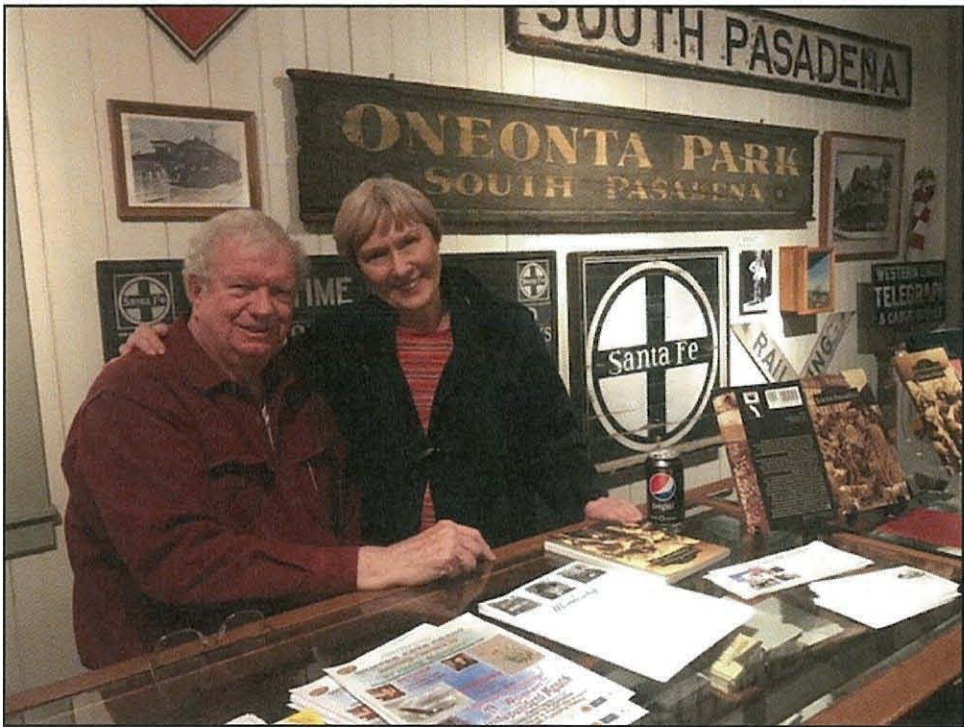
RFP C2002 Phase 2B Alignment DB Contract: Next Steps

Activity	Date
✓ Request for Statements of Qualification	November 8, 2017
✓ Statements of Qualification Received	January 24, 2018
✓ Shortlist of Proposers Posted	February 6, 2018
✓ Board Approval of Shortlist of Proposers	February 14, 2018
✓ Industry Review – Draft RFP Issued	February 15, 2018
Request for Proposals Issued	May 30, 2018
Request for Proposals Received	September 12, 2018
Board Authorizes Award of Contract for DB2	October 24, 2018









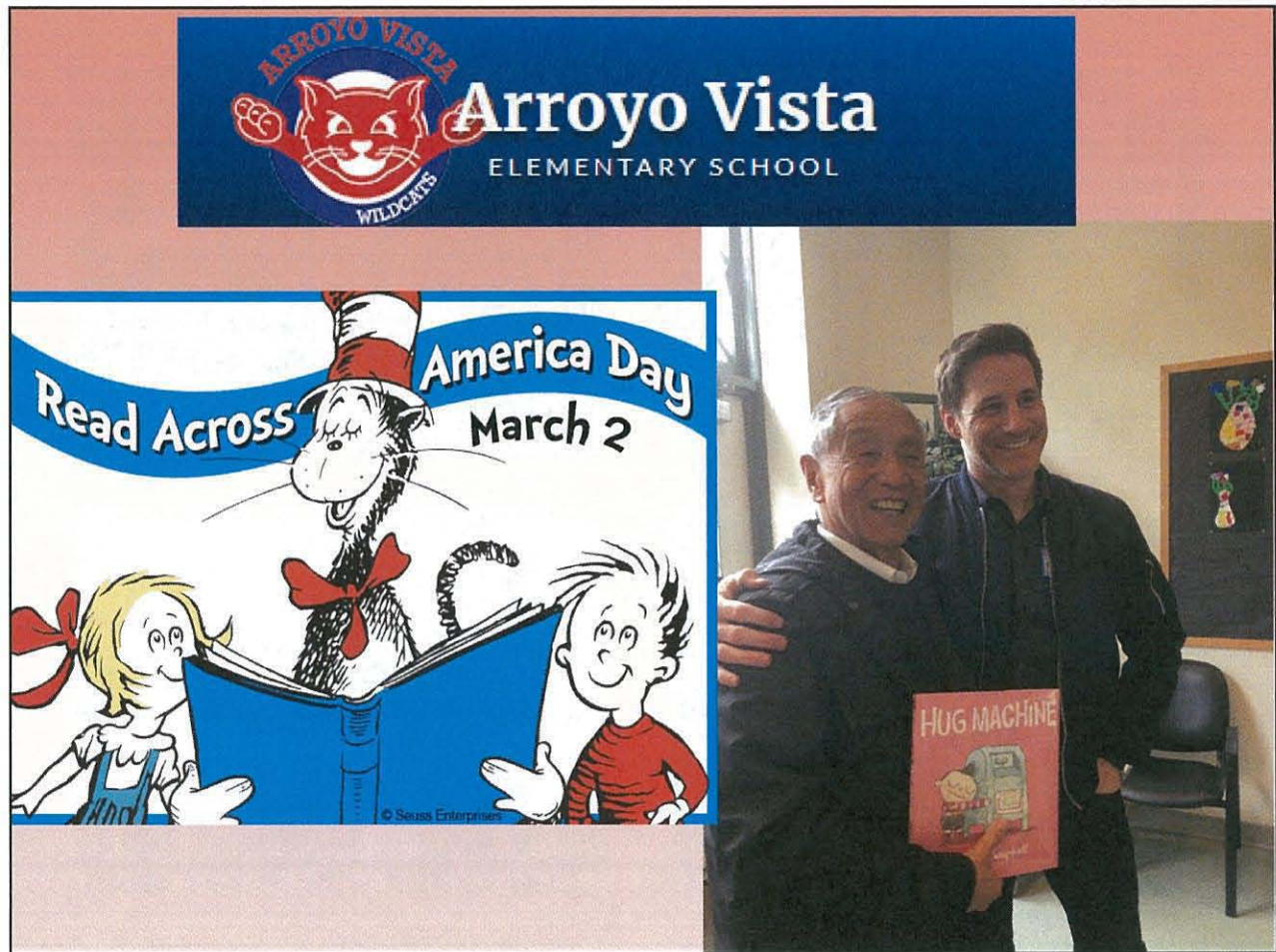


3/7/18 5
Joe 1



Luncheon was served to 175 senior citizens by South Pasadena Chinese American Club and Senior Center volunteers







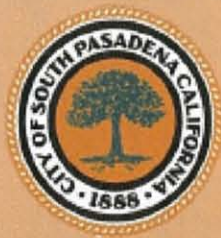
ASSEMBLY MEMBER
Chris Holden
DISTRICT 41



**Our very own Mayor Pro Tem Dr. Marina Khubesrian,
City of South Pasadena, was selected as the
“41st Assembly District Woman of the Year”**



Schneider
Additional Material
AGENDA ITEM # 5
3/7/18 City Council Mtg



South Pasadena Community Meeting Regarding Future Pocket Parks

Monday, March 12th

South Pasadena Senior Center

1102 Oxley St.

6:30 p.m.



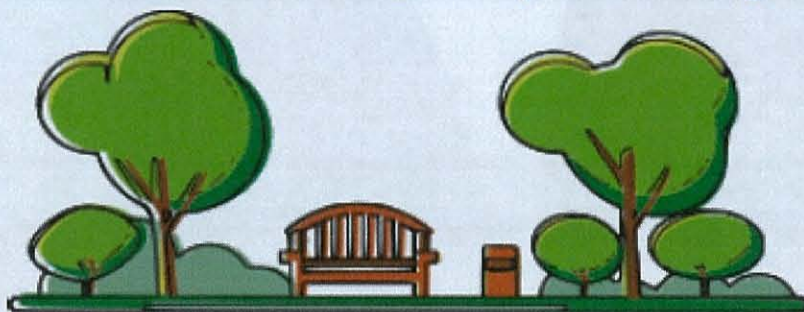
The City is adding two new pocket parks! The Community Services Department and the Parks & Recreation Commission would like to hear from the community. Park designer David Volz from David Volz Design will be sharing conceptual plans for both lots located at:
2006 Berkshire Avenue and 1107 Grevelia Street.

We encourage your attendance and invite you to participate as we value your input.

If you have any questions, please contact

Sheila Pautsch, Community Services Director, at: (626) 403-7362 or

SPautsch@southpasadenaca.gov



**Parks
Make
Life
Better!**



HOUSING RIGHTS CENTER

WORKING FOR JUSTICE AND EQUALITY IN HOUSING

FREE WORKSHOP

Tuesday, March 13, 2018,
from 5:00 - 7:00 p.m.

Library Community Room
1115 El Centro Street, South Pasadena

Topics will include rent increases,
discrimination, evictions, landlord-tenants rights
and responsibilities, and much more!

For more information or to RSVP,
please call Shannon at (800) 477-5977 ext. 1103.



Join the South Pasadena Police and the South Pasadena Fire Departments in an Important Emergency Preparedness Discussion:

“We Will Be Going In!”

Learn how South Pasadena Police Officers and Firefighters will immediately respond in the critical incident of an active shooter in our community



Arthur Miller, Police Chief, will lead a formal discussion on our Police Department's extensive training in preparation for an active shooter event and what residents will expect from our Police Officers and Emergency Dispatchers if calls are placed to 9-1-1 in such a situation.

Paul Riddle, Fire Chief, will discuss the Fire Department's extensive training in this specific area and, with Chief Miller, co-facilitate a Question & Answer Session with The Public.

Geoff Yantz, Ed.D., Superintendent of Schools, SPUSD, will also participate in this important forum.

Where: City of South Pasadena Library Community Room
When: Wednesday, March 14, from 7 PM to 9 PM

Police Officers and Firefighters will be in attendance. This community event is open to the public. Refreshments will be served.

For more information, visit our webpage at: www.southpasadenaca.gov

For additional questions, please contact the South Pasadena Police Department:
Acting Captain Robert Bartl at 626-403-7276 or RBartl@southpasadenaca.gov
Captain Mike Neff at 626-403-7292 or MNeff@southpasadenaca.gov



Memorial Service for Dorothy M. Cohen, Former Mayor and Co-Founder of the Friends of the Library Bookstore



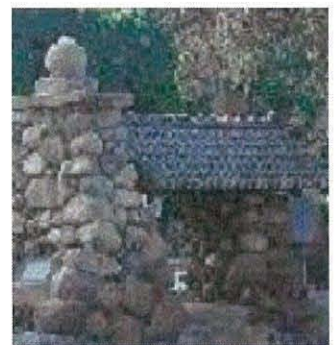
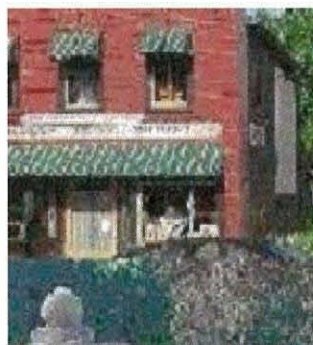
The memorial service will be held on Saturday, March 17, 2018, at 4:00 p.m., in the South Pasadena Public Library Community Room. For more information about Dorothy's life and legacy, visit the Library's website.



Affordable Housing Study Session

Wednesday, March 21, 2018

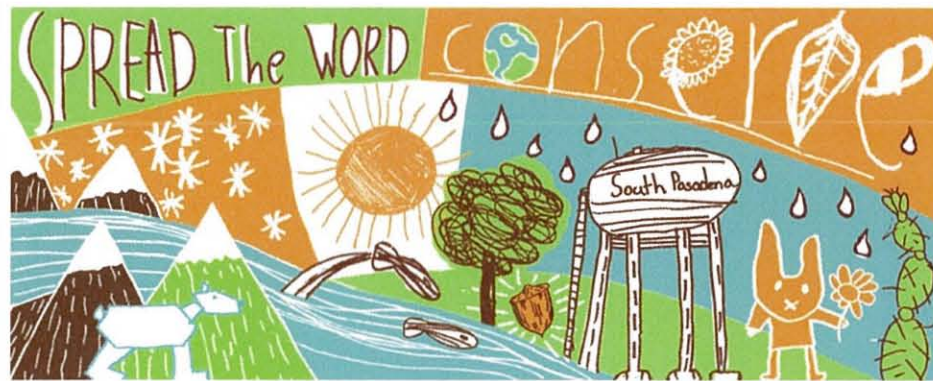
The City Council and community have expressed interest in increasing affordable housing in our City. As a result, a presentation on the subject of inclusionary housing ordinances and linkage fees will be provided at the March 21, 2018 City Council Meeting, at 7:30 p.m., in the Amedee O. “Dick” Richards Jr. Council Chamber. The presentation is intended to create an informative working discussion.



Cub Scout Pack 7



Cub Scout Pack 7



Parks and Recreation Commission picked this mural to display at the Demonstration Garden at their February Meeting



COMMUNITY DEVELOPMENT BLOCK GRANT FY 2018-19

MARCH 7, 2017

City of South Pasadena

Senior Meal Program

2015-16

8,164 On site
5,278 Delivered
13,442 Total lunches served
CDBG Funds \$18,220

2016-17

8,752 On site
5,899 Delivered
14,651 Total lunches served
CDBG funds \$18,337

2017-18 (July – December)

4,883 On site
3,757 Delivered
8,640 Total lunch served
CDBG funds \$17,970



3/7/18

A

ADA Access Ramps and Sidewalk Replacement Program

• FISCAL YEAR	S.W./S.F.	RAMPS	PROJECT
• 2015-16	6,711	0 EA.	\$ 61,688
• 2016-17	11,923	9 EA.	\$ 112,885
• 2017-18	11,122	10 EA.	\$ 137,547



Q & A





ARROYO SECO TRAIL PROJECT UPDATE

MARCH 7, 2018

City of South Pasadena



Arroyo Seco Pedestrian and Bicycle Trail Project Update

- 90% complete and under budget.
- Prior to the start of construction
 - Value engineering
 - Optimize the use of available grant funding for Project delivery.
- Project change orders for unforeseen conditions.
- Prior to final acceptance of the Project,
 - Staff requires authorization and direction from City Council to negotiate a Contract Amendment for Project change orders.





Project Budget

- Funding Sources

- General Fund
- Proposition C
- Transportation Development Act (TDA)
- Mobile Source Air Pollution Reduction Review Committee (MSRC)
- Assembly Bill 2766 Subvention Match (AB2766)
- Santa Monica Mountains Conservancy (SMMC)
- Los Angeles County Parks (LACP)
- State Transportation Program Local (STPL)

- The combined total project budget is \$2,472,122
- The current total project cost is \$1,624,213
- The anticipated fund balance is \$520,000 to \$848,000





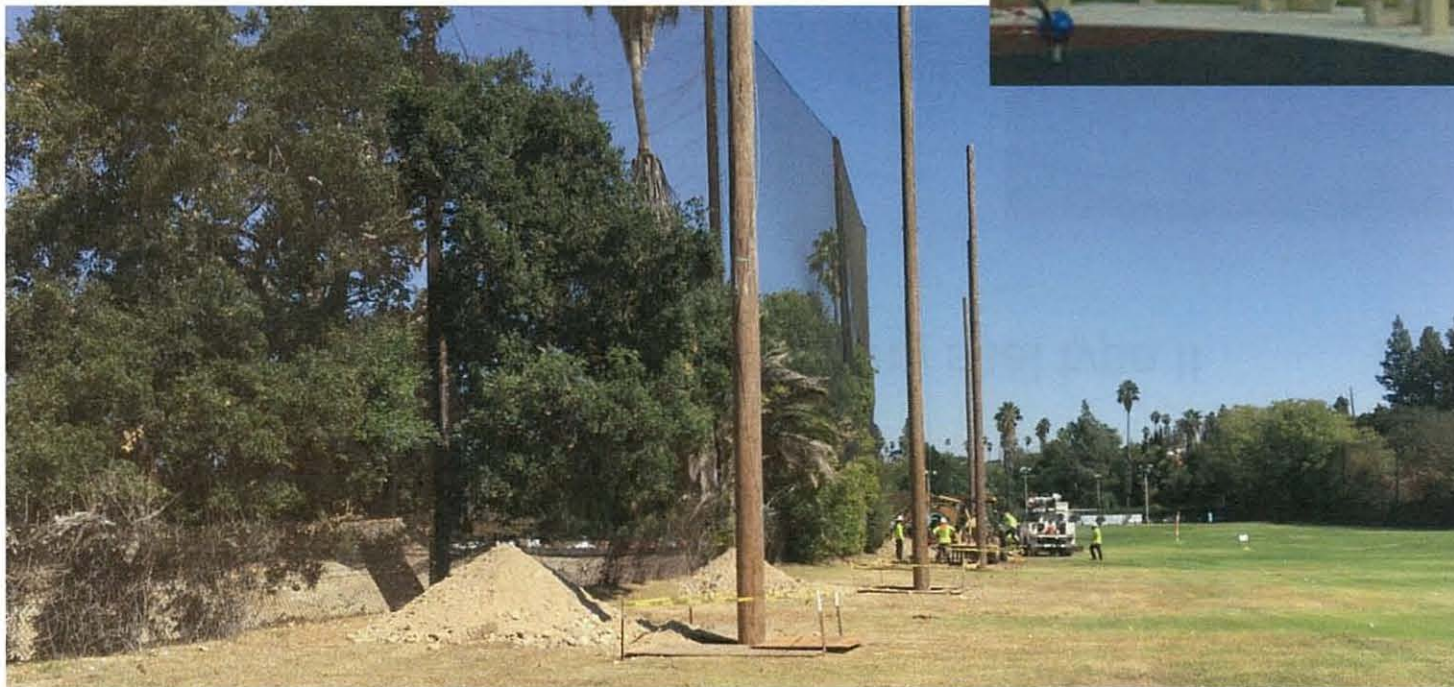
Unforeseen Existing Field Conditions

- Safety trellis for pedestrians and bicyclists from being struck by driving range golf balls
- Pothole and pavement repairs to the parking lots
- Grading adjustments required the retaining walls to be increased.
- Unmarked buried concrete foundations were required to be removed.
- Drainage modifications were made to maintain positive flow.
- Soil export from golf course driving range post holes.
- Electrical modifications to tennis court lighting system.
- New water service for tennis court business.
- Optional concrete trail placement parallel to the driving range, unauthorized.



Driving Range Netting / Trellis

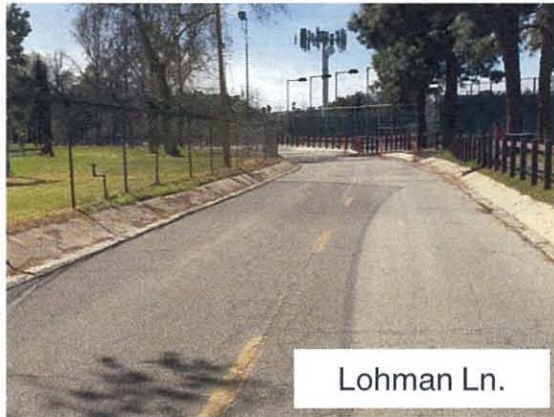
- Safety concerns
- 720 lineal feet of driving range netting
- Ball trajectory study
- Solicit proposal for safety trellis





Parking Lot Improvements

- Pot hole repairs, crack seal and slurry seal type II
- Additive alternates





Recommendation

- Authorize the City Manager to direct staff to value engineer and negotiate a Contract Amendment and execute change orders to utilize the Project fund balance of \$847,912.24 and not to exceed the total project budget of \$2,472,121.55.
- Finalize construction of the Project per the original scope of work and authorize staff to solicit proposals for the construction of the safety trellis for trail patrons and parking lot improvements in the future. This option will require the Trail to remain closed until appropriate safety measures are installed.



Q & A





Ball Trajectory Study

BALL TRAJECTORY STUDY "B"

DESIGN TRAJECTORY

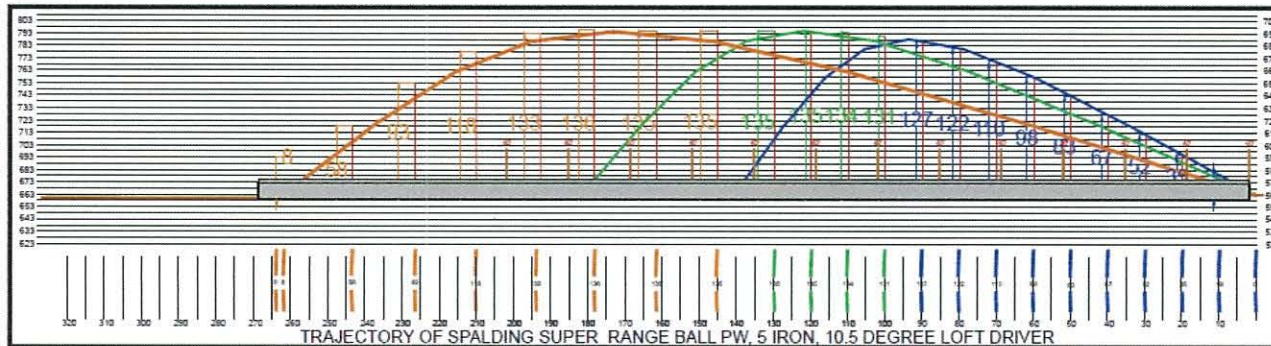
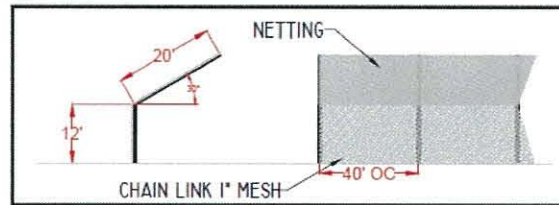
The USGA tests golf equipment to determine if it conforms to certain specifications relating to the speed with which golf ball leaves the face of a driver. Their testing equipment uses a clubhead speed of 100 MPH. While it is possible for a person to swing with faster speeds (Tiger Woods driver swing speed has been measured 130+ MPH) We selected a swing speed of 112 MPH for the driver in an effort to model a swing by a stronger or more proficient guest.

For the purpose of this study, this illustration prepared by Tanner Consulting Group depicts the path of a Spalding Super Range Ball hit with a 10.5 degree lofted driver, a swing speed of 112 MPH. Additionally, it assumes the ball was struck in the middle of the clubface that was square to a correct alignment at impact. There is no guarantee that a guest will be proficient enough to mimic the exact swing conditions to generate this ideal result. Furthermore, if a golf ball is struck with any less power and/or accuracy than modeled above, then the flight will not be nearly as straight or as far as shown.

Legend

Golf Club Driver: Taylor Made Rocketballz 10.5 deg. Superfast Matrix
Ozik Xcon Graphite Shaft 45" long.

Golf Ball: Spalding Super Range Ball



Golf Ball Type: SPALDING SUPER RANGE BALL
Golf Club: FITCHING WEDGE
Loft: 45 DEGREE
Swing Speed: 83 MPH
Wind Speed: 0mi
Tee Height: .75' - .92'
Direction of Flight: 0
Altitude: 563'

Golf Club: 5 IRON
Loft: 28 DEGREE
Swing Speed: 94 MPH
Wind Speed: 0mi
Tee Height: .75' - .92'
Direction of Flight: 0
Altitude: 563'

Golf Club: DRIVER
Loft: 10.5 DEGREE
Swing Speed: 112 MPH
Wind Speed: 0mi
Tee Height: .75' - .92'
Direction of Flight: 0
Altitude: 563'

DISTANCE HIT BY A SPECIFIC CLUB, BALL AND SWING SPEED. THESE ARE GOLF SHOTS THAT ARE HIT STRAIGHT AND CORRECT. THERE IS NO GUARANTY THAT A GOLFER WILL HIT AT THIS SAME SPEED OR ANGLE. IF A GOLF SHOT IS MIS-HIT IT WILL USUALLY NOT TRAVEL

BE "A WORSE CASE SCENARIO." THE GOLF CLUB WAS SELECTED BY POPULARITY.

TANNER
CONSULTING GROUP
Vallejo, Sonoma, CA 94927
903 Searsville Ct.
Ph: (707) 772-2233 Fax: (707) 772-2230
www.tannerconsulting.com

BALL TRAJECTORY STUDY "B"

ARROYO SECO GOLF COURSE
DRIVING RANGE
1055 LOHMAN LANE
PASADENA, CALIFORNIA

DATE: FEBRUARY 16, 2016
SCALE: 1/4" = 10'
SHEET NAME: N-4b



Project Funding

Fund Source	Allocated	Total Available	Total Remaining
Park Impact Fee	\$ 93,486.69	\$ 100,000.00	\$ 6,513.31
STPL Exchange	\$ 102,000.00	\$ 380,000.00	\$ 278,000.00
Prop C Total	\$ 487,064.12	\$ 500,000.00	\$ 12,935.88
GF	\$ 267,243.92	\$ 347,404.00	\$ 80,160.08
GF AB2766 MATCH	\$ 89,996.58	\$ 90,000.00	\$ 3.42
MSRC DISC	\$ 132,523.64	\$ 142,096.00	\$ 9,572.36
AB2766 SUBVENT MATCH	\$ 45,363.36	\$ 52,000.00	\$ 6,636.64
SMMC	\$ 366,392.47	\$ 410,000.00	\$ 43,607.53
TDA	\$ -	\$ 17,000.00	\$ 17,000.00
LACP	\$ 249,393.27	\$ 250,000.00	\$ 606.73
GF LACP MATCH	\$ 62,169.29	\$ 62,500.00	\$ 330.71
Total	\$ 1,895,633.34	\$ 2,351,000.00	\$ 455,366.66