



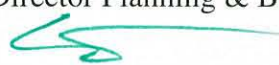


City Council Agenda Report

ITEM NO. 20

DATE: December 5, 2018

FROM: Stephanie DeWolfe, City Manager 

PREPARED BY: David Bergman, AICP, Interim Director Planning & Building 
Edwar Sissi, Associate Planner 

SUBJECT: **Public Hearing to Consider the Designation of the Library Tree located in the Library Park as a City Landmark, Number 55, Planning Project Number 2155-LHD**

Recommendation Action

It is recommended that the City Council designate the Moreton Bay Fig Tree, known as the Library Tree, located in the Library Park as a City Landmark, number 55 in accordance to the required findings as outlined in the City's Cultural Heritage Ordinance, Section 2.63(A). Staff analysis has determined that the Historic Resource meets the required findings which are as follows: (a) That the designation of Landmark or Historic District is consistent with one or more of the purposes set forth in Section 2.58B; and (b) That the Landmark or Historic District meets one or more of the criteria for designation listed in Section 2.63(B); and (c) That the Landmark or Historic District possesses Historic Integrity of Location, design, setting, materials, workmanship, feeling, or association.

Commission Review and Recommendation

This matter was reviewed by the Cultural Heritage Commission (CHC) at their regularly scheduled meeting on September 20, 2018. The CHC has made a unanimous recommendation that the City Council designate the Library Tree as a South Pasadena Landmark.

Executive Summary

The large Moreton Bay Fig Tree, known as the Library Tree was planted in 1930 by South Pasadena City Streets Department employee, Willem Kloezeman. 1930 is also the year that the City's Historic Library was enlarged, remodeled, and moved to its current centralized location within the Library Park. The tree and the Library have remained in their respective locations since that time. The CHC and Staff are recommending approval of the Landmark Designation. In accordance to the City's Cultural Heritage Ordinance, the City Council set a date certain for the public hearing on the proposed Designation of the Library tree to the regularly scheduled City Council meeting on December 5, 2018.

Community Outreach

Opportunity for public comment was provided at the CHC meeting; a letter of support is on file and attached to this report. The public hearing on December 5, 2018 will provide additional opportunity for public comment on matters pertaining to the proposed Landmark Designation of the Library Tree. The public hearing of December 5, 2018 was also publicly noticed in accordance to the requirements of the City's Cultural Heritage Ordinance as a method of community outreach and to encourage public comment.

Discussion/Analysis

In accordance to the City's Cultural Heritage Ordinance, Chapter 2.58 of the South Pasadena Municipal Code (SPMC), the CHC considered a recommendation by the established Landmark Subcommittee regarding the nomination of a new City Landmark. In support of the Subcommittee's findings, the CHC has made a unanimous vote of Recommendation to the City Council for the landmarking of the South Pasadena Library Park's Moreton Bay Fig Tree, known as the Library Tree.

Designation Criteria for Landmark Status:

In concurrence with Staff's analysis, the Landmark Subcommittee has determined that the Library Tree meets the criteria required for Landmark Designation as outlined in SPMC Section 2.63(B). The Landmark Subcommittee identified that criteria numbers 1, and 9 are applicable to the eligibility of the Library Tree as a City Landmark. The identified criteria are listed as follows:

1. Its character, interest or value as a part of the heritage of the community.

The Library Tree is representative of two particular heritage characteristics the City of South Pasadena is known for: its historic environmental context, and its motto of the "City of Trees." The Library Tree is evocative of the ethos of South Pasadena with its civic pride in preservation of historic artifacts be they natural resources or structures, and its civic pride in tree preservation and urban forestry. The Library Tree is not only historic in age, being planted nearly 90 years ago, but it is also deeply connected to the Historic City Library and its relocation within the Historic Library Park. The Library Tree has been known by countless generations of residents and visitors as a prominent focal point and natural resource within the City.

9. Its unique location or singular physical characteristic representing a familiar visual feature of a neighborhood.

The Library Tree is literally rooted with the history of the City's Historic Library building and Library Park. The Library Tree was planted in 1930, the same year the Library was renovated, expanded, and relocated to its centralized location within the park where both tree and Library remain today. Over the decades, the Library Tree has grown into its current grand size as a fine specimen of the *Ficus macrophylla* within Southern California. Due to its size and significance, for decades the Tree has served as a local visual landmark, and a welcoming respite of shade, fun, and wonder for both young and old, and for both visitors and residents.

Required Findings per Section 2.63(A):

The Landmark Subcommittee of the CHC has concurred with Staff's analysis on the required findings to support the designation pursuant to SPMC Section 2.63(A). The required findings provided written findings of support for the designation pursuant to SPMC Section 2.63(A). The Findings are as follows:

a. That the designation of Landmark or Historic District is consistent with one or more of the purposes set forth in Section 2.58B; and

The Subcommittee has established that the designation of the Library Tree meets the purpose of the Ordinance in establishing and preserving a Sense of Place as listed under Section 2.58B(A)(1). The Subcommittee finds that the Library Tree provides a sense of place through the preservation of the City's heritage and character. The Library Tree was planted in 1930 by City employee, Willem Kloezevan. At the same time the City Library was moved from its original location to its more centrally-located site that the Library still occupies today. The Library Tree is reflective of this moment in time of the City Library relocation and establishment of the surrounding park and therefore serves as a significant living and tangible reminder of the City's social, educational, cultural and architectural history as it has a timely relationship with the City Library, which is also a City Landmark, number 10. Therefore this finding can be made.

b. That the Landmark or Historic District meets one or more of the criteria for designation listed in Section 2.63(B); and

The Subcommittee has determined that the Library Tree meets Criteria (1) and (9) under subsection (B). Criteria (1) indicates that the Landmark is notable for "Its Character, interest, or value as a part of the heritage of the Community." The Library Tree serves as a living and tangible natural historic resource that provides a direct linkage to the development of the Library Park that exists today beginning in 1930 when the Library Tree was planted and the City Library was moved to its current location. Criteria (9) indicates the Landmark is notable for "its unique location or singular physical characteristic representing an established and familiar visual feature of the neighborhood." The Library Tree is uniquely located given its prominent location in the City's Historic Library Park and planted next to City Landmark Number 10, the City Library. The Library Tree provides a living linkage to the City's history, and affords the community a readily accessible Historic artifact. Therefore, this finding can be made.

c. That the Landmark or Historic District possesses Historic Integrity of Location, design, setting, materials, workmanship, feeling, or association.

The Library tree was planted in 1930, coinciding with the relocation of the City's Historic Library where both building and tree remain today. The Library Tree is unique given its prominent location, and its historic association to a listed Historic Resource, the City Library. Additionally, the Library Tree is unique to the City given its maturity, its size, and its articulated natural features such as its ribbed network of surface roots, its sweeping canopy that has provided shade to generations of the community, and its multi-stemmed and graceful trunk. Therefore, this finding can be made.

Alternatives Considered

1. The City Council may deny the Landmark Designation of the Library Tree.
2. The City Council may remand the item back to the Cultural Heritage Commission for further study.
3. The City Council may continue the public hearing of the Landmark Designation to a date certain.

Next Steps

1. Upon a vote by the Council to approve the Designation of the Library Tree as City Landmark Number 55, the City shall record the City Council Resolution of the Landmark Designation with the County Recorder's Office.
2. Staff will formalize the approval of Designation by written notice to the Library Director and the City Manager.

Background

The Library Tree was originally planted in 1930 by South Pasadena City Streets Department employee, and fellow City resident, Willem Kloezeman. Mr. Kloezeman worked for the City in various departments for over 45 years from 1926 until he retired in 1972. During his tenure with the City, Mr. Kloezeman worked in the City Streets Department through the 1930s and planted trees throughout the City, many of which are still standing. Mr. Kloezeman also worked in the Fire Department from the 1940s and then transitioned into the Water Department in the 1950s where he retired in 1972 as the Water Service Foreman.

Anecdotal evidence points to the Library Tree, a Moreton Bay Fig Tree (*Ficus macrophylla*) as being a young sapling about 6 inches in diameter at the time of planting in 1930. The planting of the tree also coincided with the remodel, enlargement, and relocation of the City's Historic Library within the Library Park where both tree and building remain today.

The Library Tree is widely known by multiple generations of residents and visitors. The Library Tree provides a living linkage to the City's history, and affords the community a readily accessible Historic Resource.

As a "City of Trees," designating trees as Historic Resources, or Landmarks, is not uncharacteristic for the City. There are currently four trees identified on the City's Landmark listing. The designation of the Library Tree complies with the Cultural Heritage Ordinance, Section 2.63(A) in which natural features and sites are included as eligible for Landmark listing. Several other municipalities have magnificent specimens of Moreton Bay Fig trees as local landmarks including San Diego, Santa Barbara, Ventura, Oceanside, and Los Angeles.

Legal Review

The City Attorney has reviewed this item.

Fiscal Impact

The Library Tree is City-owned and located within the City's Historic Library Park. The City will not incur additional maintenance costs associated with maintaining its urban forest through the designation of the Library Tree as a Historic Landmark.

Environmental Analysis

This item is exempt from any California Environmental Quality Act (CEQA) analysis based on State CEQA Guidelines Section 15308, Class 8, Actions taken by regulatory agencies, as authorized by state or local ordinance, to assure the maintenance, restoration, enhancement, or protection of the environment where the regulatory process involves procedures for protection of the environment.

Public Notification of Agenda Item

The public was made aware that this item was to be considered this evening by virtue of its inclusion on the legally publicly noticed agenda, posting of the same agenda and reports on the City's website and/or notice in the *South Pasadena Review* and/or the *Pasadena Star-News* and to all properties within a 300 foot radius of the Library Park.

The public hearing of the September 20, 2018 CHC meeting, was duly noticed in accordance to the requirements of the City's Cultural Heritage Ordinance. As a City-driven project, a formal notification memo was sent to the City Manager, and the Library Director. The City also mailed individual property notices to all properties within a 300 foot radius of the Library Park in which the Library Tree is located. Additionally, the recommendation of the designation of the Library Tree was duly noticed in the *South Pasadena Review* on September 7, 2018.

The noticing of this public Hearing for the Designation of the Landmark by City Council was duly noticed as required by the City's Cultural Heritage Ordinance including 300 foot property radius mailings, a newspaper publication, and certified letters to the owners and applicant.

Attachments:

1. Resolution, Designating the Library Tree as City Landmark Number 55.
2. Resolution No. 7583 Setting the Date Certain for the Designation of the Landmark.
3. CHC Letter of Notice to City Council on Decision for Recommendation of Designation.
4. CHC Landmark Subcommittee Report and Findings.
5. Staff Memorandum to CHC Compiling the Findings of the CHC Landmark Subcommittee.
6. South Pasadena Review Newspaper Article on the Library Tree (Dated: March 6, 2018).
7. Library Park Tree Inventory and Excerpts from Dr. Matt Ritter's Book: *A Californian's Guide to the Trees Among Us*.
8. Letter of Support.
9. Proof of Public Notification of Public Hearing Designation, *South Pasadena Review*.
10. Listing of South Pasadena Landmarks.
11. Historic Aerials and Photographs of the Library Tree.

ATTACHMENT 1
Resolution Designating the Library Tree as City
Landmark Number 55

RESOLUTION NO. XXXX**A RESOLUTION OF THE CITY COUNCIL
OF THE CITY OF SOUTH PASADENA, CALIFORNIA,
DESIGNATING THE MORETON BAY FIG TREE, KNOWN AS
THE LIBRARY TREE LOCATED ADJACENT TO THE CITY
LIBRARY AT 1115 EL CENTRO STREET AS A HISTORIC CITY
LANDMARK (LANDMARK NUMBER 55)**

WHEREAS, Section 2.62 of the South Pasadena Municipal Code, Ordinance No. 2315 (“Cultural Heritage Ordinance”) authorizes the Cultural Heritage Commission (“the Commission”) to recommend to the City Council the designation of appropriate properties as Landmarks; and

WHEREAS, on March 15, 2018, upon the Commission’s own initiative, a Landmark Subcommittee (“Subcommittee”) was formed to begin the recommendation procedures of the Library Tree as a City Landmark; and

WHEREAS, on August 8, 2018, the Subcommittee formalized their findings and notified Staff of their request to carry the Landmark nomination to the full CHC for the Commission’s formal vote on the recommendation to City Council for Designation; and

WHEREAS, on September 20, 2018, the CHC formalized their recommendation to the City Council for designation of the Library Tree as a City Landmark by a unanimous vote of 4-0, with one CHC member absent; and

WHEREAS, on October 4, 2018, the CHC provided notice to the City Council via the City’s Clerk’s office of the Commission’s formal recommendation to have the Library Tree designated as a City Landmark by the City Council of South Pasadena; and

WHEREAS, on October 17, 2018, the City Council of the City of South Pasadena held a duly noticed regularly scheduled meeting to set a date certain for the public hearing of the Landmark Designation at the regularly scheduled City Council Meeting on December 5, 2018.

WHEREAS, on December 5, 2018, the City Council of South Pasadena held a duly noticed regularly scheduled meeting to provide a public hearing and receive public testimony on the proposed Landmark Designation of the Library Tree.

NOW, THEREFORE, THE CITY COUNCIL OF THE CITY OF SOUTH PASADENA, CALIFORNIA, DOES RESOLVE, DECLARE, DETERMINE AND ORDER AS FOLLOWS:

SECTION 1. That the above recitals are all true and correct.

SECTION 2. The City Council has determined that the criteria standards as outlined in the Cultural Heritage Ordinance, Section 2.63(B), have been satisfactorily met for the eligibility of Landmark listing based upon the recommendation of applicable criteria by the Cultural Heritage Commission:

1. Its character, interest or value as a part of the heritage of the community.

The Library Tree is representative of two particular heritage characteristics the City of South Pasadena is known for: its historic environmental context, and its motto of the “City of Trees.” The Library Tree is evocative of the ethos of South Pasadena with its civic pride in preservation of historic artifacts be they natural resources or structures, and its civic pride in tree preservation and urban forestry. The Library Tree is not only historic in age, being planted nearly 90 years ago, but it is also deeply connected to the Historic City Library and its relocation within the Historic Library Park. The Library Tree has been known by countless generations of residents and visitors as a prominent focal point and natural resource within the City.

9. Its unique location or singular physical characteristic representing a familiar visual feature of a neighborhood.

The Library Tree is literally rooted with the history of the City’s Historic Library building and Library Park. The Library Tree was planted in 1930, the same year the Library was renovated, expanded, and relocated to its centralized location within the park where both tree and Library remain today. Over the decades, the Library Tree has grown into its current grand size as a fine specimen of the *Ficus macrophylla* within Southern California. Due to its size and significance, for decades the Tree has served as a local visual landmark, and a welcoming respite of shade, fun, and wonder for both young and old, and for both visitors and residents.

SECTION 3. The City Council considered the designation criteria contained in the Cultural Heritage Ordinance and makes the following findings as required in Section 2.63(A) based upon the recommendation of the Cultural Heritage Commission:

a. That the designation of Landmark or Historic District is consistent with one or more of the purposes set forth in Section 2.58B; and

The Subcommittee has established that the designation of the Library Tree meets the purpose of the Ordinance in establishing and preserving a Sense of Place as listed under Section 2.58B(A)(1). The Subcommittee finds that the Library Tree provides a sense of place through the preservation of the City’s heritage and character. The Library Tree was planted in 1930 by City employee, Willem Kloezeman. At the same time the City Library was moved from its original location to its more centrally-located site that the Library still occupies today.

The Library Tree is reflective of this moment in time of the City Library relocation and establishment of the surrounding park and therefore serves as a significant living and tangible reminder of the City's social, educational, cultural and architectural history as it has a timely relationship with the City Library, which is also a City Landmark, number 10. Therefore this finding can be made.

b. That the Landmark or Historic District meets one or more of the criteria for designation listed in Section 2.63(B); and

The Subcommittee has determined that the Library Tree meets Criteria (1) and (9) under subsection (B). Criteria (1) indicates that the Landmark is notable for "Its Character, interest, or value as a part of the heritage of the Community." The Library Tree serves as a living and tangible natural historic resource that provides a direct linkage to the development of the Library Park that exists today beginning in 1930 when the Library Tree was planted and the City Library was moved to its current location. Criteria (9) indicates the Landmark is notable for "its unique location or singular physical characteristic representing an established and familiar visual feature of the neighborhood." The Library Tree is uniquely located given its prominent location in the City's Historic Library Park and planted next to City Landmark Number 10, the City Library. The Library Tree provides a living linkage to the City's history, and affords the community a readily accessible Historic artifact. Therefore, this finding can be made.

c. That the Landmark or Historic District possesses Historic Integrity of Location, design, setting, materials, workmanship, feeling, or association.

The Library tree was planted in 1930, coinciding with the relocation of the City's Historic Library where both building and tree remain today. The Library Tree is unique given its prominent location, and its historic association to a listed Historic Resource, the City Library. Additionally, the Library Tree is unique to the City given its maturity, its size, and its articulated natural features such as its ribbed network of surface roots, its sweeping canopy that has provided shade to generations of the community, and its multi-stemmed and graceful trunk. Therefore, this finding can be made.

SECTION 4. Based on the evidence presented in the Staff Report, testimony received during the public hearing, minutes, other records of proceeding, and its findings herein, the City Council hereby approves the designation of the Moreton Bay Fig Tree (*Ficus macrophylla*), commonly known as the Library Tree located in the Library Park adjacent to the western wall of the Historic Library building at 1115 El Centro Street as official Historic Landmark Number 55.

SECTION 5. That this Resolution shall take effect immediately upon its adoption.

SECTION 6. The City Clerk of the City of South Pasadena shall certify to the passage and adoption of this resolution and its approval by the City Council and shall cause the same to be listed in the records of the City.

PASSED, APPROVED AND ADOPTED ON this 5th day of December, 2018.

Richard D. Schneider, M.D., Mayor

ATTEST:

APPROVED AS TO FORM:

Evelyn G. Zneimer, City Clerk
(seal)

Teresa L. Highsmith, City Attorney

I HEREBY CERTIFY the foregoing resolution was duly adopted by the City Council of the City of South Pasadena, California, at a regular meeting held on the 5th day of December, 2018, by the following vote:

AYES:

NOES:

ABSENT:

ABSTAINED:

Evelyn G. Zneimer, City Clerk
(seal)

ATTACHMENT 2
City Council Resolution No. 7583,
Setting the Date for the Designation of the Landmark

RESOLUTION NO. 7583

**A RESOLUTION OF THE CITY COUNCIL
OF THE CITY OF SOUTH PASADENA, CALIFORNIA,
SETTING A DATE AND TIME FOR A PUBLIC HEARING
FOR THE DESIGNATION OF THE MORETON BAY FIG TREE
KNOWN AS THE LIBRARY TREE LOCATED ADJACENT TO
THE CITY LIBRARY AT 1115 EL CENTRO STREET AS A
HISTORIC CITY LANDMARK**

WHEREAS, Section 2.62 of the South Pasadena Municipal Code, Ordinance No. 2315 (“Cultural Heritage Ordinance”) authorizes the Cultural Heritage Commission (“the Commission”) to recommend to the City Council the designation of appropriate properties as Landmarks; and

WHEREAS, on March 15, 2018, upon the Commission’s own initiative, a Landmark Subcommittee (“Subcommittee”) was formed to begin the recommendation procedures of the Library Tree as a City Landmark; and

WHEREAS, on August 8, 2018, the Subcommittee formalized their findings and notified Staff of their request to carry the Landmark nomination to the full CHC for the Commission’s formal vote on the recommendation to City Council for Designation; and

WHEREAS, on September 20, 2018, the CHC formalized their recommendation to the City Council for designation of the Library Tree as a City Landmark by a unanimous vote of 4-0, with one CHC member absent; and

WHEREAS, on October 4, 2018, the CHC provided notice to the City Council via the City’s Clerk’s office of the Commission’s formal recommendation to have the Library Tree designated as a City Landmark by the City Council of South Pasadena; and

WHEREAS, on October 17, 2018, the City Council of the City of South Pasadena held a duly noticed regularly scheduled meeting to set a date certain for the public hearing of the Landmark Designation.

NOW, THEREFORE, THE CITY COUNCIL OF THE CITY OF SOUTH PASADENA, CALIFORNIA, DOES RESOLVE, DECLARE, DETERMINE AND ORDER AS FOLLOWS:

SECTION 1. That the above recitals are all true and correct.

RESOLUTION NO. 7583

Page 2

SECTION 2. PUBLIC HEARING. NOTICE IS HEREBY GIVEN THAT ON WEDNESDAY, THE 5TH DAY OF DECEMBER, 2018, AT THE HOUR OF 7:30 PM, AT THE REGULAR MEETING OF THE SOUTH PASADENA CITY COUNCIL, IN THE AMEDEE O. "DICK" RICHARDS, JR. COUNCIL CHAMBER, 1424 MISSION STREET, SOUTH PASADENA, CALIFORNIA 91030, IS THE TIME AND PLACE FIXED BY THE CITY COUNCIL FOR THE PUBLIC HEARING ON THE LANDMARK DESIGNATION OF THE LIBRARY TREE LOCATED ADJACENT TO THE SOUTH PASADENA LIBRARY.


SECTION 3. NOTICE. That the Planning Division is hereby authorized and directed to publish, pursuant to Government Code Section 6061, a copy of this Resolution in a newspaper of general circulation within said City, said publication shall be not less than ten (10) days before the date set for said Public Hearing.

SECTION 4. That the City Clerk is further directed to cause a copy of the Resolution of Intention to be posted upon the official bulletin board customarily used for the posting of notices.

SECTION 5. That this Resolution shall take effect immediately upon its adoption.


SECTION 6. The City Clerk of the City of South Pasadena shall certify to the passage and adoption of this resolution and its approval by the City Council and shall cause the same to be listed in the records of the City.

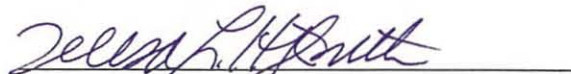
PASSED, APPROVED AND ADOPTED ON this 17th day of October, 2018.


Richard D. Schneider, M.D., Mayor

ATTEST:

APPROVED AS TO FORM:


Evelyn G. Zneimer, City Clerk
(seal)


Teresa L. Highsmith, City Attorney

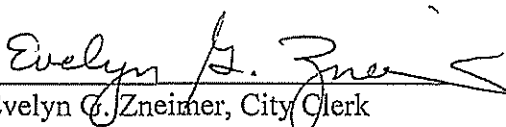
I HEREBY CERTIFY the foregoing resolution was duly adopted by the City Council of the City of South Pasadena, California, at a regular meeting held on the 17th day of October, 2018, by the following vote:

AYES: Cacciotti, Joe, Khubesrian, Mahmud, and Mayor Schneider

NOES: None

ABSENT: None

ABSTAINED: None


Evelyn G. Zneimer, City Clerk
(seal)

ATTACHMENT 3

CHC Letter of Notice to City Council on Decision for
Recommendation of Designation



City of South Pasadena

1414 MISSION, SOUTH PASADENA, CA 91030 ▪ TEL: 626.403.7220 ▪ WWW.SOUTHPASADENACA.GOV

PLANNING & BUILDING DEPARTMENT

CULTURAL HERITAGE COMMISSION

October 4, 2018

THE SOUTH PASADENA CITY COUNCIL
1414 Mission Street
South Pasadena, CA 91030

RE: LANDMARK DESIGNATION FOR THE CITY LIBRARY TREE LOCATED AT THE CITY'S HISTORIC LIBRARY PARK

Dear Honorable Council Members:

At their regularly scheduled meeting on September 20, 2018, the Cultural Heritage Commission unanimously voted to recommend to the Council that the Moreton Bay Fig tree, known as the Library Tree, be designated as an official City Landmark. Included herein are the findings that the CHC has made in accordance to the City's Cultural Heritage Ordinance, Section 2.58 of the South Pasadena Municipal Code.

The Library Tree was originally planted in 1930, and coincided with the relocation of the City's Historic Library where both tree and building remain today. The Library Tree is widely known by multiple generations of residents and visitors. The Library Tree provides a living linkage to the City's history, and affords the community a readily accessible Historic Resource.

As part of the Designation Procedure requirements detailed in SPMC, Section 2.63(C)(7), the Commission shall notify in writing to the City Council regarding their decision on recommendation within 15 days of the CHC hearing.

The Cultural Heritage Commission enthusiastically recommends this Historic Resource to the City Council for designation as a City Landmark. We, the Commission, look forward to receiving any questions or other feedback which the Council may have.

Sincerely,

Mark Gallatin
Chair, Cultural Heritage Commission

Attachment:
Staff Memorandum to CHC Outlining the Findings of the Landmark Subcommittee.

ATTACHMENT 4
CHC Landmark Subcommittee Report and Findings

CHC Subcommittee Report, July 19, 2018
Victor Holz, Commissioner
Rebecca Thomson, Commissioner

Library Park's Moreton Bay Fig Tree: Eligibility for landmark status.

Introduction

Located on the west end of the South Pasadena Library, the Morton Bay Fig Tree is hard to miss. With its massive buttressing roots, sweeping canopy and roots that flow and twist downward into the soil, the 88 year old Fig tree serves as a focal point of interest for residents and visitors alike.

In 1930, South Pasadena resident and City Streets Department Worker Willem Kloezeman planted this majestic tree while the Carnegie Library was being moved to the center of Library Park from its previous location near Diamond Street. Eight other Morton Bay Fig trees can be found from San Diego to San Francisco each a focal point of their respective communities with two located in Ventura and Santa Barbara listed as historic landmarks. It seems appropriate that South Pasadena nicknamed "The City of Trees" protect and preserve this grand tree.

Recommendation for Landmark Status.

Pursuant to South Pasadena Municipal Code Section 2.58B (A) (1) we recommend that the Library Park Moreton Bay Fig Tree be given landmark status based on it meeting one or more criteria listed in Section 2.63(B)

2.63(B) (1) Its character, interest or value as a part of the heritage of the community.

2.63(B) (9) Its unique location or singular physical characteristic representing a familiar visual feature of a neighborhood.



Figure 1: Undated photograph of Willem Kloeze-man



Figure 2: Undated photograph of Willem Kloezenman at the South Pasadena Water Department



Figure 3: Undated photograph of Willem Kloeze-man



Figure 4: Undated photograph of Willem Kloezeman



Figure 5: Present-day image of the Library Tree



Figure 6: Present-day image of the Library Tree and its root system

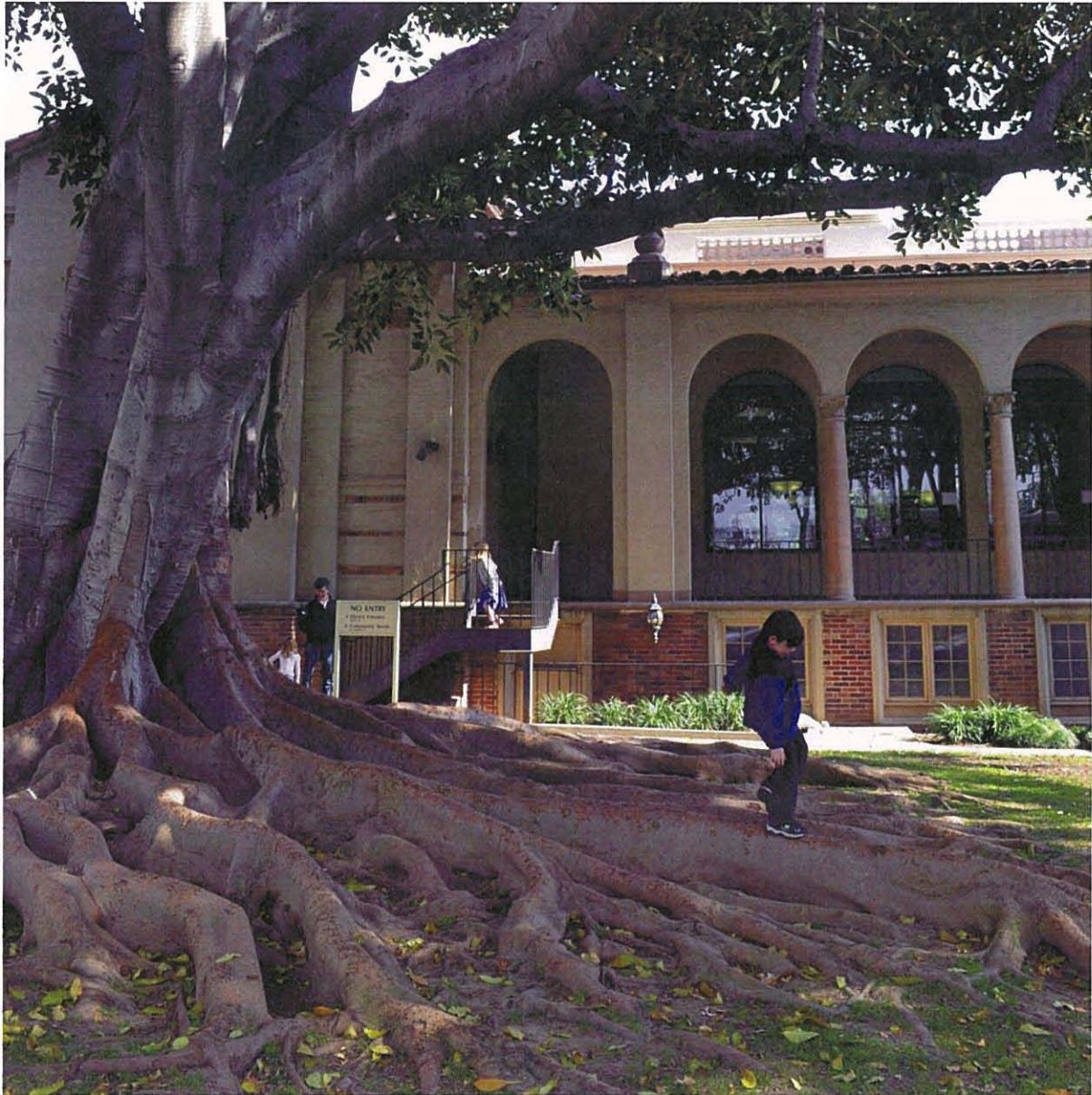


Figure 7: Present-day image of the Library Tree and its root system



Figure 8: Present-day image of the Library Tree and its root system

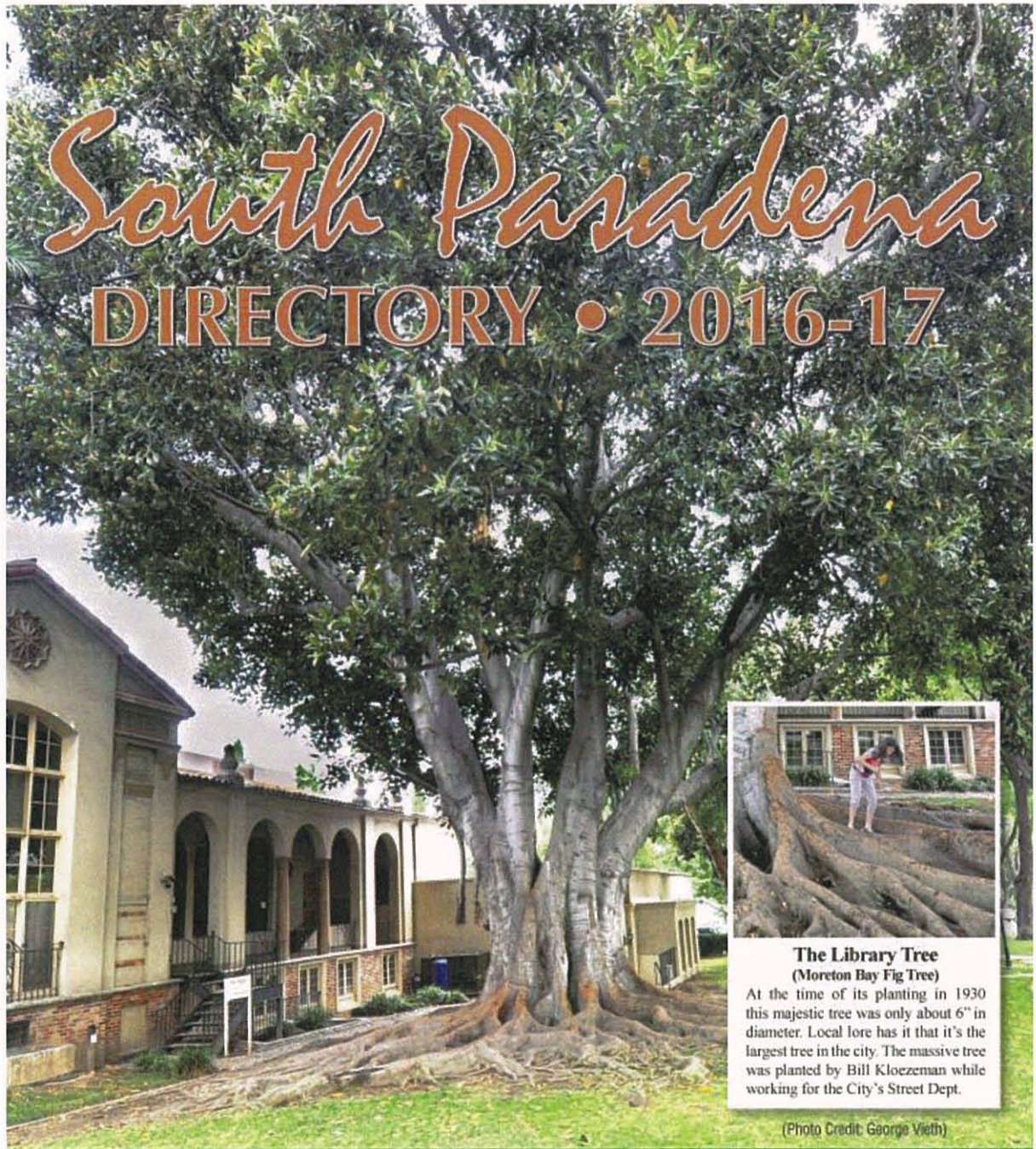


Figure 9: Cover Photo of the South Pasadena Phone Directory

ATTACHMENT 5

Staff Memorandum to CHC Compiling the Findings
of the CHC Landmark Subcommittee



City of South Pasadena


PLANNING & BUILDING DEPARTMENT

1414 MISSION, SOUTH PASADENA, CA 91030 ▪ TEL: 626.403.7220 ▪ WWW.SOUTHPASADENACA.GOV

INFORMATIONAL MEMORANDUM

DATE: September 18, 2018

TO: **Members of the Cultural Heritage Commission**

FROM: Edwar Sissi, Associate Planner 

SUBJECT: LIBRARY TREE HISTORIC LANDMARK NOMINATION
PROJECT# 2155-LHD

Dear Commissioners:

In accordance to the City's Cultural Heritage Ordinance ("Ordinance"), Chapter 2.58 of the South Pasadena Municipal Code, the CHC will consider a recommendation by the established Subcommittee regarding the nomination of a new City Landmark. The Subcommittee is nominating the South Pasadena Library Park's Moreton Bay Fig Tree. City Staff is supportive of this nomination, and we are recommending the CHC formalize a recommendation to City Council for the designation of the Library Tree as an official City Landmark pursuant to SPMC Section 2.63(B)(6) and (7).

Required Findings per Section 2.63(A):

- a. That the designation of Landmark or Historic District is consistent with one or more of the purposes set forth in Section 2.58B; and**

The Subcommittee has established that the designation of the Library Tree meets the purpose of the Ordinance in establishing and preserving a Sense of Place as listed under Section 2.58B(A)(1). The Subcommittee finds that the Library Tree provides a sense of place through the preservation of the City's heritage and character. The Library Tree was planted in 1930 by City employee, Willem Kloezeman. At the same time the City Library was moved from its original location to its more centrally-located site that the Library still occupies today. The Library Tree is reflective of this moment in time of the City Library relocation and establishment of the surrounding park and therefore serves as a significant living and tangible reminder of the City's social, educational, cultural and architectural history as it has a timely relationship with the City Library, which is also a City Landmark, number 10. Therefore this finding can be made.

- b. That the Landmark or Historic District meets one or more of the criteria for designation listed in Section 2.63(B); and**

The Subcommittee has determined that the Library Tree meets Criteria (1) and (9) under subsection (B). Criteria (1) indicates that the Landmark is notable for "Its Character, interest, or value as a part of the heritage of the Community." The Library Tree serves as a living and tangible natural historic resource that provides a direct linkage to the development of the Library Park that

exists today beginning in 1930 when the Library Tree was planted and the City Library was moved to its current location.

Criteria (9) indicates the Landmark is notable for "its unique location or singular physical characteristic representing an established and familiar visual feature of the neighborhood." The Library Tree is uniquely located given its prominent location in the City's Historic Library Park and planted next to City Landmark Number 10, the City Library. The Library Tree provides a living linkage to the City's history, and affords the community a readily accessible Historic artifact. Therefore, this finding can be made.

- c. **That the Landmark or Historic District possesses Historic Integrity of Location, design, setting, materials, workmanship, feeling, or association.**

The Library tree was planted in 1930, coinciding with the relocation of the City's Historic Library where both building and tree remain today. The Library Tree is unique given its prominent location, and its historic association to a listed Historic Resource, the City Library. Additionally, the Library Tree is unique to the City given its maturity, its size, and its articulated natural features such as its ribbed network of surface roots, its sweeping canopy that has provided shade to generations of the community, and its multi-stemmed and graceful trunk. Therefore, this finding can be made.

Designation Procedure (SPMC 2.63(C)):

- 1. **The Commission, upon its own initiative or upon the written request of any person or City agency, may recommend the designation of any Cultural Resource in the City as a Landmark or Historic District.**

The nomination of the Library Tree was brought to the Commission's attention by Chairperson Mark Gallatin at the CHC's March 2018 meeting. Upon the Commission's own initiative, Commissioner Gallatin suggested the formation of the Library Tree Landmark Subcommittee.

- 2. **The Commission shall appoint a subcommittee of two members (the "Landmark subcommittee") to review all applications for consideration of an Improvement, Site or natural feature as a Landmark or Historic District. The Landmark subcommittee shall review the application materials and make a preliminary written recommendation, based on such documentation as it may require, as to whether the Commission shall consider the Improvement, Site or natural feature for appropriate designation.**

The Library Tree Landmark Subcommittee was formed at the March 2018 CHC meeting. Commission members Rebecca Thompson and Victor Holz volunteered to be on the Subcommittee.

- 3. **If the Landmark subcommittee determines that the Improvement, Site or natural feature, which is the subject of the application, merits consideration by the Commission, it shall recommend that the Commission place the application upon its agenda for its next regularly scheduled meeting for consideration of such designation.**

The Subcommittee has determined that the Library Tree, as a natural feature, merits consideration by the Commission. The Subcommittee has provided written documentation to Staff in recommending that the Commission place the application upon its Agenda for the September 2018 meeting to consider the designation.

- 4. **The Commission shall notify the Director of the pendency of the consideration. No applications for Design Review shall be accepted by the Planning and Building Department to construct, alter or demolish any property that is not on the South Pasadena Inventory of Historical Resources within**

a proposed Historic District, subsequent to the date of notice to the Director by the Commission, while proceedings are pending on such designation; provided, however, that after one hundred eighty days have elapsed from the date of the notice, if final action on such designation has not been completed, the applications for Design Review may be accepted by the Planning and Building Department.

The Subcommittee has provided Staff with written documentation to support the nomination of the Library Tree as a City Landmark. The written documentation was received on August 8, 2018.

5. The Commission shall send written notice by certified mail to each directly affected owner of a proposed designation as a Landmark or Historic District of the date, place, time and purpose of the hearing to consider such designation, at least twenty (20) days prior to the date of the hearing, and shall publish notice of such hearing at least once in a newspaper of general circulation in the City not less than ten days prior to such hearing.

The Subcommittee provided their written recommendation to Staff on August 8, 2018. Due to a 20 day noticing requirement, the nomination was not formalized as a Decision Item on the Agenda for the August 16, 2018 CHC meeting. At the August 2018 CHC meeting, the Commission received and filed the Subcommittee report to make a formal recommendation at the September 20, 2018 CHC meeting, subject to the 20 day noticing requirement as outlined in SPMC Section 2.63(C)(5).

As a City-driven project, a formal notification memo was sent to the City Manager, and the Library Director. The City also mailed individual property notices to all properties within a 300 foot radius of the Library Park in which the Library Tree is located. Additionally, the nomination of the Library Tree was duly noticed in the South Pasadena Review on September 7, 2018.

6. The Commission shall provide an opportunity to be heard to each affected owner and other interested members of the public. The Commission may, if necessary, continue the consideration of designation to its next regularly scheduled meeting.

The formal recommendation to designate the Library Tree as a City Landmark has been placed on the CHC Agenda for the September 20, 2018 meeting. At this meeting, the CHC will provide the opportunity for members of the public to be heard.

7. The Commission shall, within fifteen (15) days of its hearing regarding designation or of any continued hearing on the designation, recommend approval in whole or in part, or disapproval in whole or in part of the application, in writing to the City Council.

If the nomination of the Library Tree is not continued, the Commission shall respond in writing within 15 days of September 20, 2018, to the City Clerk's office of the decision that took place at the meeting regarding the recommendation for designation.

Staff Recommendation:

In concurrence with the Subcommittee's findings, Staff is recommending that the CHC uphold the recommendation of the Subcommittee in designating the Library Tree as an Historic Resource, and recommend to the City Council its designation as a City Landmark.

Attachments:

1. Subcommittee Report and Photographs
2. Nomination form of the South Pasadena Library, City Landmark No. 10
3. Official Notification Memos to the City Manager and Library Director
4. Newspaper Advertisement Notifying Public of Pending Landmark Nomination

ATTACHMENT 6

South Pasadena Review Newspaper Article on the
Library Tree (Dated: March 6, 2018)

Origin of Library's Magnificent Moreton Bay Fig Tree Revealed

A brief history of South Pasadena's famous Moreton Bay Fig tree In honor of Arbor Day

By **SouthPasadenan.com** - March 6, 2018



PHOTO: Courtesy of Laurie Allee | SouthPasadenan.com | Morton Bay Fig Tree at the South Pasadena Library

By Steve Fjeldsted, Library Director

South Pasadena is nicknamed "The City of Trees" and is an official "Tree City USA," yet the origin of what is perhaps its most famous tree has been a mystery at the Library for quite some time. It's no wonder that many have asked about the origin of the Library Park's massive Moreton Bay Fig tree because local lore has it that it's the largest tree in the city. One of the town's other legends has it that the very same tree has magical powers that boost the imaginations of those who come into contact with it. Both beliefs could possibly be true, but they would certainly be difficult to prove.

It would seem that it should be pretty easy to find out the exact origin of the beloved tree, especially since the Library has a voluminous Local History collection with thousands upon thousands of photos, articles, books, pamphlets, and much more. It would seem logical that the Library would have scads of information on the gigantic, legendary tree that stands only a few feet from its west wall. Unfortunately, that hasn't been the case. Despite all the attention the majestic tree gets, from daily visitors of all ages to the Library Park, a search some months back revealed that the Library has no record when the tree was planted -or even when it was purchased.

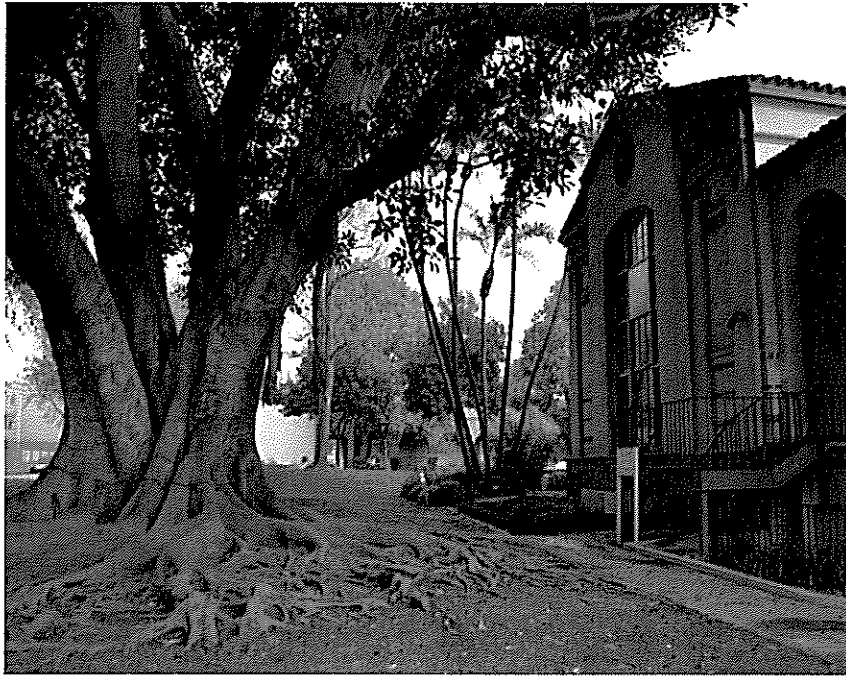


PHOTO: Courtesy of Laurie Allee | SouthPasadenan.com | Morton Bay Fig Tree at the South Pasadena Library

Matt Ritter, author of "A Californian's Guide to the Trees Among Us," who visited the tree before speaking at a South Pasadena Library Author Night recently, estimated that the Moreton Bay Fig tree might be 100 years old. The Library Director submitted an article to "The Quarterly" shortly afterwards about the history of South Pasadena Library in which the unknown origin of the Moreton Bay Fig Tree was mentioned and the article appeared in the Winter 2011 issue.

After reading the piece, lifetime South Pasadena resident Bill Kloezeman stepped forward to clear up the mystery. Bill's father, Willem Garret Andries Kloezeman, who was also known as Bill, planted the tree in 1930 while South Pasadena's Carnegie Library was being moved to the center of Library Park from its previous location nearer to Diamond Street. Many years ago while driving around town, the elder Bill Kloezeman used to tell his son about all the work he'd done around town, including his planting of the Moreton Bay Fig. Another well-known project of Kloezeman was the annual placement of a lighted star on the top of the water storage tower atop Bilicke Hill in the Altos de Monterey.

At the time of the planting, the Moreton Bay Fig was a young potted tree and about 6 inches in diameter. When the senior Kloezeman planted it, he was working for the City's Street Department. In all, Bill (Sr.) worked for the City of South Pasadena from 1926 until he retired in 1972, a remarkable stretch of more than 45 years. While working for the Street Department in the 20's and 30's, Kloezeman planted many other large trees in town that are still around. Later he also worked for the Fire Department in the 40's and the Water Department in the 50's, 60's, and early 70's, until he retired as a Water Service Foreman on January 15, 1972. Willem "Bill" Kloezeman passed away on September 7, 1981.

Enormous thanks are due to the Kloezeman Family for sharing the story about the stately Library tree's beginnings. As author Matt Ritter stated, "It's a magnificent specimen." And that's certainly the case no matter if the tree has supernatural powers or not.

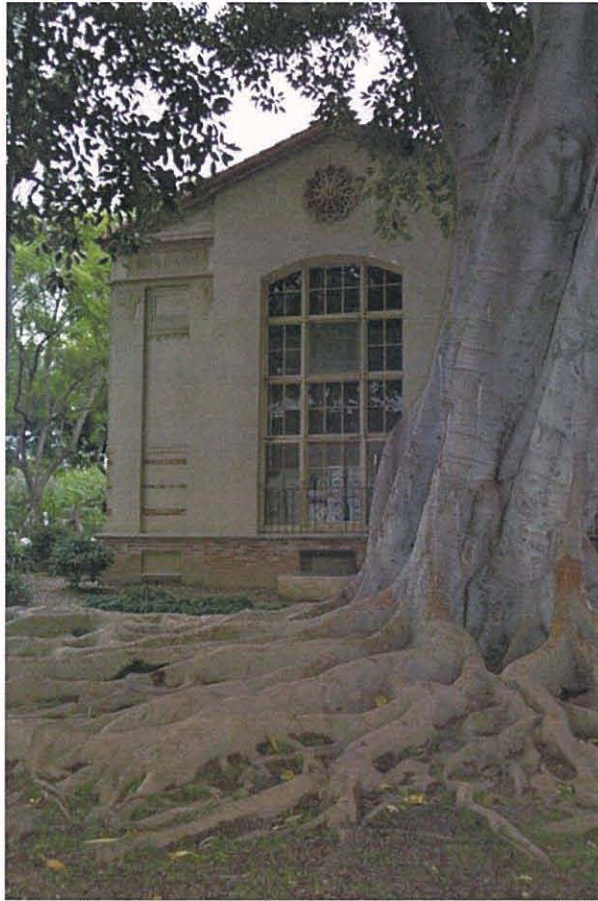


PHOTO: Courtesy of Laurie Allee | [SouthPasadenan.com](https://southpasadenan.com) | Morton Bay Fig Tree at the South Pasadena Library

SouthPasadenan.com

<https://southpasadenan.com>

South Pasadena News | Most Read News & Lifestyle Publication News, Events, Schools, & Happenings in the South Pasadena, Pasadena, Los Angeles Metro Areas.

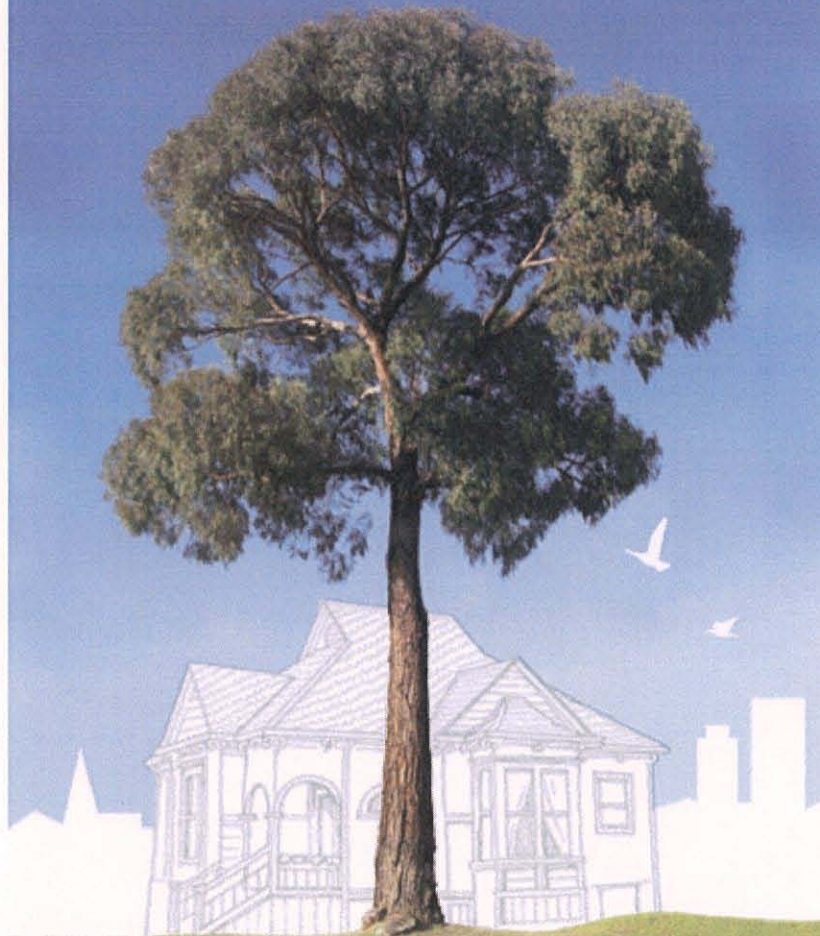


FOLLOW US ON INSTAGRAM

@SOUTHPASADENAN

ATTACHMENT 7
Library Park Tree Inventory and
Excerpts from Dr. Matt Ritter's Book:
A Californian's Guide to the Trees Among Us

**A Californian's Guide to the
TREES AMONG US**



MATT RITTER Foreword by Peter H. Raven



Ficus macrophylla

Moreton Bay Fig

FYE-kuss mak-row-FYE-lah

Ficus - L., name for the edible fig

macrophylla - Gr., large leaves

Moraceae



Eastern Australia

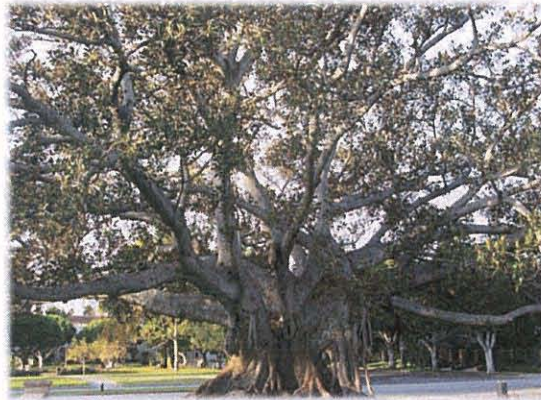
Simple, Alternate

Evergreen, 50–75 ft.

The largest and most remarkable figs in California are the Moreton Bay figs. They have massive buttressing roots, sweeping canopies, and woody, aerial roots that flow and twist downward to the soil. Many spectacular specimens planted in the 1800s persist in Southern California.



Shoot tip showing figs, deciduous stipules, and rusty leaf undersides



Old trees in their living state are the only things that money cannot command.
—Walter Savage Landor

California's Notorious Moreton Bay Figs

Santa Barbara Train Station

34°24'48.91"N 119°41'38.42"W,
Planted 1876

Balboa Park, San Diego

32°43'57.90"N 117°8'50.88"W,
Planted 1914

Mission Park, Ventura

34°16'49.26"N 119°17'53.59"W,
Planted 1874

St. Luke's Hospital, San Francisco

37°44'50.93"N 122°25'13.29"W,
Planted 1905

Fairmont Miramar Hotel, Santa Monica

34°1'3.72"N 118°30'4.98"W,
Planted 1889

Owens Tree, Glendora

34°7'36.92"N 117°51'58.97"W,
Planted 1905

Beverly Hills Fig

34°4'20.12"N 118°24'13.93"W,
Planted 1910

La Mesa Drive Trees, Santa Monica

34°2'56.04"N 118°29'39.35"W,
Planted 1920

Trees of the South Pasadena Library

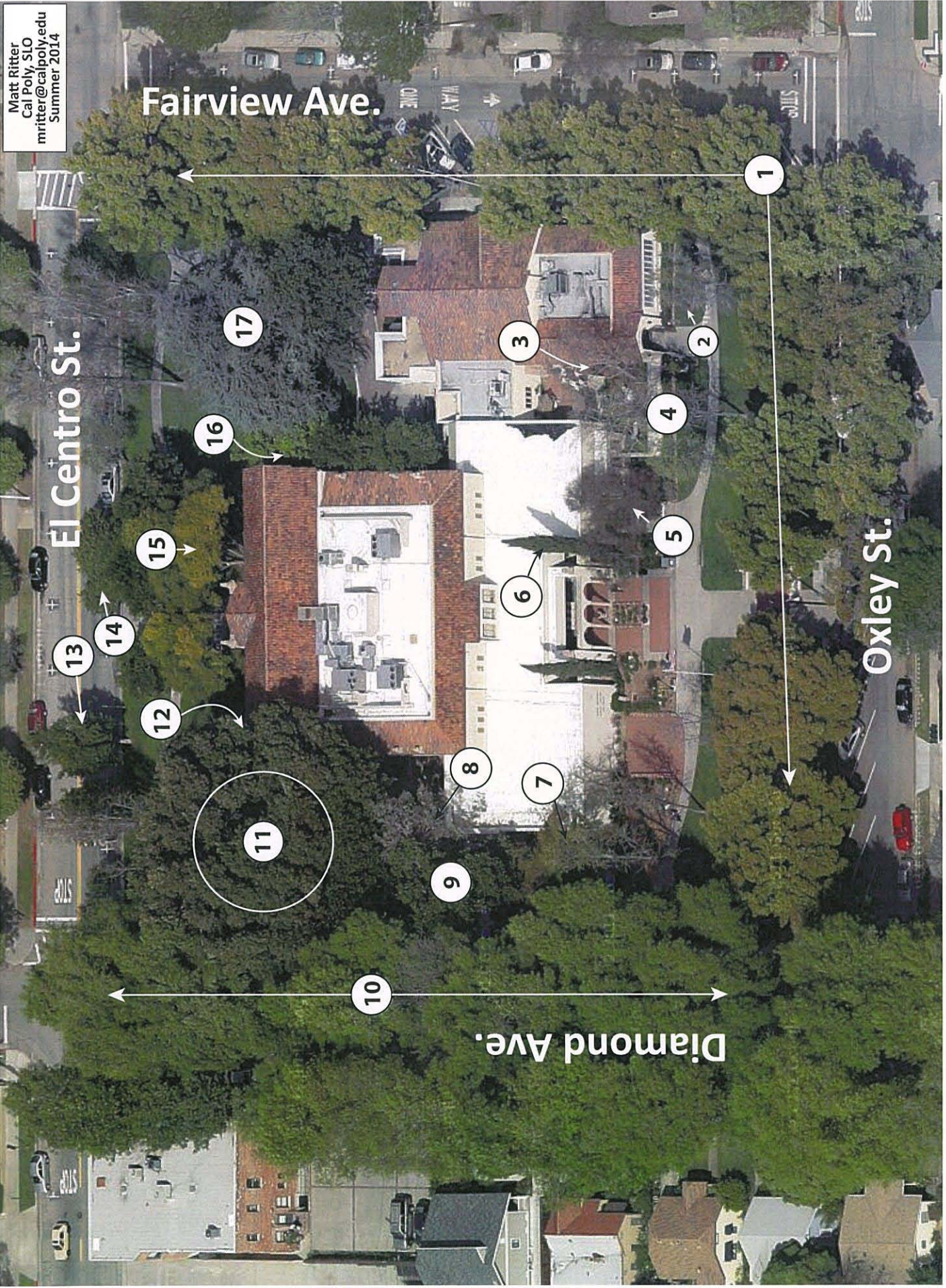
Map #	Scientific Name	Common Name	Family	Native Range
1	<i>Cinnamomum camphora</i>	Camphor Tree	Lauraceae	China and Japan
2	<i>Picea sitchensis</i>	Sitka Spruce	Pinaceae	Western North America
3	<i>Platanus x hispanica</i>	London Plane Tree	Platanaceae	Hybrid, Origin Unknown
4	<i>Liquidambar styraciflua</i>	American Sweet Gum	Altingiaceae	Connecticut to Central America
5	<i>Lagerstroemia indica</i>	Crape Myrtle	Lythraceae	Indochina to Japan
6	<i>Cupressus sempervirens</i>	Italian Cypress	Cupressaceae	Mediterranean to Pakistan
7	<i>Ceiba speciosa</i>	Floss Silk Tree	Bombacaceae	South America
8	<i>Eucalyptus polyanthemos</i>	Silver Dollar Gum	Myrtaceae	Southeastern Australia
9	<i>Magnolia grandiflora</i>	Southern Magnolia	Magnoliaceae	Southeastern United States
10	<i>Fraxinus uhdei</i>	Mexican Evergreen Ash	Oleaceae	Central America
11	<i>Ficus macrophylla</i>	Moreton Bay Fig	Moraceae	Eastern Australia
12	<i>Phoenix reclinata</i>	Senegal Date Palm	Arecaceae	Tropical Africa
13	<i>Cupaniopsis anacardioides</i>	Carrotwood Tree	Sapindaceae	Eastern Australia
14	<i>Schinus terebinthifolius</i>	Brazilian Pepper Tree	Anacardiaceae	Tropical America
15	<i>Jacaranda mimosifolia</i>	Jacaranda	Bignoniaceae	Argentina and Brazil
16	<i>Magnolia x soulangeana</i>	Saucer Magnolia	Magnoliaceae	Garden hybrid
17	<i>Cedrus atlantica</i>	Blue Atlas Cedar	Pinaceae	North Africa

Use *A California's Guide to the Trees among Us* by Matt Ritter to learn more about these trees.

Notes:

Dr. Matt Ritter
 Cal Poly, San Luis Obispo
 Summer 2014, mritter@calpoly.edu

Matt Ritter
Cal Poly, SLO
mritter@calpoly.edu
Summer 2014



Fairview Ave.

El Centro St.

Diamond Ave.

Oxley St.

1

2

3

4

5

6

7

8

9

10

11

12

13

14

15

16

17

ATTACHMENT 8
Letter of Support

Darby Whipple

From: Bianca R
Sent: Saturday, September 8, 2018 2:40 PM
To: Darby Whipple
Cc: Steve Fjeldsted; Rebecca Thompson
Subject: Recommendation Library Tree for Historic Landmark

As a life long resident of South Pasadena and a resident of the library district, I support the nomination of the Library Tree, Moreton Bay Fig, as a South Pasadena Historic Landmark. South Pasadena is known as a tree city and with that comes duty and responsibility. All trees should be respected and protected. This tree is a great symbol of the city and of the library park/district.

Sincerely,

Bianca R

ATTACHMENT 9
Proof of Public Notification of Public Hearing
Designation, South Pasadena Review

**PROOF OF PUBLICATION
(2015.5 C.C.P.)**

**STATE OF CALIFORNIA
COUNTY OF LOS ANGELES**

I am a citizen of the United States and employed by a publication in the County aforesaid; I am over the age of eighteen years, and not a party to or interested in the mentioned matter. I am the principal clerk of the **South Pasadena Review**, a newspaper published weekly in the **City of South Pasadena, County of Los Angeles**, and adjudged a newspaper of general circulation by the Superior Court of the **County of Los Angeles**, State of California, on the date of July 31, 1952, Case Number 601549. The notice, of which the attached is a printed copy (set in type not smaller than nonpareil) has been published in each regular and entire issue of said newspaper and not in any supplement thereof on the following dates, to-wit:

November 16, 2018

I certify, under the penalty of perjury, that the foregoing is true and correct.


Signature

Dated in South Pasadena, California

November 16, 2018

**PROOF OF PUBLICATION
SOUTH PASADENA REVIEW
P.O. Box 3710
South Pasadena, CA 91031
(626) 792-6397**

SOUTH PASADENA REVIEW PUBLIC NOTICE

PUBLIC NOTICE

CITY OF SOUTH PASADENA CITY COUNCIL TO HOLD A PUBLIC HEARING ON THE DESIGNATION OF A HISTORIC LANDMARK FOR THE MORETON BAY FIG TREE LOCATED IN THE LIBRARY PARK AT 1115 EL CENTRO STREET IN THE CITY OF SOUTH PASADENA, CALIFORNIA

The City of South Pasadena hereby gives notice that the City Council will consider a recommendation by the Cultural Heritage Commission to designate the Moreton Bay Fig Tree located in the Library Park at 1115 El Centro Street, historically known as the Library Tree, as a City Landmark.

Public Hearing Scheduled

The City Council of the City of South Pasadena will conduct a public hearing for the purpose of considering the Cultural Heritage Commission's recommendation to designate the Moreton Bay Fig Tree, known as the Library Tree as a City Landmark. The Library Tree is located adjacent to the Historic South Pasadena Library in the Library Park at 1115 El Centro Street. The tree was planted in 1930, coinciding with the relocation of the library building.

Date & Time: Wednesday, December 5, 2018 beginning at 7:30 p.m.

**Location: City Council Chambers, City Hall
1424 Mission Street, South Pasadena**

Questions/Comments

The City of South Pasadena encourages public comment on this and other projects. You or your representative, or any other persons may comment at the Public Hearing, or provide written comment to the Planning and Building Department, 1414 Mission Street, South Pasadena, California, 91030, or you may call 626-403-7220.

Environmental Review

The Planning and Building Department of the City of South Pasadena has reviewed this project and determined that it is Categorically Exempt under the California Environmental Quality Act (CEQA) review, under Section 15308, Class 8.

David Bergman, AICP
Interim Director of Planning and Building

NOTE: STATE GOVERNMENT CODE SECTION 65009 NOTICE: If you challenge this application in court, you may be limited to raising only those issues you or someone else raised at the public hearing described in this notice, or in written correspondence delivered to the City of South Pasadena at, or prior to, the public hearing.

PUBLISHED DATE: NOVEMBER 16, 2018 – SOUTH PASADENA REVIEW

ATTACHMENT 10
Listing of South Pasadena Landmarks

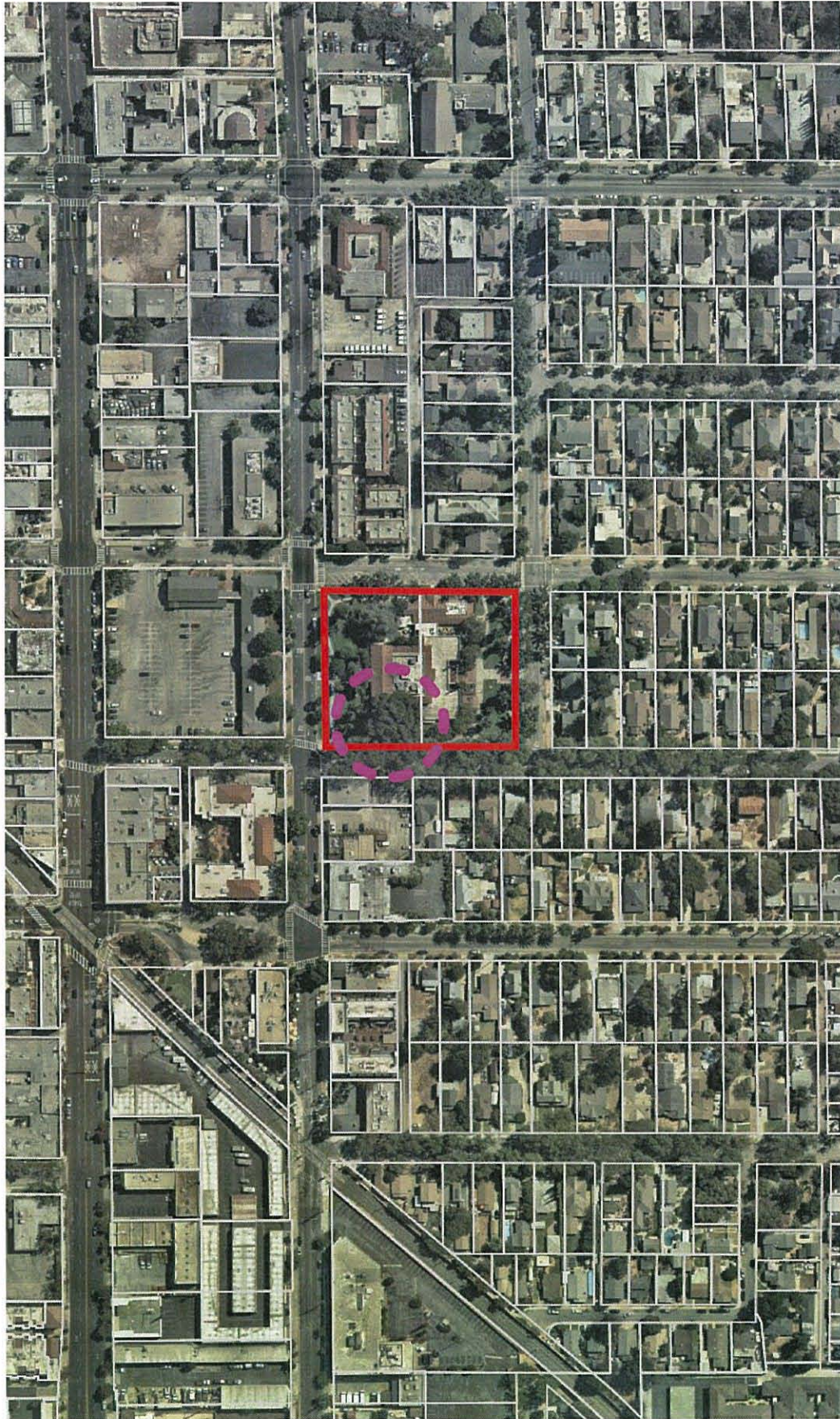
SOUTH PASADENA HISTORIC LANDMARKS

Landmark No.	Address	APN	Historic Name	Year Built	Type	Status Code	National Register	City Council Resolution	Date Designated
1	1804 Foothill Street	5318-002-018	Adobe Flores & Cactus Garden	1843-1846	SFR	1S	Yes, 1973	CHC	November 18, 1971
2	435 Fair Oaks Avenue	5317-019-900	South Pasadena War Memorial Building	1921-1922	Community	2S			November 15, 1971
3	Oaklawn & Fair Oaks Avenue		Oaklawn Bridge and Waiting Station	1906	Community	2S	Yes, 1973		May 26, 1905
4	1001 Buena Vista Street	5317-009-025	Garfield Residence	1905	SFR	1B	Yes, 1973		March 16, 1972
5	913 Meridian Avenue	5315-020-906	Meridian Iron Works Building	1890	Community	1D			March 16, 1972
6	851 Lyndon Street	5314-020-015	Wynyate	1887	SFR	1S	Yes, 1973		March 16, 1972
7	Meridian Ave. Parkway		Meridian Avenue Watering Trough and Wayside Station	1906	Community				March 16, 1972
8	1017-1019 El Centro Street	5315-006-015	South Pasadena Bank Building	1904	Commercial	1D			March 16, 1972
9	Oaklawn & Columbia Street	multi	Oaklawn Avenue Portals	1905	Community				March 16, 1972
10	1115 El Centro Street	5315-007-901 5315-007-903	South Pasadena Public Library	1907-1908 & 1930	Community	1D			March 16, 1972
11	1301 Chelten Way	5320-028-004	Miltimore House	1911	SFR	1S	Yes, 1971		May 17, 1972
12	Ashbourne Drive & Chelten Street	multi	Ashbourne Drive & Chelten Street Oak Trees	c. 1891	Oak Tree				May 17, 1972
13	1635 Laurel Street	5320-008-015	Clokey Oak Tree	c. late 1700s	Oak Tree				June 15, 1972
14	2007 Ashbourne Drive	5321-002-031	Ashbourne -Chelten Hybrid Oak Tree	unknown	Oak Tree				June 15, 1972
15	215 Orange Grove Avenue	5317-039-020	Andrew O. Porter Residence	1875	SFR	3S			September 20, 1972
16	Fair Oaks Avenue & Raymond Hill		Rayond Hill Waiting Station	c. 1902					October 19, 1972
17	1005 Buena Vista Street	5317-009-91	Howard Longley Residence	1897	SFR	1B	Yes, 1974		October 19, 1972
18	Between Sycamore & Pasadena Avenue & Metro ROW	multi	Cawston Ostrich Farm	c. 1986	Site				March 15, 1973
19	Arroyo Drive, (opposite 430 Arroyo Drive)	5493-038-905	Cathedral Oak Monument	c. 1930	Marker				January 17, 1974
20	424 & 430 Arroyo Drive	5317-043-017 5317-043-018	Manuel Garfias Adobe Site		Site				April 17, 1975
21	1103 Monterey Road	5319-028-001	Leo Longley Residence	1885	SFR	4S2			June 26, 1975
22	920 Fremont Avenue	5315-003-022	Grace Brethren Church	1907	Church	3S		CC	April 20, 1977
23	225 Grand Avenue	5317-044-023	Dr. John S. Tanner Residence	1917	SFR	3S		CC	April 20, 1977
24	1414 Alhambra Road	5319-013-039	Lloyd E. Morrison Residence	1923	SFR	5S1		CC	April 20, 1977
25	1019 Fair Oaks Avenue	5315-003-043	Rialto Theatre	1924	Commercial	1S	yes, 1978	CC	December 1, 1977
26	950-966 Mission Street	5315-021-001	Mission Arroyo Hotel	1923	Commercial	1D		CC	April 18, 1979
27	729 Mission Street	5313-007-068	Baragner Studios	1925	Commercial	3S		CC	June 3, 1981
28	816 Bonita Drive	5310-035-901	Gokowski House	1928	SFR	2S		CC	July 5, 1979
29	309 Monterey Road	5311-012-004	Vivekaqanda House	c. 1877	SFR	3S		CC	April 20, 1983
30	1327 Diamond Avenue	5315-008-900	School Administration Building	1925	Community	5S1		CC	July 6, 1983
31	634-636 Mission Street	5313-006-041	Markey Building	1928	Commercial	5S1		CHC	October 26, 1983

SOUTH PASADENA HISTORIC LANDMARKS

Landmark No.	Address	APN	Historic Name	Year Built	Type	Status Code	National Register	City Council Resolution	Date Designated
32	2017 Edgewood Drive	5321-003-900	Eddie House & Memorial Park	1910	Community	5B1		CC	July 5, 1984
33	1325 Monterey Road	5319-028-036	St. James Episcopal Church	1907	Church			CC	May 6, 1987
34	709 Meridian (original) / 1000 Mission Street (relocated)	5315-014-047	Century House / Halloween House	1888/1889	SFR/ Commercial	1S		CC	February 3, 1988
35	517 Garfield Avenue	5318-002-002	Adobe "Eulalia Perez"	1924	SFR	5B1		CC	December 2, 1992
36	201 Orange Grove Avenue	5317-039-013	Bissell House	1887	SFR	4S		CC	April 7, 1993
37	1501 Mission Street / 906 Mound Avenue	5315-003-046	Pettee Building	1923	Commercial	5D3		CC 6408	August 7, 1996
38	410 Arroyo Drive (approximate location)	5317-043-022	Garfias Spring Site		Site			CC 6541	March 5, 1997
39	2031 Berkshire Avenue	5310-017-004	Mabel Packard House	1914	SFR	5B1		CC 6542	March 5, 1997
40	844 Monterey Road	5315-018-021	Washburn House	1908	SFR	5D3		CC 6498	August 6, 1997
41	929 Buena Vista Street	5317-035-004	Torrance Childs House	1902	SFR	2B		CC 6530	July 5, 1998
42	1120 Buena Vista Street	5317-011-026	Knox-Merwin-Porter House	1870	SFR	4X		CC 6620	July 19, 2000
43	909 Lyndon Street	5314-023-007	East Wynyate	1896	SFR	2S2		CC 6621	July 19, 2000
44	1114 Garfield Avenue	5324-012-032	Chouinard House	1907	SFR	5S1		CC 6622	July 19, 2000
45	815 Mission Street	5315-020-900	Municipe Plunge Building	1939	Community	5S1		CC 6623	July 19, 2000
46	1414 Fair Oaks Avenue	5320-005-023	Smith and Williams Building	1958	Commercial	5S1		CC 6763	November 19, 2003
47	323/335 Monterey Road	5311-012-010 5311-012-011	Burwood House	1910	SFR/ Commercial	5S3		CC 6858	January 18, 2006
48	919 Columbia Street	5317-006-004	Riggins House	1885	SFR	2S		CC 6859	January 18, 2006
49	800-802 Fair Oaks Avenue	5318-014-009	Fair Hope Building	1911	Commercial	5S1		CC 6910	December 20, 2006
50	1040 Stratford Avenue	5318-019-038	Huntzinger House	1910	SFR	4B		CC 6990	July 2, 2008
51	325 Monterey Road	5311-012-037	Fleet House	1947	SFR	5S1		CC 7051	May 20, 2009
52	209 Beacon Avenue	5317-006-001	Whitney R. Smith House and Studio	1907	SFR	4S2		CC 7155	April 20, 2011
53	1107 Buena Vista Street	5317-010-033	David M. Rabb Family Homestead	1910	SFR	4X		CC 7158	June 1, 2011
54	320 Grand Avenue	5317-040-008	Koebig House	1927	SFR	2B2			December 2, 2018
55	1115 El Centro Street	5315-007-901	Library Tree	1930	Ficus Tree				December 2, 2018

ATTACHMENT 11
Historic Aerials and Photographs of the Library Tree



VICINITY AERIAL

PARCELS



SUBJECT SITE



APPROXIMATE LOCATION
OF LIBRARY TREE

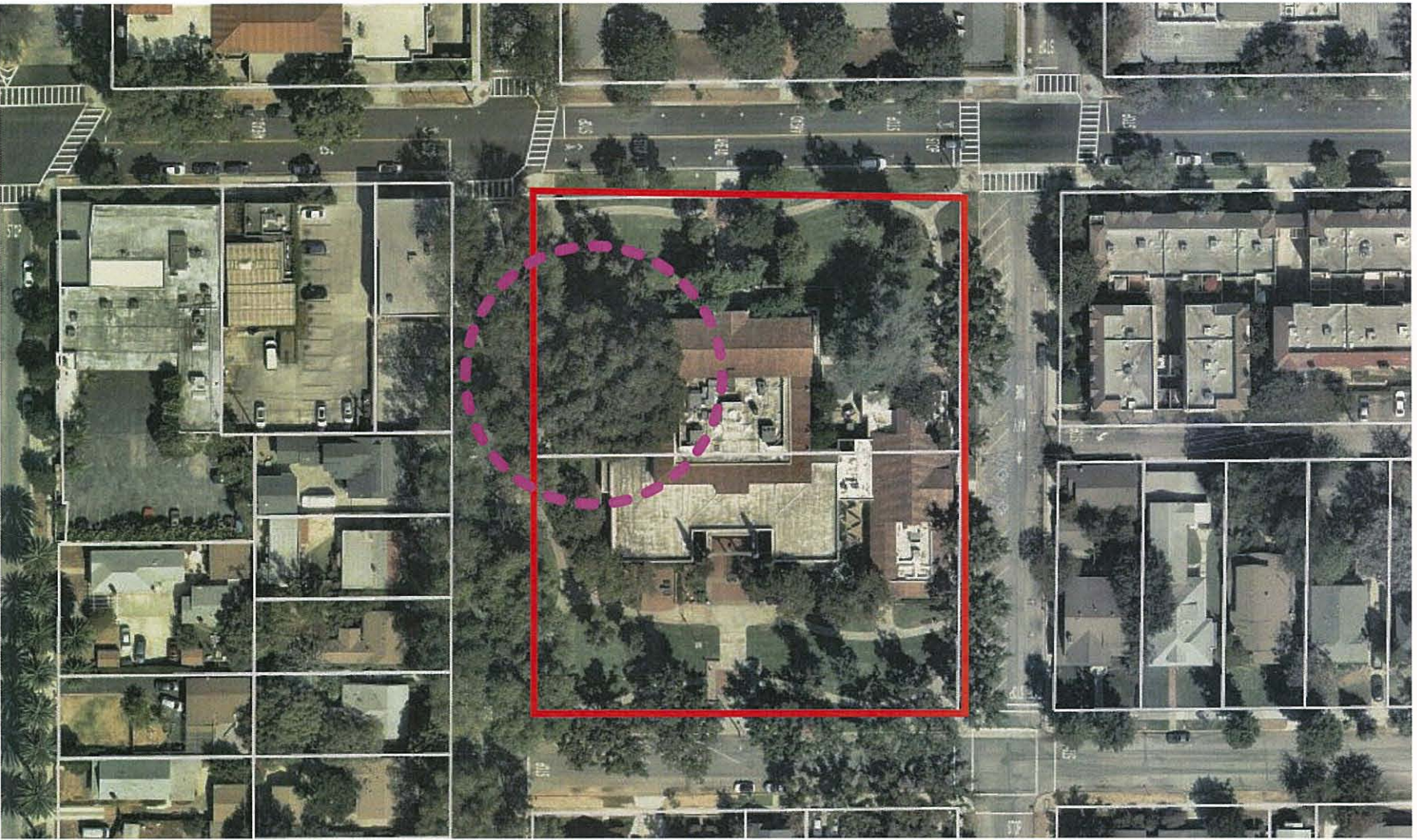


LEGEND

SOURCE: DIGITAL MAPS



FIGURE - 1: VICINITY AERIAL



PROXIMITY AERIAL

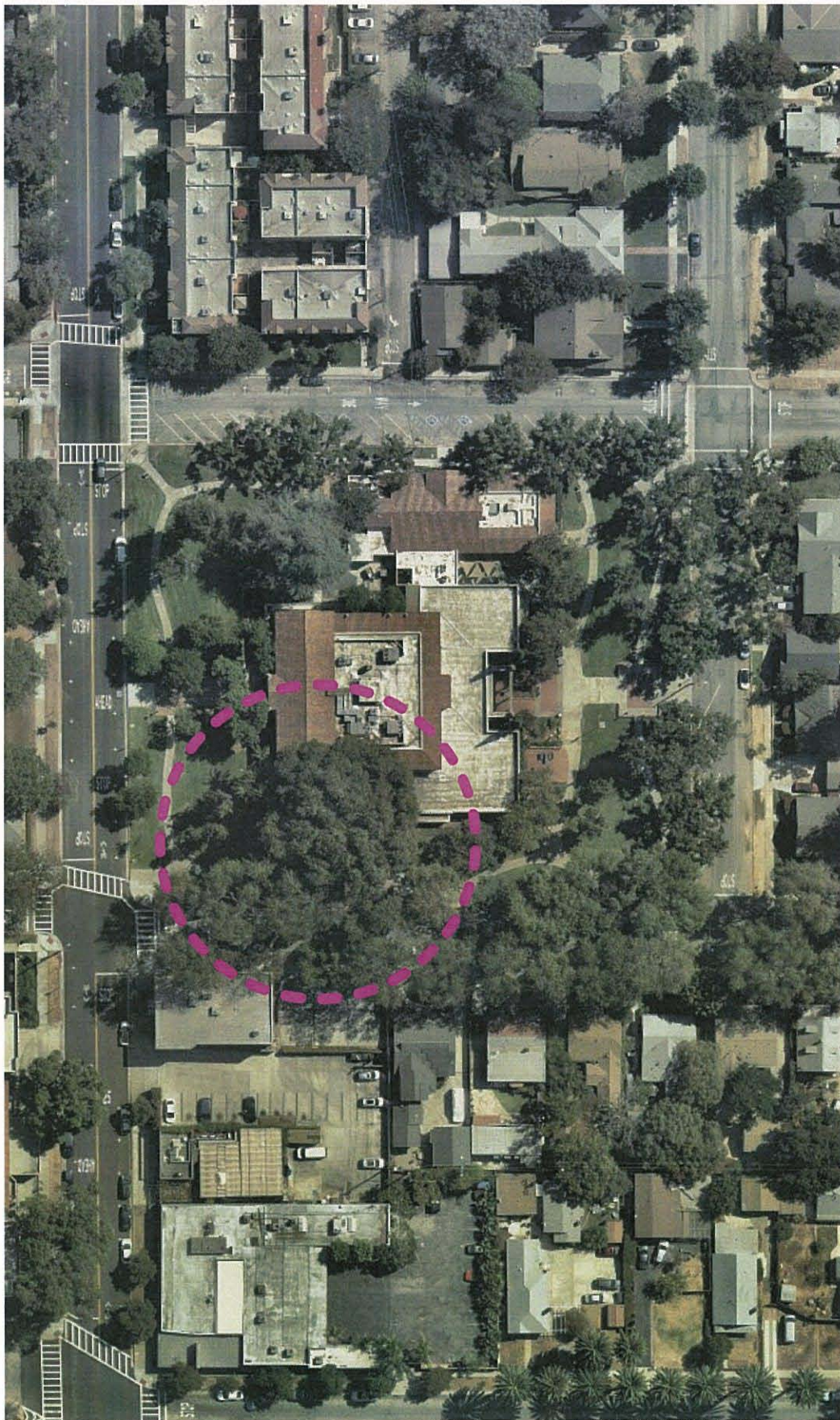
LEGEND

-  SUBJECT SITE
-  APPROXIMATE LOCATION OF LIBRARY TREE
-  PARCELS

FIGURE - 2: PROXIMITY AERIAL



SOURCE: DIGITAL MAPS



HIGH RESOLUTION AERIAL

APPROXIMATE LOCATION
OF LIBRARY TREE

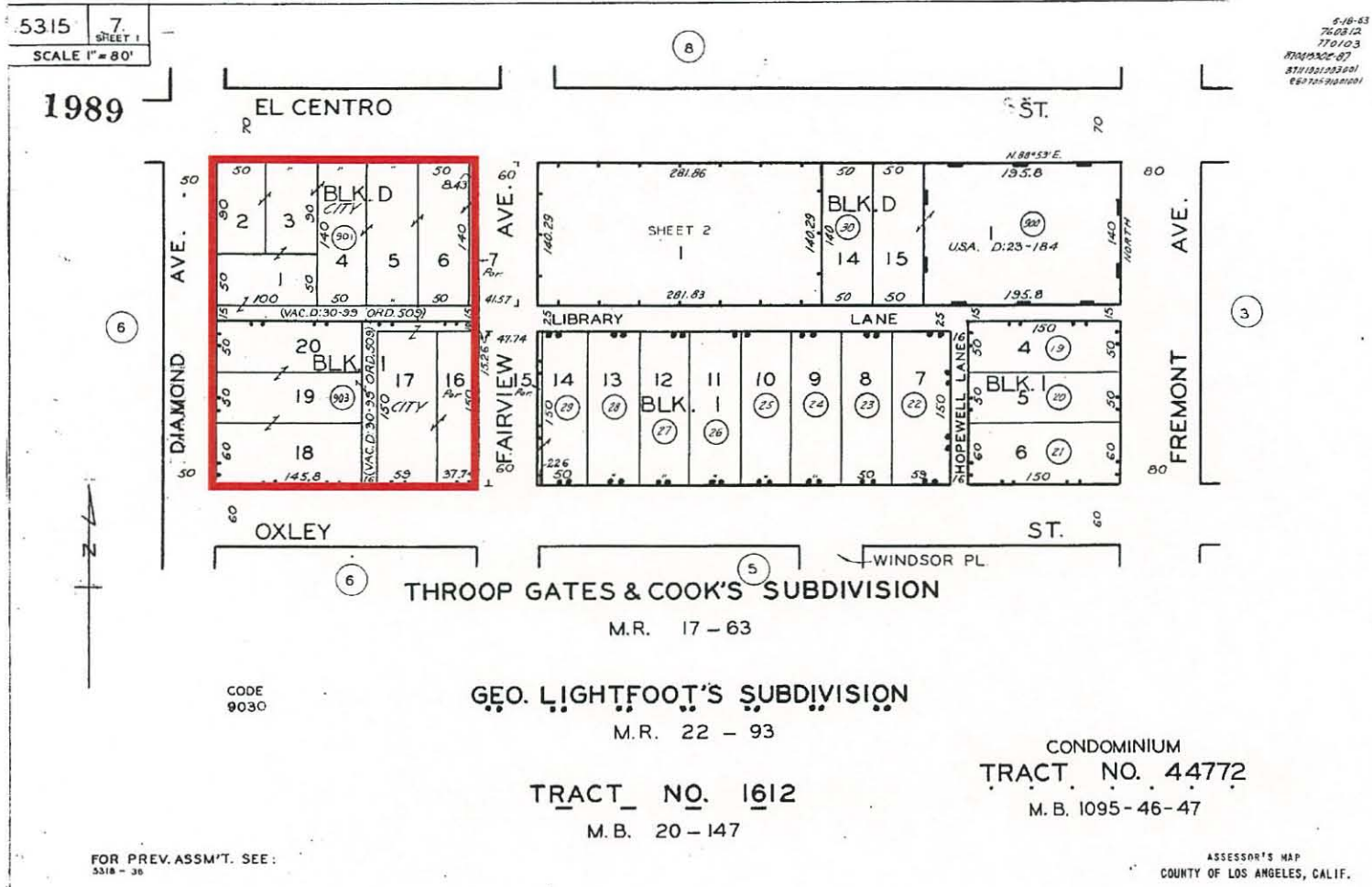


LEGEND



FIGURE - 3: HIGH RESOLUTION AERIAL

SOURCE: DIGITAL MAPS



ASSESSOR PARCEL MAP

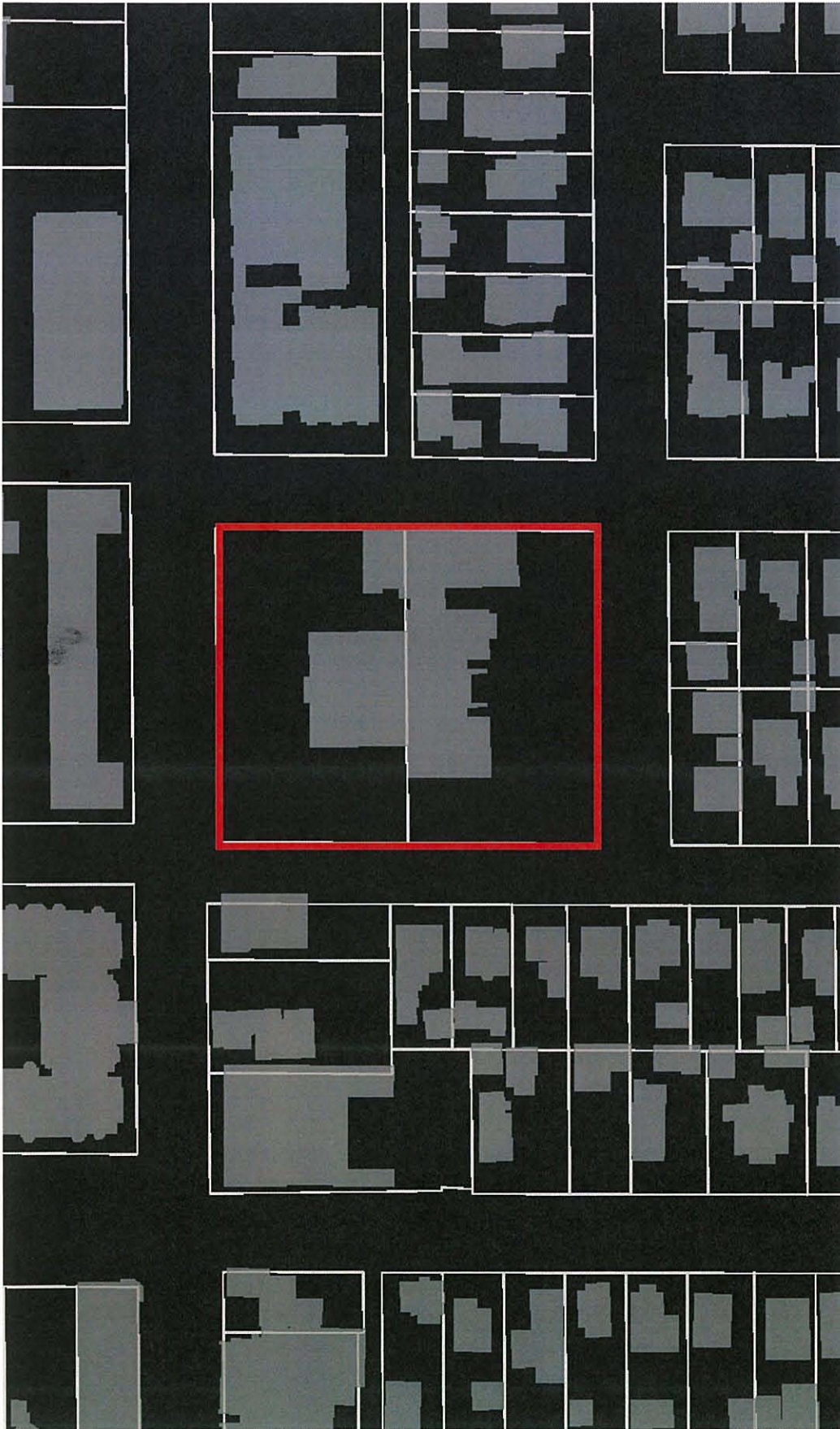
LEGEND

- SUBJECT SITE
- PARCELS

FIGURE - 4: ASSESSOR MAP



SOURCE: LA COUNTY ASSESSOR



BUILDING FOOTPRINTS - PROXIMITY

PARCELS



SUBJECT SITE



BUILDING FOOTPRINT



LEGEND

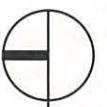
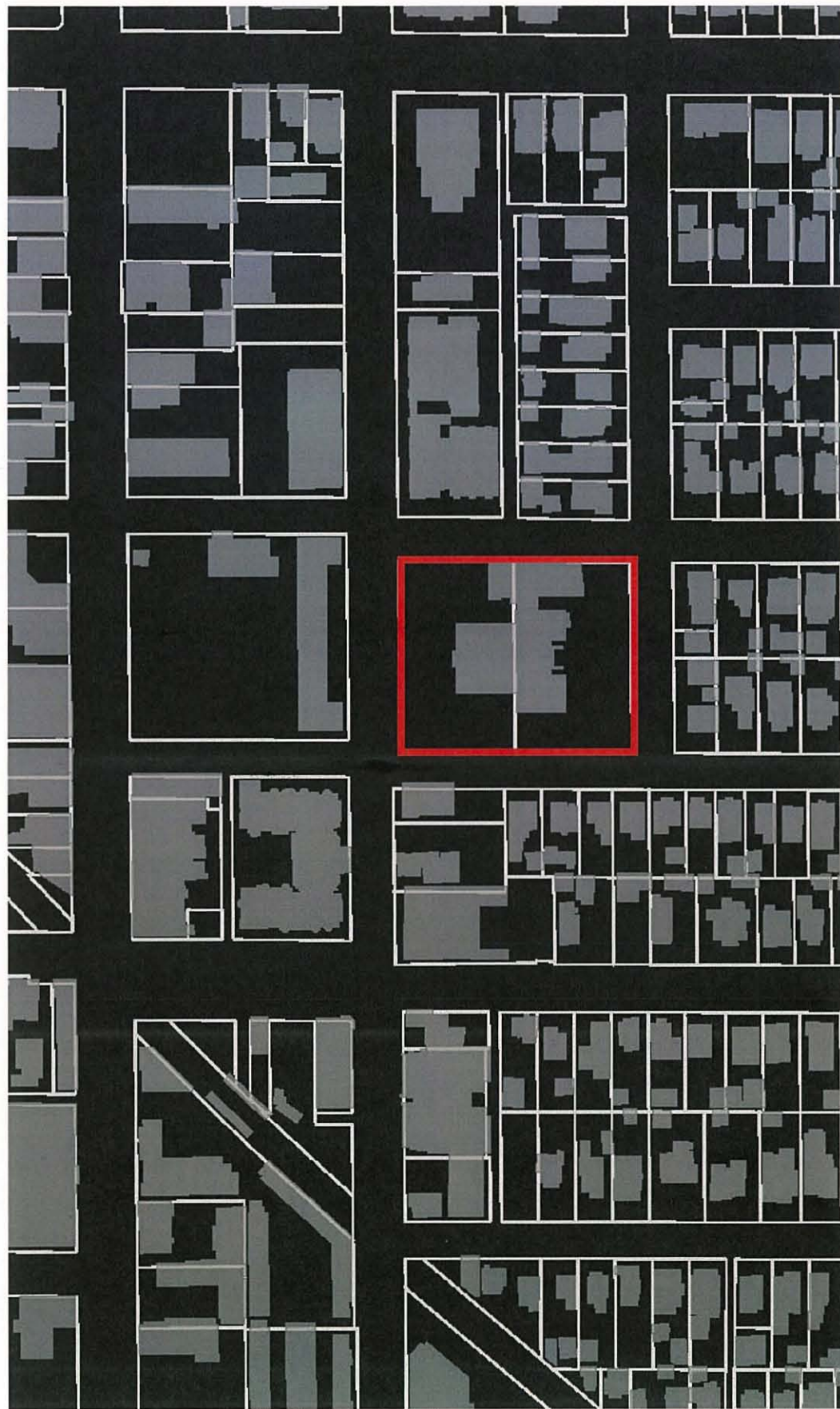


FIGURE - 5: FOOTPRINTS - PROXIMITY

SOURCE: DIGITAL MAPS



PARCELS



SUBJECT SITE



BUILDING FOOTPRINT

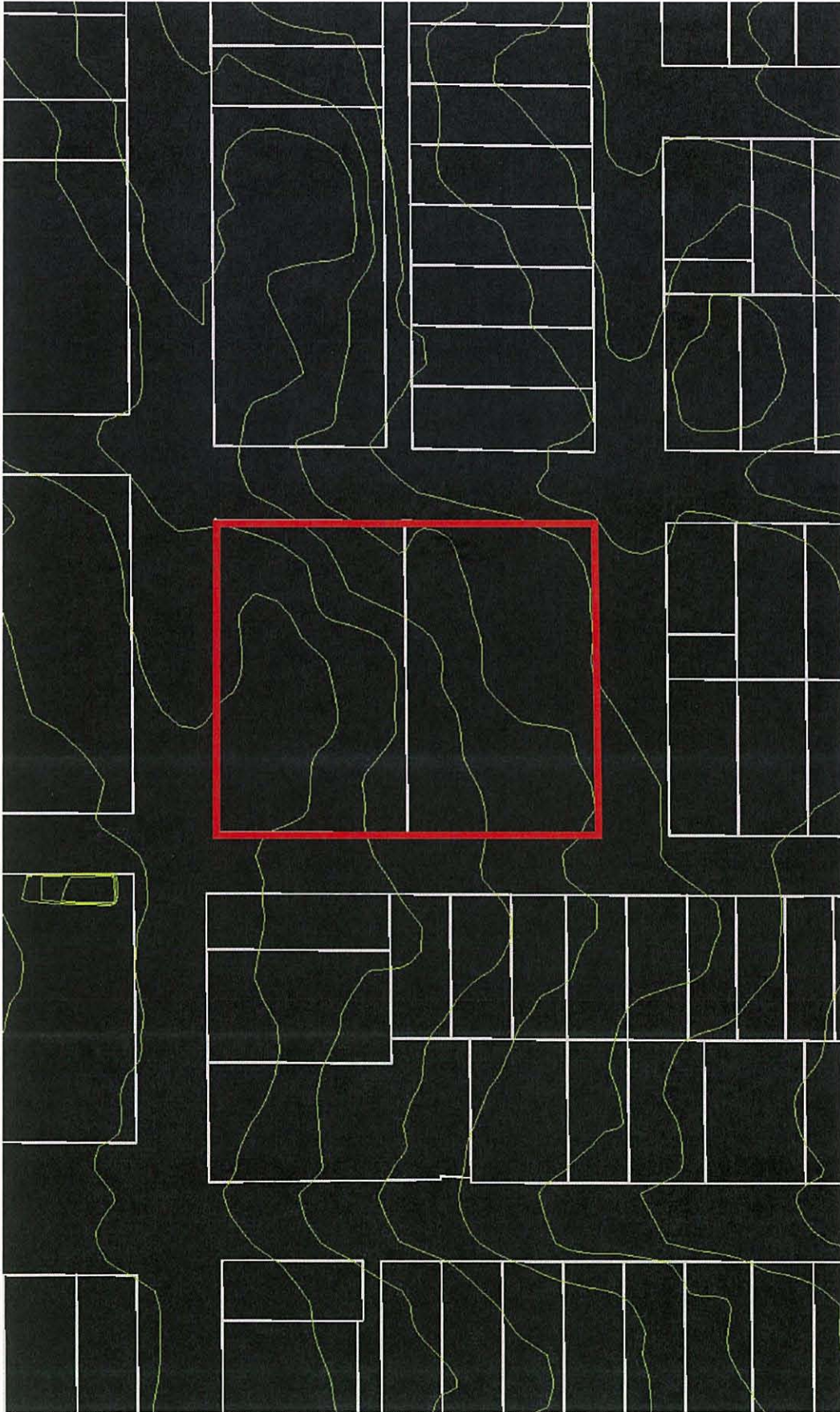


LEGEND



FIGURE - 6: FOOTPRINTS - VICINITY

SOURCE: DIGITAL MAPS



2 FOOT TOPOGRAPHIC MAP - PROXIMITY

PARCELS

SUBJECT SITE

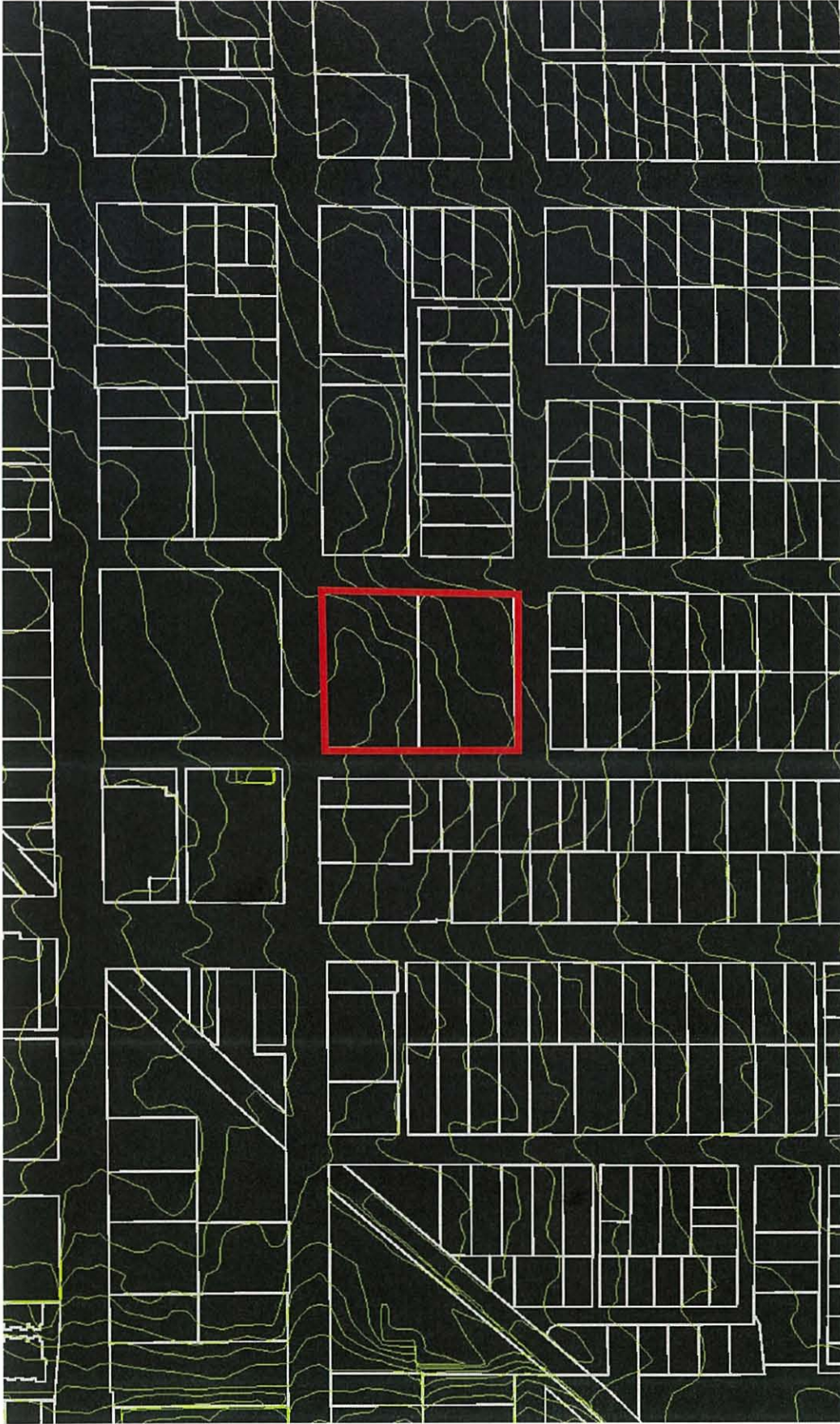


LEGEND



FIGURE - 7: 2 FOOT TOPO - PROXIMITY

SOURCE: DIGITAL MAPS



2 FOOT TOPOGRAPHIC MAP - VICINITY

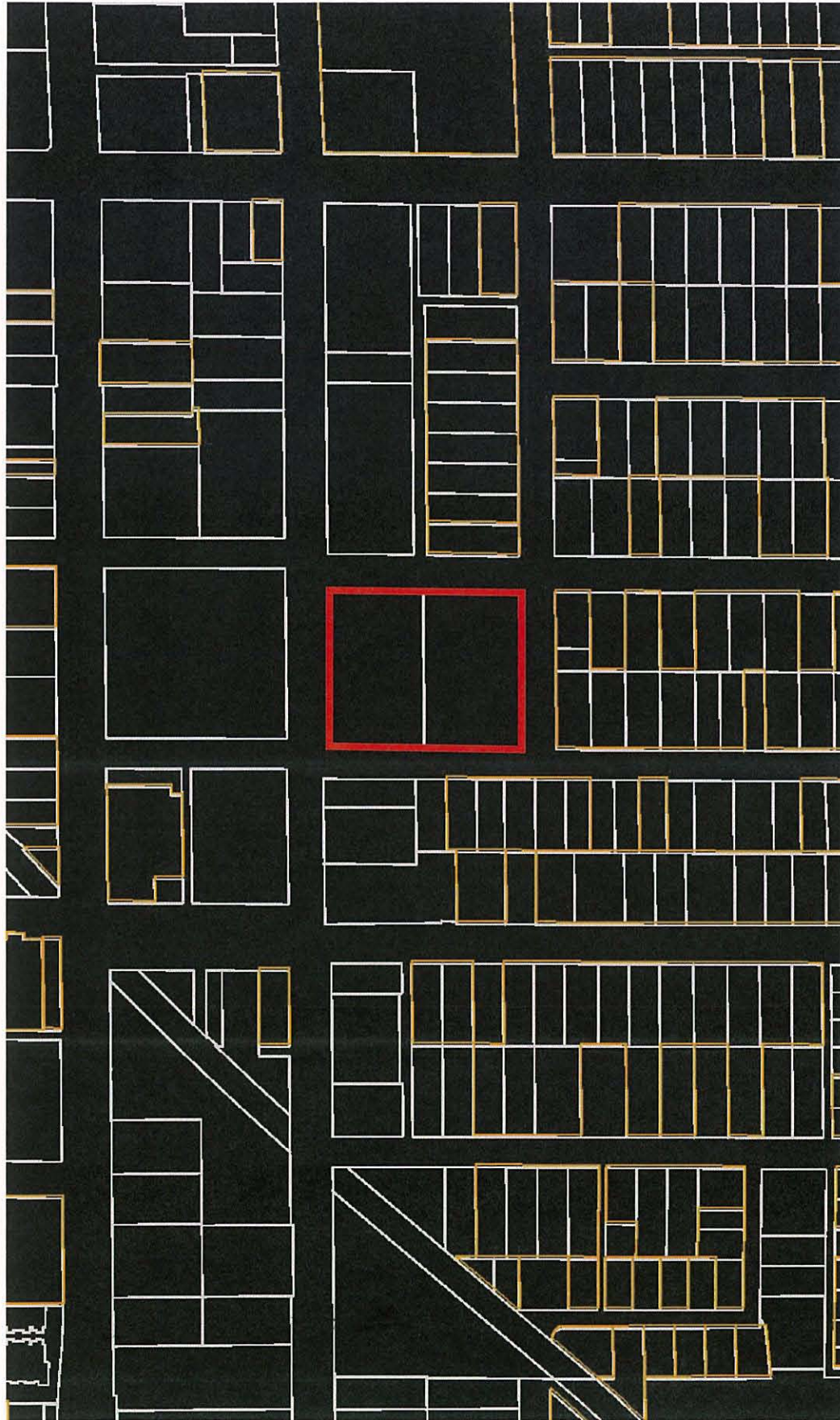
-  SUBJECT SITE
-  PARCELS

LEGEND



FIGURE - 8: 2 FOOT TOPO - VICINITY

SOURCE: DIGITAL MAPS



HISTORIC INVENTORY PROPERTIES

HISTORIC PROPERTIES



PARCELS



SUBJECT SITE



LEGEND

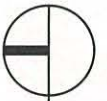


FIGURE - 9: HISTORIC PROPERTIES

SOURCE: DIGITAL MAPS



AERIAL SURVEY - 1937

SUBJECT SITE



APPROXIMATE LOCATION
OF LIBRARY TREE

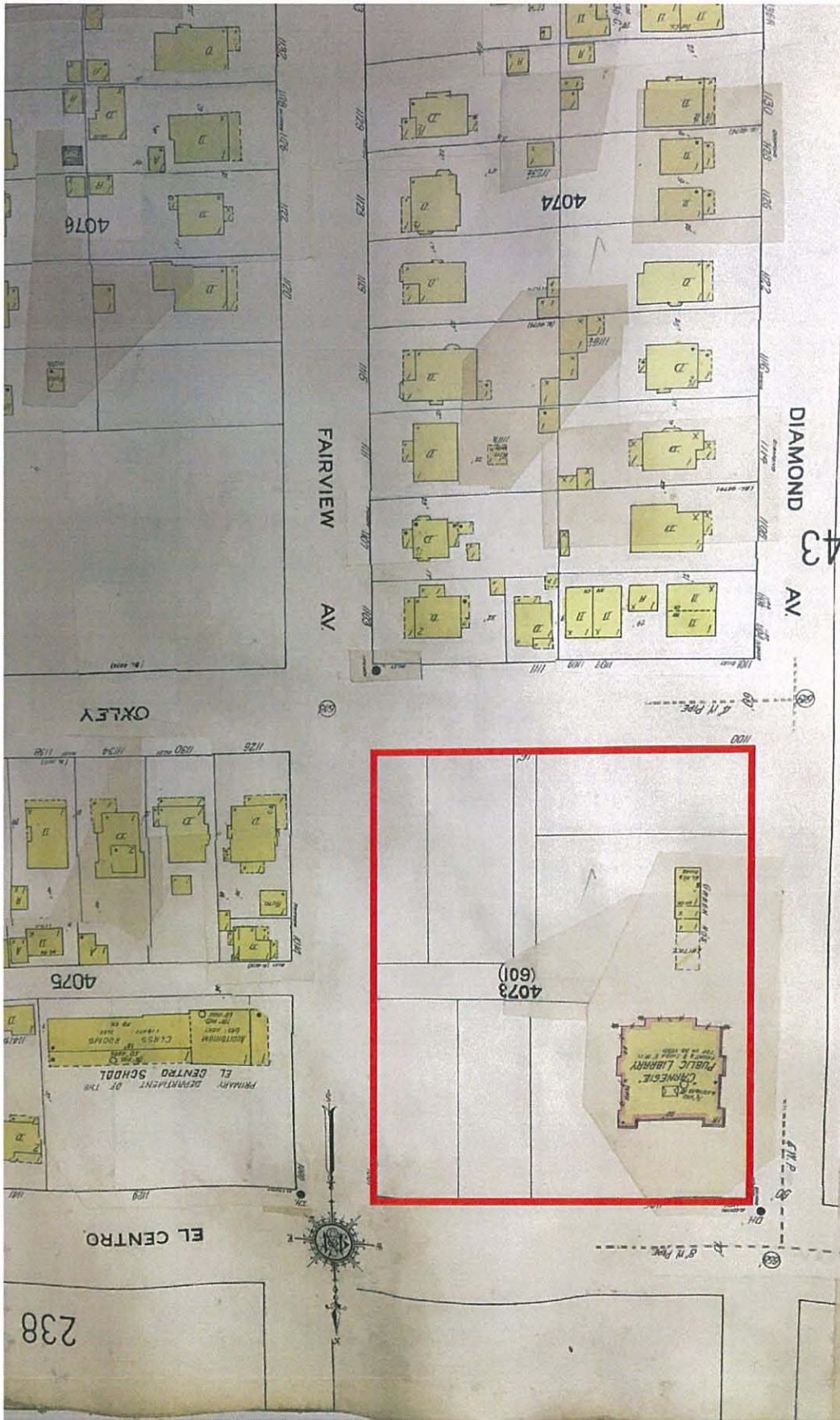


LEGEND



FIGURE - 10: AERIAL SURVEY (1937)

SOURCE: FAIRCHILD AERIAL SURVEY



SANBORN MAP - 1910

BUILDING FOOTPRINTS



PARCELS



SUBJECT SITE

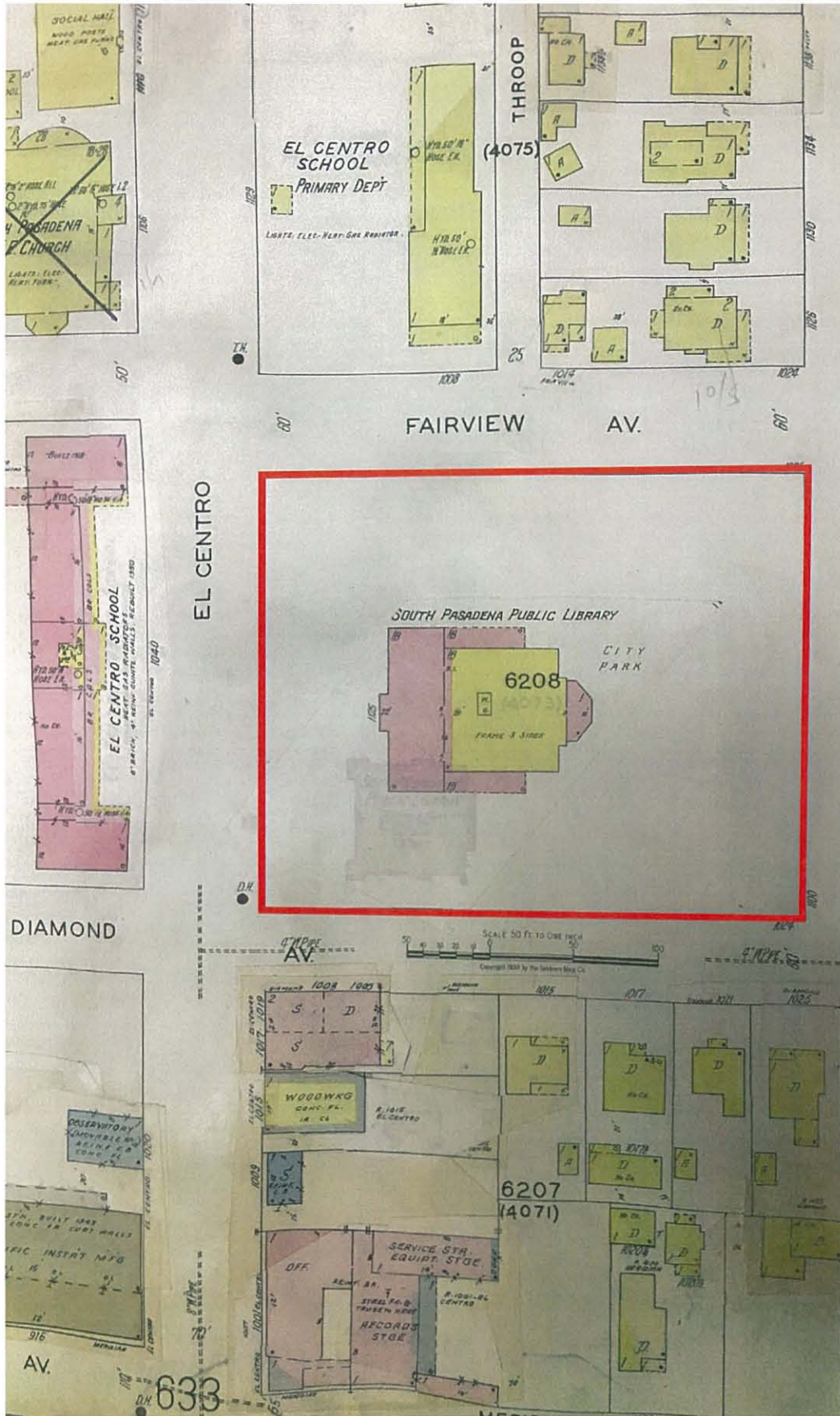


LEGEND

SOURCE: SANBORN FIRE INSURANCE



FIGURE - 11: SANBORN MAP (1910)



BUILDING FOOTPRINTS



PARCELS



SUBJECT SITE



LEGEND

SOURCE: SANBORN FIRE INSURANCE

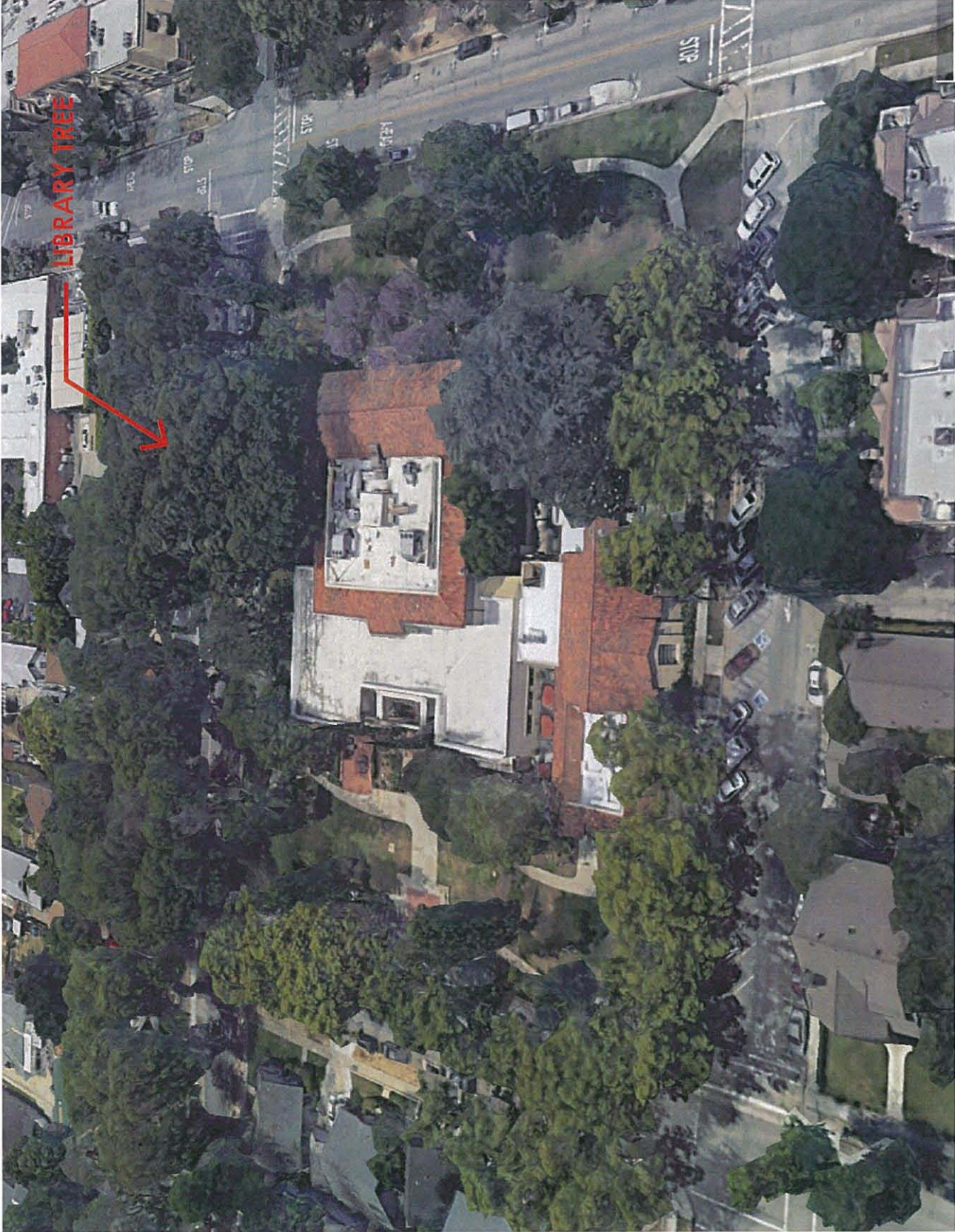


FIGURE - 12: SANBORN MAP (1930)



SOURCE: GOOGLE EARTH

FIGURE - 13: BIRDS EYE VIEW (LOOKING NORTH)



SOURCE: GOOGLE EARTH

FIGURE - 14: BIRDS EYE AERIAL (LOOKING WEST)



SOURCE: GOOGLE EARTH

FIGURE - 15: BIRDS EYE AERIAL (LOOKING SOUTH)



SOURCE: GOOGLE EARTH

FIGURE - 16: BIRDS EYE AERIAL (LOOKING EAST)



FIGURE - 17: PANORAMA (LOOKING NORTH)

SOURCE: PLANNING



FIGURE - 18: PANORMA (LOOKING SOUTH)

SOURCE: PLANNING



FIGURE - 19: PANORMA (LOOKING SOUTH)

SOURCE: PLANNING