

L1 AND L2 LEVEL WINDOWS: ARCADIA ALUMINUM STOREFRONT DOUBLE GLAZED LOW-E WINDOWS AND DOORS, TEMPERED ARE NOTED; L3 LEVEL WINDOWS: JELDWEN WOOD CLAD ALUMINUM WINDOWS, AND DOORS, DOUBLE GLAZED, LOW-E, TEMPERED ARE NOTED, WITH NAIL FIN
 HISTORIC BUILDING: REPAIR EXISTING WOOD FRAMED TEMPERED STOREFRONT, NEW GLAZING TO BE JELDWEN WOOD CLAD ALUMINUM WINDOWS, DOUBLE GLAZED, LOW-E, TEMPERED ARE NOTED

ID	S-1	S-2	S-3	S-4	S-5	S-6	S-7
SOUTH FACADES: EXTERIOR ELEVATIONS							
QUANTITY	3	2	26	34	3	18	10
ROUGH OPENING	8'-2" X 10'-9"	6'-2" X 7'-2"	4'-6" X 8'-3"	6'-2" X 5'-6"	8'-9" X 10'-1"	6'-2" X 4'-10"	4'-2" X 4'-10"
NOTES	FIXED, TEMPERED, MULLED	FIXED, CASEMENT, MULLED	FIXED, TEMPERED, WOOD FRAME	FIXED, CASEMENT, MULLED	FIXED, TEMPERED, WOOD FRAME	FIXED, CASEMENT, MULLED	FIXED, SLIDE

L1 AND L2 LEVEL WINDOWS: ARCADIA ALUMINUM STOREFRONT DOUBLE GLAZED LOW-E WINDOWS AND DOORS, TEMPERED ARE NOTED; L3 LEVEL WINDOWS: JELDWEN WOOD CLAD ALUMINUM WINDOWS, AND DOORS, DOUBLE GLAZED, LOW-E, TEMPERED ARE NOTED, WITH NAIL FIN
 HISTORIC BUILDING: REPAIR EXISTING WOOD FRAMED TEMPERED STOREFRONT, NEW GLAZING TO BE JELDWEN WOOD CLAD ALUMINUM WINDOWS, DOUBLE GLAZED, LOW-E, TEMPERED ARE NOTED

ID	E-1	E-2	E-3	E-4	E-5	E-6
EAST FACADES: EXTERIOR ELEVATIONS						
QUANTITY	6	7	20	4	1	2
ROUGH OPENING	8'-2" X 5'-6"	5'-2" X 8'-2"	2'-2" X 4'-8"	2'-2" X 5'-6"	18'-9" X 10'-7"	4'-4" X 8'-0"
NOTES	FIXED, CASEMENT, MULLED	FIXED WOOD FRAME, SLIDER	FIXED	FIXED	FIXED, TEMPERED, WOOD FRAME	FIXED, TEMPERED

L1 AND L2 LEVEL WINDOWS: ARCADIA ALUMINUM STOREFRONT DOUBLE GLAZED LOW-E WINDOWS AND DOORS, TEMPERED ARE NOTED; L3 LEVEL WINDOWS: JELDWEN WOOD CLAD ALUMINUM WINDOWS, AND DOORS, DOUBLE GLAZED, LOW-E, TEMPERED ARE NOTED, WITH NAIL FIN
 HISTORIC BUILDING: REPAIR EXISTING WOOD FRAMED TEMPERED STOREFRONT, NEW GLAZING TO BE JELDWEN WOOD CLAD ALUMINUM WINDOWS, DOUBLE GLAZED, LOW-E, TEMPERED ARE NOTED

ID	E-7	E-8	E-9	E-10	E-11			
EAST FACADE: EXTERIOR ELEVATIONS								
QUANTITY	1	2	1	1	1	QUANTITY		
ROUGH OPENING	3'-6" X 18'-9.5"	7'-10" X 19'-0"	10'-3" X 8'-3"	1'-11" X 2'-11"	3'-4" X 6'-10"	ROUGH OPENING	18'-9	
NOTES	FIXED, TEMPERED, MULLED	FIXED, TEMPERED, MULLED	FIXED, GRILLWORK, METAL PANEL	SINGLE HUNG	REPURPOSED DOOR	NOTES	FIXED, DOUBLE DOORS, ME	

L1 AND L2 LEVEL WINDOWS: ARCADIA ALUMINUM STOREFRONT DOUBLE GLAZED LOW-E WINDOWS AND DOORS, TEMPERED ARE NOTED; L3 LEVEL WINDOWS: JELDWEN WOOD CLAD ALUMINUM WINDOWS, AND DOORS, DOUBLE GLAZED, LOW-E, TEMPERED ARE NOTED, WITH NAIL FIN
 HISTORIC BUILDING: REPAIR EXISTING WOOD FRAMED TEMPERED STOREFRONT, NEW GLAZING TO BE JELDWEN WOOD CLAD ALUMINUM WINDOWS, DOUBLE GLAZED, LOW-E, TEMPERED ARE NOTED

ID	N-2	N-3	N-4	N-5	N-6	N-7
NORTH FACADE: EXTERIOR ELEVATIONS						
QUANTITY	1	4	2	4	19	2
ROUGH OPENING	17'-5" X 8'-1"	8'-2" X 4'-8"	8'-2" X 4'-8"	8'-2" X 8'-0"	8'-2" X 8'-1"	EXISTING
NOTES	FIXED, TEMPERED, MULLED	FIXED, CASEMENT, MULLED	FIXED, TEMPERED, MULLED	FIXED, TEMPERED, CASEMENT, MULLED	FIXED, TEMPERED, MULLED, DBL DOORS	SINGLE HUNG

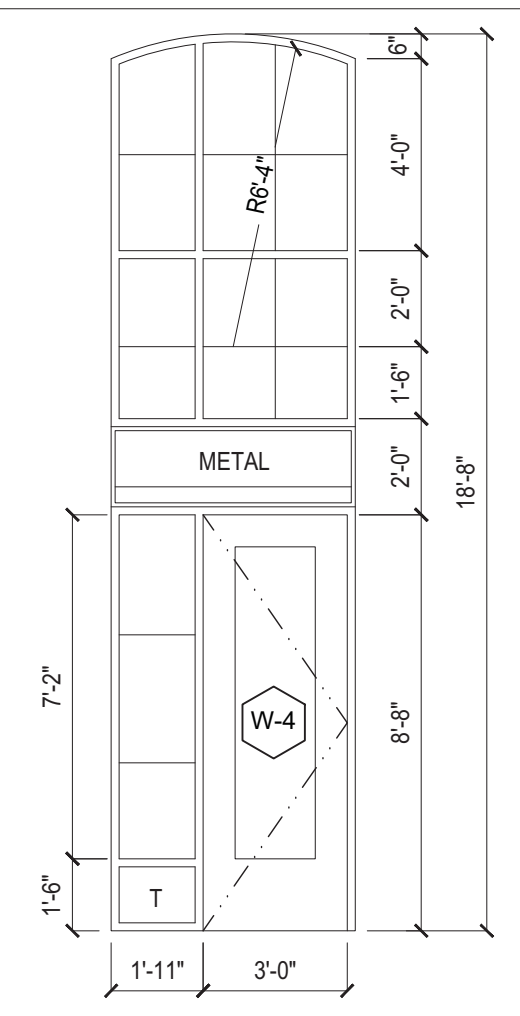
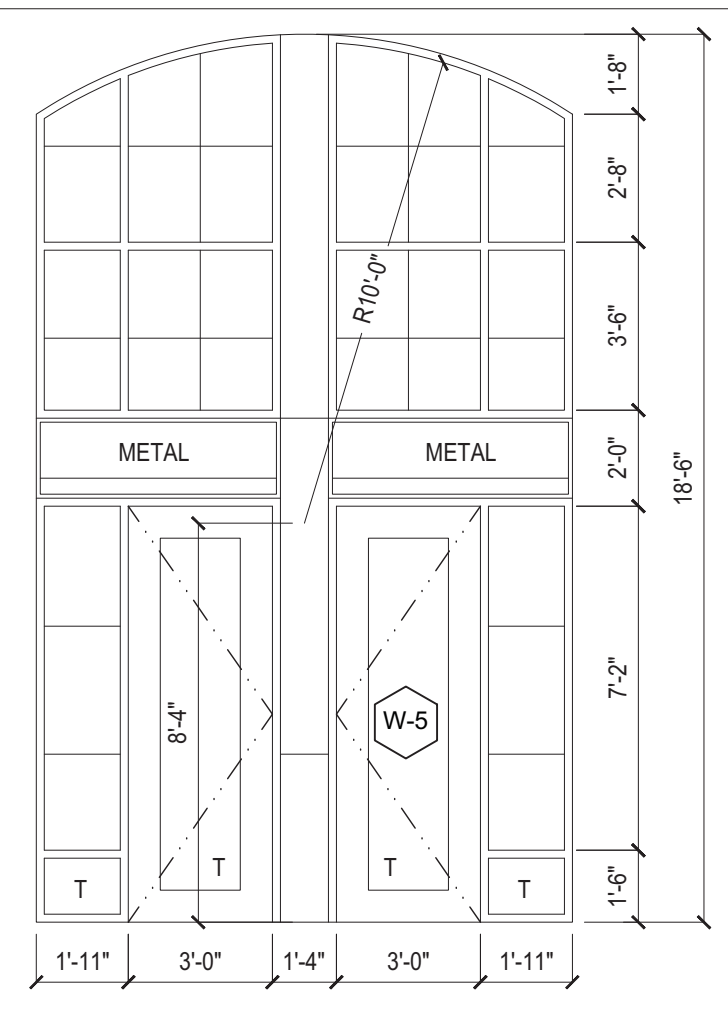
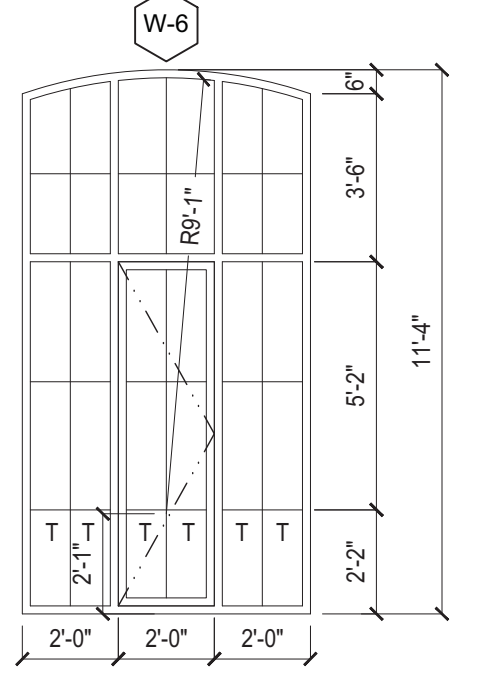
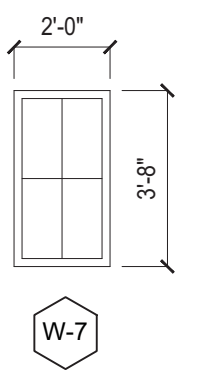
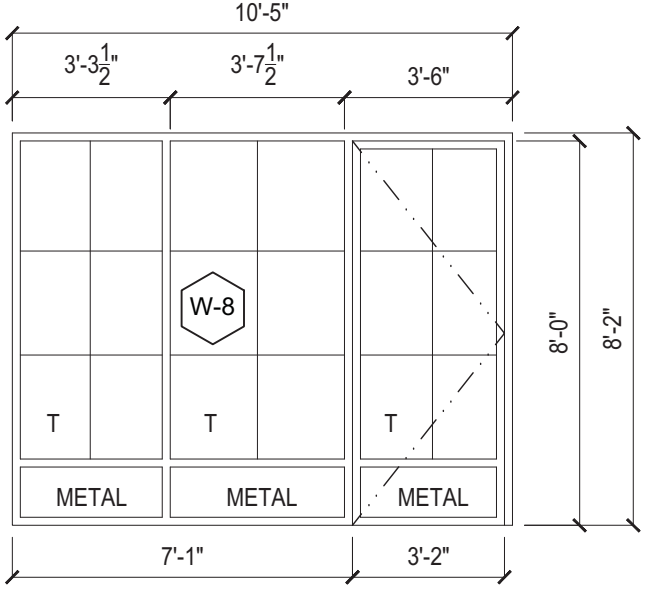
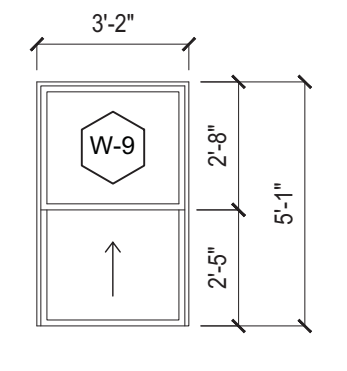
L1 AND L2 LEVEL WINDOWS: ARCADIA ALUMINUM STOREFRONT DOUBLE GLAZED LOW-E WINDOWS AND DOORS, TEMPERED ARE NOTED; L3 LEVEL WINDOWS: JELDWEN WOOD CLAD ALUMINUM WINDOWS, AND DOORS, DOUBLE GLAZED, LOW-E, TEMPERED ARE NOTED, WITH NAIL FIN
 HISTORIC BUILDING: REPAIR EXISTING WOOD FRAMED TEMPERED STOREFRONT, NEW GLAZING TO BE JELDWEN WOOD CLAD ALUMINUM WINDOWS, DOUBLE GLAZED, LOW-E, TEMPERED ARE NOTED

ID	N-8	N-9	N-10	N-11
NORTH FACADE: EXTERIOR ELEVATIONS				
QUANTITY	1	1	1	1
ROUGH OPENING	EXISTING	EXISTING	15'-3" X 10'-7"	27'-6" X 10'-7"
NOTES	REPAIR AND REFURBISH EXISTING WOOD STOREFRONT	REPAIR AND REFURBISH EXISTING WOOD STOREFRONT	FIXED, MULLED, WOOD FRAME	FIXED, MULLED, WOOD FRAI

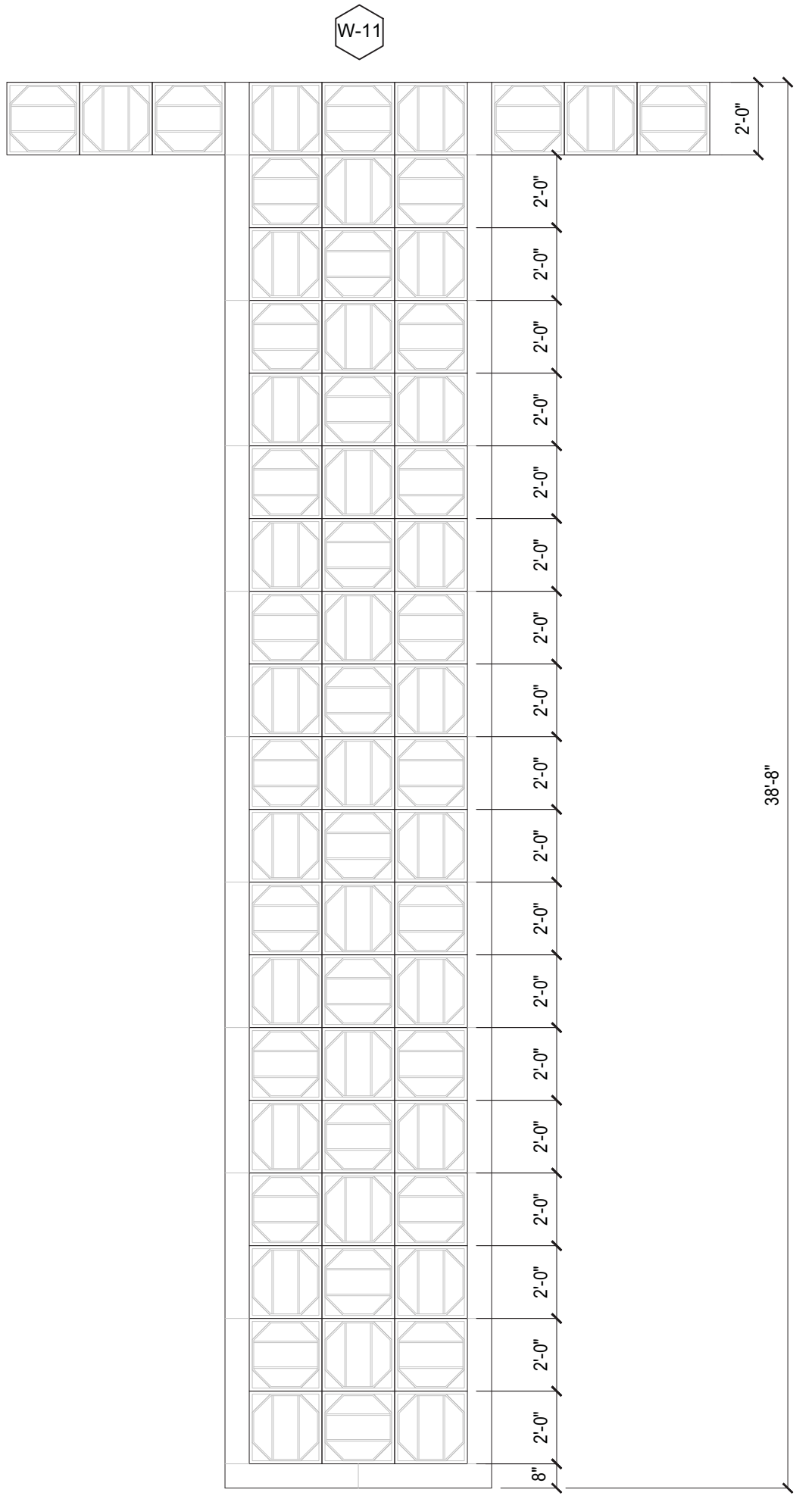
L1 AND L2 LEVEL WINDOWS: ARCADIA ALUMINUM STOREFRONT DOUBLE GLAZED LOW-E WINDOWS AND DOORS, TEMPERED ARE NOTED; L3 LEVEL WINDOWS: JELDWEN WOOD CLAD ALUMINUM WINDOWS, AND DOORS, DOUBLE GLAZED, LOW-E, TEMPERED ARE NOTED, WITH NAIL FIN
 HISTORIC BUILDING: REPAIR EXISTING WOOD FRAMED TEMPERED STOREFRONT, NEW GLAZING TO BE JELDWEN WOOD CLAD ALUMINUM WINDOWS, DOUBLE GLAZED, LOW-E, TEMPERED ARE NOTED

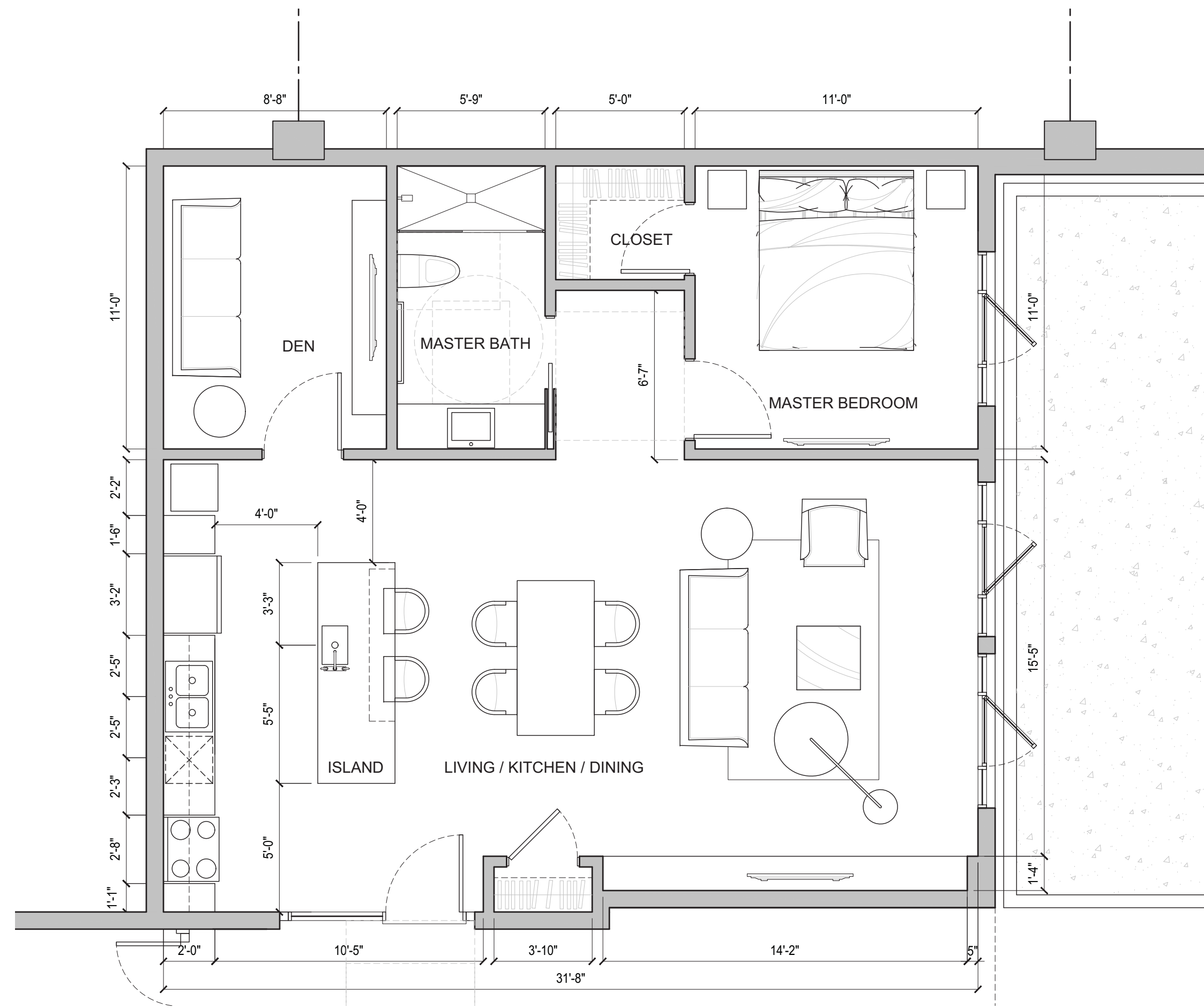
ID	N-12	N-13	ID	W-1	W-2
NORTH FACADE: EXTERIOR ELEVATIONS			WEST FACADE: EXTERIOR ELEVATIONS		
QUANTITY	1	29	QUANTITY	1	1
ROUGH OPENING	28'-0" X 10'-7"	4'-8" X 8'-3"	ROUGH OPENING	7'-0" X 13'-0.5"	6'-2" X 11'-1"
NOTES	FIXED, MULLED	TYP. ENTRY DOOR, FIXED, TEMPERED	NOTES 20-ATT 9 -40	ALCOVE DOORS, STEEL PANELS	FIXED, STEEL FRAME W/ MESH INFILL

L1 AND L2 LEVEL WINDOWS: ARCADIA ALUMINUM STOREFRONT DOUBLE GLAZED LOW-E WINDOWS AND DOORS, TEMPERED ARE NOTED; L3 LEVEL WINDOWS: JELDWEN WOOD CLAD ALUMINUM WINDOWS, AND DOORS, DOUBLE GLAZED, LOW-E, TEMPERED ARE NOTED, WITH NAIL FIN
 HISTORIC BUILDING: REPAIR EXISTING WOOD FRAMED TEMPERED STOREFRONT, NEW GLAZING TO BE JELDWEN WOOD CLAD ALUMINUM WINDOWS, DOUBLE GLAZED, LOW-E, TEMPERED ARE NOTED

ID	W-4	W-5	W-6	W-7	W-8	W-9
WEST FACADE: EXTERIOR ELEVATIONS						
QUANTITY	1	2	5	5	1	3
ROUGH OPENING	5'-3" X 18'-9"	11'-4" X 18'-7"	6'-2" X 11'-6"	2'-2" X 3'-10"	11'-4" X 18'-7"	3'-4" X 5'-3"
NOTES	FIXED, TEMPERED, MULLED	FIXED, TEMPERED, MULLED	FIXED, TEMPERED, MULLED CASEMENT	FIXED, MULLED	FIXED, TEMPERED, METAL PANEL	SINGLE HUNG

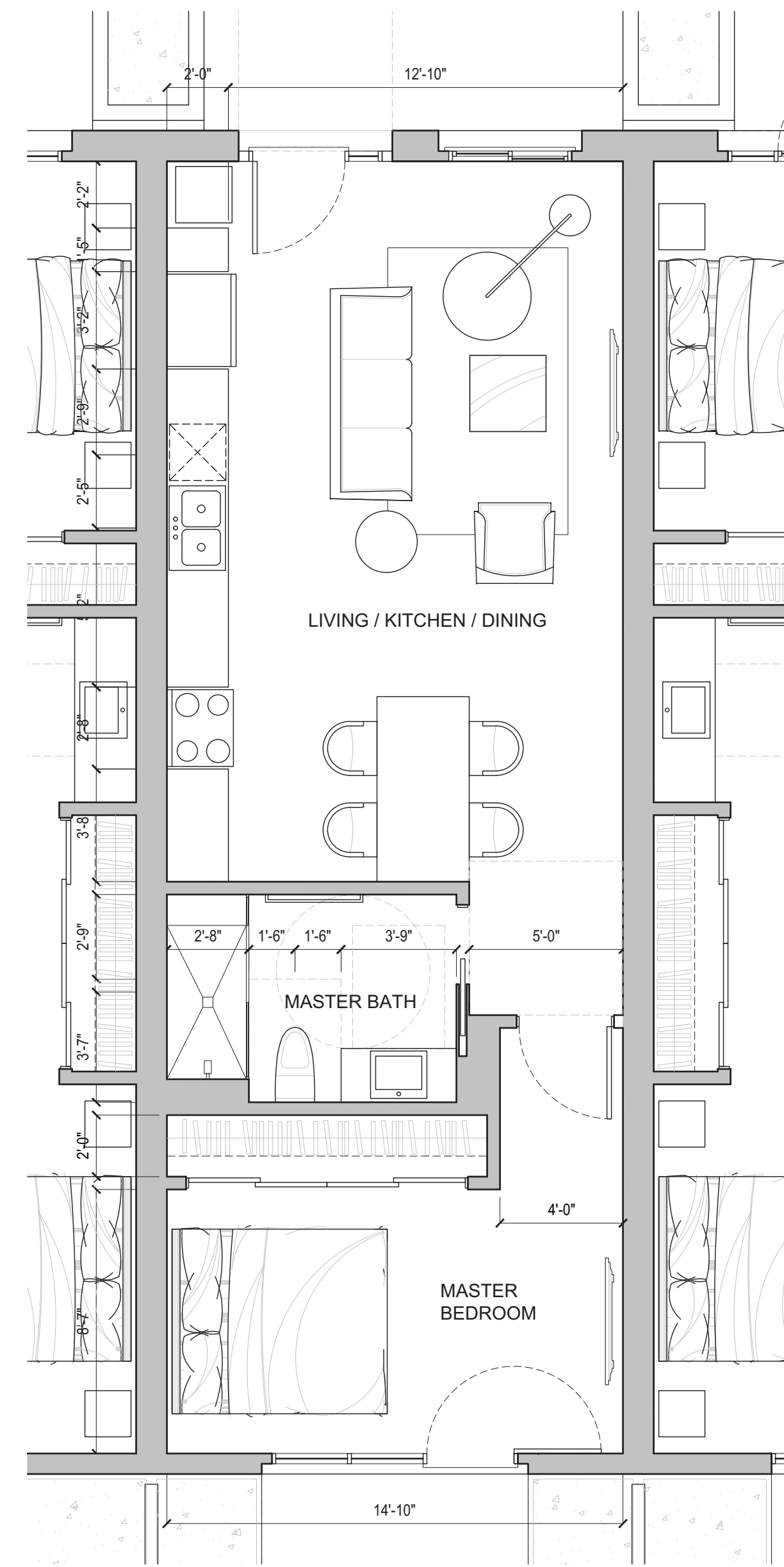
L1 AND L2 LEVEL WINDOWS: ARCADIA ALUMINUM STOREFRONT DOUBLE GLAZED LOW-E WINDOWS AND DOORS, TEMPERED ARE NOTED; L3 LEVEL WINDOWS: JELDWEN WOOD CLAD ALUMINUM WINDOWS, AND DOORS, DOUBLE GLAZED, LOW-E, TEMPERED ARE NOTED, WITH NAIL FIN
 HISTORIC BUILDING: REPAIR EXISTING WOOD FRAMED TEMPERED STOREFRONT, NEW GLAZING TO BE JELDWEN WOOD CLAD ALUMINUM WINDOWS, DOUBLE GLAZED, LOW-E, TEMPERED ARE NOTED

ID	W-11
WEST FACADE: EXTERIOR ELEVATIONS	
QUANTITY	1
ROUGH OPENING	19'-2" X 46'-2"
NOTES	FIXED, DIE CUT METAL PANELS, WOOD FRAME



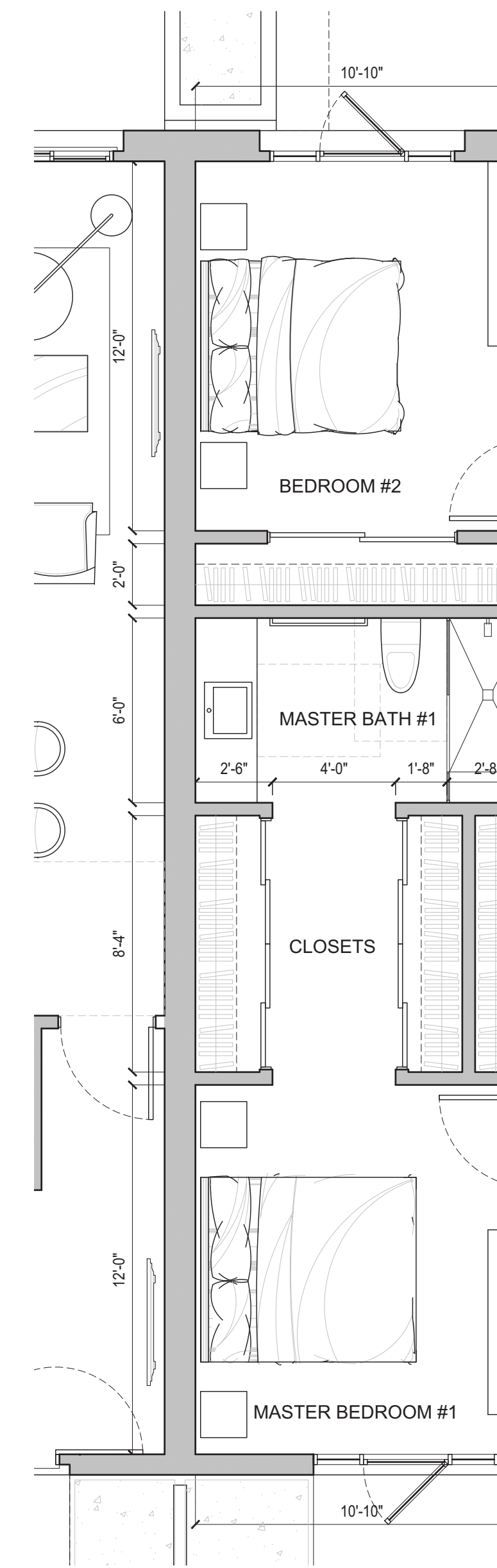
UNIT TYPE C 905 SF (INCLUDING INTERIOR WALLS)

scale: 1/4" = 1'-0" 0' 1' 2' 4'



UNIT TYPE B (UNITS F, N, S SIMILAR) 623 SF (INCLUDING INTERIOR WALLS)

scale: 1/4" = 1'-0" 0' 1' 2' 4'



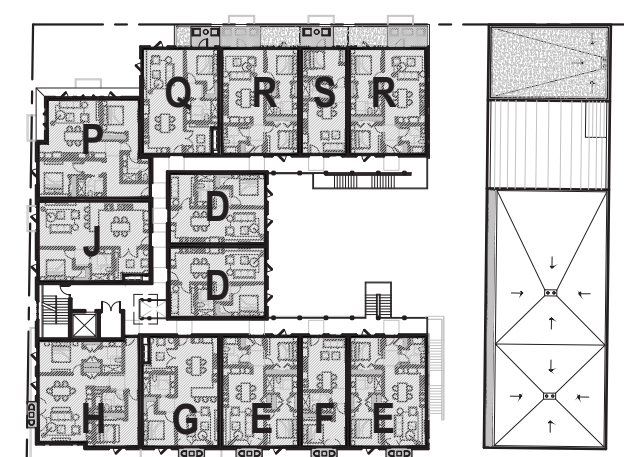
UNIT TYPE A (UNITS E, M, R SIMILAR) 1

scale: 1/4" = 1'-0" 0' 1' 2' 4'

PROJECT UNIT MIX

UNIT A:	2	UNIT L:	1
UNIT B:	1	UNIT M:	2
UNIT C:	1	UNIT N:	1
UNIT D:	4	UNIT O:	1
UNIT E:	4	UNIT P:	1
UNIT F:	2	UNIT Q:	1
UNIT G:	2	UNIT R:	2
UNIT H:	2	UNIT S:	1
UNIT J:	2	LOFT:	5
UNIT K:	1	TOTAL	36

THIRD FLOOR UNIT KEYPLAN

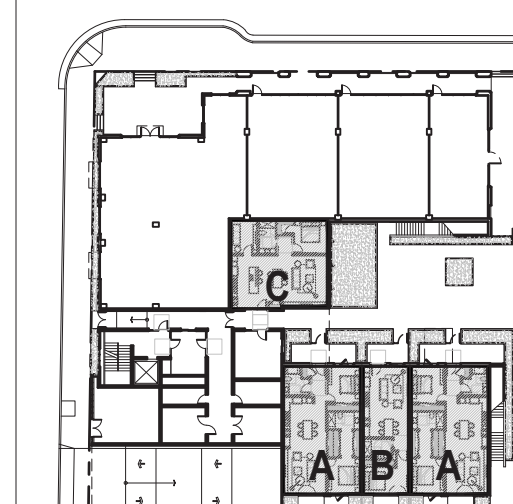


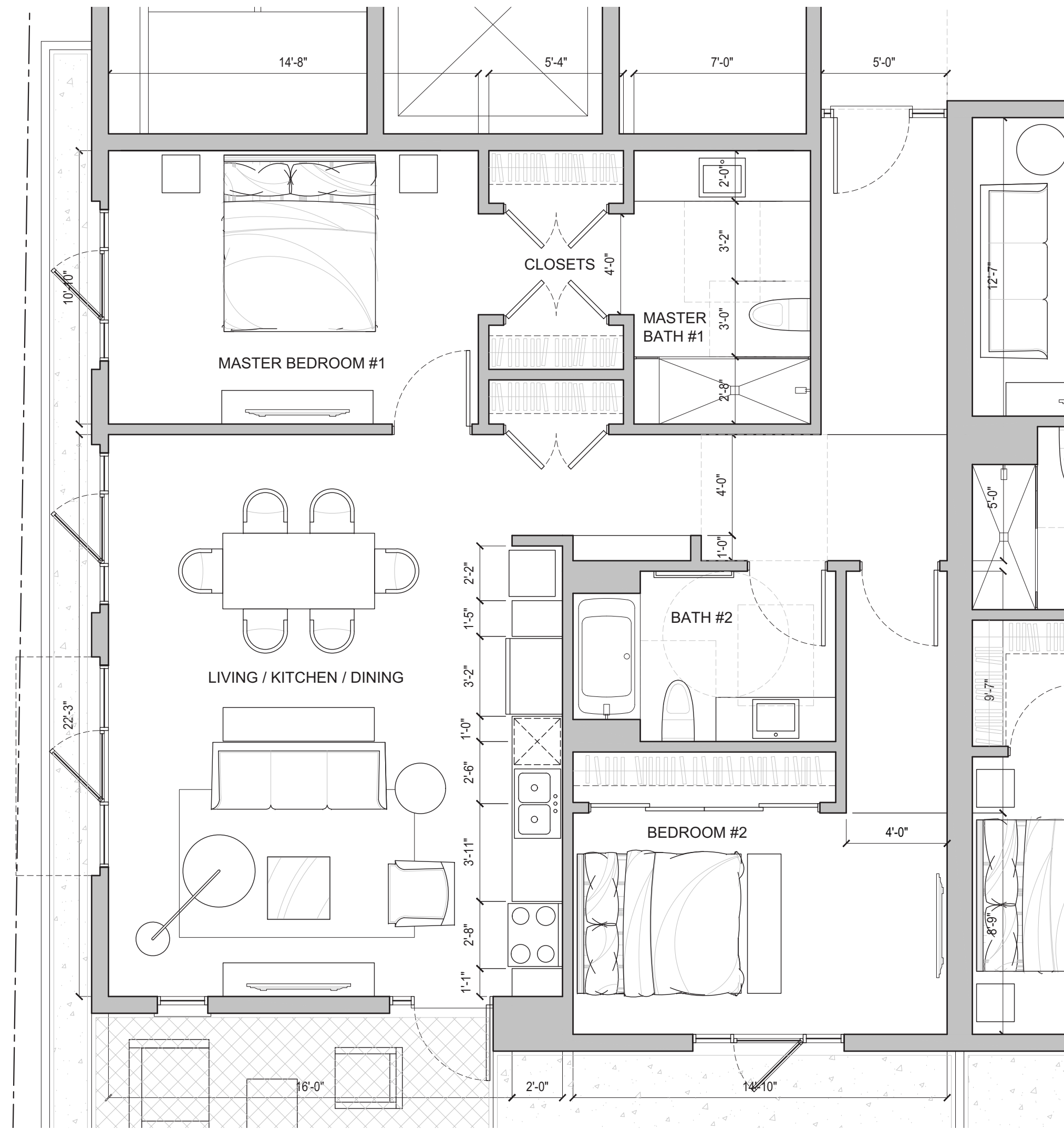
20-ATT 9-42

SECOND FLOOR UNIT KEYPLAN

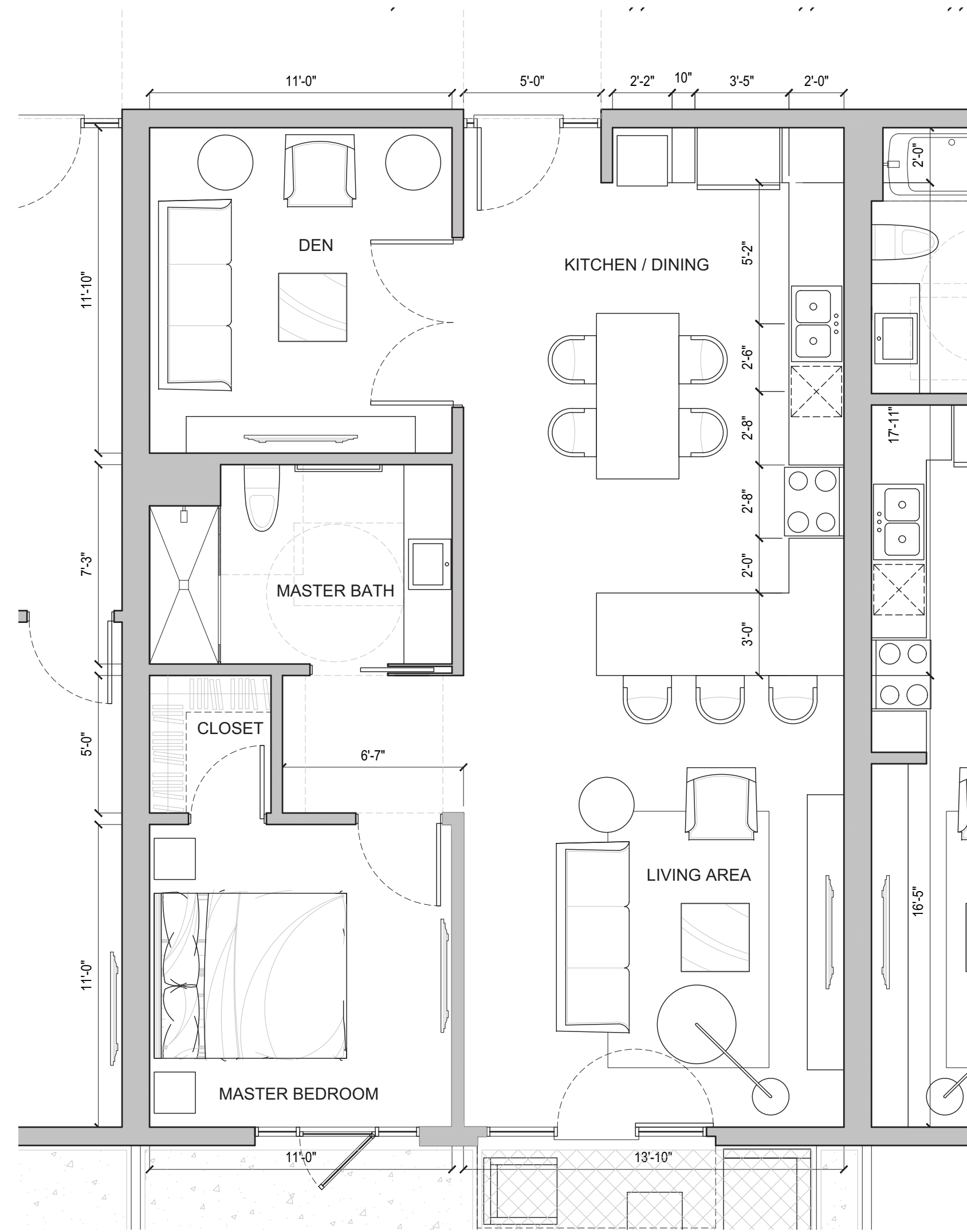


GROUND FLOOR UNIT KEYPLAN

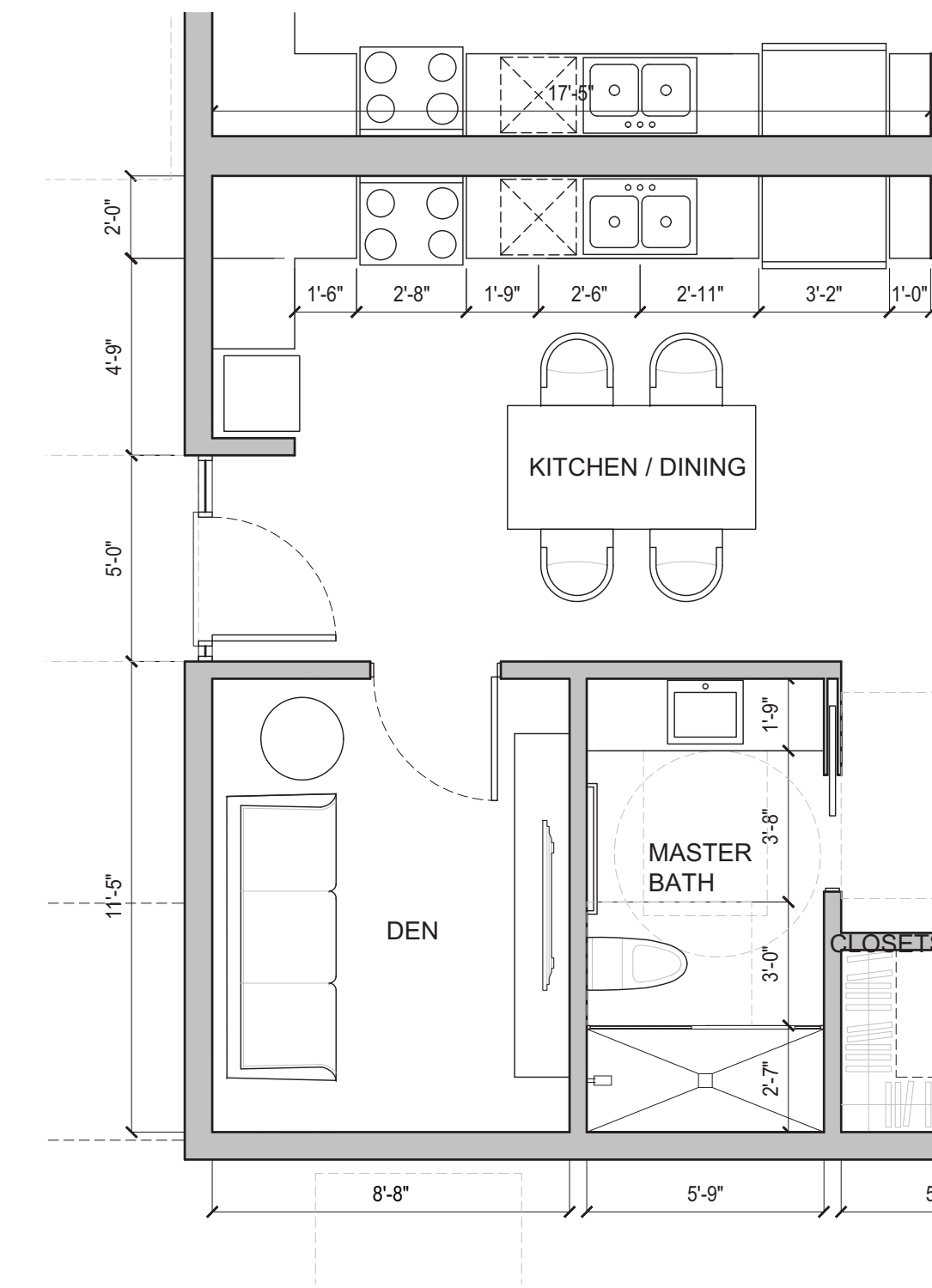




UNIT TYPE H 1,143 SF (INCLUDING INTERIOR WALLS)
 scale: 1/4" = 1'-0" 0' 1' 2' 4'



UNIT TYPE G 898 SF (INCLUDING INTERIOR WALLS)
 scale: 1/4" = 1'-0" 0' 1' 2' 4'

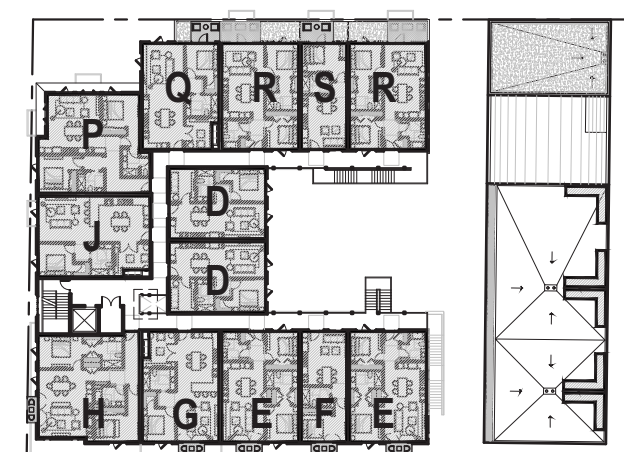


UNIT TYPE D 734 SF (INCLUDING INTERIOR WALLS)
 scale: 1/4" = 1'-0" 0' 1' 2' 4'

PROJECT UNIT MIX

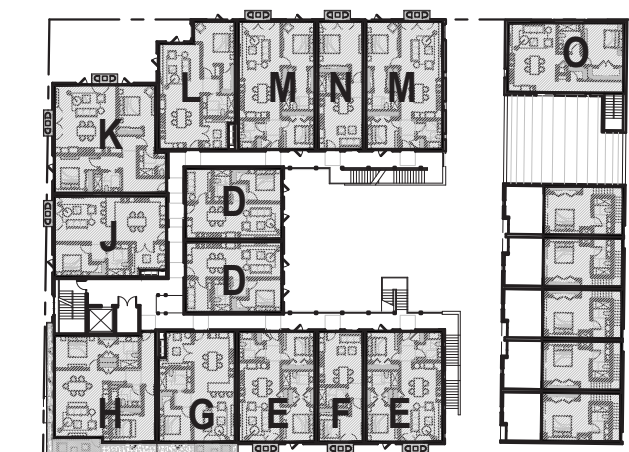
UNIT A:	2	UNIT L:	1
UNIT B:	1	UNIT M:	2
UNIT C:	1	UNIT N:	1
UNIT D:	4	UNIT O:	1
UNIT E:	4	UNIT P:	1
UNIT F:	2	UNIT Q:	1
UNIT G:	2	UNIT R:	2
UNIT H:	2	UNIT S:	1
UNIT J:	2	LOFT:	5
UNIT K:	1	TOTAL	36

THIRD FLOOR UNIT KEYPLAN

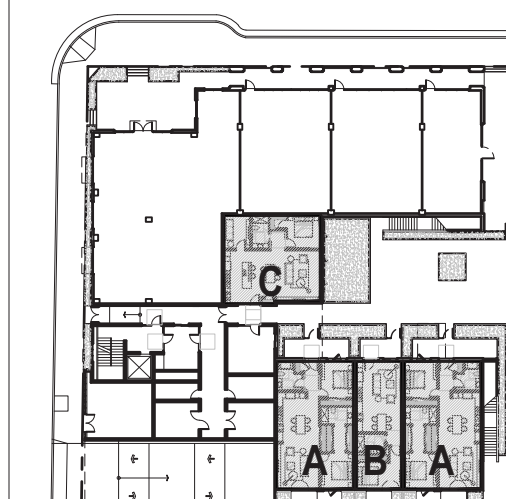


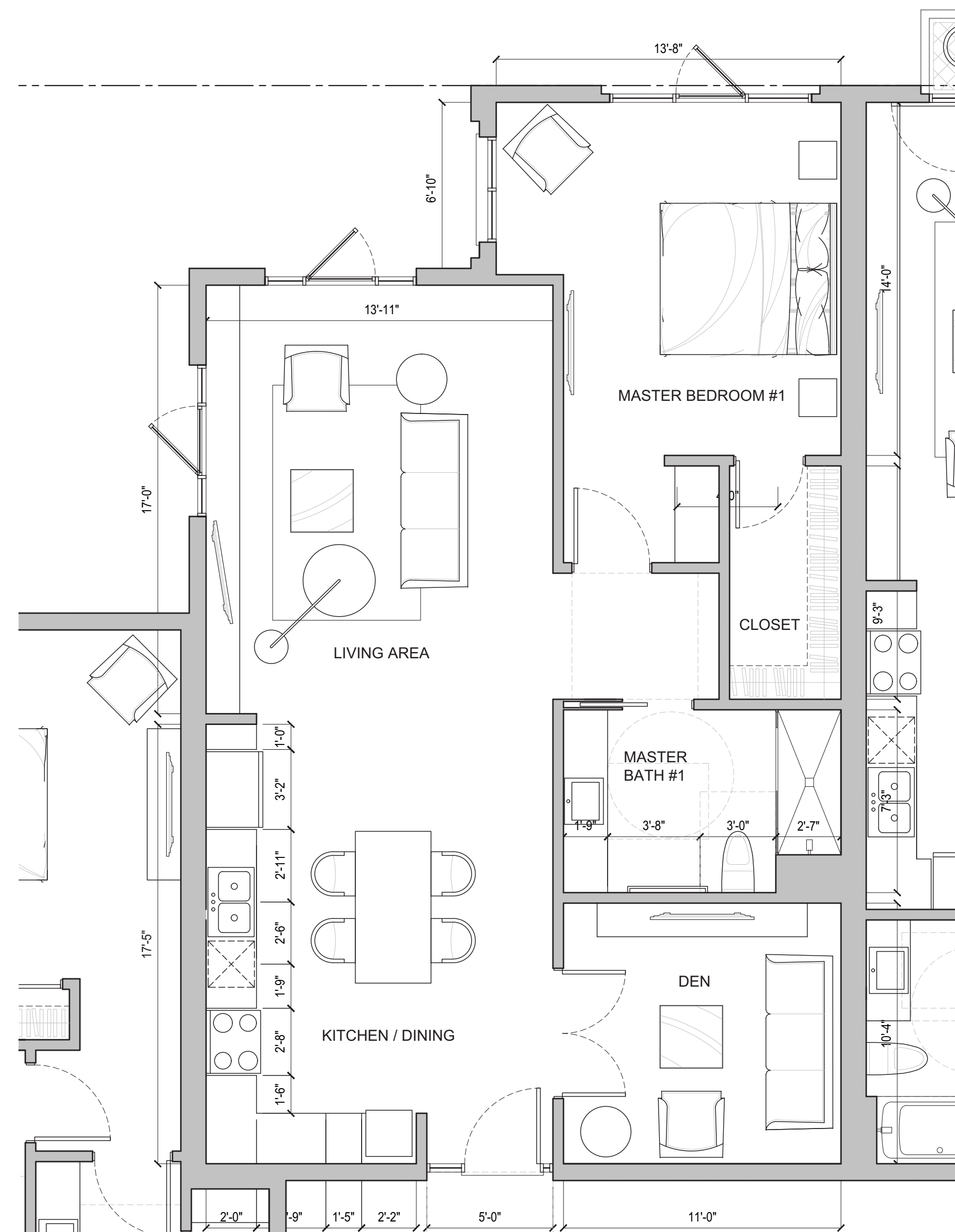
20-ATT 9-43

SECOND FLOOR UNIT KEYPLAN



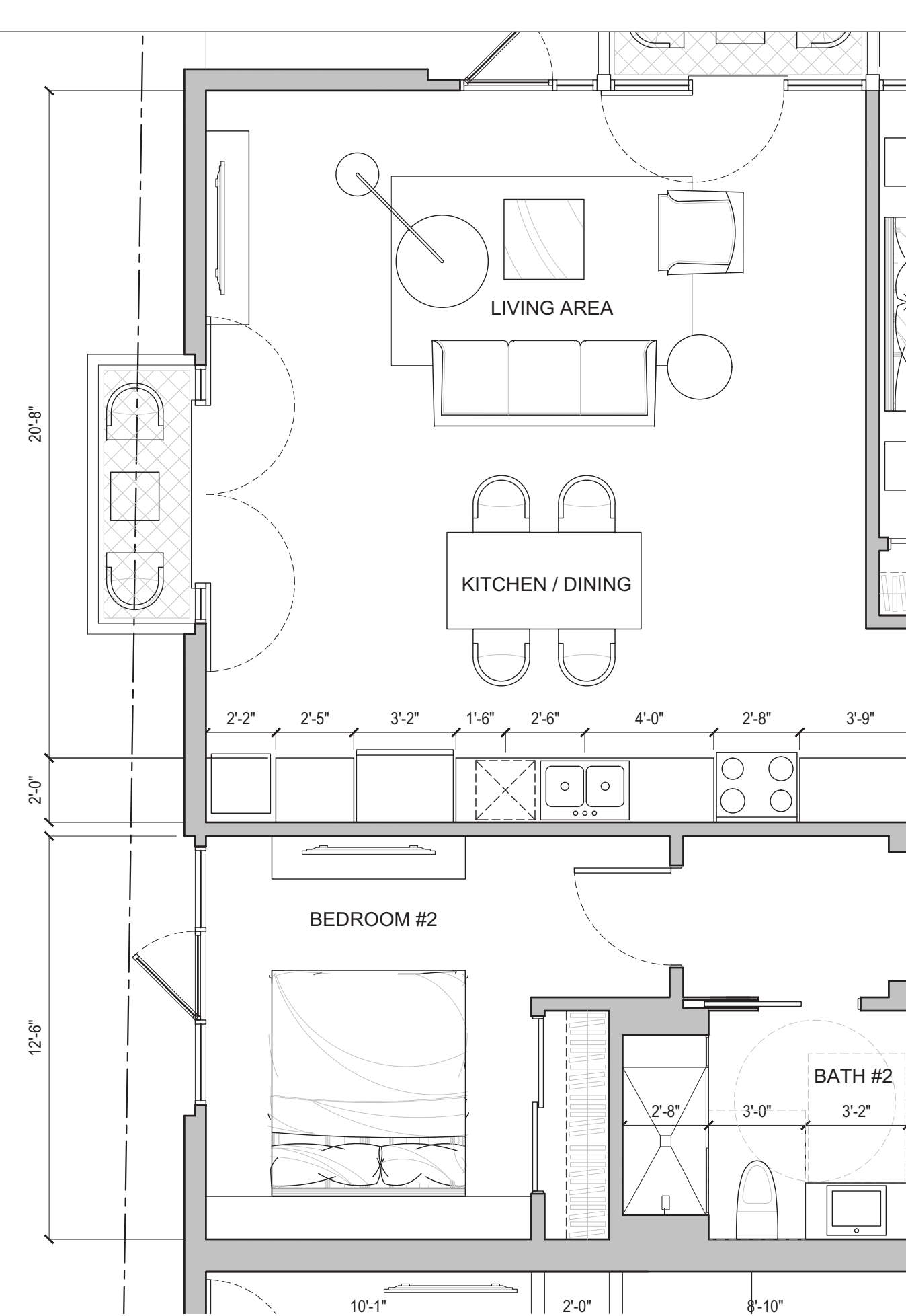
GROUND FLOOR UNIT KEYPLAN





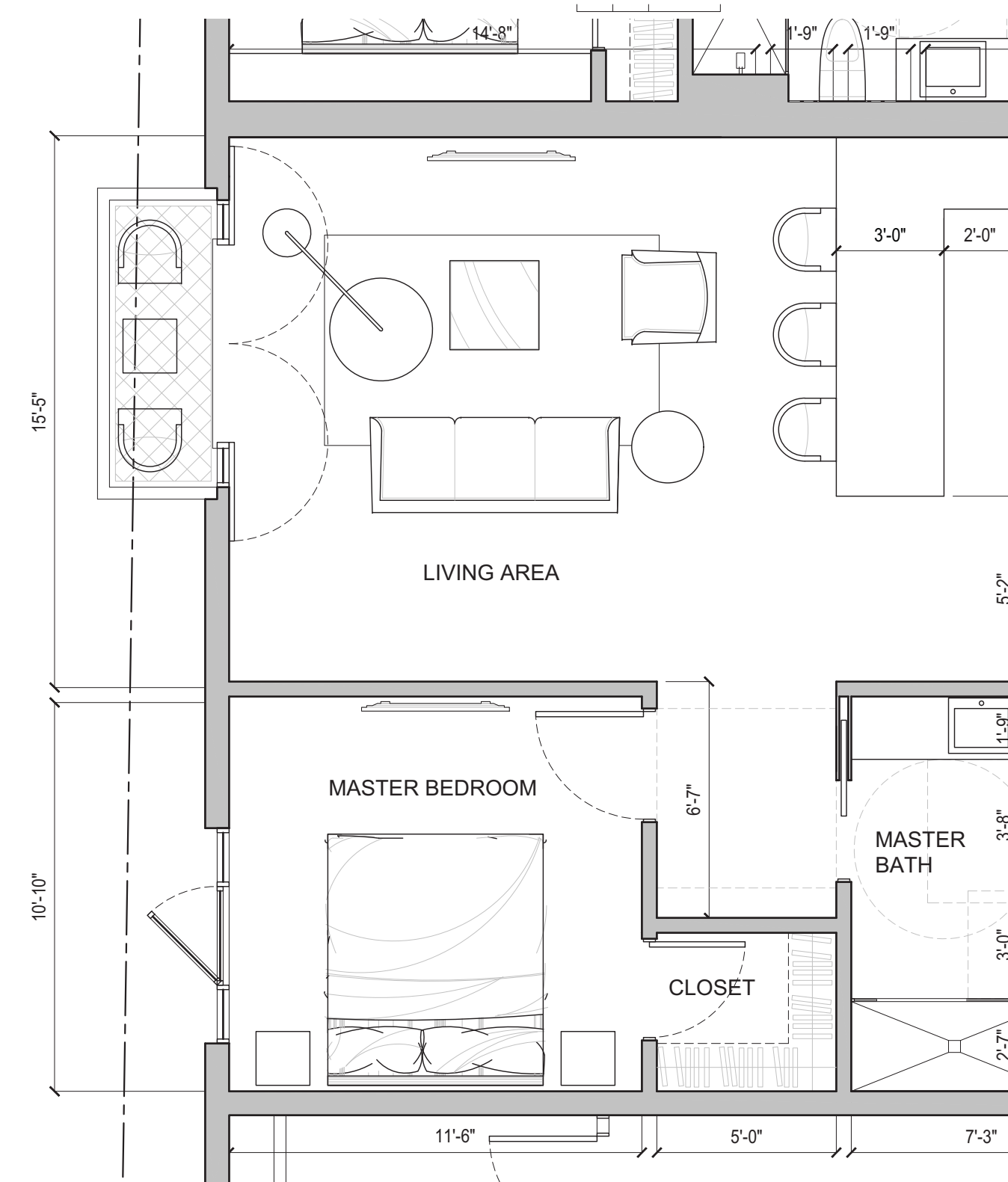
UNIT TYPE L (UNIT Q SIMILAR) 956 SF (INCLUDING INTERIOR WALLS)

scale: 1/4" = 1'-0" 0' 1' 2' 4'



UNIT TYPE K (UNIT P SIMILAR) 1,233 SF (INCLUDING INTERIOR WALLS)

scale: 1/4" = 1'-0" 0' 1' 2' 4'



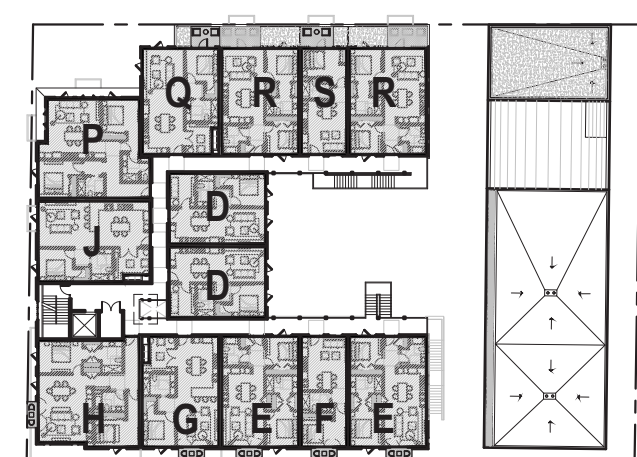
UNIT TYPE J 960 SF (INCLUDING INTERIOR WALLS)

scale: 1/4" = 1'-0" 0' 1' 2' 4'

PROJECT UNIT MIX

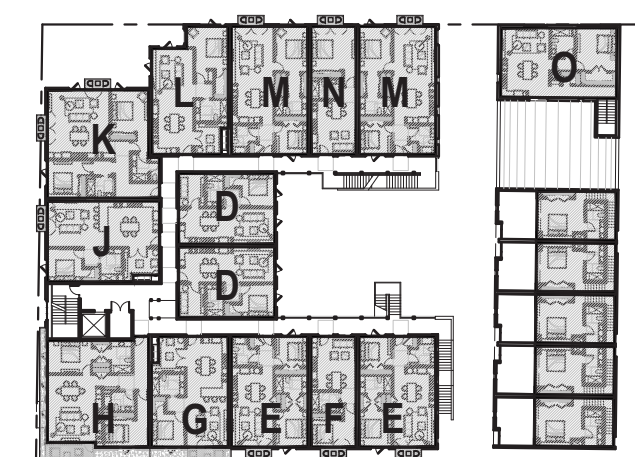
UNIT A:	2	UNIT L:	1
UNIT B:	1	UNIT M:	2
UNIT C:	1	UNIT N:	1
UNIT D:	4	UNIT O:	1
UNIT E:	4	UNIT P:	1
UNIT F:	2	UNIT Q:	1
UNIT G:	2	UNIT R:	2
UNIT H:	2	UNIT S:	1
UNIT J:	2	LOFT:	5
UNIT K:	1	TOTAL:	36

THIRD FLOOR UNIT KEYPLAN



20-ATT 9-44

SECOND FLOOR UNIT KEYPLAN



GROUND FLOOR UNIT KEYPLAN

