

2012 Annual Report



Chief Joseph F. Payne

Prepared by
Michael Neff, Administrative Sergeant
Richard Lee, Crime Analyst
Idessa Gonzales, Records Clerk



Chief's Message

Honorable Mayor and City Council:

Attached you will find the Police Department's Annual Report from the previous calendar year citing Uniform Crime Report Part One crimes as reported to the Department of Justice. According to the Department of Justice, since crime is a sociological phenomenon influenced by a variety of factors, the FBI discourages ranking the agencies and using the data as a measurement of law enforcement effectiveness. This data does, however, demonstrate year-to-year changes and provides a roadmap for law enforcement and elected and appointed officials on policing trends and emerging concerns for public safety. This Annual Report also will identify areas where the department has made progress, new initiatives, changes from the previous year, and overall direction of the Police Department. Contained in this report are the overall statistics from last year for department activity and calls-for-service. A great deal of work went into this report and we hope it will enlighten you to all the positive changes within the Police Department and hopefully enhance the transparency within the department, with the city, its leaders, and the community.



Joseph Payne

Chief of Police



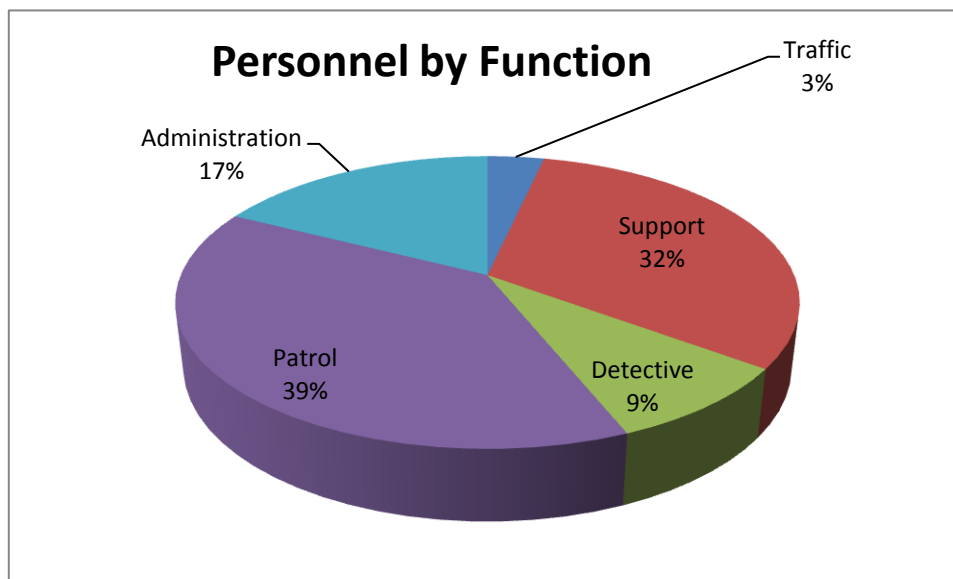
Department Organization

The South Pasadena Police Department is comprised of 34 sworn officers, including captains, sergeants, corporals and chief of police, 12 non-sworn personnel and seven part-time non-sworn personnel. The department is augmented with an additional 18 reserve officers and one volunteer chaplain.

Below shows the staffing of the police department:

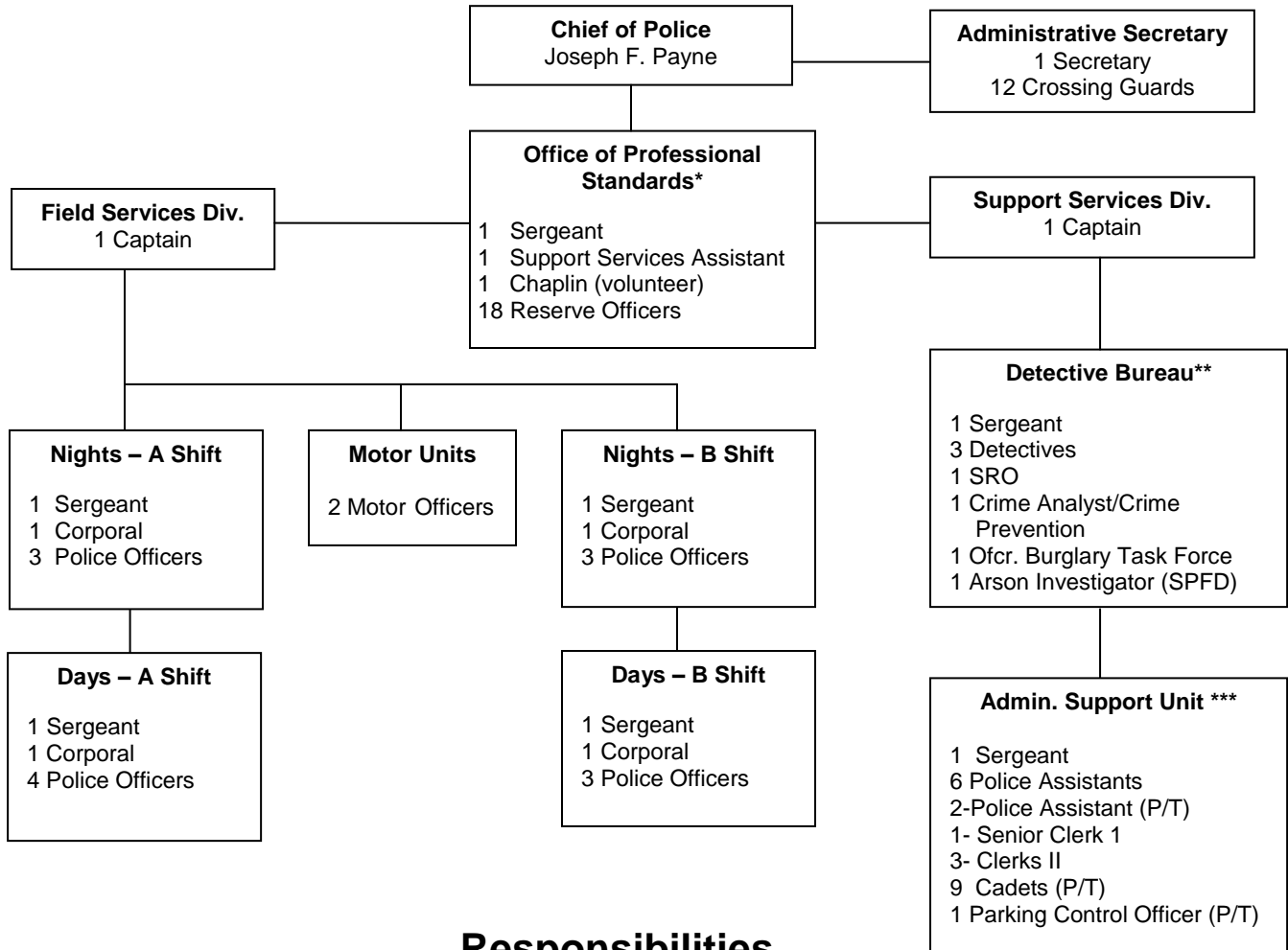
Chief of Police	1
Captains	2
Sergeants	7
Corporals	5
Police Officers	19
Police Assistants	6
Police Assistants (part-time)	2
Clerks	4
Support Services Assistant	1
Administrative Secretary	1
Cadets (part-time)	9
Parking Control Officer (part-time)	1
Parking Control Officers (contract services)	2
Animal Control Officer (contract services)	1
Chaplin (volunteer)	1

The chart below shows the personnel by function:





South Pasadena Police Department Organizational Chart



Responsibilities

*Office of Professional Standards

- Internal Affairs
- Reserve Program
- Recruitment
- Backgrounds
- Projects

**Detective Bureau

- Investigations
- Case filings with District Attorney
- Warrant Service
- Crime Analysis
- Crime Prevention
- School Programs
- Parolee/Probation Compliance Checks
- Sex/Arson/Narcotic/Gang Registrations
- Arson Investigations

***Administrative Support Unit

- Dispatch Center
- Records
- Parking Enforcement
- Fleet Management
- Facilities Management
- Information Technology
- Projects
- Property/Evidence
- Court Liaison



Employee Milestone Anniversaries

In 2012, several police employees were recognized in reaching milestone anniversaries in their career.

In recognizing their achievement, each of these employees was presented a service pin with their milestone anniversary years of service shown.

The police employees listed below were recognized in 2012 for their years of dedicated service in reaching their milestone anniversary:



25-Years of Service

Officer Fernando Sandoval

20-Years of Service

Sergeant James Valencia

10-Years of Service

Police Assistant Arthur Burgos
Corporal Thomas Jacobs

5-Years of Service

Officer Eduardo Acosta
Officer Jose Corney
Officer Jeffrey Holland
Officer Avick Manukian
Officer Juan Salcido
Officer Michael Sanchez
Police Assistant Sharae Rodriguez
Police Assistant Belen Marie Kaminski

In addition to recognizing current employees, the police department also hired several new employees in 2012.

Laura Mendez - Cadet

Kelly Tartaglione – Cadet

Cynthia Pacheo – Police Assistant (part-time)



PART ONE CRIMES

The 2012 Part One Crimes decreased 6.2% compared to 2011 (attempts are also included in the respective category). By the raw numbers, it was a decrease of 35 Part One crimes. The chart below shows the comparisons:

2011-2012 Part One Crimes

	2011	2012	% Change
Homicide	0	1	Not Calculable
Rape	6	6	No Change
Robbery	14	13	-7%
Assault	57	57	No Change
Burglary	141	118	-16%
Larceny-Theft	283	277	-2%
GTA	58	48	-17%
Arson	2	6	200%
Total	561	526	-6.2%

It should be noted that because we are calculating with small numbers, the percentile increases/decreases are large which may not reflect the true raw numbers.

CRIME CLEARANCE

Our clearance rate decreased slightly (0.9%) in 2012. Our clearance rate for 2012 was 21.1% compared to 22% in 2011. Both are above the Uniform Crime Reports (UCR) goal of 14%.

Clearance rates are cases where the suspect has been identified and the case solved either through an arrest, filing or cleared by exceptional means.

HOMICIDE

There was one homicide for 2012, which involved a fatal traffic collision (motorist vs. pedestrian). The pedestrian was crossing a street when the motorist hit the pedestrian. The motorist was arrested for vehicle manslaughter by negligence.

RAPE

There were no changes in rapes, with six occurring in 2012 and in 2011. Of the six rapes that occurred in 2012 only one was committed by a "stranger". In this incident,



the suspect entered a residence through an opened window and attempted to rape the teenaged victim. The victim's father heard noises and entered the victim's bedroom, and confronted the suspect. The suspect jumped out the opened window and ran away. A composite of the suspect was done and after a thorough investigation, the suspect was not identified. The suspects in the remaining five rapes were categorized as "Non-Stranger" relationships, where the suspect and victim knew each other as either as boyfriends, husbands, co-workers or friends/acquaintances.

Two of the rapes were late reported, one occurring in 2008 and the other occurring in 2010.

ROBBERY

There was a 7% decrease in robberies in 2012, but the actual raw number was a decrease of one (14 in 2011 and 13 in 2012). Of the 13 robberies, the suspect was arrested in eight of the cases, either arrested by patrol or by detectives.

Street robberies were the most common accounting for roughly 54% of robberies.

There was one attempt carjack that occurred with the suspect being later arrested by Alhambra PD.

Hands were the most common weapon used in the street robberies, where the suspect pushed, grabbed or punched the victim. A kitchen knife was used in one street robbery and the suspect was arrested. In two of the robberies a simulate gun was used.

Since robbery is defined as taking property by force or fear, there were two shoplifting incidents where the suspects used force against a store employee in attempt to get away.

The chart below shows the robberies:

Type of Robbery	Number
Carjack (attempt)	1
Armed – Commercial	1
Armed – Street (attempt)	1
Strong-arm – Residential	1
Shoplifting (force used)	1
Strong-arm - Street	7
Strong-arm – Commercial	1

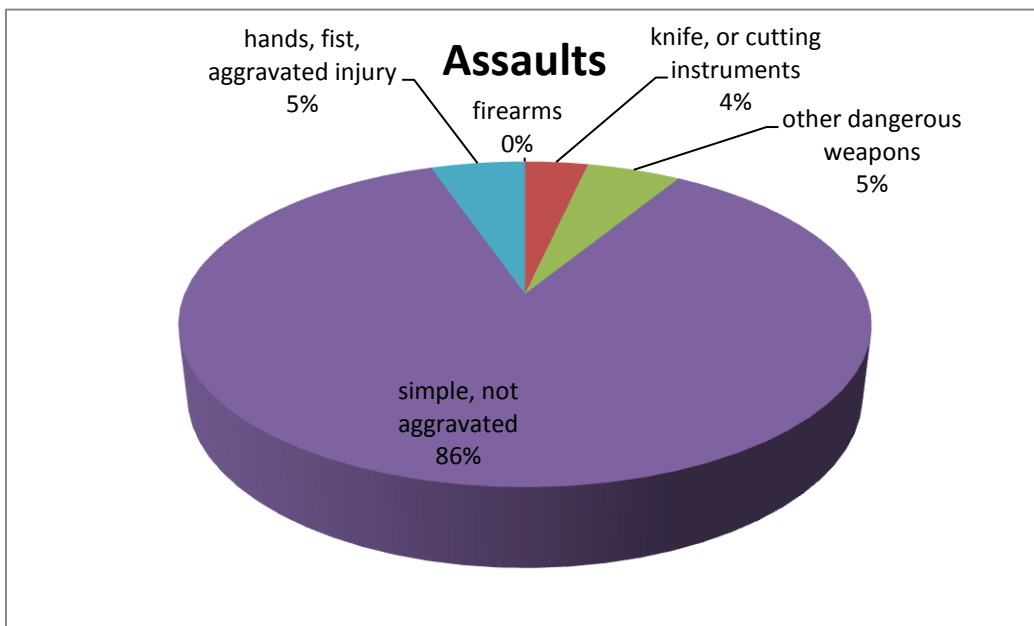


ASSAULTS

Assaults are divided into five categories depending on the weapon used to inflict the great bodily injury. The categories are firearm, knife or cutting instrument, other dangerous weapon, hands (includes fists, feet, teeth) and other simple, not aggravated. Domestic Violence is also included in the Assault category.

There was no change in Assaults for 2012 compared to 2011, with 57 occurring in both years.

As in 2011, “Other simple, not aggravated assaults” accounted for the majority of assaults in 2012 with 86%. Hands were the most common weapon used in assaults which involved everything from a push to a punch. In one incident, the weapon used was a crumbled piece of paper that was thrown at a city employee. The chart below shows the types of assaults for 2012:

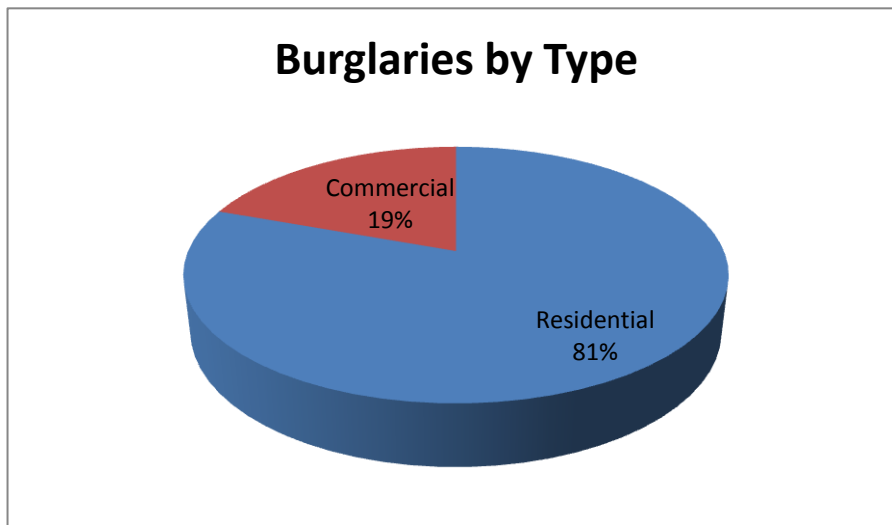




BURGLARY

Burglaries, which include commercial and residential, decreased 16% in 2012. Within burglaries, residential burglaries also decreased 12% from 2011 (95 occurred in 2012 compared to 108 in 2011).

The chart below shows the breakdown by category:



Residential burglaries made up the largest percentage of the burglaries accounting for over 80%. The number of commercial burglaries decreased in 2012, accounting for 19% of the burglaries, compared to 23% in 2011.

July 2012 had the highest number of burglaries in one month with 18. April through July saw the highest number of burglaries for the year, 44% of the burglaries occurred between the four month period.

The average number of burglaries in 2012 was ten per month which is a decrease over 2011 of 12 per month.

By beat area, beat four had the highest number of residential burglaries occur in 2012 with 31. Beat two was second with 21, followed by beat one with 18 and lastly beat three with 13 occurring.

Forced entry into homes declined in 2012. Forced entry accounted for 34% in 2012, compared to 47% in 2011. This shows that more residents are taking the time to secure their homes.

Of the 95 homes burglarized in 2012, only 4% (4 homes) had alarms that were activated by the burglar. This was a drop compared to 2011, when 11% of the homes burglarized had alarms.



In three of the alarm incidents in 2012, the suspect(s) pried a door/window open which activated the alarm. The suspect(s) left and there was no loss. In one alarm incident, the suspect(s) gained entry through an unlocked second floor door and took jewelry. As the suspect exited the residence, the alarm was activated.

The department's Burglary Suppression Unit continued throughout the year. This was created towards the later months of 2011. One officer is assigned to patrol the areas where the highest concentration of burglaries is occurring and is relieved of answering calls for service. This allows the officer to concentrate on burglary suppression. The burglary suppression appears to have helped reduce the number of burglaries for 2012.

Since burglars commit crimes in various cities, police departments across the San Gabriel Valley saw a need to create a regional burglary suppression task force to help combat the high number of burglaries occurring in the San Gabriel Valley. In 2012, a San Gabriel Valley Burglary Task Force was created that is comprised of Pasadena, South Pasadena, Arcadia and Monrovia Police Departments. The task force focuses primarily on burglary suspects (many which are gang related) throughout the San Gabriel Valley and conducts surveillances, investigations, arrests, and warrant service.

LARCENY-THEFT

Larceny-Thefts are simple thefts that include pick-pockets, purse-snatch, shoplifting, thefts from unlocked vehicles, theft of motor vehicle parts, bicycles, theft from buildings, theft from coin operated machines and others.

Larceny-Thefts decreased 2% from 283 in 2011 to 277 in 2012. As in 2011, the thefts of bicycles (most of which were unlocked), thefts from unlocked vehicles, auto burglaries and shoplifting from businesses were the most common types of thefts in 2012.

Wallets, portable GPS and cell phones were the most popular items stolen from thefts from unlocked vehicles and auto burglaries. Liquor was the most popular item shoplifted from stores, followed by food products and DVDs.

STOLEN VEHICLE

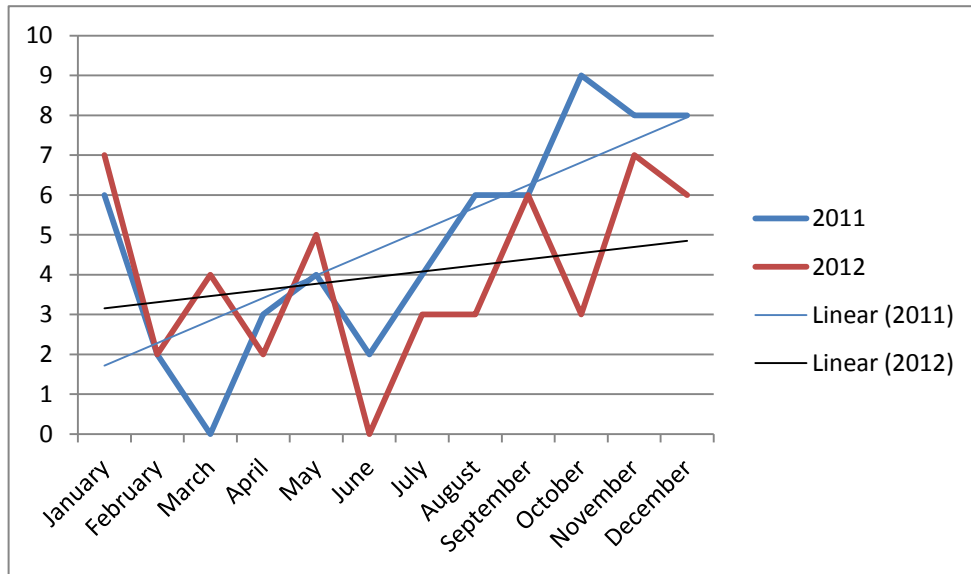
For the year 2012, stolen vehicles decreased 17% compared to 2011 (48 occurred in 2012 compared to 58 in 2011).

The per month average decreased to four, compared to five stolen vehicles per month for 2011. The largest number of stolen vehicles occurred in January and November with each month having seven occur. In 2011, October was the highest number of stolen vehicles with nine.

The 2011 and 2012 stolen vehicle trend shows there were increases in stolen vehicles towards the end of the year; however there wasn't a steep of a change in 2012 compared to 2011.



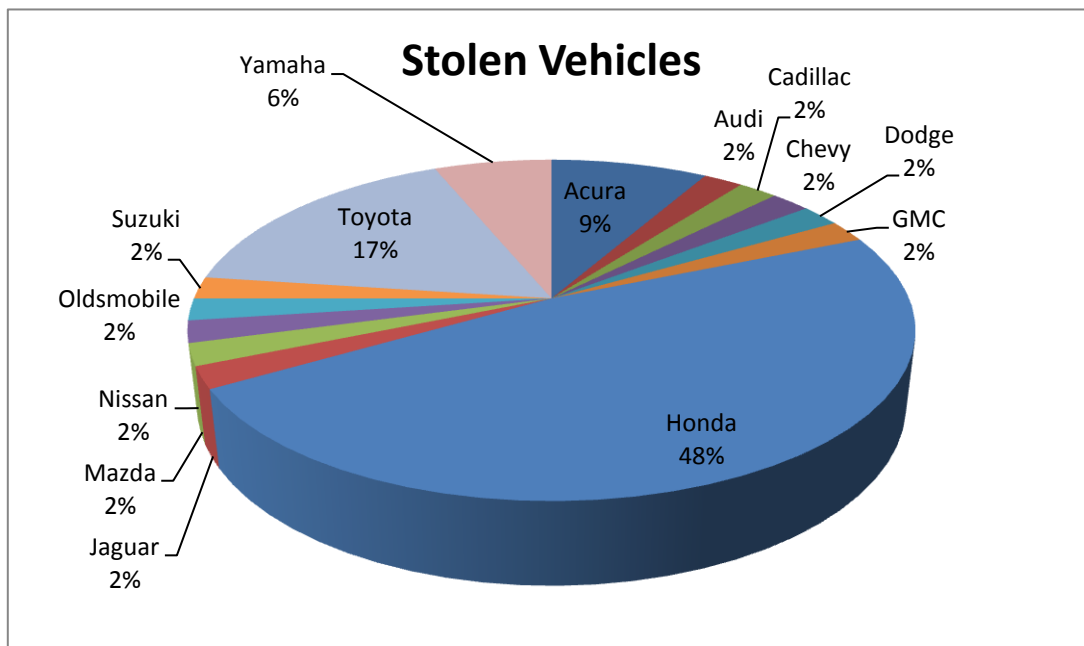
The chart below shows the comparison between 2011 and 2012, as well as the trend line regression for 2011 and 2012.



HOT HONDAS CONTINUE

Hondas again continue to be the most popular vehicle stolen in South Pasadena. In 2012, Hondas accounted for 48% of all vehicles stolen (23 in 2012). This is a slight drop as Hondas have previously accounted for over 50% of all vehicles stolen. Toyotas again were the second most popular vehicle stolen in South Pasadena accounting for 17% (8 in 2012), followed by Acura with 9% (4 in 2012) and Yamaha with 6% (3 in 2012). All three Yamahas stolen were motorcycles.

The pie chart below shows the breakdown of vehicles by make:





In 2012, by make and model, the Honda Accord was again the most popular vehicle stolen followed by the Honda Civic. Respectively, the Acura Integra and Toyota Camry were the third and fourth most popular vehicles stolen.

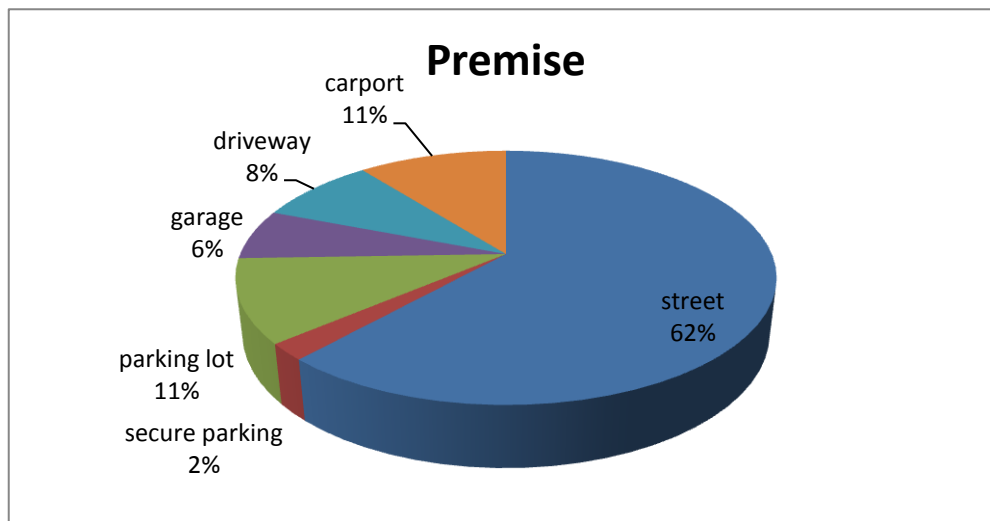
By year of vehicles, the 1990s era of vehicles was the most popular vehicles stolen. Of the 13 Honda Accords stolen for 2012, all but one was 1990s era (1990-1999). The 1990s era vehicles were also popular among the top four vehicles by make and model.

PREMISES

The premises where the majority of the vehicles were stolen from was the streets. Vehicles parked on the streets accounted for 62% of where vehicles were stolen from. This trend hasn't changed as vehicles stolen from the streets in 2011 accounted for 60%.

Vehicles parked in carports and parking lots were second accounting for 11% followed by vehicles parked on driveways and garages and secure parking garages.

The chart below shows the breakdown:



Multi-unit residential complexes (apartment and condominiums) continue to be the most targeted areas hit accounting for 60% of where vehicles were parked. This is most likely due to the lack of secure parking because all the tenants and residents have to park on the streets. Single-family residences were second accounting for 29% and commercial parking lots last accounting for only 11%.



By beat area, Beat Four had the highest number of stolen vehicles occur with 17. Beat Two was close behind in second place with 16 vehicles stolen and Beat One in third place with nine.

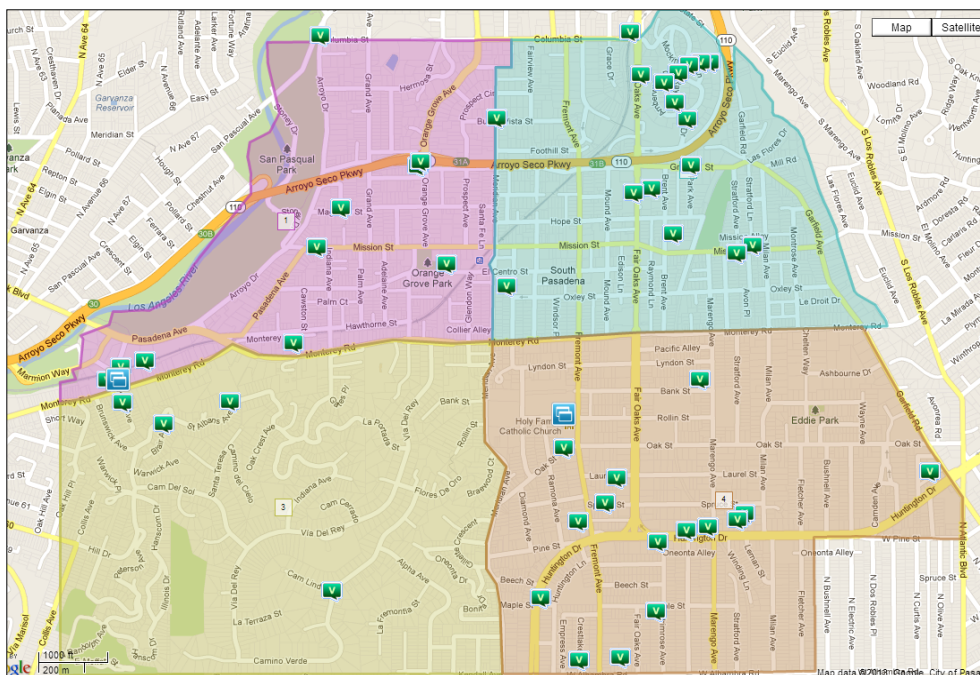
In years past, the south area of the city (area south of Monterey Road) had the highest number of stolen vehicles occur, but in 2012, the north area of the city had slightly more stolen vehicles occur with 25 compared with 23 in the south area. Dividing the city between east and west (Meridian Avenue as the dividing line) the east area of the city yielded the highest number of stolen vehicles accounting for 69% (33 occurring). The chart below shows the breakdown by beat area:

Beat Area	Number	%
One (Northwest Area)	9	19%
Two (Northeast Area)	16	33%
Three (Southwest Area)	6	13%
Four (Southeast Area)	17	35%

Of the immediate area where freeway off/onramps are located (600 block of Orange Grove and Raymond Hill area), the Raymond Hill area yielded a larger number of stolen vehicles occurring. Only two vehicles were stolen in the immediate area of the 600 block of Orange Grove compared to eight occurring in the Raymond Hill area.

The 100 block of Monterey was the second area with the greatest concentration of stolen vehicles (which borders the LAPD Hollenbeck and Northeast area) with six stolen vehicles occurring. In 2011, the 100 block of Monterey had the greatest concentration of stolen vehicles occurring.

The map below shows the location of the vehicles stolen for 2012:

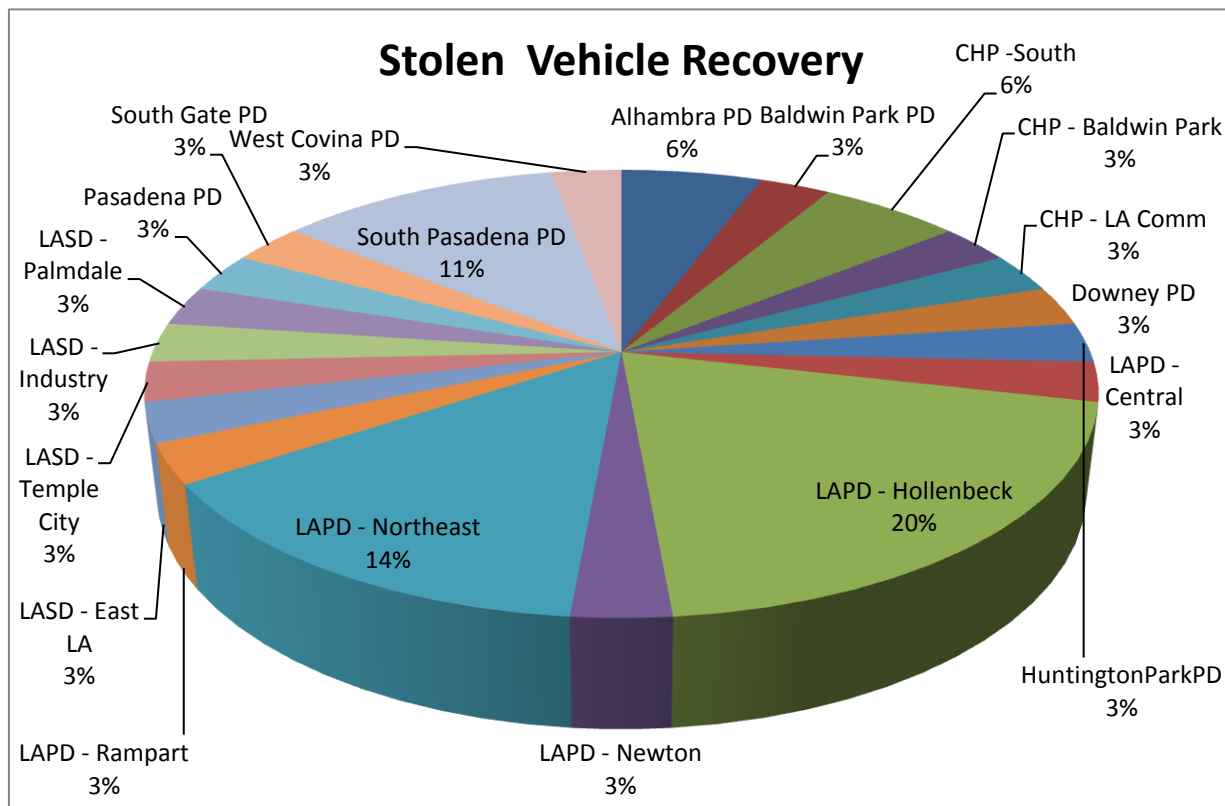




Stolen Vehicle Recovery

As of January 18, 2013, 81% of the vehicles stolen in 2012 were recovered, with LAPD Hollenbeck Division recovering the most with 20%. In 2011, the recovery rate was also 81% with LAPD Hollenbeck Division again recovering the most accounting for 32%.

LAPD Northeast Division was next recovering 14% of our stolen vehicles followed by our own police department recovering 11%. As in 2011, LAPD Hollenbeck and Northeast Divisions recovered the most number of our stolen vehicles, together accounted for 34% of our stolen vehicles. In 2011, both LAPD Divisions accounted for over 40% of our recovered vehicles. This indicates that a large number of car thieves are still coming from the LA area. The chart below shows the departments were vehicles have been recovered:



Of the 48 vehicles stolen in 2012 only 12 were stripped of minor or major components. This was the same number of stripped of minor or major components for 2011. This largely indicates that the suspect(s) who are stealing vehicles in South Pasadena are doing so for “joyriding” purposes or used for the purpose of committing other crimes.

Of the 48 vehicles stolen, the suspects were arrested in three of the incidents.



ARSON

Arson was the largest change by percent, showing a 200% increase from 2011 to 2012, however, the actual number of arsons increased by four.

Of the six Arsons, a suspect was arrested in only of the incidents. In this incident, a transient had started a fire to keep warm.

One incident occurred inside the boy’s restroom at the South Pasadena Middle School, where the suspect lit a roll of toilet paper on fire. Several witnesses were interviewed and the suspect was possibly a student, but was not positively identified. Another incident involved a vehicle fire that may have been a result of a business dispute. Three of the arsons may have occurred by the same suspect. All three occurred within a two-day period and the method was the same in all three incidents. The suspect had wrapped a piece of paper around a rock and threw it in some vegetation. Damage was minimal due to damp conditions of the material.

CALLS FOR SERVICE

The following pages show 2011-2012 Part One Crimes and various categories of calls for service:

2011-2012 Part One Crimes

	2011	2012	% Change
Homicide	0	1	Not Calculable
Rape	6	6	No Change
Robbery	14	13	-7%
Assault	57	57	No Change
Burglary	141	118	-16%
Larceny-Theft	283	277	-2%
GTA	58	48	-17%
Arson	2	6	200%
Total	561	526	-6.2%

Crime Clearance

2011	2012	% Change
22%	21.1%	-4.09%

Arrests

Arrests	2011	2012	% Change
Adult	1141	1158	1.49%
Juveniles	85	58	-31.76%
Total	1226	1216	-.82%



Traffic Accidents

Traffic Collisions	2011	2012	% Change
Injury	66	63	-5%
Injury hit and run	3	4	33%
Non-Injury	72	52	-28%
Non-Injury hit and run	22	22	0%
Fatal	0	1	Not Calculable
Total	163	142	-13%

Citations

Citations	2011	2012	% Change
Citations	4710	4138	-12%
Parking	9422	10880	15%
Warnings	24	12	-50%
Arrive Alive	85	28	-67%
Others	899	950	6%
Total	15140	16008	6%

Agency Assist

Agency Assist	2011	2012	% Change
Assist Fire	320	644	101%
Assist Outside Agency	456	572	25%
Assist Outside Agency 911 Transfer	-*	841	N/A

* Not tracked in 2011

Telephone Calls

Calls	2011	2012	% of Change
Inbound 911 Calls	5591	6331	13%
Inbound Landline Calls	40472	36933	-9%
Total Inbound Calls	46063	43264	-6%
Total Outbound Calls	19489	17332	-11%
Total Inbound/Outbound Calls	65552	60596	-8%



Selected Calls for Service

Calls for Service	2011	2012	% Change
Robbery Alarms	69	69	0%
Burglar Alarms (vehicle, residential & commercial)	1059	1013	-4%
Domestic Disputes (Domestic Violence, family, boy/girlfriend)	159	170	7%
Suspicious Persons (pedestrian & vehicle)	1306	1382	6%
Extra Patrol	3571	3258	-9%
Traffic Stops	7967	7936	0%
Special Traffic Enforcement	289	9	-97%
Foot Beats	17	56	229%
Vehicles Booted (5 or more park cites)	36	36	0%
Outside Agency Assist	456	530	16%
Welfare Checks	234	201	-14%
Disturbance (parties, families, neighbors, business disputes)	861	958	11%
DUI Arrests	78	167	114%
Total CAD Calls	29701	31216	5.1%



2012 Annual Report

Part One Crimes 2012

	Robbery			Burglary (commercial & residential)			Larceny			Motor Vehicle Theft		
	2011	2012	%	2011	2012	%	2011	2012	%	2011	2012	%
January	0	1	NOT CAL	8	10	25%	17	27	59%	6	7	17%
February	1	1	0%	2	9	350%	16	16	0%	2	2	0%
March	3	2	-33%	13	4	-69%	26	30	15%	0	4	NOT CAL
April	1	1	0%	18	12	-33%	35	23	-34%	3	2	-33%
May	1	2	100%	14	11	-21%	20	20	0%	4	5	25%
June	0	2	NOT CAL	13	11	-15%	24	23	-4%	2	0	-100%
July	1	1	0%	9	18	100%	22	21	-5%	4	3	-25%
August	2	0	-100%	4	8	100%	18	23	28%	6	3	-50%
September	1	1	0%	8	8	0%	12	15	25%	6	6	0%
October	1	2	100%	19	8	-58%	41	32	-22%	9	3	-67%
November	0	0	NOT CAL	18	8	-56%	28	20	-29%	8	7	-13%
December	3	0	-100%	15	11	-27%	24	27	13%	8	6	-25%
TOTALS	14	13	-7%	141	118	-16%	283	277	-2%	58	48	-17%
Average	1.2	1.1	-7%	11.8	9.8	-16%	23.6	23.1	-2%	4.8	4.0	-17%
ANNUAL												
High	3	2		19	18		41	32		9	7	
Low	0	0		2	4		15	15		0	0	
Mean	1.5	1		10.5	11.0		28.0	23.5		4.5	3.5	



2012 Annual Report

Part One Crimes (continued) 2012

	Murder			Rape			Aggravated Assault			Arson		
	2011	2012	%	2011	2012	%	2011	2012	%	2011	2012	%
January	0	0	NOT CAL	1	0	-100%	2	3	50%	0	0	NOT CAL
February	0	0	NOT CAL	0	2	NOT CAL	7	5	-29%	0	1	NOT CAL
March	0	0	NOT CAL	0	0	NOT CAL	2	5	150%	0	0	NOT CAL
April	0	0	NOT CAL	0	0	NOT CAL	6	5	-17%	0	1	NOT CAL
May	0	0	NOT CAL	0	0	NOT CAL	7	9	29%	0	0	NOT CAL
June	0	0	NOT CAL	0	0	NOT CAL	7	4	-43%	0	0	NOT CAL
July	0	1	NOT CAL	1	0	-100%	6	4	-33%	1	0	-100%
August	0	0	NOT CAL	1	0	-100%	4	3	-25%	0	0	NOT CAL
September	0	0	NOT CAL	0	1	NOT CAL	1	2	100%	0	0	NOT CAL
October	0	0	NOT CAL	1	0	-100%	3	6	100%	0	0	NOT CAL
November	0	0	NOT CAL	1	1	0%	5	5	0%	1	3	200%
December	0	0	NOT CAL	1	2	100%	7	6	-14%	0	1	NOT CAL
TOTALS	0	1	NOT CAL	6	6	0%	57	57	0%	2	6	200%
Average	0.0	0.083	NOT CAL	0.5	0.5	0%	4.8	4.8	0%	0.2	0.5	200%
ANNUAL												
High	0	1		1	2		7	9		1	3	
Low	0	0		0	0		2	3		0	0	
Mean	0	1		0.5	1		4.5	6		0.5	1.5	

YTD	2011	2012	%
Jan-Dec.	561	526	-6.2%



Patrol

Patrol is the core of the police department with the majority of its personnel in a patrol assignment.

For reporting purposes, the city is divided into four sections designated as beats and is numbered 1-4. Each patrol officer is assigned a beat responsible for handling reports and calls for service. Officers can patrol anywhere in the city but must be the handling officer within their beat on calls for service.

Beat one is comprised of the northwest area of the city which borders the cities of Los Angeles and Pasadena. Beat two is comprised of the northeast area of the city which borders the cities of San Marino and Pasadena. Beat three is comprised of the Monterey Hills area (southwest area) which borders Los Angeles on both sides. Beat four comprises the southeast area of the city which borders Alhambra, San Marino and El Sereno. The dividing line between each beat area is Meridian Avenue and Monterey Road.

Patrol officers respond to all calls for service in addition to patrolling the city and assisting detectives in servicing local warrants. Officers can respond anywhere in the city within a few minutes.

Some notable arrests by patrol officers in 2012 were the arrests of two burglary suspects that had entered an apartment building that was being tented and fumigated. Workers returned early in the morning and saw a female suspect emerge from under the tent. Officers quickly responded and with the help of a police helicopter located a male suspect on a nearby rooftop and the female suspect was arrested hours later walking back near the apartment complex. It was discovered that the suspects had burglarized eight apartment units.



Officers arrested a robbery suspect several blocks from where it occurred. In this incident, the victim was sitting in her parked vehicle in the parking lot of Pavilions when the suspect approached. The suspect brandished a knife and attempted to rob the victim. The victim fought the suspect off and the suspect walked away. Responding officers found the suspect several blocks away and arrested him.

In August 2012, a suspect entered the victim's residence and assaulted a 79 year-old female. The assault was interrupted when the victim's grandchildren arrived home, scaring off the suspect. After a two-hour intensive search by patrol and detectives, the suspect was arrested. The suspect was found to be a wanted parolee with a long criminal history.



Detective Bureau

The Detective Bureau is staffed by a supervising Sergeant, (3) full-time detectives, (1) detective/School Resource Officer, (1) detective/crime analyst/crime prevention officer and (1) Arson investigator.

The Detective Bureau is the investigative branch of the police department and is responsible for filing cases with the district attorney's office and also to provide follow up work needed on cases to ensure a successful prosecution of the suspect. This may require analyzing evidence, contacting and interviewing witnesses, preparing and serving search and arrest warrants, contacting and coordinating with outside agencies to name a few.



Det. Earley speaking to Channel 2 News

Detectives also assist patrol in responding to emergency calls for service, arrange extradition of suspects from out of county/out of state, and at times speak to the media regarding certain cases.

The Detective Bureau performed several undercover operations in 2012. With the assistance of neighboring agencies, undercover officers performed compliance checks to stores to ensure they would not sell cigarettes to people under 18 years of age.

Undercover officers and officers from neighboring agencies also performed compliance checks at stores offering massages. In two separate businesses an employee was arrested for prostitution. Both massage business had their business license temporarily suspended.

Surveillance videos continue to be a great assistance in identifying suspects. Surveillance videos are posted on the department's YouTube website as well as being sent to the media. A suspect in a dog theft case turned himself in after seeing the surveillance video of him on TV.

DNA also continues to help identify suspects. In one case DNA was collected from a glove left by the suspect and a watch that a suspect attempted to take from another robbery. Both suspects were arrested.

Follow up by detectives resulted in the arrest of a 20 year-old Downey resident in a suspicious death/theft of property case.

Two detectives are certified as Arson Investigators and assist in the investigations of causes and origins of fire. Arson Investigator Rob Jones is a South Pasadena Fire Engineer that also investigates the causes of fires within the Verdugo-Foothill District (which comprises of Burbank, Glendale, Pasadena, Sierra Madre, Monrovia, Arcadia, San Marino, San Gabriel, South Pasadena, Alhambra, Montebello and Monterey Park).



School Resource Officer

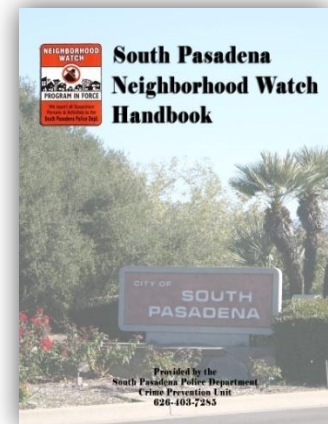
The School Resource Officer's (SRO) main responsibility is the schools. The SRO also assists with school activities to help build a positive relationship with the students. Additionally the SRO investigates crimes that occurred or involved students from the schools.

The detective assigned as the SRO was promoted to Corporal, thus transferring him back to patrol. The Corporal was still acting as an SRO on a limited basis, conducting cigarette decoy program, attending Student Attendance Review Board meetings and football/basketball home games.

Crime Prevention/Crime Analysis

The Crime Prevention and Crime Analysis Unit are comprised of one detective handling both duties while also handling a detective case load.

Crime Analysis involves analyzing crime patterns, trends and series, and provides information on how to deploy resources in an effective manner. The Crime Analyst also maintains crime statistics for the department, intelligence gathering and sharing with neighboring agencies, registers sex, arson, narcotics and gang registrants in the city. The crime analyst also performs the computer composites of suspects. Using the ComPhoto Plus II composite program, computer generated composites enable a more realistic picture of the suspect. The crime analyst assists outside agencies in generating computer composites of suspects.



The crime analyst also transfers videos to a digital format to be used as still photos, as well as generating and distributing crime bulletins to the community and surrounding agencies.

Crime Prevention is the community outreach program to educate ways to prevent crime from happening through literature, public speaking, station tours and events. The Crime Prevention Officer also assists in sending out Nixle alerts to the community.

The Crime Prevention Unit performs Home Security Inspections at no charge to residents. The officer will walk through a home and offer ways to better secure it.

The Weekly Crime Summary and monthly Neighborhood Watch Newsletters provide information on recent crime trends and crime prevention tips. Both are sent to the media, Neighborhood Watch groups, schools and the community. Both are also posted on the city's website.

The Neighborhood Watch program is the core of the crime prevention programs. With over 60 Neighborhood Watch groups covering all areas of the city, the residents are the



“eyes and ears” of the police department. Residents learn about various crime prevention tips and learn how to report suspicious activity to the police.

The Community Patrol program continues to be in active part of crime prevention. The Community Patrol is a volunteer organization in which patrol members walk around schools and businesses reporting suspicious activity. Their tan colored vest and cap help make the recognizable to the community and provides an extra “eyes and ears” for the police department. Community Patrol members must pass a background check and training before being allowed to patrol the streets. Community Patrol members take no enforcement action as they are unarmed and only carry a cell phone to call the police should they need to report any suspicious incidents, or crime in progress.

The annual Open House continues to be the biggest event the police and fire department hosts for the community. Held in conjunction with the city’s Tournament of Roses Classic Car Show, the highly successful joint event attracts over 10,000 people annually. For 2012, the Clean Air Car Show joined the event. This addition along with the Classic Car Show and Police and Fire Open House made the day event a big hit for the city.

The police and fire department is opened to the public for guided tours and various outside agencies participated providing information from hiring a legitimate contractor to alarm companies. Attendees could drive through an obstacle course while wearing specially designed goggles that simulate driving under the influence. The South Pasadena Police Special Enforcement Team and canine officer performed an exciting police demonstration. The South Pasadena Fire Department also showcased their skills with an exciting fire demonstration. The newly created police Honor Guard led the opening ceremonies of the day’s event.

South Pasadena Police shirts and other giveaway items were distributed to the children and child fingerprinting is always a favorite for parents. Helicopter landings and child souvenir photographs are also a crowd favorite. The Star Cars Central Car Club, which members have replica cars that were used in television and movies are a big attraction. Some notable cars that were on display were Austin Powers “Shaguar”, James Bond’s DB6, Adam 12 police car, Dukes of Hazzard’s “General Lee” and “Herbie” the Lovebug.





Canine (“K-9”)

The South Pasadena Police Department’s K-9 unit continues to consist of two K-9 teams. One K-9 is used in daily patrol operations and the other K-9 is part of the Scent Evidence Team.

“Rex”

Officer Fernando Sandoval and his partner “Rex” continues to handle patrol K-9 functions. “Rex” is a Dutch Malinois and is trained in locating persons and detecting explosives.

Besides being assigned as a patrol officer, Officer Fernando Sandoval and “Rex” are also part of the San Gabriel Valley K9 Association. This association is comprised of canine officers from Pasadena, Alhambra, Monterey Park, Whittier, Glendora and the South Pasadena Police Departments.

The purpose of the association is to consolidate canine services with the different departments. This ensures that a canine is always available with each agency.

Officer Fernando Sandoval and “Rex” continue to make many public relation appearances in the community, interacting with children and parents.





“Anna Belle Lee”

Reserve Officer Dennis Slavin and his partner “Anna Belle Lee” make up the Scent Evidence Team.

“Anna Belle Lee” is a Bloodhound. Bloodhounds are world-famous for their ability to follow scent from specific humans over very long distances or in complex environments. They can track people on trails that are days and sometimes weeks old.

The team is used to search for suspects, collect scent evidence and find missing people. The South Pasadena Police Department was the first city in Los Angeles County to have its own bloodhound program.

Reserve Officer Dennis Slavin and “Anna Belle Lee” have been used frequently to assist with the Federal Bureau of Investigations in their cases.

“Anna Belle Lee” has been on extended medical leave since the later part of 2011 and hopes to return to duty in 2013.





Foothill Air Support Team (FAST)

For the past five years, the South Pasadena Police Department has been involved with the Foothill Air Support Program (FAST).

FAST is a regional Air Support partnership founded in 1999 by then Pasadena Chief of Police Bernard Melekian. FAST provides a regional law enforcement helicopter air support program to enhance public safety services in the San Gabriel Valley. FAST also assist with Homeland Security checks at major sporting events in the San Gabriel Valley.

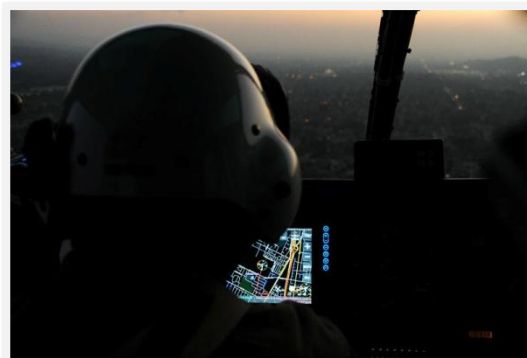


Currently, FAST is a partnership between the cities of Alhambra, Arcadia, Covina, Glendora, Monrovia, Pasadena, Pomona, San Marino, Sierra Madre, and South Pasadena.

Participation in FAST requires each agency to provide an officer to perform the role of an observer, called a “Tactical Flight Officer” (TFO), twice a month. The TFO monitors radio transmissions from the partnering cities and prioritizes which calls to respond to. From its aerial view, the TFO can coordinate ground units and other resources.

Corporal Shannon Robledo is the department’s Tactical Flight Officer and has more than 1,300 flight hours.

The FAST helicopter was upgraded to include a Video Downlink System. This allows a live feed of an aerial view for ground units. Night Vision Goggles were also acquired to assist the TFO in locating suspects/persons at nighttime. The Night Vision Goggles along with the Forward Looking Infrared (FLIR) system are an extension of the helicopter’s ability to help fight crime at night. FLIRs are thermal imaging and can detect body heat at night, while Night Vision Goggles allow the TFO to see in low light conditions.



Tactical Flight Officer Shannon Robledo



Traffic Enforcement

The South Pasadena Police Traffic Unit continues to consist of two motorcycle officers whose primary job is traffic enforcement, traffic safety, traffic education and collision investigation.

The Traffic Unit assist other neighboring agencies with Pedestrian Operation Enforcements which target motorists that fail to yield to pedestrians.



In 2012, the Traffic Unit acquired a "Total Station", which is a type of an electronic surveying tool. This allows the re-creation of a traffic collision, or crime scene, in three-dimensions. A special feature through it's software it allows the creation of an accident scene to be viewed in animation.

Commercial Traffic Enforcement

The department continues to emphasize commercial vehicle enforcement. Commercial Enforcement focuses primarily on commercial vehicles ensuring that they are in compliance to California Law in regards to weight, size, safety equipment and stay on designated truck routes in the city. The weight of a commercial vehicle greater than 10,000 pounds on non-designated truck routes can cause damage to the street due to the heavy weight of the vehicle.



Commercial vehicles are vehicles that are greater than 10,000 pounds, or 40 feet in length.

One additional officer was trained and certified in Commercial Enforcement in 2012, bringing the total number of officers trained in Commercial Enforcement to three.



To assist in commercial enforcement, the department obtained two portable Haenni scales which assists in measuring for overweight commercial vehicles.

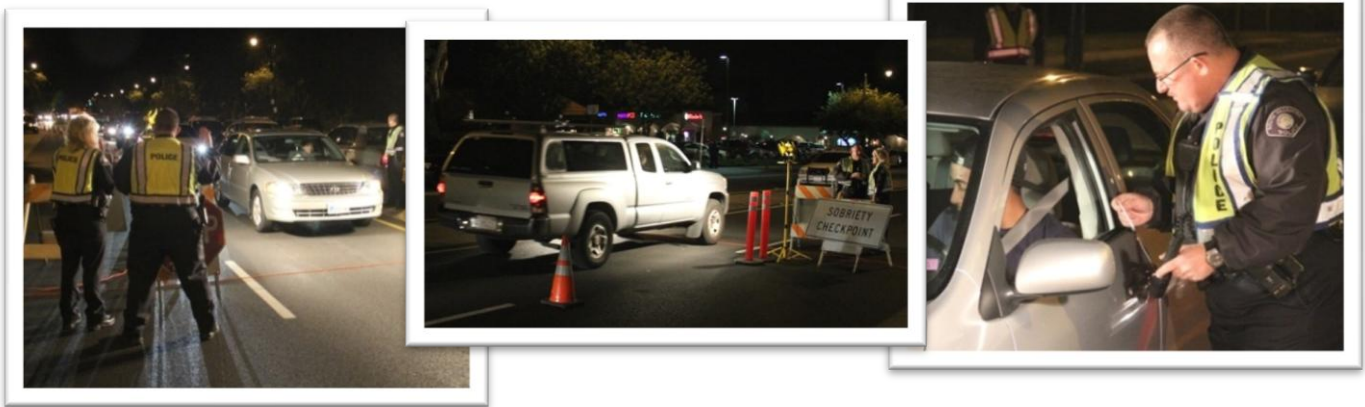
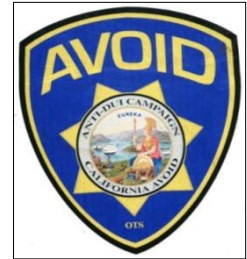
In 2012, several commercial vehicle checkpoints were held in conjunction with the California Highway Patrol and Glendale Police Department. These checkpoints are conducted to check commercial vehicles for weight and to ensure proper safety equipment which includes equipment from fire extinguishers to proper load tie down.

Portable scales allows officers to weigh vehicles



DUI Enforcement

With over 23,000 people killed each year by alcohol related traffic accidents, the South Pasadena Police Department takes a strong enforcement on DUIs. The South Pasadena Police Department made 167 DUI related arrests in 2012, an increase of 114% from 2011. The department also held three DUI Checkpoints and participated in the Office of Traffic Safety's (OTS) "Avoid the 100" DUI program. This program is funded by the OTS and brings counties together to crack down on drunk drivers and reduce the number of alcohol related traffic accidents. Officers from neighboring agencies combine officers and patrol various cities looking for drunk drivers.



MADD Award

Five officers will be honored for the Mothers Against Drunk Driving (MADD) Award for making a high number of driving under the influence arrests in 2012. The red and gold pin symbolizes MADD's mission to stop drunk driving, support victim of this crime and prevent underage drinking.

23152

The five officers are: Captain Richard Kowaltschuk, Sergeant Matt Peterson, Officers Ed Acosta, Mike Sanchez and Ryan Bernal.

Other South Pasadena Officers that have been previously awarded the MADD Award include Corporal Jason Lucas. Corporal Lucas and Officer Sanchez are both multiple recipients of the MADD award.



Special Enforcement Team (SET)

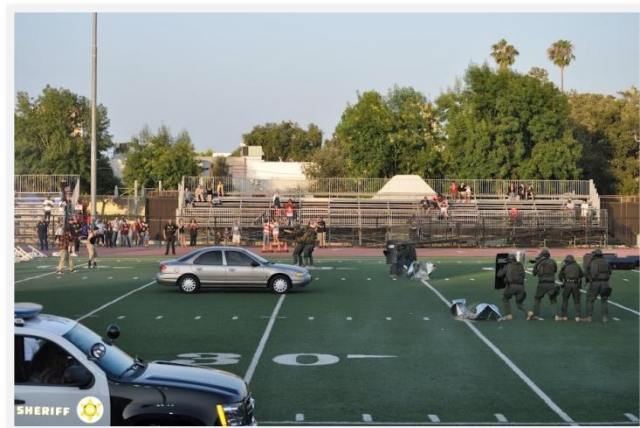
The South Pasadena Police Department's eight-member Special Enforcement Team (SET) continued to train jointly with the Pasadena Police Department's SWAT team 2-3 times a month.

The advanced training specializes in search and arrest warrants techniques, tactical room searches, active shooters and hostage rescue operations.



Since the formation of the department's SET in 2011, four officers attended SWAT school with two more attending in 2012. The last two will complete SWAT school in 2013.

To showcase the advanced training of the SET, a demonstration was performed before the South Pasadena Tournament of Roses 4th of July firework show at the South Pasadena High School. The event featured members of the SET rappelling from a LA County Sheriff's helicopter, a smoke screen, a flashbang grenade, and an arrest of a simulated felony suspect. A police canine demonstration was also performed. A similar demonstration was also performed at the 2012 Police and Fire Open House.



Fourth of July SET demo



“Peacekeeper” Armored Vehicle

The “Peacekeeper” armored vehicle that was acquired in 2011 from Burbank Police Department for only a \$1.00 underwent minor maintenance before becoming fully operational. High Quality Auto Body, Inc. painted the Peace Keeper in black, and lettered as a donation to the department.

The “Peacekeeper” saw extensive use with the department’s Special Enforcement Team in training for 2012 as well as for demonstration purposes at public events.

The “Peacekeeper” can accommodate eight passengers, including the driver and is also available to outside agencies for use. Because of it’s low profile, the “Peacekeeper” can go into carports and subterranean parking garages, which most modern armored vehicles cannot.

The “Peacekeeper” is used for active shooter response, officer and hostage rescues and for serving high-risk warrants.





Captains

The police department is divided into two divisions, Support Services and Field Services.

Support Services

Captain DeAnn Wheeless supervises the Support Services Division of the department. The Support Services Division consists of civilian and sworn personnel who are responsible for providing service to the public and support to the officers.



This is accomplished by personnel assigned to Records, Detectives, Communications, Evidence/Property, and Parking Enforcement.

Responsibilities include overseeing follow-up investigations, enforcement of parking ordinances, issuance of the City's various parking permits, This division is also responsible for department purchases, facility maintenance, crime analysis, crime prevention, and grants management.

Captain Wheeless has been with the department for over 21 years.

Field Services

Captain Richard Kowaltschuk supervises the Field Services Division of the department.

The Field Services Division consists of the patrol and traffic officers and is responsible for maintaining public order, deterring law violations, protecting life and property, and apprehending criminal offenders. This is accomplished by four shifts staffed with a Sergeant, a Corporal and Police Officers. Each shift works a twelve-hour workday and is responsible for patrol and emergency services to the community.



Captain Kowaltschuk's role is to develop and implement policies that facilitate the most effective application of neighborhood policing strategies. He helps develop and evaluate expected and actual outcomes from the efforts of the patrol sergeants, regularly examines what neighborhood policing objectives are working, clarifies the means of measuring results, and implements policies to facilitate the achievement of desired outcomes.

Captain Kowaltschuk has been with the department for over 37 years.



Administrative Sergeant

Sergeant Mike Neff oversees administrative, technical and supervisory tasks related to staff support for the department. He supervises the Dispatch Center and the Records Division. He works closely with staff with parking permit policies, procedures, and enforcement. In addition he works with outside vendors to maintain and upgrade the department's technical and tactical equipment through budget funding, State, and Federal Grants. As with most agencies, budgets restraints continue to be a challenge for police agencies across the nation and South Pasadena is no exception. As we work with Law Enforcement venders we are routinely requested to beta test products. During 2012, we have been very successful obtaining several hundred thousand dollars in funding for "First Responders". Without these funding sources our agencies wouldn't have the opportunity to purchase the needed safety equipment for our officers. Equipment funded includes:

- 2012 Tahoe (outfitted to operate tactical operations and natural disasters)
- ALPR (automated license plate reader)
- Radios (operating on the ICIS system)
- Tactical Equipment (rifles, tactical shields, and TASERS and radios)
- 9-1-1 Communications (upgrades for computer, radios, headsets)
- Online Software (Subpoena program, and File police reports online software)
- Patrol Equipment (cameras, radar guns, alcohol sensors, TASERS)
- Load bearing vest for each officer. (load bearing vests help redistribute the weight off the officer's back to throughout the officer's chest)





Police Assistants

Police Assistants (also called “Dispatchers”) are full time/part time, non-sworn personnel and handle communication responsibilities that include emergency and routine telephone calls for law enforcement service.

Police Assistants monitor radio transmissions for 911 emergency calls and maintain radio contact and status of officers in the field. A detailed record of each service request and action is recorded and documented in CAD. Additional duties include receiving reports and complaints from the public, entering, updating and retrieving information from state and national computer databases and providing direction and instruction for parking enforcement. When necessary, clerical and administrative tasks are completed.

Police Assistants are a valuable part of the South Pasadena Police Department insuring community and officer safety.

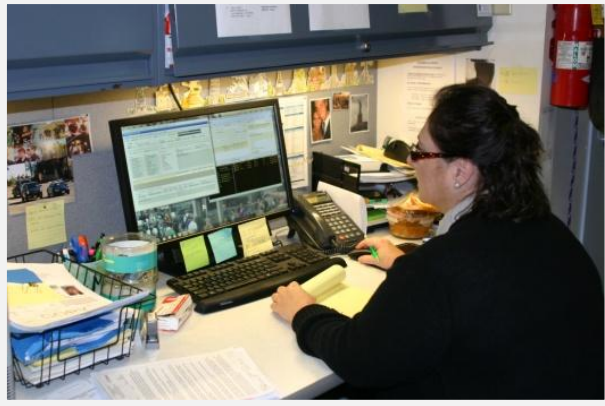




Record Clerks

Record Clerks are a part of the Support Staff and perform specialized police-related records management activities. Record Clerks are responsible for managing and issuing the various different parking permits issued throughout the City. Record Clerks works closely with citizens and the vendor to guarantee permits are issued in a timely and accurate manner. Clerks assist citizens at the counter with many varied requests some of which include clearance/police report requests, vehicle impounds, resolving parking issues, contesting citations and ink fingerprinting. Non-emergency telephone calls are handled in Records and re-routed if necessary.

Additionally, clerks' processes paperwork of arrested people for submission to the District Attorney's Office, oversees and issues electronic subpoenas for witnesses and officers and electronically preserves and archives all police reports.



Record Clerks

Administrative Secretary

The Administrative Secretary provides support services to the Chief of Police. The Administrative Secretary prepares agendas, processes accounts payable, maintains personnel files, schedules the chief's appointments and meetings, and other support duties.

The Administrative Secretary also supervises the School Crossing Guard program, including recruitment and training.

Esther Delinko is the Administrative Secretary and has been with the department for 33 years.



Support Services Assistant

Peggy Grangetto is the Support Services Assistant (SSA), which is a non-sworn position that provides valuable support to the police department.

The SSA has multiple responsibilities, which include:

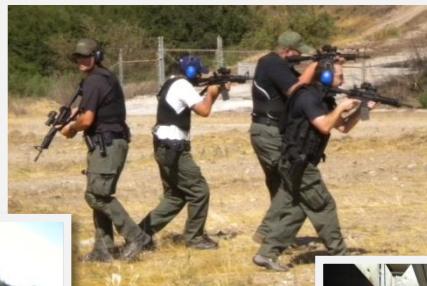
Recruitment – The SSA recruits new police employees (officers, police assistants, cadets, reserves, etc.) develops and distributes job announcements, administers written, physical fitness, oral interviews, background, psychological, medical testing, background investigations and distributing of required equipment.

Property/Evidence Management – Manages the department's property/evidence room including the receiving, processing, storing, maintaining and releasing of property/evidence. The SSA also arranges the auction of unclaimed property, weapon, ammunition and narcotic disposal.

Department Training – Arranges required annual training per the California Peace Officers Standard and Training for department personnel. Officers are required to continue their training throughout their career on topics related to their position: shooting, vehicle pursuits, legal updates, crowd control, arrest and control, traffic enforcement, communications and tactical exercises.



Officer securing evidence



Officers attending various training throughout 2012



Reserve Officers



The South Pasadena Police Reserve Officer Program continues to augment the full-time officers.

Comprised of volunteers, Reserve Officers perform the same duties as regular full-time officers and volunteers a minimum of 16 hours per month. Reserve Officers must undergo the same hiring requirement as regular full-time officers, complete a thorough background check, a basic police academy, and a rigorous in-field training with an assigned Field Training Officer.

The Reserve organization has volunteered over 488,000 hours to the city and averages about 3,000 hours a year. It has its own command staff (Captain, Lieutenant, Sergeants) and is supervised by the Office of Professional Standards Sergeant.

Reserve Officers not only assist with patrol and DUI checkpoints, but also specialized events such as the Fourth of July Parade and Firework show, Tiger Run, high school football and basketball games, and other special city events throughout the year.



Originally created in 1942 under the name of the "South Pasadena Auxiliary Police", Auxiliary Officers were the third officer in a police car carrying nothing more than a flashlight and a baton. In 1945, the Auxiliary Officers were changed to "Reserve Officers" with authority to carry firearms. In 1962, the City of South Pasadena officially established a Police Reserve organization setting the maximum number of personnel at fifty officers.

Two of the most notable Reserve Officers to be employed by the South Pasadena Police Department is current Los Angeles County Board of Supervisor Michael D. Antonovich and current Police Chief Joseph F. Payne.

Today the Reserves continue to be a professional organization with a staff of 18 officers including a Bloodhound K-9 Officer. The South Pasadena Police Department looks to its Reserve organization as a great resource for experience that currently fifty percent of its regular officers were former Reserve Officers with the department.

In 2012, two reserve officers were hired, Chris Perez (who also is employed as a cadet with the department) and Ian Malovos.



Cadets

Police Cadets are part-time employees and perform a variety of duties in support of the police department. Duties include traffic control, assist the public at the front counter, administrative duties, taking reports, parking control enforcement, station tours and assisting in dispatch. In 2012, the department employed nine cadets.

Cadets are non sworn law enforcement officers and do not attend a police academy, or carry firearms.

Cadets are hired as young as 16 years of age and the program introduces them to the fundamentals of police work in preparation for a career in law enforcement. The department utilizes the Cadet program as a resource pool from which Reserve or full-time Officers may be filled.

Many of the cadets are still enrolled in school while working part-time. Five of the cadets sponsored themselves through academies in 2012 while still employed as cadets with the department. Cadets Joseph Hernandez and Chris Perez were later hired in 2012 as South Pasadena Police Reserve Officers.

The five cadets that graduated from academies in 2012 are:

- Joseph Hernandez, Riverside County Sheriffs Academy
- Mike Mejia, San Bernardino County Sheriffs Academy
- Chris Perez, Orange County Sheriffs Academy
- Ernie Perez, Riverside County Sheriffs Academy. Resigned in 2012 to accept a full-time position with San Bernardino County Probation.
- Mark Umutyan, Fullerton College Police Academy





2012 Annual Report



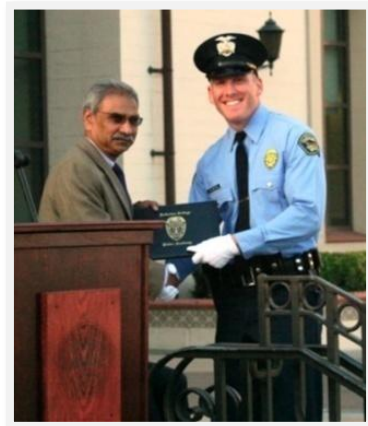
Cadet Joe Hernandez who was also hired as a SP Reserve Police Officer



Cadet Ernie Perez, who was hired by San Bernardino County Probation



Cadet Mike Mejia graduating from San Bernardino County Sheriff's Academy



Cadet Mark Umutyam graduating from Fullerton College Police Academy



Cadet Chris Perez who was also hired as a SP Reserve Police Officer



Police Chaplain

Dan Bricker is the department's chaplain and is a non-sworn, volunteer. As the department's chaplain Dan Bricker is charged with providing support and encouragement for all sworn and non-sworn personnel in the department. This includes counseling as well as any religious functions that might be deemed necessary.

Chaplain Bricker routinely rides with officers offering his assistance when needed. Chaplain Bricker has assisted in death notifications, sobriety checkpoints and invocations at special events.

Chaplain Bricker is also Assistant Coordinator for the Los Angeles County Area C Chaplains Association.



Crossing Guards



Crossing Guards play an important role in traffic safety for children. They are part-time employees who assist children cross streets safely during morning and after school hours.

The presence of Crossing Guards at intersections help ease the concerns of parents, children and motorists regarding pedestrian safety. Children depend on Crossing Guards to help guide them across busy intersection safely.

Crossing Guards are not enforcement officers, but are encouraged to take note of erratic and dangerous drivers. Crossing Guards must be attentive at all times to ensure the safety of pedestrians.

The city employs 12 Crossing Guards, each responsible for a specific intersection near elementary schools.

Crossing Guards are provided training, a reflective safety vest, hat and a hand-held stop sign so they can be easily seen by motorists and pedestrians.





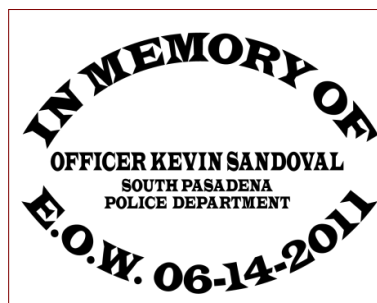
Officer Kevin Sandoval Remembrance Day

On June 14, 2012 the South Pasadena Police Department held a Remembrance Day in honor of Officer Kevin Sandoval. It was exactly one year from the date that Officer Kevin Sandoval died in the line of duty in a joint tactical training exercise with the Pasadena Police Department.

The ceremony marked a bronze plaque in the name of Officer Kevin Sandoval that was mounted in front of the station, below Officer Ray E. Rogers (the first South Pasadena Police Officer killed in the line of duty in 1944). In addition there was a word of remembrance by city dignitaries, a presentation of a Memorial Book and Framed Photo to the Sandoval Family and a dedication to Officer Sandoval on the police department's Peacekeeper (armored vehicle).

The ceremony was attended by officers of the police and fire department, city employees, city officials, police chiefs from various agencies, dignitaries, officers and deputies from surrounding agencies and community supporters.

Pasadena Police Department assisted with the ceremony and Kevin Sandoval's family provided lunch for all in attendance.





National Police Week

Police Unity Tour

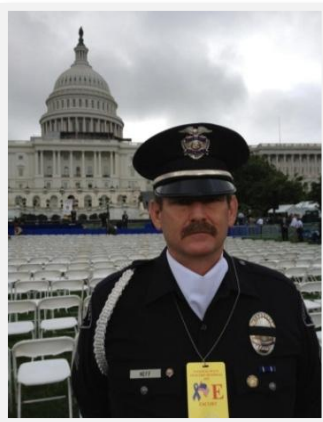
National Police Week is an annual event that was established in 1962 by President John F. Kennedy. It designates May 15th as Peace Officers Memorial Day and the week in which that date falls as "Police Week".

Each year, thousands of law enforcement officers from around the world unite in Washington, D.C. to participate in a number of planned events which honor those law enforcement officers who have lost their lives in the line of duty. One of the largest events is the Police Unity Tour.



The Police Unity Tour was created in 1997 to help raise awareness of Law Enforcement Officers that have died in the line of duty and to help raise funds for the National Law Enforcement Officer's Memorial and Museum. In 2012, South Pasadena Police Sergeant Tony Abdalla and 1,500 other law enforcement officers from across the country rode 300 miles in three days, from New Jersey to Washington D.C. and raised over 1.65 million dollars to the National Law Enforcement Officers Memorial Fund. In honor of Officer Kevin Sandoval, a jersey that was worn by Sergeant Abdalla during the Police Unity Tour was later presented to Officer Kevin Sandoval's family.

This year representatives from the South Pasadena Police Department and family from Officer Kevin Sandoval's family were guests in National Police Week. Officer Kevin Sandoval's family was among those honored by the President of the United States as one of those officers that have made the ultimate sacrifice. Sergeant Michael Neff was a family escort for the Sandoval family and Officers Juan Salcido and Jose Corney were part of the honor guard.



Sergeant Michael Neff the family escort



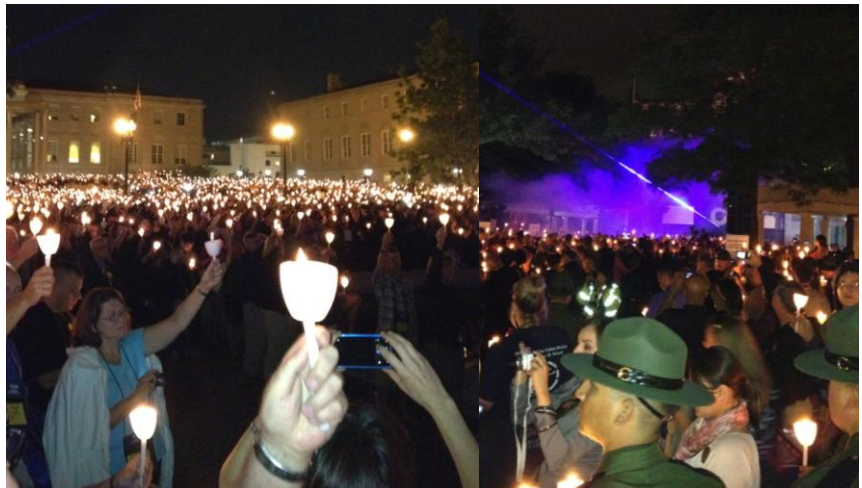
Officer Kevin Sandoval's mother and President Obama



Sergeant Michael Neff escorting Officer Kevin Sandoval's parents to President Obama



Chief Payne, Officers Corney and Salcido at state capitol ceremonies with Sandoval Family



24th Annual Candlelight Vigil in Washington D.C., May 13, 2013



Sergeant Tony Abdalla (second to the left)



Sandoval Family and SPPD Officers at the Candlelight Vigil, Officer Corney and Salcido assigned as Honor Guard Detail



Concluding the ride in Washington DC



Sergeant Abdalla presenting the Sandoval family with a jersey he wore during the Police Unity Tour ride



We Are On The Web!

The South Pasadena Police Department added additional online features to their website, which makes it easier for residents to conduct business at their convenience. This also relieves officers to respond to other calls for service.

Online Police Reporting

<http://www.ci.south-pasadena.ca.us/police/reports.html>

Residents now have the ability to make certain police reports online, with the added ability to print a temporary copy of the report. Once reviewed and approved by the police department, the report will be assigned for investigation.



Obtain Traffic Accident Reports Online

<http://southpasadenaca.policereports.us/>

Motorists that have been involved in a traffic accident can now obtain a copy of the report online. This convenience helps insurance companies' process claims more quickly.



Obtain Crime Reports Online

<http://southpasadenaca.policereports.us/rar.php>

Victims of crimes can obtain copies of crime reports online.



Purchase Overnight Parking Permits Online

<https://www.paymycite.com/spasadena/parkingpermit.aspx>

You can now purchase and print overnight parking permits online.

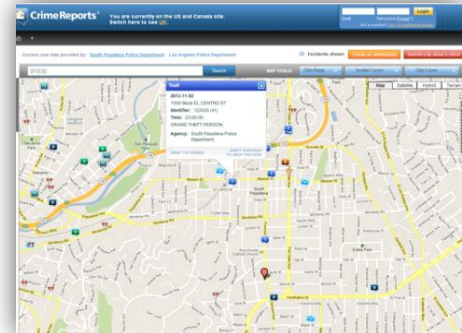




Other Available Online Services

www.crimereports.com

Know about crime in your neighborhood. Crimereports.com maps the locations of crime in the city with the ability to submit crime tips anonymously.



www.nixle.com

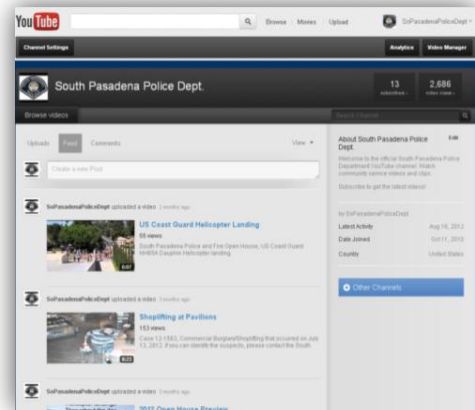
Get crime alerts quickly through your cellphone, or through email



YouTube

www.youtube.com/user/SoPasadenaPoliceDept

See our YouTube channel to help identify suspects in surveillance and other public relation videos.



Twitter

<https://twitter.com/SoPasPD>

Follow us on Twitter





2012 Annual Report

Facebook

www.facebook.com/pages/South-Pasadena-Police-Department/100828809983718

Become facebook friends with us



Weekly Crime Summary

Know what is going on in the community. Subscribe to receive the Weekly Crime Summary.



Neighborhood Watch Newsletter

View the latest monthly newsletter and get crime prevention tips on the latest crimes. Subscribe to receive the Neighborhood Watch Newsletter.



South Pasadena Police Department

www.ci.south-pasadena.ca.us/police

All the online services and more information can be obtained through the police website.





Community Appreciation

