

South Pasadena Police Department  
***2014 Annual Report***

Arthur J. Miller  
Chief of Police

# TABLE OF CONTENTS

Message from the Chief .....	3
Mission Statement/Core Values .....	4
Leadership History .....	5
Command Staff .....	6
Employee Retirements/Resignations .....	7
New Employees .....	8
Employee Promotions .....	9
Employee Assignments .....	10
Organizational Chart .....	11
Department Organization .....	12
Part One Crimes .....	13
Patrol .....	25
Detectives .....	27
Traffic Unit .....	31
DUI Enforcement .....	32
K9 .....	33
Special Enforcement Team .....	35
Bicycle Unit .....	37
Foothill Air Support Team .....	38
Honor Guard .....	39
Administrative Sergeant .....	40
Office of Professional Standards .....	41
Support Services Assistant .....	43
Police Assistants .....	44
Records Clerks .....	45
Cadets .....	46
Chaplain .....	47
Administrative Secretary .....	48
Crossing Guards .....	49
Reserves .....	50
Predictive Policing .....	51
Online Reporting .....	52
Community Involvement .....	53
Department Inspection .....	57
Awards Luncheon .....	58
Public Safety Commission .....	60
In Memory .....	61
We are on the Web .....	62
Community Appreciation .....	64
Acknowledgements .....	65



## CITY OF SOUTH PASADENA

POLICE DEPARTMENT

1422 MISSION STREET, SOUTH PASADENA, CA 91030

TEL: 626.403.7270 • FAX: 626.403.7271

WWW.CI.SOUTH-PASADENA.CA.US

Mr. Sergio Gonzalez  
City Manager  
City of South Pasadena  
1414 Mission Street  
South Pasadena, CA 91030

Dear Mr. Gonzalez:

On behalf of the men and women of the South Pasadena Police Department, I am pleased to present our 2014 Annual Report. 2014 marked a major change within the police department of how we policed the City of South Pasadena. There is no doubt that the crime reduction of 17.8% is remarkable and certainly a great accomplishment. Moreover, the manner in which we strategized to address crime issues by utilizing Predictive Policing, community involvement, focused patrolling and tireless investigations by detectives have been great tools in our success. Our Public Safety Commission strengthened its resolve to work with the police department and support us in every area.

The Parole Realignment Program (Assembly Bill 109) continued to be a burden on communities throughout the state; South Pasadena was not immune. Added to Assembly Bill 109, was Proposition 47 passed by voters in 2104. Prop 47 "Criminal Sentences Misdemeanor Penalties/ Safe Neighborhood and School Act" changes certain felonies to misdemeanor crimes. In doing so, over 30,000 former felons were released back into communities. There was an immediate rise in property crimes, violent crimes including homicides and assaults in our area. Our department is committed to remaining focused and steadfast in our efforts to preventing crimes.

Our Neighborhood Watch program has been reinvigorated and we are dedicated to increasing participation of our community members. The community plays a huge role in crime reduction and we appreciate the efforts of Neighborhood Watch participants.

As we move forward, I will continue to evaluate our programs and make adjustments when necessary. As a department we all are committed to ensuring that our community remains a safe place to live, work and play.

Again, I thank you for your continued support and trust in our Department.

Sincerely yours,

Arthur J. Miller  
Chief of Police

## MISSION STATEMENT

*“The Mission of the South Pasadena Police Department is to provide our community with the safest possible environment using interactive crime prevention methods, public education programs, and the equitable and professional application of the law.”*

## CORE VALUES

**Integrity** – Police officers are entrusted with lives and property. They are exposed to situations where, if lacking a high level of integrity, they can take advantage of that trust. The community must have confidence that their officers have the highest level of ethics and morals. Personal integrity is fundamental in the prevention of corruption. Police officers have a solemn obligation to be honest and trustworthy, accurately document probable cause and the circumstances of an arrest in reports and during courtroom testimony, report ethical violations when committed by others, and serve as a role model for the public.

**Quality of Service** – The residents and business owners of South Pasadena have high expectations of the quality of service provided by the South Pasadena Police Department. Historically, the Department has provided this level of service. When handling any type of call for service, criminal or traffic investigation, officers should always provide a level of service they would want their family to receive. They should be guided by what is the right thing to do to solve the problem that resulted in their response.

**Respect for People** – Police Officers must treat all people with as much respect and dignity as the situation allows. Even in a confrontational, adversarial encounter, officers must remain professional and respectful. Respect towards others breeds respect in return. And, respect towards others must begin between co-workers. If employees are not respectful towards each other, they will not be respectful towards the public. All employees must treat each other with respect and recognize that the diversity each employee brings to the South Pasadena Police Department helps to make the Department able to police the diverse community we serve.

**Work Ethic** – The employees of the South Pasadena Police Department are government employees and their salaries and benefits are paid by the public they serve. Taxpayers have the right to expect their government employees to earn the salaries they are paid. All employees are expected to give an honest day's work. The South Pasadena Police Department does not have any unnecessary positions and everyone must be committed to supporting each other to accomplish the goals and objectives of the organization. This requires a firm commitment from each and every employee.

## LEADERSHIP HISTORY

The following is a list of City Marshals and Chiefs that have led the South Pasadena Police Department since 1888.

### City Marshal

**Amman Cobb**  
March 1888 to June 1888

**Martin B. Selman**  
June 1888 to February 1889

**E. Peters**  
February 1889 to April 1894

**Isaac Peel**  
April 1894 to October 1895

**George Wilson**  
October 1895 to April 1896

**M.B. Reid**  
April 1896 to July 1907

**William H. Johnston**  
July 1907 to April 1916

### Chief of Police

**Frank Higgins**  
April 1916 to April 1942

**Everett Setzer**  
October 1942 to October 1950

**Robert Blakely**  
October 1950 to October 1952

**Clifton Brown**  
December 1952 to June 1960

**Melvin Viney**  
October 1960 to August 1976

**Gary Brown**  
August 1976 to May 1977

**Samuel Buntyn**  
June 1977 to December 1985

**William Reese**  
December 1985 to December 1990

**Thomas Mahoney**  
February 1991 to April 1997

**Michael Berkow**  
July 1997 to July 2001

**Daniel Watson**  
January 2002 to July 2010

**Joseph Payne**  
September 2010 to February 2013

**Arthur Miller**  
February 2013 to Current

# SOUTH PASADENA POLICE COMMAND STAFF



**DeAnn Wheelless**  
Captain



**Arthur J. Miller**  
Chief of Police



**Michael Neff**  
Acting Captain



**Brian Solinsky**  
Office of  
Professional Standards



**Robert Bartl**  
Detective Sergeant



**Tony Abdalla**  
Patrol Watch Commander  
SET Commander



**Matthew Petersen**  
Patrol Watch Commander



**Jim Valencia**  
Patrol Watch Commander



**Matthew Ronnie**  
Patrol Watch Commander

## EMPLOYEE RETIREMENTS



**Officer Myles Fowlis**  
Service Dates  
1999-2014



**Reserve Officer  
Tony Lucero**  
Service Dates  
1995-2014



**Reserve Officer  
Mike Conant**  
Service Dates  
1992-2014

## EMPLOYEE RESIGNATIONS



**Cadet Chris Browne**  
Service Dates  
2005-2014



**Cadet Jerry Borja**  
Service Dates  
2011-2014



**Clerk Marlene Arreola**  
Service Dates  
2004-2014

## EMPLOYEES – NEW HIRES



**Chris Perez**  
Hired as Police Officer



**Mike Mejia**  
Hired as Reserve  
Police Officer



**Sean Ayala**  
Hired as Parking  
Control Officer



**Ricky Sze**  
Hired as a Cadet



**Gary Sze**  
Hired as a Cadet



**Issac Gutierrez**  
Hired as a Cadet



## EMPLOYEES – PROMOTIONS



**Matthew Ronnie**  
Sergeant – Patrol Watch Commander



**Janee Hannible**  
Promoted as Police  
Assistant



**Ryan Hang**  
Promoted as  
Police Clerk

## EMPLOYEES - ASSIGNMENTS



**Michael Neff**  
Assigned as Acting Captain  
Field Operations/Support Services Division

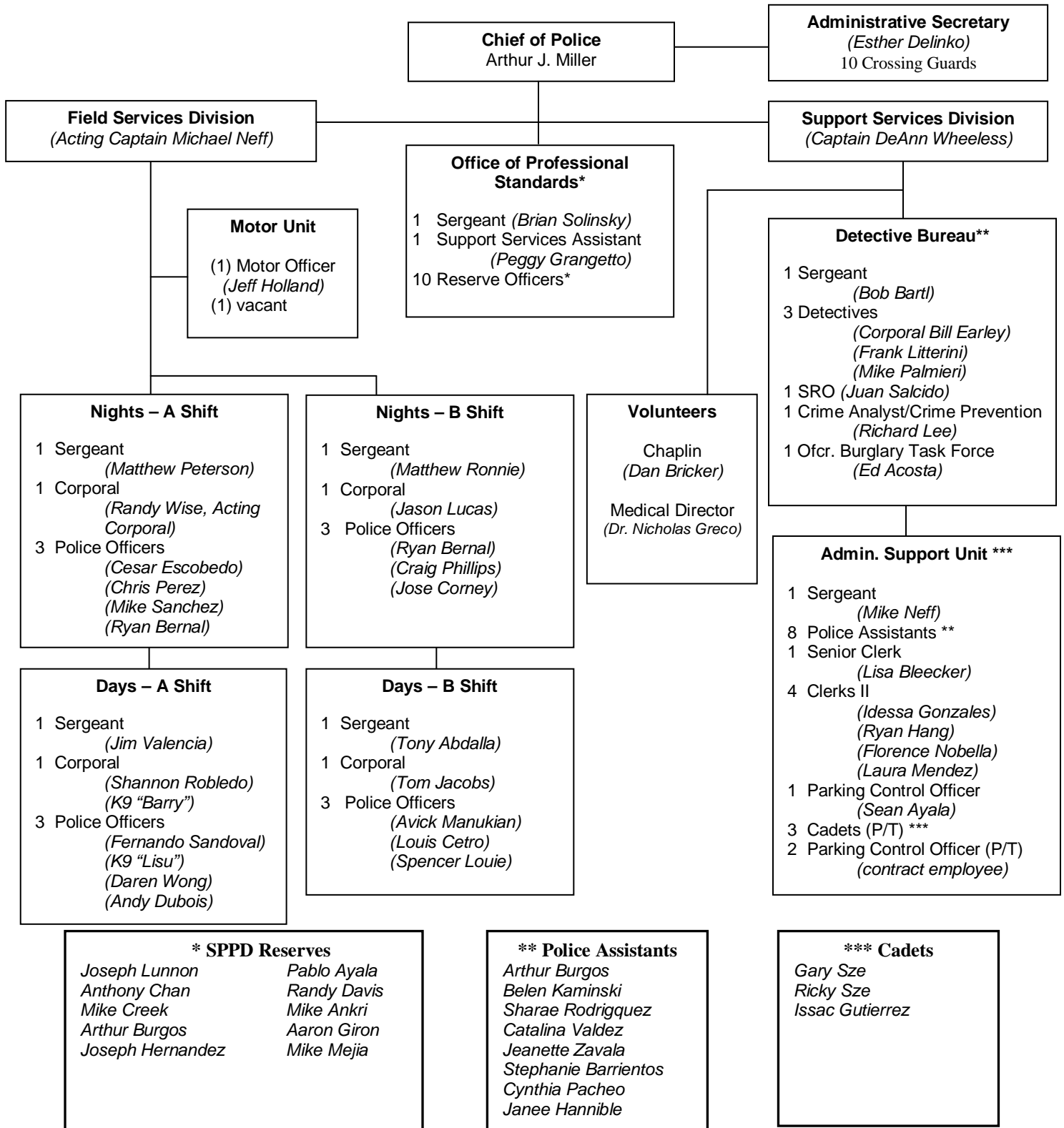


**Avick Manukian**  
Assigned as Special  
Enforcement Team Operator



**Ryan Bernal**  
Assigned as Special  
Enforcement Team Operator

## South Pasadena Police Department 2014 Organizational Chart



## DEPARTMENT ORGANIZATION

The South Pasadena Police Department is comprised of 32 sworn officers, 16 non-sworn personnel, three part-time non sworn personnel, ten reserve officers, one volunteer chaplain, one volunteer medical director and ten crossing guards.

The department is divided into two divisions, Support Services and Field Services, with a Captain supervising each Division.

Captain DeAnn Wheelless supervises the Support Services Division, which is responsible for providing service to the public and support to the officers. This includes Records, Detectives, Communications, Evidence/Property, Parking Enforcement, Volunteers and the Emergency Operations Team. Captain Wheelless must also oversee department purchases, station maintenance, and budget and grant managements.

In 2014, Sergeant Michael Neff served as the Acting Captain supervising the Field Services Division in addition to serving as the Administrative Sergeant. The Field Services Division consists of patrol and traffic officers as well as the specialized units of the department (K9, Bicycle Unit, Special Enforcement Team).

Below shows the staffing of the police department:

Chief Of Police	1
Captain	1
Sergeants	7
Corporals	4
Officers/Detectives	19
Police Assistants	8
Clerks	5
Support Services Assistant	1
Administrative Secretary	1
Cadets (part-time)	3
Parking Control Officer	1
Parking Control Officers (contract service)	2
Reserve Officers	10
Volunteers (chaplain and medical director)	2
Crossing Guards	10

## PART ONE CRIMES

In 2014, there was a decrease of 17.8% in Part One Crimes. By the raw numbers, there were 571 Part One crimes in 2014 compared with 695 Part One Crimes in 2013. The chart below shows the comparisons of Part One crimes between 2013 and 2014:

	<b>2013</b>	<b>2014</b>	<b>% Change</b>
<b>Homicide</b>	0	1	Not Calculable
<b>Rape</b>	3	4	33.3%
<b>Robbery</b>	16	10	-37.5%
<b>Aggravated Assaults</b>	93	81	-12.9%
<b>Burglary</b>	-	-	-
<b>Residential</b>	134	96	-28.4%
<b>Commercial</b>	36	19	-47.2
<b>Larceny-Theft</b>	342	327	-4.4
<b>Stolen Vehicles</b>	51	32	-37.3
<b>Arson</b>	20	1	-95%
<b>Total</b>	<b>695</b>	<b>571</b>	<b>-17.8%</b>

It should be noted that because we are calculating with small numbers, the percentile increases/decrease are large which may not reflect the true raw numbers.

### **CRIME CLEARANCE**

The Crime Clearance rate for 2014 was 15.6%, which was an increase from 2013 (14.7%). The 15.6% clearance rate exceeds the recommended Uniform Crime Reports Crime Clearance rate standard of 14%.

Clearance rates are cases where the suspect has been identified and the case solved either through an arrest, filing or cleared by exceptional means.

### **HOMICIDE**

There was one homicide that was reported in 2014, however the incident occurred back in 2008. The victim was hit in the head with a baseball bat and the case went to court. The suspect was found guilty and is currently serving a prison sentence. The victim was in a coma and did not fully recover and succumbed to the injury in May 2014.

**RAPE**

Rapes were the only Part One category that increased in 2014. Four occurred in 2014, compared to three in 2013, or an increase of 33.3%.

As in 2013, all four incidents were categorized as “Non-Stranger” relationships. The suspect was known to the victim, either through a friendship or acquaintance relationship.

**ROBBERY**

There was a decrease of 37.5% in robberies in 2014, ten occurred in 2014 compared to 16 in 2013. Out of the ten robberies that occurred in 2014, the suspects were arrested in six of them.

Unlike 2013, robberies that occurred at businesses were the most common.

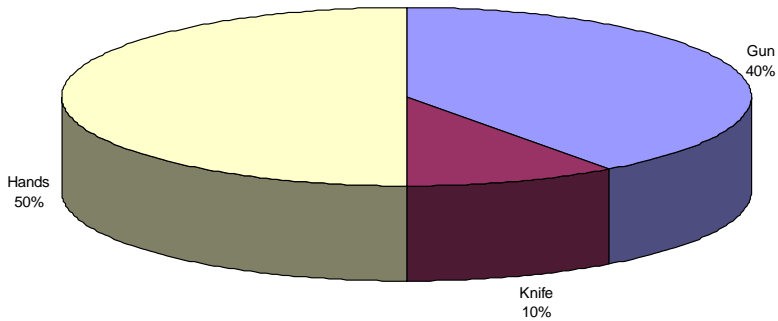
Five of the six robberies that occurred at businesses were the result of a shoplifting that turned into a robbery as the suspect fought with store employees (a robbery is defined as taking property by force or fear). Four of the robberies occurred at markets with the fifth occurring at Big Lots. The remaining robbery occurred at a gas station where the suspect simulated a gun and demanded money. This suspect was later arrested by the Los Angeles Police Department Robbery/Homicide Division and was connected to numerous other gas station/convenience store robberies throughout Los Angeles and Orange County.

Three of the robberies occurred on the street, with one being an ex-girlfriend taking a cell phone from the victim’s (ex-boyfriend) hand. In one of the street robberies the suspects wore a mask and hit the victim in the face, taking cash from the victim. In the last street robbery, the suspect used an airsoft gun and demanded a cigarette from the victim.

One robbery occurred on the campus of the South Pasadena High School where the suspect used a knife to take the victim’s cell phone. The suspect was arrested in this incident.

Hands were the most common type of weapon used in the robberies (used in five of the robberies), followed by a gun (seen and simulated) (used four times) and lastly a knife (used once).

The chart below shows the weapon used in robberies:



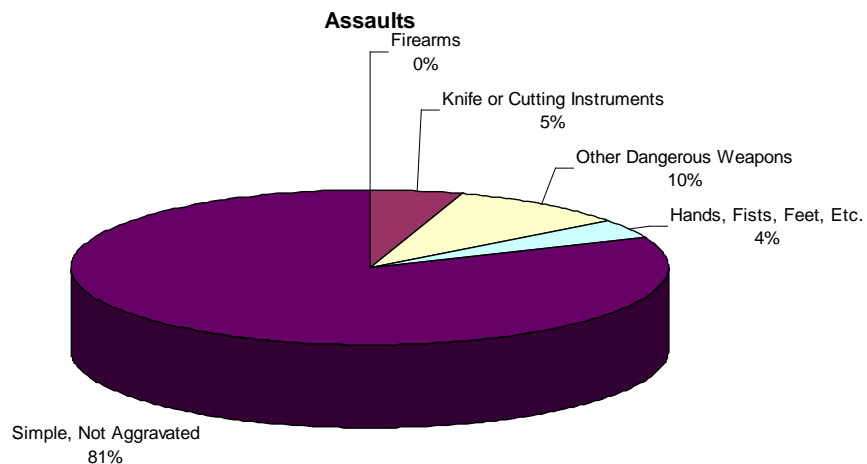
## **ASSAULTS**

In 2014, there was a 12.9% decrease in Assaults (81 occurred in 2014 compared to 93 in 2013).

Assaults are divided into five categories depending on the weapon used to inflict the bodily injury. The categories are firearm, knife or cutting instrument, other dangerous weapon, hands (fists, feet and teeth) and other simple, not aggravated. Domestic Violence is also included in the Assault category. Domestic related assaults accounted for 57% of the assaults and 96% of the suspects in the assaults were known to the victim, domestic, family, friends, roommates, etc.

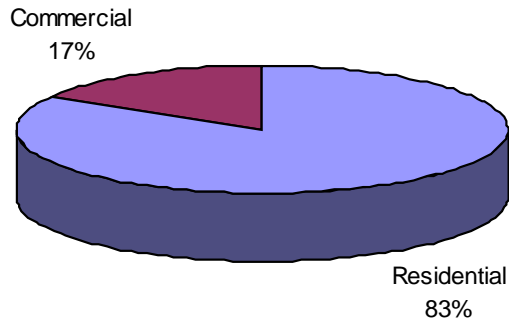
Like in 2013, in 2014 the category of “other simple, not aggravated assaults” accounted for 81% of the types of assaults. Hands were the most common weapon used which covers everything from a push to grabbing the victim.

The chart below shows the types of assaults for 2014:



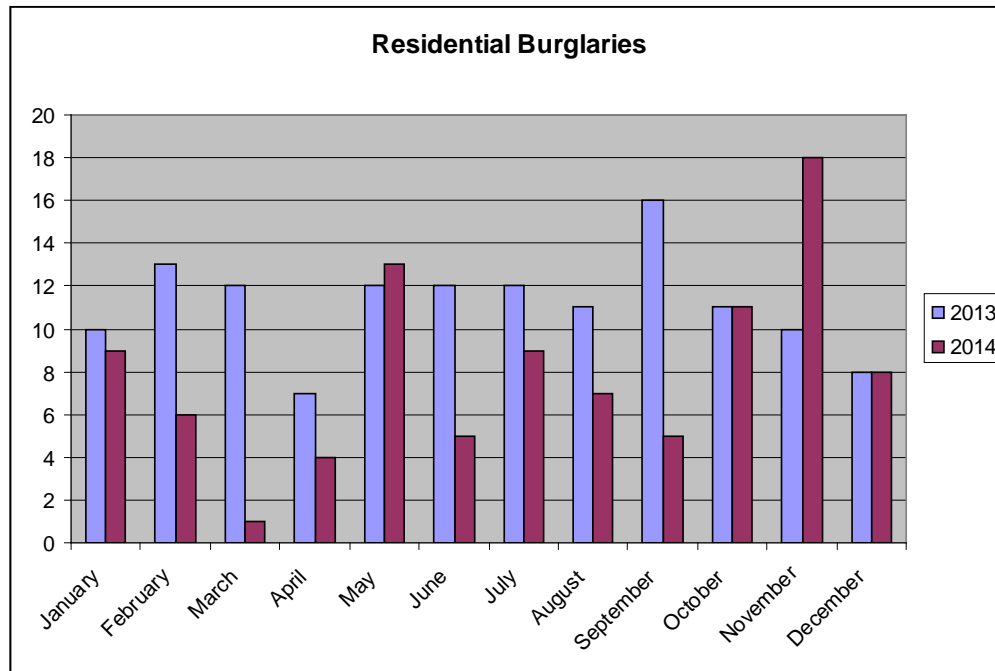
**BURGLARIES**

In 2014, there was a decrease of 32% in burglaries which include both commercial and residential. Residential burglaries accounted for more than three-fourths of the burglaries. The chart below shows the breakdown for 2014 between commercial and residential burglaries:



Residential burglaries decreased 28% in 2014, 96 occurred in 2014 and 134 in 2013. Commercial burglaries also decreased in 2014, 19 occurred in 2014 and 36 occurred in 2013.

The chart below shows the number of residential burglaries for each month between 2013 and 2014:





**Burglaries by Area**

The city is divided into four areas (called "Beats") for reporting purposes, with Monterey Road dividing the north and south, and Meridian Avenue dividing the east and west. Beat One consists of the northwest area of the city, Beat Two the northeast area, Beat Three the southwest and Beat Four the southeast area.

As in previous years, the south area of the city had the most number of residential burglaries accounting for over 50% of the burglaries. However, unlike previous years, Beat Three (Monterey Hills area) had the highest number of residential burglaries for 2014 instead of Beat Four.

The chart below shows the number of residential burglaries by beat area between 2013 and 2014:

<b>Beat Area</b>	<b>2013</b>	<b>2014</b>	<b>% Change</b>
One	26	20	-23%
Two	21	22	5%
Three	30	32	7%
Four	57	22	-61%

The method used by burglars to gain entry by force (prying a door, window or smashing a window) into a residence has continued to increase each year. In 2014, forced entry was used in 49% of the burglaries. This is an increase from 2013, when forced entry was used in 34% of the burglaries. Entry by no force has declined each year but still remains over 50% of the method used to gain entry. Entry made with no force includes an opened window, unlocked window/door and in one burglary the burglar found a hidden key. There was one attempted burglary where the suspects attempted to scam the elderly victim. The first suspect distracted the elderly victim at the rear yard while the second suspect made entry into the victim's residence. The victim was smart and thought he was being scammed and returned inside the residence and discovered the second suspect. Both suspects left with no loss.

Since 2012, alarms at residences accounted for only 10% of the homes burglarized. This shows that a house alarm can reduce your chances of a burglary by 90%! In 2014, 11 of the residences had an alarm, although three of them were not turned on.

**LARCENY/THEFT**

Larceny/Thefts are simple thefts that include shoplifting, thefts from unlocked vehicles, auto burglaries, thefts of vehicle parts, bicycles.

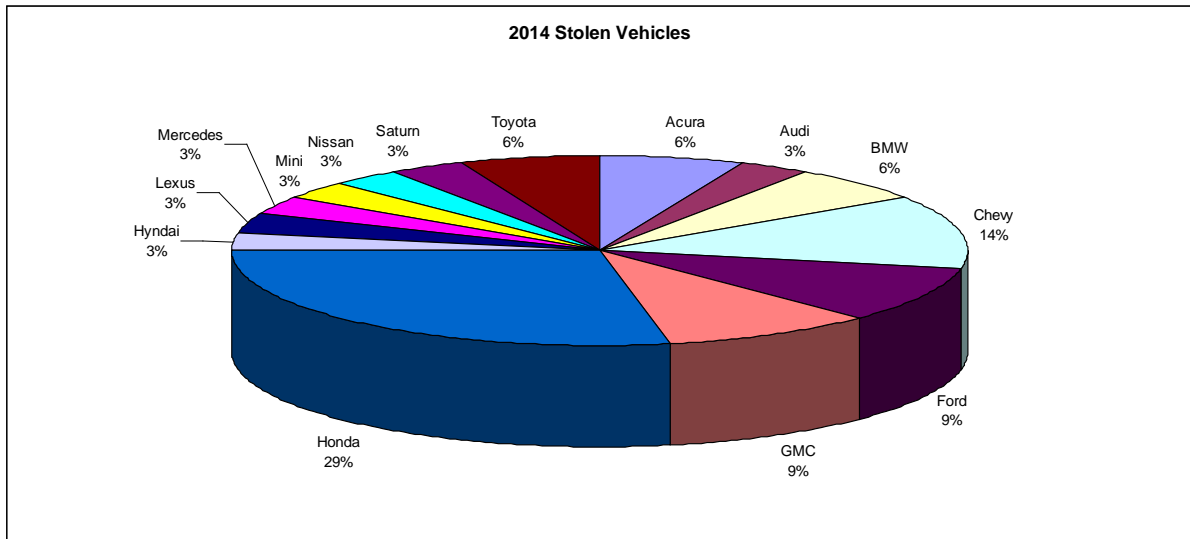
Larceny/Thefts decreased 4.4% in 2014. There were 327 Larceny/Thefts in 2014 compared to 342 in 2013. As in the previous two years, bicycles, thefts from unlocked vehicle, auto burglaries and shoplifting from stores were the most common types of thefts in 2014.

**STOLEN VEHICLE**

Stolen vehicles decreased 37.3% in 2014. In 2014 there were 32 vehicle stolen, compared to 51 stolen in 2013.

For over a decade, Hondas continue to be the most popular vehicle stolen in South Pasadena, however the percentage is decreasing. In previous years, Hondas would account for near 50% of all vehicles stolen in the city, but in 2013, Hondas accounted for 35% and in 2014, Hondas accounted for 29%. Also in the past, Toyotas and Acuras were the second and third most popular vehicle stolen respectively; however we have started to see a rise in domestic vehicles stolen. In 2014, domestic made vehicles were the second and third most popular vehicles stolen in the city pushing Toyota and Acura down the list.

The chart below shows the breakdown of vehicle by make:



By make and model, the Honda Accord again was the most popular vehicle stolen followed by the Chevy Silverado, GMC Yukon and BMW X5. The mid-1990s Honda Accord also continues to be the popular vehicle stolen by year.

**Premises**

Vehicles parked on the street also continue to be the most popular location where vehicles were stolen. In 2014, vehicles parked on the streets accounted for 66% of where the vehicle was stolen from. This is an increase from 2013 where streets accounted for 52% of where vehicles were stolen from.

Vehicles parked in driveways were the second type of premises where vehicles were stolen from followed by carports and parking lots.

Multi-unit residential complexes (apartments and condominiums) continue to be the most targeted areas where vehicles were stolen accounting for 54%. In 2013, they accounted for 59%. This is largely due to the lack of secure parking and residents have to park on the streets or carports. Single family residences accounted for 33% where vehicles were parked on the street or driveway, followed by commercial parking lots accounting for 13%.

### **Stolen Vehicle Recovery**

Like in previous years, over half of the vehicles stolen in the city continue to be recovered fully intact with minor or no damage and not stripped. This indicates that the suspect(s) stealing vehicles in the city are doing so for "joyriding" purposes. Of the 32 vehicles stolen in 2014, as of January 20, 2015, seven cars have not been recovered.

### **ARSONS**

Arsons had the greatest change in 2014. Arsons decreased 95% with only one arson occurring in 2014, compared to 20 in 2013. The 20 arsons that occurred in 2013 was the result of a serial arsonist who was arrested. The one arson that occurred in 2014 was from the result of a female transient who set fire to some landscaping and also burned herself. Unfortunately, the female transient was badly burned and died from her injuries.

**CALLS FOR SERVICE**

The following pages show the 2013-2014 Part One Crime and various categories of calls for service:

**2013-2014 Part One Crimes**

	<b>2013</b>	<b>2014</b>	<b>% Change</b>
<b>Homicide</b>	0	1	Not Calculable
<b>Rape</b>	3	4	33.3%
<b>Robbery</b>	16	10	-37.5%
<b>Assault</b>	93	81	-12.9%
<b>Burglary</b>	-	-	-
<b>Residential</b>	134	96	-28.2%
<b>Commercial</b>	36	19	-47.2%
<b>Larceny-Theft</b>	342	327	-4.4%
<b>GTA</b>	51	32	-37.3%
<b>Arson</b>	20	1	-95%
<b>Total</b>	<b>695</b>	<b>571</b>	<b>-17.8%</b>

**Crime Clearance**

<b>2013</b>	<b>2014</b>	<b>% Change</b>
14.7%	15.6%	6.1%

**Arrests**

<b>Arrests</b>	<b>2013</b>	<b>2014</b>	<b>% Change</b>
Adult	949	916	-3.5%
Juveniles	43	43	No Change
<b>Total</b>	992	959	-3.3%

**Traffic Accidents**

<b>Traffic Collisions</b>	<b>2013</b>	<b>2014</b>	<b>% Change</b>
Injury	75	88	17%
Injury hit and run	4	2	-50%
Non-Injury	53	61	15%
Non-Injury hit and run	25	34	36%
Fatal	0	0	No Change
<b>Total</b>	157	185	18%

**Citations**

<b>Citations</b>	<b>2013</b>	<b>2014</b>	<b>% Change</b>
Citations (moving)	3220	2815	-13%
Parking	10199	7765	-24%
Warnings	9	1	-89%
Others	677	569	-16%
<b>Total</b>	14105	11150	-21%

**Agency Assist**

<b>Agency Assist</b>	<b>2013</b>	<b>2014</b>	<b>% Change</b>
Assist Fire	463	441	-5%
Assist Outside Agency	428	477	11%
Assist Outside Agency 911 Transfer	1401	1597	14%

**Telephone Calls**

<b>Calls</b>	<b>2013</b>	<b>2014</b>	<b>% of Change</b>
<b>Inbound 911 Calls</b>	7099	7857	11%
<b>Inbound Landline Calls</b>	35072	33789	-4%
<b>Total Inbound Calls</b>	42188	41646	-1%
<b>Total Outbound Calls</b>	16246	16287	.2%
<b>Total Inbound/Outbound Calls</b>	58434	57933	-1%

**Selected Calls for Service**

<b>Calls for Service</b>	<b>2013</b>	<b>2014</b>	<b>% Change</b>
Robbery Alarms	85	87	2%
Burglar Alarms (vehicle, residential & commercial)	1134	1219	7%
Domestic Disputes (Domestic Violence, family, boy/girlfriend)	208	210	1%
Suspicious Persons (pedestrian & vehicle)	1378	1219	-11.5%
Extra Patrol	2529	2536	.3%
Traffic Stops	5425	4210	-22%
Special Traffic Enforcement	4	63	11%
Foot Beats	52	55	6%
Vehicles Booted (5 or more park cites)	20	8	-60%
Outside Agency Assist	428	477	11%
Welfare Checks	261	309	18%
Disturbance (parties, families, neighbors, business disputes)	1041	958	-8%
DUI Arrests	76	52	-31%
Predictive Policing	375	535	43%
K9 Demo	2	8	300%
K9 Deployment	30	101	237%
K9 Training	6	61	917%
Online Reports	152	263	73%
<b>Total CAD Calls</b>	<b>23450</b>	<b>27554</b>	<b>18%</b>

**SOUTH PASADENA POLICE DEPARTMENT - 2014 ANNUAL REPORT**

---

**Part One Crimes**

**2014**

	Robbery			Burglary (commercial & residential)			Larceny			Motor Vehicle Theft		
	2013	2014	%	2013	2014	%	2013	2014	%	2013	2014	%
January	0	2	Not Calc	12	11	-8%	29	35	21%	7	1	-86%
February	1	2	100%	15	11	-27%	25	18	-28%	3	5	67%
March	1	0	-100%	17	1	-94%	25	44	76%	0	4	Not Calc
April	0	0	Not Calc	9	6	-33%	17	30	76%	3	4	33%
May	1	2	100%	24	14	-42%	31	25	-19%	4	3	-25%
June	1	0	-100%	13	5	-62%	25	19	-24%	4	2	-50%
July	3	0	-100%	15	9	-40%	24	24	0%	5	2	-60%
August	3	2	-33%	13	8	-38%	25	23	-8%	7	1	-86%
September	1	0	-100%	18	9	-50%	28	28	0%	5	3	-40%
October	1	0	-100%	14	13	-7%	43	28	-35%	6	2	-67%
November	2	0	-100%	11	18	64%	42	34	-19%	3	4	33%
December	2	2	0%	9	10	11%	28	19	-32%	4	1	-75%
<b>TOTALS</b>	<b>16</b>	<b>10</b>	<b>-38%</b>	<b>170</b>	<b>115</b>	<b>-32%</b>	<b>342</b>	<b>327</b>	<b>-4%</b>	<b>51</b>	<b>32</b>	<b>-37%</b>
Average	1.3	.8	-38%	14.2	9.6	-32%	28.5	27.3	-4%	4.3	2.7	-37%
ANNUAL												
High	3	2		24	18		43	44		7	5	
Low	0	0		9	1		17	18		0	1	
Mean	1.5	1		16.5	9.5		30.0	31		3.5	3	

**SOUTH PASADENA POLICE DEPARTMENT - 2014 ANNUAL REPORT**

**Part One Crimes (continued)**

**2014**

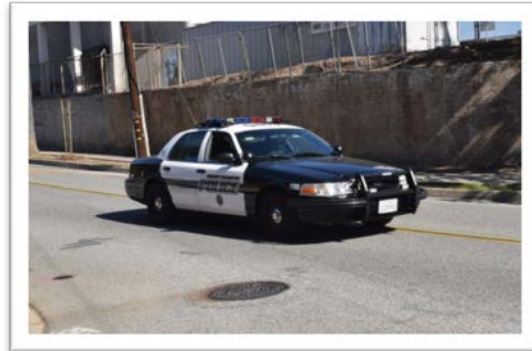
	Murder			Rape			Aggravated Assault			Arson		
	2013	2014	%	2013	2014	%	2013	2014	%	2013	2014	%
January	0	0	0	0	0	Not Calc	7	10	133%	1	0	-100%
February	0	0	0	1	1	0%	6	6	20%	0	0	Not Calc
March	0	0	0	2	2	0%	5	7	0%	3	0	-100%
April	0	0	0	0	1	Not Calc	8	4	60%	15	0	-100%
May	0	1	Not Calc	0	0	Not Calc	7	3	-22%	1	0	-100%
June	0	0	0	0	0	Not Calc	10	6	150%	0	0	Not Calc
July	0	0	0	0	0	Not Calc	13	6	225%	0	0	Not Calc
August	0	0	0	0	0	Not Calc	9	6	200%	0	0	Not Calc
September	0	0	0	0	0	Not Calc	9	10	350%	0	0	Not Calc
October	0	0	0	0	0	Not Calc	6	7	0%	0	0	Not Calc
November	0	0	0	0	0	Not Calc	5	10	0%	0	1	Not Calc
December	0	0	0	0	0	Not Calc	8	6	33%	0	0	Not Calc
<b>TOTALS</b>												
	<b>0</b>	<b>1</b>	<b>Not Calc</b>	<b>3</b>	<b>4</b>	<b>33%</b>	<b>93</b>	<b>81</b>	<b>-13%</b>	<b>20</b>	<b>1</b>	<b>-95%</b>
Average	0	0.083	Not Calc	0.3	0.3	33%	7.8	6.8	-13%	1.7	0.1	-95%
ANNUAL												
High	0	1		2	4		13	10		15	1	
Low	0	0		0	0		5	3		0	0	
Mean	0	.5		1	2		9	6.5		7.5	.5	

YTD	2013	2014	%
Jan-Dec.	<b>695</b>	<b>571</b>	<b>-17.8%</b>



## PATROL

Patrol is the core of the police department and the uniform patrol officers are the most visible personnel of the department. Patrol Officers have a wide variety of duties. They respond to calls for service, patrol the city, enforce traffic laws, conduct preliminary criminal and traffic investigations, conduct initial crime reports, assist detectives in serving local warrants, collect evidence, dust for fingerprints and DNA samples. When a detailed collection of evidence is needed, the Pasadena Police Department's Forensic Team is contacted to assist. Officers also respond to citizen's request for extra patrol, vacation checks and special enforcements.



Patrol Officers work a 3/12 work schedule (three days a week, 12 hours a day). There are four patrol shifts that work seven days a week, 24 hours a day. A patrol shift consists of a Watch Commander who handles day-to-day operations and a minimum of three patrol officers which includes a Corporal to assist with day-to-day operations.

Some officers have double duties serving not only as a patrol officer but also assigned to either the department's Special Enforcement Team or helicopter observer.

Patrol units are equipped with specialized equipment like LoJack and an Automated License Plate Reader (ALPR) which alerts officers to stolen vehicles by scanning vehicle license plates. Four cameras are mounted on the vehicle which can scan numerous license plates simultaneously. The ALPR continues to assist in the recovery of stolen vehicles.

A majority of an officer's time is spent writing accurate police reports. Since the implementation of online reporting, it has greatly assisted officers in spending more time patrolling the streets. Once the reports are approved by the Watch Commander the reports are then processed through the Records Division before being stored digitally. Reports that require further investigations are forwarded to the Detective Bureau.

In 2014, the police department acquired two new Ford Explorers to the patrol fleet. These new police sport utility vehicles (SUV) allows officers to carry more equipment and provide additional safety for the officer. The department's current police sedans will slowly be replaced by the new SUVs as their service life comes to an end.

## **SOUTH PASADENA POLICE DEPARTMENT - 2014 ANNUAL REPORT**

---

The patrol officers can respond to a life threatening emergency call within three to four minutes. This quick response time has allowed the officers to make some notable arrests in 2014:

- Assisted LAPD in searching for a stolen vehicle suspect that crashed in the 5000 block of Collis.
- Assisted South Pasadena Fire Department with a toddler choking on a grape. Officers cleared intersections so the ambulance had a clear road to the hospital which saved the toddler's life.
- Officers responding to a neighbor reporting a burglary in progress led to the apprehension of residential burglars.
- A school threat was made on a social media website which forced the early release of students at the high school. Officers quickly responded to assist in the safe evacuation of students.



**Briefing of patrol officers starts at the beginning of each shift**



**The department's new patrol vehicle  
2014 Ford Explorer**



**A Watch Commander coordinates a perimeter while searching for burglary suspects.**



**Chief Miller speaks to the media regarding the arrests of two students who threatened to shoot students and teachers at the high school**

## DETECTIVE BUREAU

Sergeant Robert Bartl supervises the Detective Bureau and is staffed by a corporal, two full-time detectives, one detective/school resource officer and one detective/crime analyst/crime prevention officer.

The Detective Bureau is the investigative branch of the police department and is primarily responsible for conducting follow-up investigations on criminal cases in order to ensure successful prosecutions. These follow-up investigations include analyzing evidence, interviewing witnesses and preparing and serving warrants. Detectives file criminal cases with the Los Angeles County District Attorney's Office and assist patrol officers in responding to emergency calls for service and arrange extradition of suspects from out of county/state.

Detectives are on-call 24-hours a day and can spend long hours investigating urgent cases. One particular case involved two high school students that had planned a shooting at the school. Detectives worked tirelessly conducting surveillance and investigations on leads before the suspects were arrested.

In addition, the Detective Sergeant conducts background checks on massage employee applicants.

Detective Corporal Bill Earley and Detective Frank Litterini are also certified Arson Investigators which investigates the causes of fires. They are part of the Verdugo-Foothill District which comprises the cities of Burbank, Glendale, Pasadena, Sierra Madre, Monrovia, Arcadia, San Marino, San Gabriel, South Pasadena, Alhambra, Montebello and Monterey Park. In 2014, they investigated ten fires in the Verdugo-Foothill cities and assisted in the successful conviction of a serial arsonist that had set over 20 fires in South Pasadena in late 2013 and early 2014.

Identity Theft continues to be a growing crime and the South Pasadena Police Department takes a proactive approach to prevention. In 2014, Detective Michael Palmieri conducted four Identity Theft presentations to various community groups.



### West San Gabriel Valley Anti-Crime Task Force

The South Pasadena Police Department is part of the West San Gabriel Valley Anti-Crime Task Force (WSGVACTF) and one detective is assigned to the task force. The WSGVACTF is comprised of Arcadia, Pasadena, Monrovia, El Monte, Monterey Park, Alhambra, Montebello, San Gabriel and South Pasadena Police Departments.



The WSGVACTF assists San Gabriel Valley police departments with various operations. Founded in 2012, to provide a more regional task force against burglaries in the San Gabriel Valley, the WSGVACTF has grown to assist in a number of operations, including burglary suppression, surveillances, and warrant service.

WSGVACTF also conducts compliance checks on parolees/probationers/AB 109. In the start of 2014, there were nine AB 109 probationers in the city. WSGVACTF conducted compliance checks to make sure that the probationers were staying within their conditions of probation. By the end of 2014, all nine AB 109 probationers had moved out of the city.

### School Resource Officer

Detective Juan Salcido is assigned as the department's School Resource Officer (SRO) and is also a team leader in the department's Special Enforcement Team.

The SRO's primary responsibility in the schools is to investigate juvenile crimes, but to also assist the other detectives on investigations. The SRO assists with school activities to help build a positive relationship with the students and also participates in the School Attendance Review Boards with the school district.



In 2014, a traffic safety presentation was conducted at the middle school by Detective Salcido to all students to help educate the students on traffic safety.

### Crime Prevention/Crime Analysis

Detective Richard Lee is the Crime Analyst and Crime Prevention Officer and in addition also handles a detective case load.

Crime Analysis involves analyzing crimes for patterns, trends, series and provides information on how to deploy resources in an effective manner. The

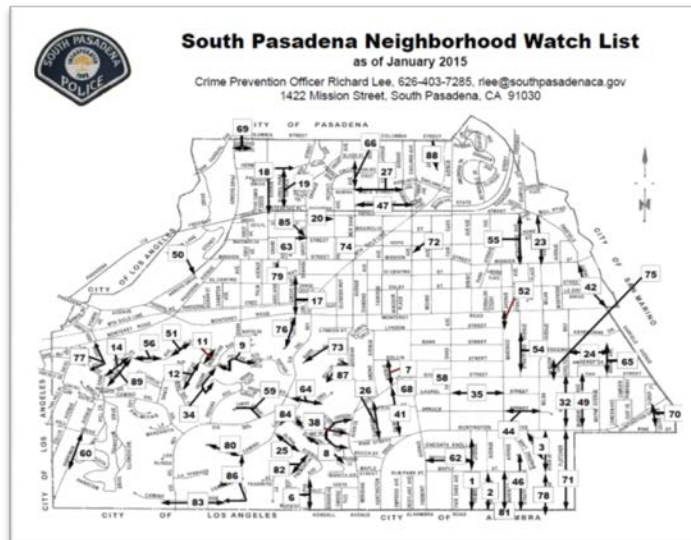
Crime Analyst maintains crime statistics for the department, intelligence gathering and sharing with neighboring agencies and registers sex, arson, narcotics and gang registrants in the city. Using a computerized composite program, the crime analyst also performs composites of suspects with victim/witnesses of crimes.



The Crime Analyst transfers videos to a digital format to be used as still photos, as well as generating and distributing crime bulletins to the community and surrounding agencies. Surveillance videos continue to be a great asset in identifying suspects. Surveillance videos are posted on the department's YouTube website as well as being sent to the media.

Updating the police department's website is also part of the Crime Analyst duties as well as preparing the department's annual report.

Crime Prevention is the community outreach program to educate in ways to prevent crime from happening through literature, public speaking and events. The Neighborhood Watch program is the core of the crime prevention program. Neighborhood Watch is the "eyes and ears" of the police department by reporting suspicious activity. The South Pasadena Public Safety Commission continues to assist in expanding the Neighborhood Watch Program. In 2014, the department added eight Neighborhood Watch Groups in the city.



Crime Prevention also performs Home Security Inspections for residents. The officer will walk through a home and recommend ways to better secure it.

The Weekly Crime Summary and monthly Neighborhood Watch Newsletters provide information on recent crime trends and crime prevention tips. This is sent to the media, Neighborhood Watch groups, schools, community and also available on the department's website.

Crime Prevention also assists in sending out Nixle alerts to the community.

The Crime Prevention Unit is also responsible for coordinating the largest community event for the department, the annual Police and Fire Open House. The event is coordinated with the South Pasadena Tournament of Roses Classic Car Show and together both events draw over 10,000 people for the day. Annually, the police and fire department opens their doors to the community. Many police and fire departments and businesses provide safety information to the community. Free giveaway items are distributed as well as child fingerprinting, child souvenir photographs, helicopter landings, police and fire demonstrations and police canines. In 2014, the theme of the Open House was on emergency preparedness where residents could obtain information from what to do before, during and after a natural disaster. Local companies, county, state and federal agencies all participated in distributing information. The police department's Honor Guard assisted with opening ceremonies for the day.

**Images from the 2014 Police and Fire Open House**



## TRAFFIC ENFORCEMENT

Traffic safety has been a major concern for South Pasadena since the early 1900s. Today, the South Pasadena Police Traffic Unit consists of one motorcycle officer, with one other motorcycle officer position vacant.

The primary job of the Traffic Unit is to reduce traffic collisions by traffic enforcement and traffic education. The Traffic Unit also investigates traffic accidents. Traffic reconstruction is created using state-of-the-art, three-dimensional and electronic surveying tools.



In 2014, the Traffic Unit participated in the national seatbelt campaign called "Click It or Ticket". This campaign emphasized seatbelt safety for all motorists.

Additionally, the Traffic Unit responds to numerous community requests for traffic concerns in their neighborhoods, often speeding motorists, or stop sign enforcement.



To help remind motorists to slow down while driving through the city, the department has two portable radar trailers that display the motorists speed as a reminder to slow down and obey the posted speed limit. These radar trailers are constantly being deployed at major streets. The radar trailer is also deployed at various streets in the city based on requests from residents.

The Traffic Unit works with neighboring motorcycle officers from Monterey Park, Alhambra, Cal State University Los Angeles, San Marino and San Gabriel Police Departments in a mutual traffic enforcement task force. Together they conduct traffic safety operations in each city.

**Pedestrian Safety Operations** – Pedestrians must take extra care crossing streets as many motorists are often distracted while driving. Pedestrian Safety Operations specifically look for motorists who do not yield to pedestrians crossing streets.

**Railroad Crossing Operations** – Motorists that run through or around railroad crossing arms poses an extreme danger to themselves, train passengers and to the community.

The Traffic Unit also works with the California Highway Patrol and the Glendale Police Department in commercial vehicle enforcement. Commercial vehicles pose a danger to the city as their weight and size can damage city streets so it is important that commercial vehicles stay on only designated truck routes in the city. Commercial checkpoints were held throughout the year to make sure that commercial vehicles are in compliance with state laws in regards to weight, size and safety equipment.



## DUI ENFORCEMENT

With more than 10,000 people killed by alcohol related traffic accidents in 2012, the South Pasadena Police Department takes a strong stance on DUIs.

Not only do officers look for signs of impaired driving, the department also participates in grant funded DUI enforcement.

In 2014, South Pasadena Police Officers participated in the “Avoid the 100” program. The “Avoid the 100” is a grant sponsored by the Office of Traffic Safety (OTS) and comprises the 100 law enforcement agencies in Los Angeles County in a countywide DUI operation.

The South Pasadena Police Department also obtained a mini-grant from the OTS to host three sobriety checkpoints in 2014. The department made 52 DUI arrests in 2014.





## CANINE

In 2014, the police department welcomed its newest canine to the department. Three year-old “Lisu” is a Dutch Malinois who came from Belgium to be part of our department.

“Lisu” is the eighth canine in the department’s history, and joins “Barry” as part of the department’s current canine team. “Lisu” is a patrol and explosives canine, which apprehends suspects and detects explosives with his keen nose. “Lisu” is partnered with Officer Fernando Sandoval, a 27 year veteran of the department. Officer Sandoval has been a canine officer for over seven years.

“Barry”, a Dutch Shepherd, specializes in drug detection and is partnered with Corporal Shannon Robledo. “Barry” and Corporal Robledo have conducted sweeps around the school campuses and at search warrants for narcotics.

Both “Lisu” and “Barry” are part of the San Gabriel Valley Canine Association, which provides mutual canine services to participating cities. Canine services include narcotic searches, explosive detection and suspect apprehension and searches. The San Gabriel Valley Canine Association comprises cities from Pasadena, South Pasadena, Alhambra, Monterey Park, Whittier and Glendora.

On September 10, 2014, both canine teams were part of a 1,000 officer strong task force that served search and arrest warrants in the fashion district of Los Angeles called, “Operation Fashion Police”. The raid yielded \$100 million dollars in cash that was being laundered from narcotics sales.

In addition to their patrol duties the canines are also popular around children and a great community relations tool.



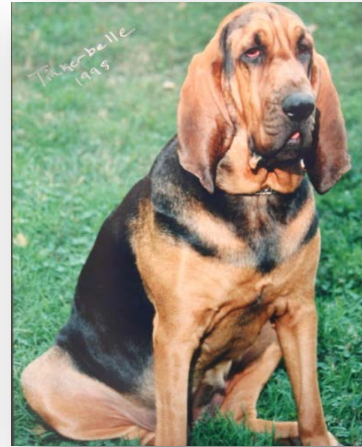
## SOUTH PASADENA POLICE CANINES



“Belker”  
1982-1985



“Tommy”  
1998-2005



“Tinkerbelle”  
1998-2008



Officer Slavin and  
“Cinderella”  
2001-2005



Officer Sandoval  
and “Rex”  
2005-2013



“AnnaBelle”  
2006-2013



Corporal Robledo and “Barry”  
2013-Current



Officer Sandoval and “Lisu”  
2014-Current

## SPECIAL ENFORCEMENT TEAM

The South Pasadena Police Department Special Enforcement Team (SET) is a cadre of SPPD officers that are trained in special weapons and tactics and are tasked with providing incident commanders with tactical solutions to critical incidents. In addition to their primary mission, SET also provides in-service training to all sworn members of the department along with outreach programs to the community. The SET team trains twice a month with one day dedicated to range training and the other day dedicated to classroom training.



Currently, SET consists of a sergeant, corporal and seven officers with Officers Ryan Bernal and Avick Manukian the latest addition to the team. Both completed the Los Angeles County Sheriff Department's Special Enforcement Bureau's SWAT school in 2014.

The SET Team also welcomed a new member to the team, Dr. Nicholas Greco who serves as the medical director and team physician. Under the guidance of Dr. Greco, the SET members were the first officers in the department to be trained in Tactical Combat Casualty Care (TCCC). TCCC will be taught to each officer in the department to help with medical support in austere environments.

SET assists detectives with high-risk search and arrest warrants and neighboring agencies with operations. In 2014, a joint task force between several agencies was made including SET and the West San Gabriel Valley Task Force in a compliance check of probationers and parolees.

In 2014, Sergeant Abdalla provided training to the South Pasadena Fire Department to work in conjunction with the police department during active shooter or other emergencies where police and fire would be needed. This training culminated with an active shooter exercise with the South Pasadena High School. It involved the school, patrol, detectives, SET team, the South Pasadena Fire Department and volunteers. The exercise was conducted on school grounds during a pupil free day and was witnessed by police and school staff, members of the community and outside agencies.

In 2014, SET conducted one search warrant in a multi-agency burglary operation and six compliance checks during an AB 109 (probation) operation.



*SET Officers training on room entry and searching*



*TCCC classroom training*



*Dr. Greco instructing Officer Manukian on the use of the nasopharyngeal*



*TCCC field training*



*Active Shooting Training at the South Pasadena High School*

## BICYCLE UNIT

The South Pasadena Police Department's Bicycle Unit is a volunteer unit that is open to both Regular and Reserve Officers. The Bicycle Unit is supervised by Sergeant Matthew Ronnie and currently comprised of three officers.



The use of bicycles on patrol allows officers to be more visible and respond more quickly in congested foot areas where a vehicle is not practical like the Farmers Market, business district and community events. The Bicycle Unit is used extensively during the holidays to provide high visibility for the businesses of the city.

While officers still conduct foot patrols around the business district, bicycles allow officers to cover a much larger area. The biggest asset of using bicycles is its stealth. Bicycles are very quiet and can quickly catch a thief by surprise.

Bicycles have also been a great community relations tool. Officers on bicycles can still patrol a large area and at the same time contact residents and business owners on a friendly basis. This has helped foster a positive relationship between the police department and the community.



## FOOTHILL AIR SUPPORT TEAM

The South Pasadena Police Department continued their involvement with the Foothill Air Support Program (FAST).

FAST is a regional Air Support partnership founded in 1999 by the Pasadena Chief of Police Bernard Melekian. FAST provides a regional law enforcement helicopter air support program to enhance public safety service in the San Gabriel Valley. FAST also assists with Homeland Security checks at major sporting events in the San Gabriel Valley.



Currently, FAST is a partnership between the cities of Alhambra, Arcadia, Covina, Glendora, Monrovia, Pasadena, Pomona, San Marino, Sierra Madre and South Pasadena.

Each participating agency in FAST must provide a “Tactical Flight Officer” (TFO). A TFOs is not a pilot, they are the second person that sits alongside the pilot and monitors radio transmissions from the partnering cities and prioritize which calls to respond to. The TFO is also responsible for coordinating officers on the ground during a search of a suspect.

FAST flies both the Hughes 500D and the Bell Helicopters. Both are equipped with Night Vision Goggles and Forward Looking Infrared (FLIR) systems which allow thermal imaging and can detect body heat of suspects at night. The Hughes helicopter is equipped with a Video Downlink System, which provides ground units live feed of an aerial view.

Corporal Shannon Robledo is the department’s Tactical Flight Officer and balances his duties as one of the department’s K9 officer. Corporal Robledo has more than 2,000 flight hours.



## HONOR GUARD

The South Pasadena Police Department's Honor Guard serves to escort the US and State flag in local ceremonial events. Sergeant Michael Neff supervises the Honor Guard which is comprised of volunteers.

Officers of the Honor Guard are ambassadors of the department as they represent the professionalism and positive image of the police department to the public.

The Honor Guard performed at several events in 2014. They participated in the 911 Memorial Service, 4<sup>th</sup> of July parade, the South Pasadena Tournament of Roses Classic Car Show, Police Recognition Luncheon and the Annual Police Inspection.



## ADMINISTRATIVE SERGEANT

Acting Captain Mike Neff oversees administrative, technical and supervisory tasks related to staff support for the department. He supervises the Dispatch E-911 Center and the Records Division. He works closely with staff with parking permit policies, procedures, and enforcement. In addition he works with outside vendors to maintain and upgrade the department's technical and tactical equipment through budget funding, securing State and Federal Grants. As with most agencies, budgets restraints continue to be a challenge for police agencies across the nation and South Pasadena is no exception. As we work with Law Enforcement vendors we are routinely requested to beta test products. During 2014, we have been very successful obtaining several hundred thousand dollars in funding for "First Responders". Without these funding sources our agencies wouldn't have the opportunity to purchase the needed safety equipment for our officers such as items pictured below.

- Tahoe (outfitted to operate tactical operations and natural disasters)
- Additional ALPR (automated license plate reader systems)
- Radios (capable of communicating with surrounding agencies)
- Tactical Equipment (rifles, helmets, and shields)
- 9-1-1 Communications (upgrades for computer, radios, headsets)
- "Predictive Policing" software to assist patrol
- "Tactical Medical" kits for all police officers
- "AED" Automatic Emergency Defibrillator for the station and patrol.





## OFFICE OF PROFESSIONAL STANDARDS

Sergeant Brian Solinsky supervises the Office of Professional Standards, the Emergency Management Operations and is also the liaison of the “Area C” Mutual Aid program.

The Office of Professional Standards is responsible for the department’s internal affairs investigations, oversees training for all officers, the hiring and processing of new employees, and also promotional testing. Sergeant Solinsky also oversees the Reserve Officers.

The Emergency Management Operations (EOC) oversees and coordinates the city’s emergency plan. The EOC is the command center for the city in case of emergencies or natural disasters. The Emergency Management staff provides training to all city department heads, staffs and various community groups to prepare for large scale disasters.

Los Angeles County is divided into eight areas that are designated with letters A-H. This pre-planned mutual assistance allows each agency to mobilize for assistance within each group. The city of South Pasadena is in “Area C” along with Pasadena, Burbank, Glendale, San Marino, San Gabriel, Monterey Park, San Fernando, Alhambra and La Canada/Flintridge.



Training is often conducted with the other departments of Area C so that in a mutual call for service all officers could interact cohesively and support one another. In 2014, the Alhambra Police Department organized active shooter training at the Glendale Galleria. Participating officers went through a scenario trying to stop the assailant while also caring for victims.

### **DEPARTMENT TRAINING**

The police department constantly trains to maintain a high level of standard over what the state requires. Training can be conducted either in-house or at outside locations. Each officer is encouraged to attend training year around. Some of the training that took place in 2014 includes Legal Update, Arrest and Control, Firearms, Autism awareness and how to deal with people with special needs.

The department’s Weaponless Self-Defensive Tactics Team also taught self-defense instruction to the police department non-sworn employees and other city employees.



**Area "C" Mutual Aid Training**



*Officer down rescue training*



*Training in high-risk stops*



*Patrol rifle training*



*Pistol training*

## SUPPORT SERVICES ASSISTANT

Peggy Grangetto is the Support Services Assistant (SSA), which is a non-sworn position that provides valuable support to the police department. These responsibilities include:

**Recruitment** – The SSA recruits new police employees, develops and distributes job announcements, administers written, physical fitness, oral interviews, background investigations, psychological, medical testing, and distributing of required equipment.

**Property/Evidence Management** – Manages the department's property/evidence room including the receiving, processing, storing, maintaining and releasing of property/evidence. The SSA also arranges the auction of unclaimed property and weapons, ammunition and narcotic disposal.

**Department Training** – Arranges required annual training per the California Peace Officers Standard and Training for department personnel. Officers are required to continue their training throughout their career on topics related to their position: shooting, vehicle pursuits, legal updates, crowd control, arrest and control, traffic enforcement, communications and tactical exercises.



## POLICE ASSISTANTS

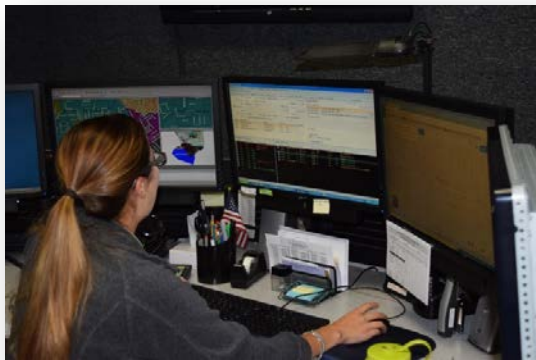
Police Assistants (also called “Dispatchers”) are full-time, non-sworn employees who handle communication between officers in the field, incoming telephone calls for service and 911 emergency calls. They also monitor station security through surveillance cameras throughout the station.

Police Assistants provide a critical service for the department. They are the communication link between officers in the field and residents calls for service. They must also quickly prioritize calls for service between emergency and non-emergency calls.

Police Assistants must also enter all calls for service into the Computer Aided Dispatch and enter suspect, victim and various crime information into the Records Management System.

All Police Assistants are trained in first-aid and CPR. They must be able to provide medical assistance to a resident by telephone while an ambulance is enroute.

Police Assistants are a valuable part of the South Pasadena Police Department insuring community and officer safety.



## RECORD CLERKS

The Records Section is part of the Support Division and is supervised by the Administrative Sergeant, Michael Neff. The primary responsibility of the Records Section is maintaining all police reports and processing of court subpoenas. Police reports are maintained digitally and securely stored on a police server.

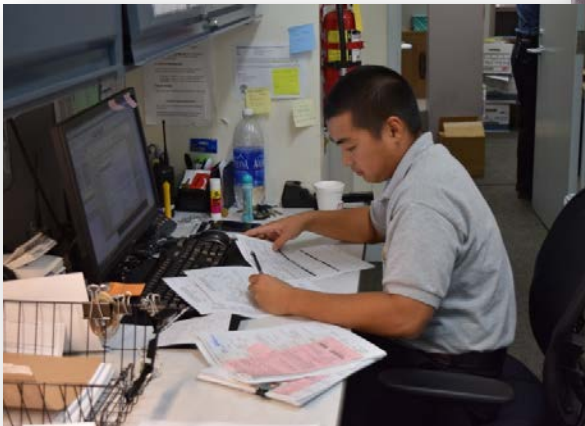


The Records Section is staffed by four Records Clerks who perform a variety of duties and assisted by Police Cadets. The Record Clerks must process and archive all police reports, subpoenas and citations. They also process the necessary paperwork for submission to the District Attorney's Office for filing and issue all vehicle parking permits.

All public requests for police reports are also handled by the Records Clerk as well as many e-policing services offered by the police department.

The Records Clerks also assist requests at the front counter to fulfill ink fingerprinting requests for citizens.

In 2014, Ryan Hang was hired as a Records Clerk. Prior to his promotion he was a cadet for one year with the department.



## CADETS

Police Cadets are part-time employees who perform support duties to the police department. Ideally the cadet program is focused on teen-agers and introduces them for a career in law enforcement. The minimum age of a cadet is 16 years with no maximum age.

The variety of duties that cadets perform include traffic control, assisting the public at the front counter, administrative duties, taking reports, parking control enforcement, serving court ordered subpoenas, station tours and assisting in dispatch.

Cadets are non-sworn law enforcement officers and do not attend a police academy or carry firearms.

The department utilizes the Cadet program as a resource from which Reserve or full-time Officers may be filled.

Issac Gutierrez, Ricky and his brother Gary Sze were hired as cadets in 2014.



## POLICE CHAPLAIN

Dan Bricker is the department's chaplain and is a non-sworn volunteer. As the department's chaplain, Dan Bricker provides support and encouragement for all employees of the department. This includes counseling as well as any religious functions that might be deemed necessary.

Chaplain Bricker routinely rides with officers offering his assistance when needed. Chaplain Bricker assists with death notifications, provides counseling to residents, sobriety checkpoints and presenting invocations at special events.

Chaplain Bricker participated in "Pizza with a Purpose", a fundraising event at California Pizza Kitchen for fallen Pomona Police Officer Shaun Diamond.

Chaplain Bricker is also a member of the Los Angeles Area C Chaplains Association.



*Los Angeles "Area C" Chaplains*

## ADMINISTRATION SECRETARY

Esther Delinko is the Administrative Secretary who provides support services to the Chief of Police. Her duties include: preparing agendas and minutes for the monthly staff meetings; processing accounts payable, maintaining personnel files, scheduling appointments and meetings for the Chief; ordering Department supplies; maintaining petty cash; preparing the Chiefs payroll; assisting with the processing of new employees and completes other projects as assigned.

She is also responsible for supervising the School Crossing Guard Program which includes recruitment; training and completing their payroll.





## CROSSING GUARDS

In 2014, the city employed 10 Crossing Guards, each responsible for a specific intersection near the middle and elementary schools.

Crossing Guards are an important role in traffic safety for children. They are part-time employees who assist children crossing streets during morning and afternoon school hours.

The mere presence of Crossing Guards at intersections helps ease the concerns of parents, children and motorists regarding pedestrian safety. Children depend on Crossing Guards to help guide them across busy intersections safely.

Each Crossing Guard is provided training at the beginning of each school year and is issued their own stop sign, whistle, safety vest, cap and raincoat.



## RESERVE OFFICERS

The South Pasadena Reserves is a volunteer program that augments the full-time officers and is led by Reserve Commander Joe Lunnon. Reserve Officers are dedicated volunteers in that they must meet the same rigorous requirements and continuous training as Regular Officers while balancing their career as well.



Created in 1942, they were originally called the “South Pasadena Auxiliary Police”. Auxiliary Officers were the third officer in a police car carrying only a flashlight and a baton. In 1945, Auxiliary Officers were changed to “Reserve Officers” with authority to carry firearms. In 1962, the City of South Pasadena officially established a Police Reserve organization.

Currently, the South Pasadena Reserves consists of ten officers and continues an active recruitment. The Reserves are authorized 50 officers. In 2014, the Reserve Organization reached a milestone with 500,000 hours of volunteer service to the city.

Reserve Officers perform the same duties as regular full-time officers and must volunteer a minimum of 16 hours per month. Reserve Officers must undergo the same hiring requirement as regular full-time officers, complete a background check, police academy, and an in-field training with an assigned Field Training Officer. Reserve Officers must also complete monthly and annual department training including range qualification.

Reserve Officers assist with patrol, DUI checkpoints, bicycle patrol, and also work specialized events, which include the Fourth of July Parade and Firework show, Tiger Run, high school sporting events, and other special city events throughout the year.

Today about 50% of the department’s full-time officers were former Reserve Officers with the department.

In 2014, the South Pasadena Police Department welcomed Mike Mejia as a new Reserve Officer. Officer Mejia was formally a police cadet with the department before becoming a Reserve Officer.


# PREDICTIVE POLICING

Since 2013, the South Pasadena Police Department has been using a new tool to help fight and predict crime. The police department has contracted with Crime Reduction & Information Management Experts (CRIME) to help direct patrol officers to drive a pre-designated route to where predicted crimes may occur.

CRIME uses proprietary algorithms to forecast where crimes may occur. A map of the city with highlighted routes is supplied to officers to help deter the predicted crime.


The police department contracted with CRIME to help forecast and reduce the high number of residential burglaries and thefts that occurred in 2013. In its first full year of using Predictive Policing there was a 28% reduction in residential burglaries.

CRIME will continue to be used as a cost effective tool in reducing crime.



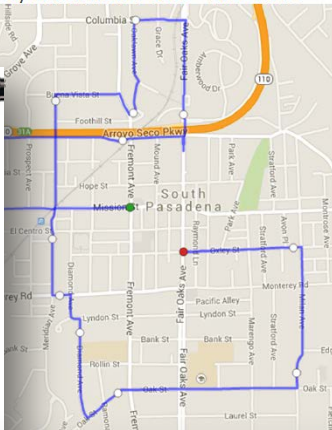
**SOUTH PASADENA POLICE DEPARTMENT  
ROUTE ENDING DECEMBER 31, 2014**


Day Watch Route: 0900 - 1500 Hours



**SOUTH PASADENA CRIME FORECAST:  
ENDING DECEMBER 31, 2014**


<b>BFMV</b> 12/22/2014 0800-1100 Fremont Ave & Hope St	<b>GTA</b> 12/22/2014 1000-1300 Ramona Ave & Spruce St	<b>Burglary</b> 12/22/2014 1100-1400 Oaklawn Ave & Fremont Ln	<b>BFMV</b> 12/22/2014 1600-2100 Orange Grove Ave & Orange Grove Terr	<b>GTA</b> 12/22/2014 2100-2400 Milan Ave & Alhambra Rd
<b>BFMV</b> 12/23/2014 0700-1000 Fair Oaks Ave & El Centro St	<b>GTA</b> 12/23/2014 1200-1500 Meridian Ave & Braewood Ct	<b>BFMV</b> 12/24/2014 0800-1100 Milan Ave & Edgewood Dr	<b>Shoplift-Theft</b> 12/24/2014 1200-1500 Fair Oaks Ave & El Centro St	<b>Assault</b> 12/24/2014 1800-2100 Hope St & Stratford Ln
<b>BFMV</b> 12/24/2014 2000-2300 Diamond Ave & Pine St	<b>BFMV</b> 12/24/2014 2000-2400 Garfield Ave & Mission St	<b>BFMV</b> 12/25/2014 1800-2100 Stoney Dr & Mission St	<b>Burglary</b> 12/25/2014 1900-2200 State St & Raymondale Dr	<b>BFMV</b> 12/27/2014 1600-1900 Fair Oaks Ave & Mound Ave
<b>BFMV</b> 12/28/2014 1000-1300 Orange Grove Ave & Magnolia St	<b>BFMV</b> 12/29/2014 1700-2000 Hermosa St & Grand Ave	<b>GTA</b> 12/30/2014 1900-2200 Prospect Ave & Mission St	<b>GTA</b> 12/31/2014	

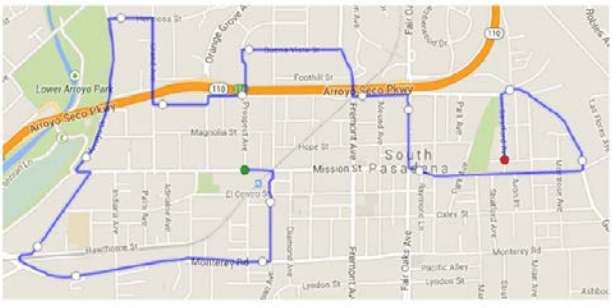




**SOUTH PASADENA POLICE DEPARTMENT  
ROUTE ENDING DECEMBER 31, 2014**

Night Watch Route: 1900 - 2400 Hours





# ON-LINE POLICE REPORTING

Since 2013, the police department has implemented an online reporting system that allows residents to make certain police reports on the internet.

Online police reporting allows residents to make crime reports anytime during the day at their convenience from their home. Online reporting helps reduce calls for service for officers in crimes where there are no suspect leads to investigate. This allows officers more time to respond to higher priority calls for service and more time for officers to patrol the city.

While all reports filed online will still be investigated, residents can also print a copy of their report for insurance purposes. Crimes that can be filed online are graffiti, identity theft, lost property, theft, vandalism, vehicle tampering, hit and run traffic accidents, child custody violation and harassing phone calls.

In its first year of operation in 2013, there were 152 online reports made. In 2014, there were 263 online reports made. This 42% increase shows the importance of web based policing to the community.

The screenshot shows the 'File a Police Report Online' page on the City of South Pasadena website. The page title is 'File a Police Report Online'. Below the title, there is a section titled 'File A Police Reports Online' with a welcome message and instructions. A list of incident types is provided, including Child Custody Violation, Extra Patrol Request, Graffiti, Harassing Phone Call, Hit and Run, Identity Theft, Lost Property, Police Records Request, Theft, and Theft From Vehicle. Each incident type has a definition and examples.

Select	Incident Type	Definition	Examples
<input type="radio"/>	Child Custody Violation	Incidents involving the custody/care/control of children.	One parent fails to drop off a child at a predetermined place or time.
<input type="radio"/>	Extra Patrol Request	Request for the South Pasadena Police Department to make extra patrols of my residence/business due to extenuating circumstances.	Request for the South Pasadena Police Department to make extra patrols of my residence/business due to extenuating circumstances.
<input type="radio"/>	Graffiti	Spray painting, tagging, etc.	spray paint on buildings, bridges etc.
<input type="radio"/>	Harassing Phone Call	Unwanted phone calls of an annoying, harassing or threatening nature.	Immediate hang-ups, obscene language, etc. with no known suspects.
<input type="radio"/>	Hit and Run	Leaving the scene of an accident without providing required license, insurance or vehicle information.	Damage caused by another vehicle in which the driver should have left information or fled the scene without stopping to exchange information.
<input type="radio"/>	Identity Theft	Obtaining someone else's personal identifying information and using it to obtain credit, goods or services.	Someone obtains a credit card using your S.S.N. or obtains phone service using your personal information.
<input type="radio"/>	Lost Property	When property is missing or lost.	Property that is missing, leaving items in restaurant, or missing from home.
<input type="radio"/>	Police Records Request	Application for release of information.	Request for police report.
<input type="radio"/>	Theft	Your property is taken without your permission.	Property known to be stolen and missing may be reported. Lost property is not a theft.
<input type="radio"/>	Theft From Vehicle	Property is stolen from an unlocked motor vehicle.	Stolen equipment or belongings from a vehicle.

## COMMUNITY INVOLVEMENT

Because of the small town atmosphere, the South Pasadena Police Department works closely with the community and businesses to develop a strong three-way partnership to fight crime. While the department has many successful community outreach programs, the department consistently looks for new programs to help interact with the community.

- **Neighborhood Watch** – The Neighborhood Watch Program continues to be the most successful crime prevention program. The police department continues to work closely with the South Pasadena Public Safety Commission to explore new ways to expand the program.



- **Waste Watch** – The Waste Watch program continues our relationship with Athens Disposal. This program involves the disposal company to be involved with the community by helping to report suspicious activity as they go to each household to pick-up trash on a daily basis.

- **Farmers Market** – The South Pasadena Police Department continues to participate in the South Pasadena Chamber of Commerce’s Farmers Market to interact with the community in a positive way. Residents are able to stop by the police department booth and ask questions, or share their concerns with officers. The department participates the second Thursday of each month.



- **Bicycle Detail** – The South Pasadena Police Bicycle Unit continues to help officers interact with the community while patrolling at the same time. The Bicycle Unit is comprised of both Regular and Reserve Officers and is used to patrol special events and the businesses of the city.

- **Torch Run for Special Olympics** – The annual Law Enforcement Torch Run for Special Olympics helps bring awareness and raise funds for the Special Olympics. The “Flame of Hope” is carried by various law enforcement agencies across the United States. The South Pasadena Police Department proudly participates in

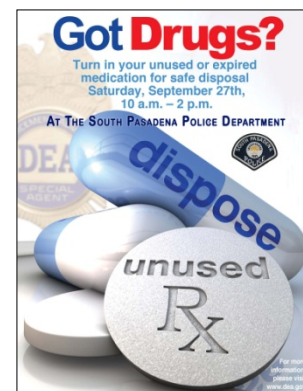


this worthy cause bringing awareness to the city. In 2014, Chief Miller, Councilmember Michael Cacciotti participated with officers of the police and fire department in a six mile run through South Pasadena and Highland Park area of Los Angeles, where the torch was passed on to the Los Angeles Police Department's Northeast Division.

- **Baker to Vegas Relay Race** – This annual event is the largest law enforcement foot race of its kind. The 120 mile, 20 leg relay race starts from Baker, California and ends at Las Vegas, Nevada. The event draws law enforcement agencies from all over the nation and world for a friendly competition. Law enforcement agencies from Germany, Australia, and Canada regularly compete in the race and 2014 marked its 30<sup>th</sup> Anniversary. In 2014, the South Pasadena Police Department teamed with officers from San Marino, San Fernando, Monterey Park and Pasadena City College Police Departments in the grueling race. The multi-agency team help builds camaraderie between the neighboring agencies. The team completed the grueling race in 18 hours and 22 minutes, placing 16<sup>th</sup> in its division category.



- **Prescription Drug Take Back** – The South Pasadena Police Department continues to partner with the Drug Enforcement Agency (DEA) and participates in the DEA's Prescription Take Back Program. This DEA sponsored event allows residents to turn in expired, unused or unwanted prescription drugs. The drugs are then disposed of properly, rather than throwing them in the trash or flushing them down the toilet. In 2014, the South Pasadena Police Department held two collection events at the police department.



- **Operation Chill** – In partnership with 7-Eleven stores, the South Pasadena Police Department continues to participate in "Operation Chill". This program that was developed by 7-Eleven stores help rewards children for doing good deeds with a free child size Slurpee coupon. Each year, officers of the South Pasadena Police Department distribute over 200 coupons to children performing good deeds. It also allows a positive interaction between officers and children of the community.



- **Secure the Call** – To help victims of domestic violence and other crimes, the South Pasadena Police Department participated in the “Secure the Call” program. This nationwide program help collects unused/old cell phones that are recycled and provided to victims of crimes.



Some of the new programs that were introduced in 2014 to help further bond with the community were:

- **Serving of Thanksgiving and Christmas Lunch to Seniors** – Employees of the South Pasadena Police Department and family members of officers volunteered to helped serve lunch to the seniors on Thanksgiving and Christmas. The South Pasadena Police Officers’ Association donated the Thanksgiving lunch and the lunch for Christmas was also donated by the association as well as Chief Miller.



- **Coffee with a Cop** – Residents came out to Heirloom Bakery and Café and met with officers to chat and discuss their concerns in a relax atmosphere, while also grabbing a nice cup of coffee. The first ever “Coffee with a Cop” event was very successful with plans to continue it in 2015.



- **Community Events** – The Crime Prevention Unit participated in the Holy Family Fall Festival and Orchard Supply Hardware store Child Safety Day to help reach out to the community and provide various crime prevention tips.



- **Woman's Self-Defense Training** – The South Pasadena Police Department's Weaponless Defensive Tactics Instructors held four classes to women on rape defense. Local resident Dawn Muench approached Chief Miller to discuss training to help women learn to protect themselves. The four-hour training was a huge success and additional classes will be offered in 2015 as well as the possibility of expanding the training to include men. Over 80 women attended the four classes. The Weaponless Self-Defensive Tactics Instructors for the department are Corporal Tom Jacobs, Detectives Michael Palmieri, Juan Salcido and Officer Ryan Bernal.





## DEPARTMENT INSPECTION

On October 20, 2014, the police department held its annual inspection of all employees. Chief Miller and the command staff inspected both sworn (regular and reserves) and non-sworn officers in front of city officials, invited guests and residents.



*Mayor Dr. Marina Khubesrian speaks with Chief Miller*



*Chief Miller inspecting South Pasadena Police Officers*



South Pasadena Police Department - 2014

## AWARDS LUNCHEON

On May 7, 2014, the police department held an awards luncheon at the Pasadena Hilton Hotel, Pasadena, CA. The purpose of the luncheon was to recognize selected officers for their exceptional service. The event was sponsored by the South Pasadena Police Officers' Association.

More than 300 people came to support the event, which was emceed by retired FBI Special Agent Jack Trimarco. The event also featured a guest speaker, US Navy Rear Admiral Raymond Smith, who was a Navy SEAL for 31 years and commanded a 2,300 SEAL force.



The event honored employees for their exceptional service to the department and two citizens that helped save a three year-old girls life.

**Part-Time Employee of the Year**

Cadet Chris Browne

**Civilian Employee of the Year**

Support Services Assistant Peggy Grangetto

**Reserve Officer of the Year**

Officer Joseph Johnson

**Officer of the Year**

Officer Jeff Holland

**Sergeant of the Year/Chief's Award**

Sergeant Michael Neff

**Distinguished Service**

Sergeant Brian Solinsky

Sergeant Tony Abdalla

**Life Saving Award**

Officer Ryan Bernal

Officer Cesar Escobedo

**Citizen Award**

Jaequon Santos

Max Storer

**Unit Citation Award**

Captain DeAnn Wheelless  
Detective Sergeant Robert Bartl  
Corporal Bill Earley  
Detective Frank Litterini  
Detective Michael Palmieri  
Detective Richard Lee  
Detective Ed Acosta  
Arson Investigator Robert Jones (South Pasadena Fire Dept.)  
Captain Wendell Eaton (Pasadena Fire Dept.)  
Detective Tony Juarez (Arcadia Police Dept.)  
Detective Bill Burkhalter (Monrovia Police Dept.)  
Detective Steve Giovanazzi (Monterey Park Police Dept.)  
Sergeant Christopher Kirby (Pasadena Police Dept.)  
Detective Ken Florendo (Pasadena Police Dept.)  
Detective Joaquin Gurrola (Pasadena Police Dept.)  
Deputy District Attorney Francis Young  
Deputy District Attorney Sean Carney



*Emcee Jack Trimarco, FBI (retired)*



*Jeff Holland  
Officer of the Year*



*Lifesaving Award recipients  
Officers Bernal and Escobedo*



*Guest Speaker Rear Admiral  
Raymond Smith*

## PUBLIC SAFETY COMMISSION

The South Pasadena Public Safety Commission is a volunteer group of residents whose function is to recommend suggestions on issues involving public safety.

The commission also coordinates the city's Community Emergency Response Team program, Community Safety Patrol, school safety outreach and works closely with the police department in the expansion of the Neighborhood Watch Program. The commission assists by helping to recruit Neighborhood Watch Block Captains and provides material and handouts on the program at public functions.

The commission is comprised of seven members who serve a two-year term and each member must be a resident of the city. They meet once a month on the third Mondays of the month.

The number of hours donated by the commission in researching and recommending public safety concerns, and their assistance in Neighborhood Watch makes them a valuable tool for the police department.



*Public Safety Commissioners during a monthly Public Safety Meeting*

## IN MEMORY

Since the South Pasadena Police Department was established in 1888, there have been two officers that gave their lives in the line of duty.

Officer Ray Rogers died on April 15, 1944 in a traffic collision during a pursuit on the 110 freeway.

Officer Kevin Sandoval died on June 14, 2011 during a joint tactical training exercise with Pasadena Police Department.



To honor Officers Ray Rogers and Kevin Sandoval plaques are displayed in front of the police station as a symbol that they will never be forgotten. Chief Miller also authorized officers to wear a special memorial band with the initials of both officers on their badge. The band was worn during National Police Week in May 2014.

*Officer Ray Rogers  
End of Watch  
April 15, 1944*



*Officer Kevin Sandoval  
End of Watch  
June 14, 2011*

## WE ARE ON THE WEB



[www.southpasadenaca.gov](http://www.southpasadenaca.gov)

The South Pasadena Police Department website allows residents to access many police services online, 24 hours a day. Some of the resources available include:

### **On-line Police Reports**

Residents can file certain crime reports on-line at their convenience. A temporary copy of the report can also be printed at home.

### **Pay/Contest a Parking Citation**

Resident can pay or contest a parking citation.

### **Purchase Parking Permits**

Overnight parking permits can be purchased and printed in the convenience of residents home.

### **Purchase Reports On-Line.**

Crime and traffic accident reports can be purchased and downloaded on residents computer.

### **Weekly Crime Summary**

View the crime activity for the current week, uploaded on Wednesdays.

**Neighborhood Watch Newsletter**

Whether you are a member of a Neighborhood Watch Group or just a concerned resident, the newsletter provides information on current crime trends and prevention tips.

Other on-line resources are available through the police website, or directly from the web are:

**Crime Reports ([www.crimereports.com](http://www.crimereports.com))**

To know what crime occurred within the past 24 hours, or longer, visit crimereports and enter the city's zip code to see up to date crime in the city.

**Nixle ([www.nixle.com](http://www.nixle.com))**

Get important crime information and bulletins sent to your cell phone or email. Register for free with Nixle.

**Twitter (<https://twitter.com/SoPasPD>)**

Follow our "tweets" on Twitter.

**Facebook ([www.facebook.com/pages/South-Pasadena-Police-Department/100828809983718](http://www.facebook.com/pages/South-Pasadena-Police-Department/100828809983718))**

Become our friends and join us on Facebook

**YouTube ([www.youtube.com/user/SoPasadenaPoliceDept](http://www.youtube.com/user/SoPasadenaPoliceDept))**

Visit our YouTube channel to help identify suspects in surveillance videos and other public relations videos.

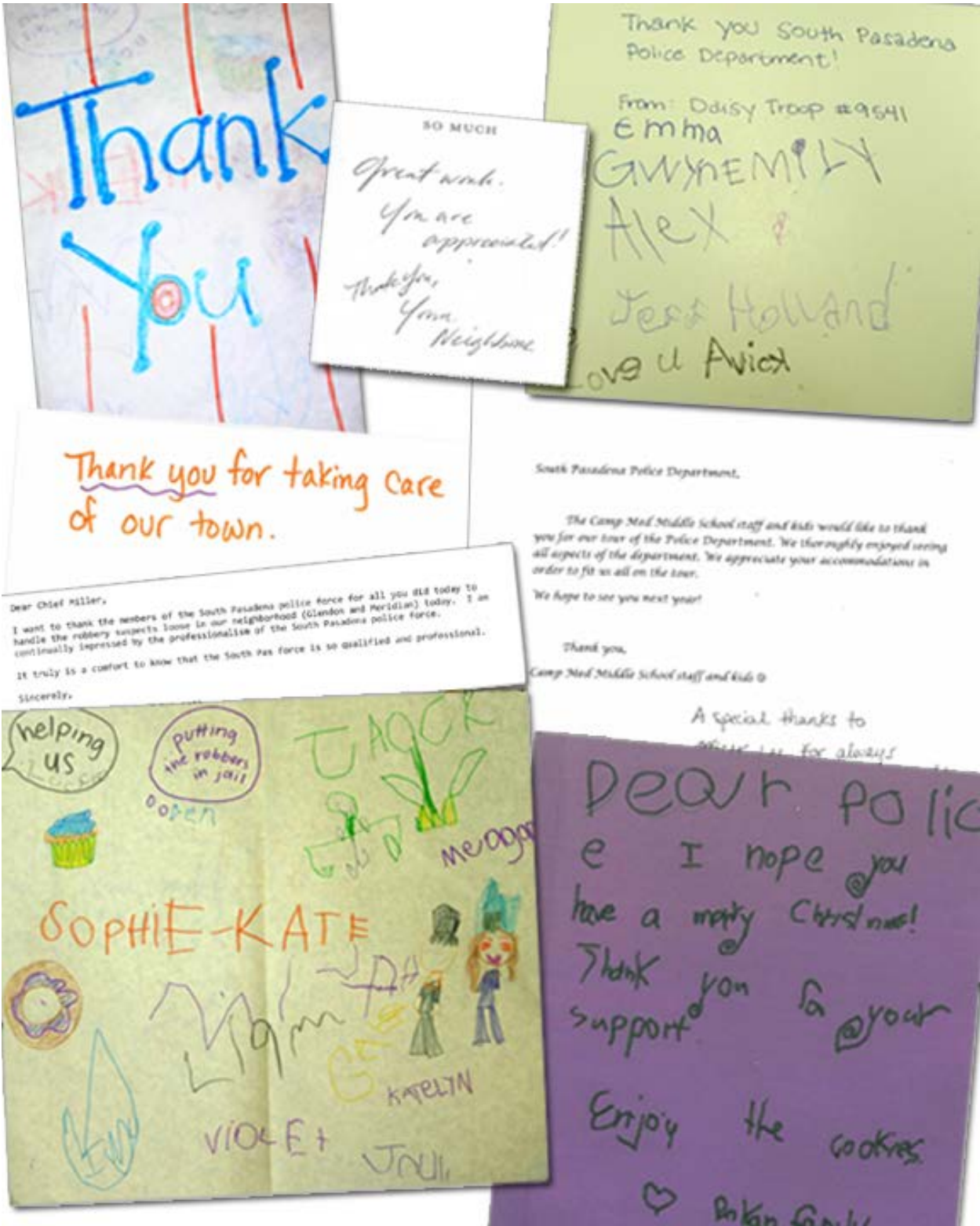
**Connect South Pasadena**

Register to receive emergency notifications from the city.

**Pinterest ([www.pinterest.com/sopaspd](http://www.pinterest.com/sopaspd))**

View historical photos of the police department.

# COMMUNITY APPRECIATION





## ACKNOWLEDGEMENTS

We would like to thank the following employees that help produce the annual report.

### **Graphic Design, Photography and Layout**

Detective Richard Lee

### **Contributing Writers**

Acting Captain Michael Neff

Detective Richard Lee

Detective Juan Salcido

Administrative Secretary Esther Delinko

### **Editorial Staff**

Acting Captain Michael Neff

Records Clerk Idessa Gonzales

### **Photos Courtesy of**

Sgt. Bill Courtice (retired)

South Pasadena Review

Jack Pettee Photographers

2014 Annual Report  
Designed and Published by the  
South Pasadena Police Department



↑ CITY HALL  
↑ COUNCIL CHAMBERS  
↑ POLICE  
FIRE DEPARTMENT →  
PUBLIC PARKING →

**South Pasadena Police Department**

1422 Mission Street  
South Pasadena, CA 91030  
(626) 403-7270

[www.southpasadenaca.gov](http://www.southpasadenaca.gov)