

## **Additional Documents**

August 27, 2024 NREC Meeting



**NATURAL RESOURCES AND ENVIRONMENTAL COMMISSION**

CITY OF SOUTH PASADENA  
1414 MISSION STREET, SOUTH PASADENA, CA 91030  
TEL: (626) 403-7240 ▪ FAX: (626) 403-7241  
WWW.SOUTHPASADENACA.GOV

REGULAR NREC MEETING  
AUGUST 27, 2024 7:00PM  
WRITTEN PUBLIC COMMENTS

FROM: ANGELO GLADDING  
AGENDA ITEM: #2 – TREE HEARING: 1040 ORANGE GROVE AVE.  
COMMENT INCLUDED AS ATTACHMENT, SEE NEXT PAGE

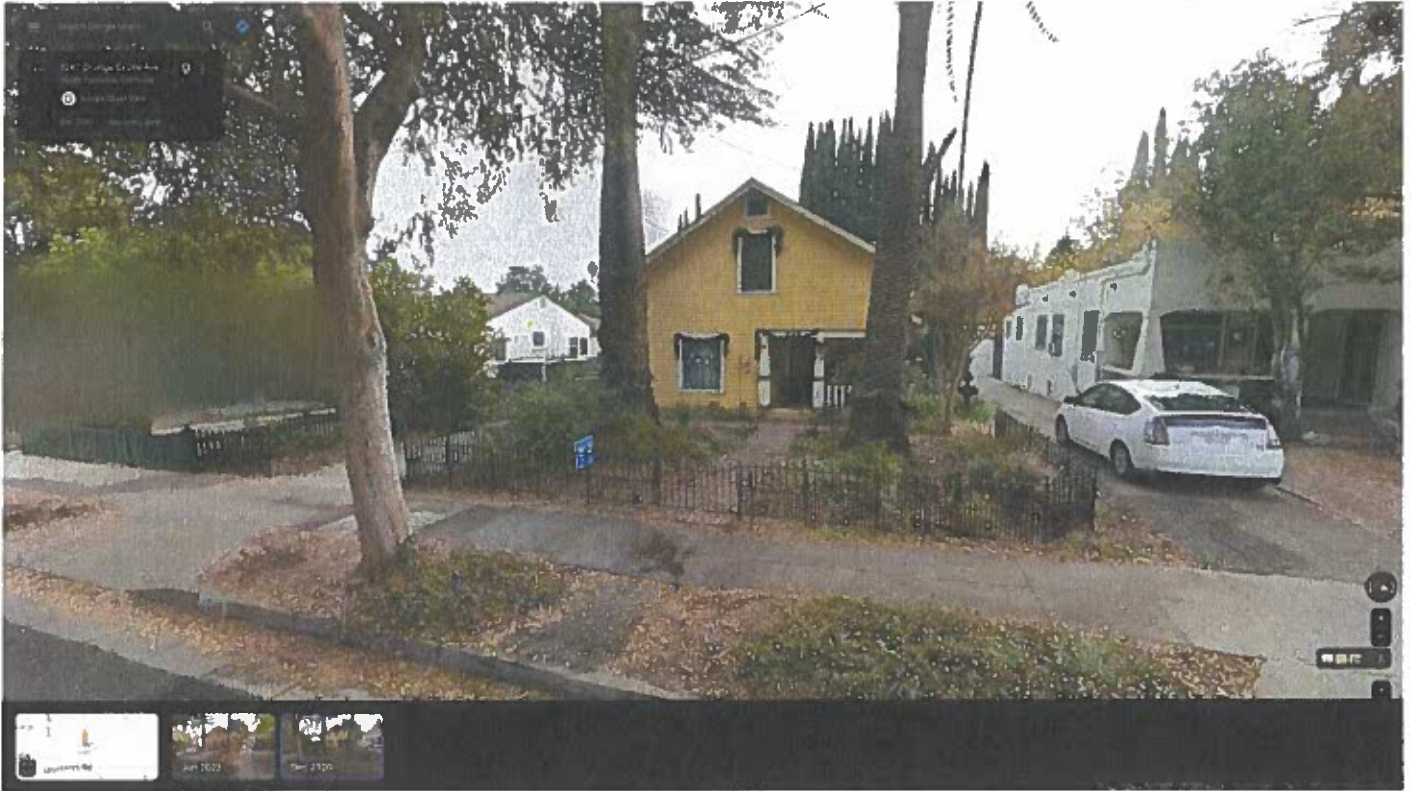


Commissioners,

Please consider the following photos and facts.

**Dec 2020**

Trees are healthy and pruned. The root initiation zones are at grade as they have most likely been for the entirety of their 50+ years of life.



CITY CLERK'S DESKTOP

AUG 27 2024 10:11:45

CITY OF SOUTH PASADENA



## June 2022

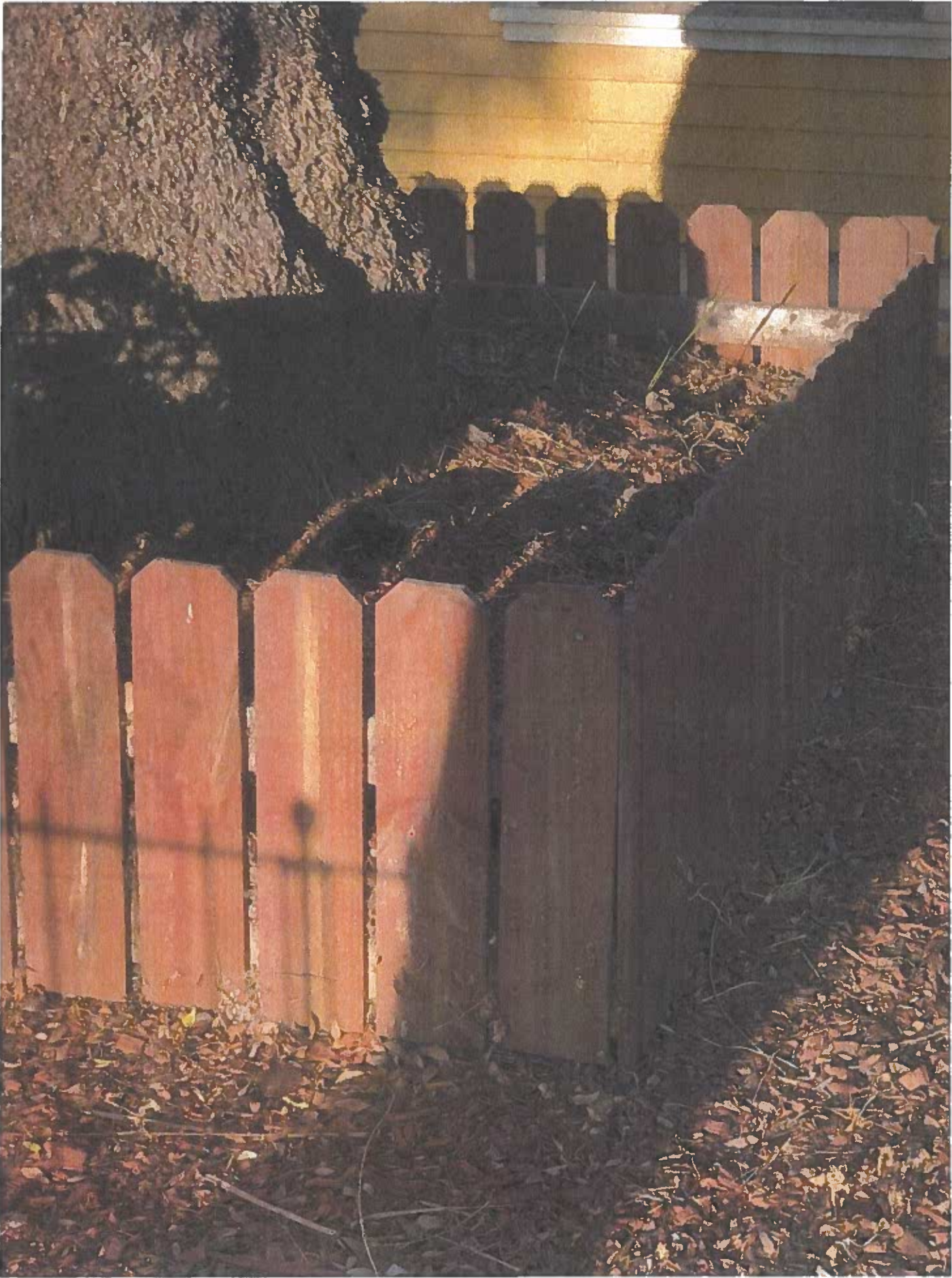
Planter boxes have been erected and 1/3 filled around the root initiation zone. The installation most likely disturbed the existing in-ground roots. This new soil grade disturbs the amount of water and oxygen that the tree receives. The old roots beneath the planter no longer receive what they've received their entire life. Same with oxygen levels. Furthermore, the adventitious roots that form at the base are most likely being oversaturated by what appears to be a rich soil fill. Typically these trees are in a sandy environment where small amounts of well-drained fill accumulate slowly around these adventitious roots. Several years of dead fronds have accumulated (this is the only Google street view photo available), most likely exacerbated by a health decline due to complications introduced by the filled planter box.





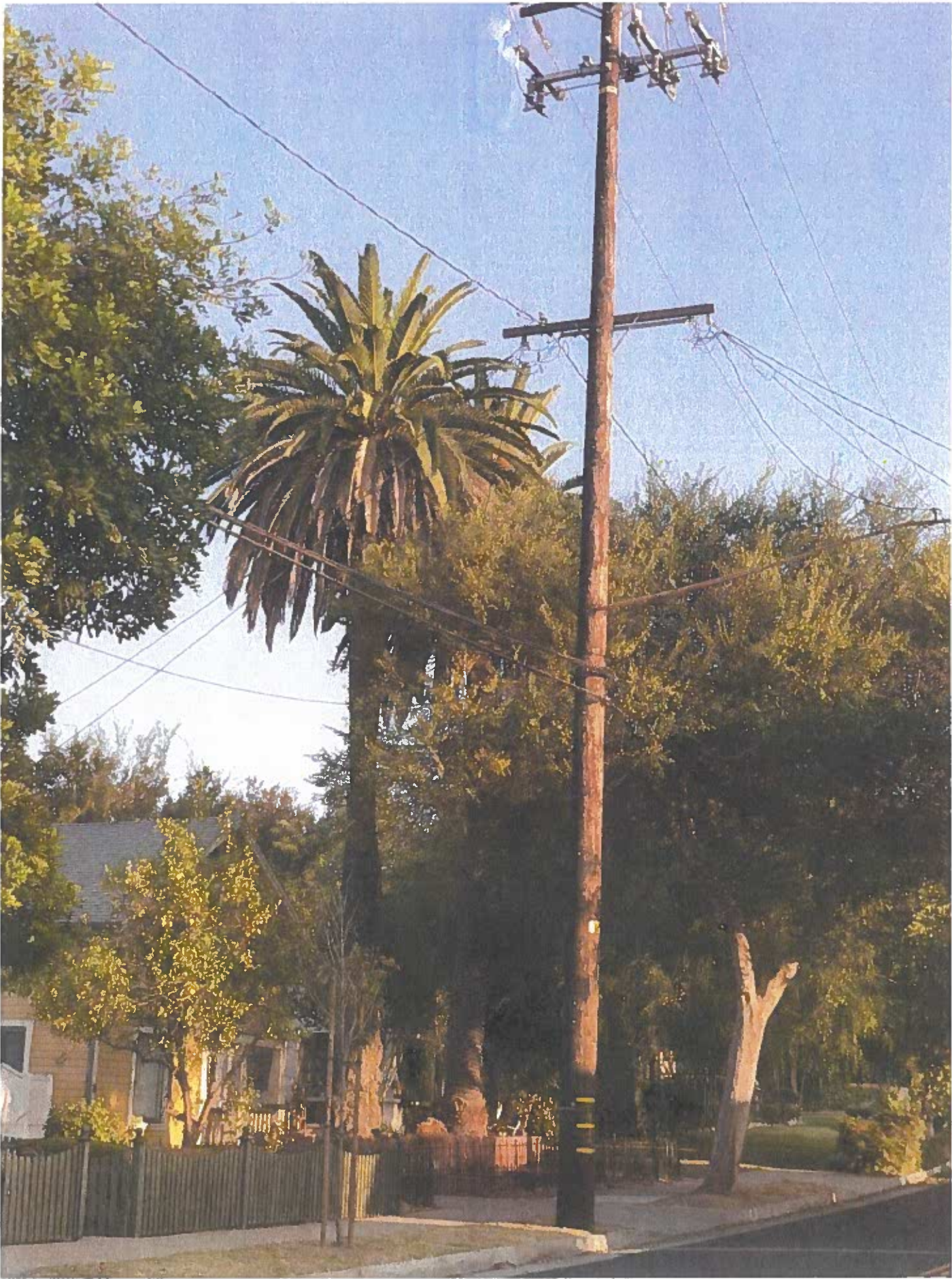
## August 2024

Planter has been filled to 2/3 full further exacerbating the root initiation zone issue. Four years of dead fronds need to be pruned.









## **Replacements**

None of the replacements are shade trees. The Japanese Maple is in a shaded corner with preexisting canopies. South Pasadena does not receive enough chill hours for a Gala Apple tree to produce. Shade trees in general should not be replaced with [semi-]dwarf fruit trees or non-shade bearing trees.

## **Final Remarks**

Palm roots do not damage foundations. These trees are well placed and have proven such over their lifetime. They are now above the house so at no risk of interfering and are providing desirable shade and aesthetic to the homeowners, neighbors and fellow residents walking and driving by. Our city arborist has given zero remarks/reason for approval. Please protect South Pasadena's urban canopy. Please ask the applicants to correct the problems they've introduced, return the root initiation zone to its original state, and recommend they have a certified arborist prune the dead fronds (and only the dead fronds, as per standard palm care) via bucket or rope (not climbing spikes) and educate them on fertilization and watering best practices (palm fertilizer and hand watering deep once a month during dry seasons).

Peaches and plums are fun to grow and tasty treats. They too require fertilization and correct pruning practice (open center). They can be enjoyed without removal of old growth street trees.

Thank you,  
Angelo Gladding  
1856 Hanscom Drive